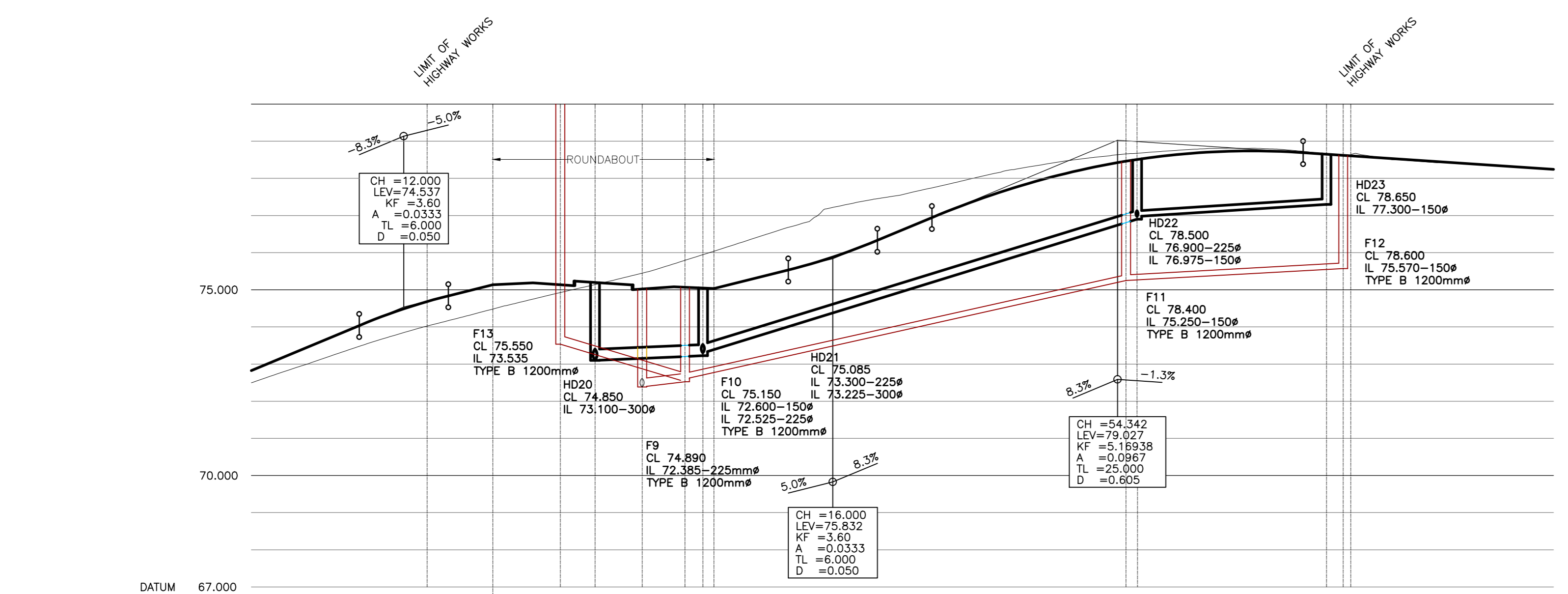
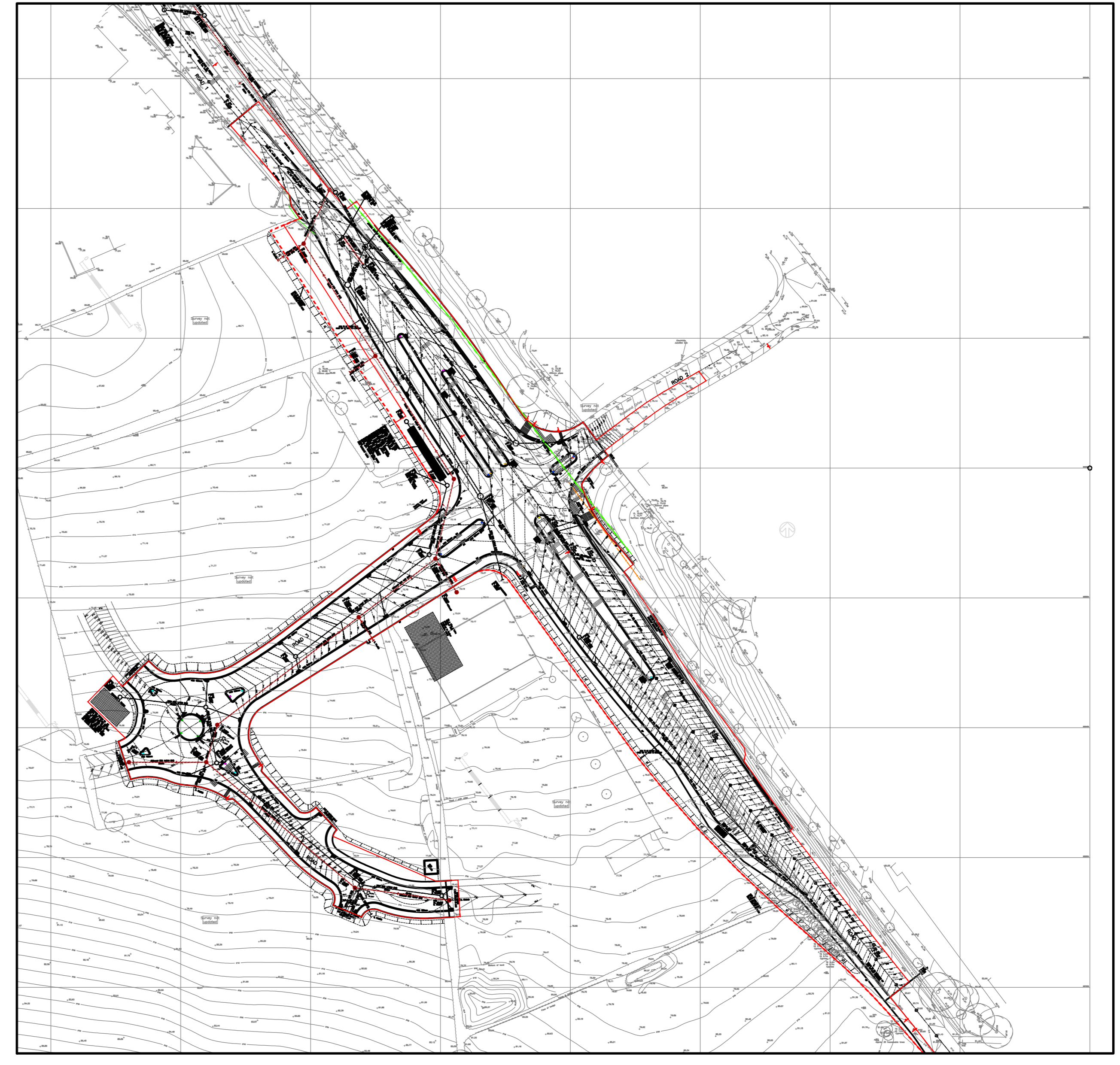


CHAINAGE	0+000	14+855	20+000	30+000	35+000	40+000	45+000	55+000	60+000	70+000	78+261	80+000	100+000	110+000	117+600	123+000	131+000	136+500	142+012	150+128	161+244			
EXISTING GROUND LEVEL	72.012	72.001	72.170	72.128	72.346	72.206	73.000	73.259	73.461	73.525	74.262	74.461	74.711	74.875	74.785	74.991	75.268	75.496	75.371	75.325	75.281	75.153	75.012	75.128
ALIGNMENT LEVEL		71.972	72.034	72.119	72.313	72.850	72.870	73.245	73.421	73.621	74.372	74.748	74.850	74.875	74.785	74.991	75.268	75.496	75.371	75.325	75.281	75.153	75.012	75.128
VERTICAL ALIGNMENT	G ₁ = 1.250% L = 50.0		M ₁ = 8.56223 L = 30.000				G ₂ = 1.759% L = 26.6		ROUNDABOUT		G ₃ = 1.333% L = 30.0													
HORIZONTAL ALIGNMENT	R = 200.000										ROUNDABOUT		R = 50.000		R = 100.000									
LEFT HAND CHANNEL											ROUNDABOUT													
RIGHT HAND CHANNEL											ROUNDABOUT													
SURFACE WATER ALIGNMENT	225mm HD 1 in 44.5 Extra Strength VC to BS EN 295-1 and kitemarked Class S Bedding and Surround																							
FOUL WATER ALIGNMENT	225mm FWS 1 in 27 Extra Strength VC to BS EN 295-1 and kitemarked Class S Bedding and Surround						225mm FWS 1 in 39.5 Extra Strength VC to BS EN 295-1 and kitemarked Class S Bedding and Surround						225mm FWS 1 in 85.7 Extra Strength VC to BS EN 295-1 and kitemarked Class S Bedding and Surround		225mm FWS 1 in 23.6 Extra Strength VC to BS EN 295-1 and kitemarked Class S Bedding and Surround									



CHAINAGE	0+000	2+540	12+540	14+540	17+500	22+540	26+540	32+540	62+329	72+329	77+329	82+329	84+329	89+149	91+671	95+671	97+671	102+329	107+329	112+329	117+329	122+329	127+329	132+329	137+329	141+748	142+329	152+329	162+329	172+329	175+308																	
EXISTING GROUND LEVEL	72.825	72.457	72.671	73.344	73.937	74.615	74.837	75.117	74.482	75.185	74.989	75.214	75.130	75.005	75.080	75.032	75.532	76.882	76.817	77.382	76.171	77.382	76.332	76.944	76.998	77.774	77.384	77.272	78.236	78.012	78.253	78.539	78.445	78.571	78.686	78.733	78.829	78.732	78.694	78.712	78.550	78.548	78.416	78.432	78.276	78.276	78.236	78.236
ALIGNMENT LEVEL		73.037	73.344	73.937	74.295	74.615	74.837	75.117	74.482	75.185	74.989	75.214	75.130	75.005	75.080	75.032	75.532	76.882	76.817	77.382	76.171	77.382	76.332	76.944	76.998	77.774	77.384	77.272	78.236	78.012	78.253	78.539	78.445	78.571	78.686	78.733	78.829	78.732	78.694	78.712	78.550	78.548	78.416	78.432	78.276	78.276	78.236	78.236
VERTICAL ALIGNMENT	G ₁ = -8.333% L = 12.0 KF = -3.60		G ₂ = 5.000% L = 12.0 KF = 3.60		ROUNDABOUT		G ₃ = 5.000% L = 12.0 KF = 3.60		G ₄ = -5.000% L = 12.0 KF = -3.60		ROUNDABOUT		G ₅ = 5.000% L = 12.0 KF = 3.60		G ₆ = -5.16938% L = 12.0 KF = -5.16938		G ₇ = 1.333% L = 30.0 KF = 3.60		G ₈ = -1.333% L = 30.0 KF = -3.60																													
HORIZONTAL ALIGNMENT	R = 75.000		R = 50.000		ROUNDABOUT		R = 50.000		R = 50.000		ROUNDABOUT		R = 50.000		R = 50.000		R = 50.000		R = 50.000		R = 50.000		R = 50.000		R = 50.000		R = 50.000		R = 50.000		R = 50.000		R = 50.000		R = 50.000		R = 50.000		R = 50.000		R = 50.000		R = 50.000		R = 50.000			
LEFT HAND CHANNEL											ROUNDABOUT																																					
RIGHT HAND CHANNEL											ROUNDABOUT																																					
HIGHWAY DRAIN LENGTH											21.1																																					
FOUL DRAIN LENGTH											15.6																																					
SURFACE WATER ALIGNMENT	300mm HD 1 in 140 Extra Strength VC to BS EN 295-1 and kitemarked Class S Bedding and Surround						225mm HD 1 in 16.2 Extra Strength VC to BS EN 295-1 and kitemarked Class S Bedding and Surround						150mm HD 1 in 77.0 Extra Strength VC to BS EN 295-1 and kitemarked Class S Bedding and Surround																																			
FOUL WATER ALIGNMENT	225mm FWS 1 in 85.7 Extra Strength VC to BS EN 295-1 and kitemarked Class S Bedding and Surround						150mm FWS 1 in 22.6 Extra Strength VC to BS EN 295-1 and kitemarked Class S Bedding and Surround						150mm FWS 1 in 91.7 Extra Strength VC to BS EN 295-1 and kitemarked Class S Bedding and Surround																																			
FOUL WATER ALIGNMENT	225mm FWS 1 in 25.3 Extra Strength VC to BS EN 295-1 and kitemarked Class S Bedding and Surround																																															



NOTES

(C) THIS DRAWING IS COPYRIGHT

CONTRACTORS MUST CHECK ALL DIMENSIONS ON SITE. ONLY FIGURED DIMENSIONS ARE TO BE WORKED FROM. DISCREPANCIES MUST BE REPORTED IMMEDIATELY TO JUBB CONSULTING ENGINEERS LIMITED BEFORE PROCEEDING.

THIS DRAWING MUST BE READ IN CONJUNCTION WITH THE CURRENT ENGINEERING SPECIFICATIONS AND RISK ASSESSMENTS.

ALWAYS CHECK FOR LATER REVISIONS OF THIS DRAWING.

REV	DATE	DESCRIPTION	DRN	CHK	ENG
K	16/07/12	CONSTRUCTION ISSUE			
J	29/03/12	Foul sewer amended.	S.H	TA	TA
I	28/02/12	Add & Omit.	S.H	AT	TA
H	20/01/12	Drainage amended to suit Planning request for tree to roundabout.	S.H		
G	16/01/12	Road 4 longitudinal section amended to suit SW comments 10/01/12.	S.H		
F	25/12/11	Foul manhole F12 added. Road 4 foul and surface drainage amended to suit.	S.H		
E	24/11/11	TENDER ISSUE	S.H		
D	22/11/11	Road 3 drainage amended to suit.	S.H		
C	17/11/11	Minor amendments as required.	S.H		
B	14/09/11	ORIGINAL ISSUE	S.H		
A					

Issue Status

CONCEPT CONSTRUCTION

PRELIMINARY H&S FILE ISSUE

TENDER REPORT

Project

BRIXHAM ROAD PAIGNTON

Detail

**LONGITUDINAL SECTIONS
ROADS 3 & 4**

Client/Architect

**CAVANA HOMES (SW LTD)
PARKBAY DEVELOPMENTS LTD**

Scale @ A0

1:500H 1:100V

Project Ref

F9464

Drawing No

H105

Rev

K

JUBB

CONSULTING ENGINEERS LIMITED

CIVIL STRUCTURAL ENVIRONMENTAL

MECHANICAL ELECTRICAL HYDRAULIC SECTECHANICAL

BRISTOL

FARNBOROUGH

CARDIFF

PLYMOUTH

TEL: 0117 922 4000 FAX: 0117 922 6813 EMAIL: BRISTOL@JUBB.CO.UK

TEL: 01252 551000 FAX: 01252 551005 EMAIL: FARNBOROUGH@JUBB.CO.UK

TEL: 01292 524444 FAX: 01292 524445 EMAIL: CARDIFF@JUBB.CO.UK

TEL: 01752 933000 FAX: 01752 933001 EMAIL: PLYMOUTH@JUBB.CO.UK