



**STEPHENSON
HALLIDAY**

Planning, Landscape & Environment
an **RSK** company

TORBAY OPEN SPACE STUDY PART 2: LOCAL GREEN SPACES



Final report
Prepared by Stephenson Halliday

June 2025

Contents

1	Introduction	1
1.1	General	1
2	Policy Context	3
2.1	National Planning Policy Framework and Planning Practice Guidance	3
2.2	Torbay Local Plan	4
2.3	Neighbourhood Plans	4
3	Methodology	9
3.1	Overview	9
3.2	Assessment	9
4	Torquay LGS	13
	TLGSB1 - Barton Downs	14
	TLGSB2 - Brunel Woods	15
	TLGSB3 - Firlands Green	16
	TLGSB4 - Great Hill	17
	TLGSB5 - Steps Cross Playing Field	18
	TLGSB6 - Woodend Project	19
	TLGSC1 - Armada Park	20
	TLGSC2 - Ashfield Gardens	21
	TLGSC3 - Cockington Country Park	22
	TLGSC4 - Corbyn's Head	23
	TLGSC5 - Crownhill Park	24
	TLGSC6 - Goshen Triangle	25
	TLGSC7 - Highlands/Sherwell Valley Allotments	26
	TLGSC8 - Hollicombe Park	27
	TLGSC9 - Innerbrook/Sandford Green Space	28
	TLGSC10 - Kings Gardens	29
	TLGSC11 - Occombe Farm	30
	TLGSC12 - Piggeries Green Space	31
	TLGSC13 - Preston Primary School Play Park	32
	TLGSC14 - Rocket Park	33
	TLGSC15 - Sherwell Park	34
	TLGSC16 - Sherwell Valley/Grenville Green Space (Markham Plantation)	35

TLGSC17 - St Matthew's Field	36
TLGSC18 - Torre Valley North & South Sports Fields	37
TLGSC19 - Rugby/Cricket Club & Bowling Club	38
TLGSC20 - Two Parks	39
TLGSC21 - Victoria Park	40
TLGSC22 - Hollicombe Brake	41
TLGSC23 - Scadson Valley Green Space	42
TLGSE1 - Belmont Park	43
TLGSE2 - Brewery Park	44
TLGSE3 - Castle Road Park	45
TLGSE4 - Ellacombe Park	46
TLGSE5 - Quinta/Windsor Road Allotments	47
TLGSE6 - Stentiford Hill Park	48
TLGSE7 - Warberry Copse	49
TLGSH1 - Cricketer's Field	50
TLGSH2 - Daison Wood	51
TLGSH3 - Truro Bank	52
TLGSH4 - Windmill Hill Playing Field	53
TLGSM1 - Babbacombe Downs	54
TLGSM2 - Brunel Manor Gardens & Grounds	55
TLGSM3 - Cary Park	56
TLGSM4 - Easterfield Playing Fields	57
TLGSM5 - Glen Sannox Memorial Gardens	58
TLGSM6 - Hartop Road Allotments	59
TLGSM7 - Haytor Park	60
TLGSM8 - The Fields	61
TLGSM9 - Maidencombe Community Orchard	62
TLGSM10 - Maidencombe Village Green	63
TLGSM11 - Millenium Copse	64
TLGSM12 - Petitor Downs	65
TLGSM13 - Quinta Road Allotments	66
TLGSM14 - Quinta Road School Playing Fields	67
TLGSM15 - Plainmoor Recreation Ground	68
TLGSM16 - Tessier Gardens	69
TLGSM17 - The Grove	70
TLGSM18 - King George V Playing Fields	71
TLGSM19 - The Rose Garden	72
TLGSM20 - Valley of the Rocks	73
TLGSM21 - Walls Hill	74

TLGSM22 - Walls Hill Slopes	75
TLGSM23 - William's Field	76
TLGSS1 - Cadewell Park Green	77
TLGSS2 - Darwin Park	78
TLGSS3 - Ellacombe Plantation	79
TLGSS4 - Exe Hill Green Space & Playground	80
TLGSS5 - Furzebrake Plantation	81
TLGSS6 - Green Space at Newton Road	82
TLGSS7 - Huntacott Way Green Space & Playground	83
TLGSS8 - Kitson Park	84
TLGSS9 - Lindisfarne Park	85
TLGSS10 - Lloyd Avenue Village Green	86
TLGSS11 - Montserrat Rise	87
TLGSS12 - Riviera Way Woodland	88
TLGSS13 - Shiphay Park	89
TLGSS14 - South Parks Allotments	90
TLGSS15 - Beechfield Allotments	91
TLGST1 - Cary Green	92
TLGST2 - Promenade: Princess Gardens and the 'Sunken Gardens'	93
TLGST3 - Royal Terrace Gardens (Rock Walk)	94
TLGST4 - Abbey Park and Meadows	95
TLGST5 - Old Maids Perch	96
TLGSTU1 - Brunswick Square	97
TLGSTU2 - Chapel Woods	98
TLGSTU3 - Memorial Gardens	99
TLGSTU4 - Parkfield Road Gardens	100
TLGSTU5 - Stantaway Hill & Allotments	101
TLGSTU6 - Torre Churchyard	102
TLGSTU6 - Upton Park	103
TLGSW1 - Daddyhole Plain	104
TLGSW2 - Ilsham Valley (Meadfoot Green)	105
TLGSW3 -Lincombe Woods	106
TLGSW4 - Manor Gardens	107
TLGSW5 - St John's Wood	108
TLGSW6 - Stoodley Knowle Meadow	109
TLGSW7 - Thatcher Pines & Thatcher Point	110
TLGSW8 - Torwood Gardens	111
TLGSW9 - Wellswood Green	112

5	Paignton LGS	113
PLGS.01 - Paignton Green North, Central and South		114
PLGS.02 - Victoria Park, Torquay Road		115
PLGS.03 - Torbay Park and Gardens, Esplanade Road		116
PLGS.04 - Berry Square, off Kernou Road		117
PLGS.05 - Queens Park (Rugby and Cricket Ground)		118
PLGS.06 - Palace Avenue Gardens		119
PLGS.07 - Burma Star Garden, Cliff Road		120
PLGS.08 - Whitstone Corner		121
PLGS.09 - Roundham Head Park		122
PLGS.10 - St Michaels Field, Derrell Road		123
PLGS.11 - Oakleigh St Michaels Allotments		124
PLGS.12 - Derrell Road Allotments		125
PLGS.13 - Preston Green, Marine Drive		126
PLGS.14 - Parkfield		127
PLGS.15 - Coombe Valley Park, South West of Coombe Road		128
PLGS.16 - Hollicombe Cliff Park, east of Torquay Road		129
PLGS.17 - Hollicombe Park (part of)		130
PLGS.18 - Wills Avenue Playground		131
PLGS.19 - Preston Gardens, Torquay Road		132
PLGS.20 - Oldway Mansion and Gardens		133
PLGS.21 - Shorton Valley Woods		134
PLGS.22 - Hollicombe Allotments		135
PLGS.23 - Sandringham Gardens, Preston		136
PLGS.24 - Lower Penns Road Allotments		137
PLGS.25 - Scadson Woods, Duchy Drive		138
PLGS.26 - Stanley Gardens		139
PLGS.27 - Ailescombe Road Allotments		140
PLGS.28 - Monastery, Winner Hill		141
PLGS.29 - Paignton Cemetery		142
PLGS.30 - Clennon Valley Allotments		143
PLGS.31 - Quay West Corner, Brixham Road		144
PLGS.32 - Young's Park		145
PLGS.33 - Oyster Bend Field		146
PLGS.34 - Goodrington Community Orchard		147
PLGS.35 - Goodrington Village Green		148
PLGS.36 - Claylands Cross Park		149
PLGS.37 - Gibson Road Playground		150
PLGS.38 - White Rock Recreation Ground		151

PLGS.39 - York Road Allotments	152
PLGS.40 - Hookhills Playground and Park	153
PLGS.41 - Lancaster Drive Play Park	154
PLGS.42 - Cherry Brook Square	155
PLGS.43 - Goodrington Road	156
PLGS.44 - Primley Park	157
PLGS.45 - Redwell Road	159
PLGS.46 - Smallcombe Scout Field	160
PLGS.47 - Smallcombe Road Playground and Park	161
PLGS.48 - Wild Fox Adventure Playground	162
PLGS.49 - Foxhole Community Field	163
PLGS.50 - Great Parks Play Area	164
PLGS.51 - Snowdonia Close	165
PLGS.52 - Pennine Drive Amenity Area	166
PLGS.53 - Collaton St. Mary Meadow	167
6 Brixham LGS	168
E4 - 01 - Ash Hole Woods	169
E4 - 02 - Astley Park	170
E4 - 03 - Battery Gardens	171
E4 - 04 - Berry Head	172
E4 - 05 - Bonsey Rose Gardens	173
E4 - 06 - Brixham Cricket Club	174
E4 - 07 - Furzeham Greens	175
E4 - 08 - Jubilee Gardens	176
E4 - 09 - Shoalstone	177
E4 - 10 - St Mary's Churchyard	178
E4 - 11 - St Mary's Park	179
E4 - 12 - Stoney Park Allotments	180
7 Churston, Galmpton and Broadsands LGS	181
E4 - 13 - Churston Golf Course	182
E4 - 14 - Elberry Headland	183
E4 - 15 - Warborough Common	184
E4 - 16 - Sugar Loaf Hill	185

Appendices

Appendix 1 Copy of field survey sheet

Figures

- Figure 2.1 Local Green Spaces - Torquay
- Figure 2.2 Local Green Spaces - Paignton
- Figure 2.3 Local Green Spaces - Brixham

Tables

Table 3.1 Local Green Space Assessment Criteria

ACKNOWLEDGEMENTS

This open space study has been made possible through the valuable contributions and collaboration of a range of individuals and organisations. We would like to extend our sincere thanks to Torbay Council for commissioning and supporting this study. Particular thanks are due to Tracy Brooks, Senior Strategic Planning Officer, for her dedicated coordination and detailed, local guidance throughout the project, and to David Pickhaver, Principal Policy and Project Planner, for his strategic oversight and commitment to integrating robust landscape evidence into the Local Plan update.

We would also like to thank the individuals who took time to respond to the Public Consultation, providing valuable local experiences and knowledge of the open spaces across Torbay, to inform the open space studies.

Document history

	Name	Date
Author	Jenny Gay, Rosemary Walker, Emily Curnow	29/04/2025
Technical Reviewer	Andrew Tempany	12/05/2025
Approved	Andrew Tempany	12/05/2025
Revision	Jenny Gay, Emily Curnow	20/06/2025
Revision	Rosemary Walker	30/06/2025

1 INTRODUCTION

1.1 General

- 1.1.1 Torbay Council are in the process of reviewing and updating the Local Plan, working towards the new local plan *Torbay Local Plan Update: A Landscape to Thrive*. Torbay Council has commissioned Stephenson Halliday (an RSK Group Company), to produce a Strategic Landscape Study to form part of the evidence base to support the Local Plan update and inform strategic planning decisions and policies related to land use, development and conservation.
- 1.1.2 The Strategic Landscape Study is an independent consultant's report, with the aim of providing expert knowledge and analysis to assist policy making. Torbay Council is not obligated to follow any specific recommendations.
- 1.1.3 The Strategic Landscape Study comprises four related studies that will provide a tool to understand the Torbay landscape and assist in monitoring and guide future landscape change. The studies are:
- Landscape Character Assessment for Torbay.
 - Landscape Sensitivity Assessment (in two parts, for Residential and Commercial development and Wind and Solar development).
 - Open Space Study (this report, in three parts).
 - Review of Valued Landscapes.
- 1.1.4 The Open Space Study will provide an overview of the existing open spaces within Torbay, including:
- Part 1: Urban landscape Protection Areas (ULPA).
 - **Part 2: Local Green Spaces (LGS) - this document.**
 - Part 3: Public Open Spaces (POS).
- 1.1.5 This study provides an analysis of the Local Green Spaces (LGS) that are designated in the Torquay¹, Paignton² and Brixham Peninsula³ Neighbourhood Plans. The aim is to understand what contribution these spaces make to the landscape of Torbay. It does not address the criteria that are not related to landscape.

¹ Torquay Neighbourhood Plan (Adopted June 2019)

² Paignton Neighbourhood Plan (Adopted June 2019)

³ Brixham Peninsula Neighbourhood Plan (Adopted June 2019)

- 1.1.6 This is a separate study from the Urban landscape Protection Area (ULPA) and Public Open Space (POS) studies, but there will be some need to cross-reference with the other documents to understand the relationship between the LGS (Neighbourhood Plan designation) and ULPA (Local Plan designation) and POS (Neighbourhood Plan designation) where they overlap..
- 1.1.7 The purpose of the LGS review is to:
- Identify how the space contributes to the landscape qualities, with regard to the NPPF criteria⁴.
- 1.1.8 The study is aimed at the following user groups:
- Planning Officers (plan making and development management).
 - Developers and their consultants.
 - Neighbourhood Forums.
 - Elected Members.

⁴ NPPF - Paragraph 107, Ministry of Housing, Communities and Local Government, last updated 2024

2 POLICY CONTEXT

2.1 National Planning Policy Framework and Planning Practice Guidance

- 2.1.1 The National Planning Policy Framework (NPPF, 2024) identifies that “*Planning policies and decisions should ensure that developments...are sympathetic to local character and history, including the surrounding built environment and landscape setting...*”⁵.
- 2.1.2 Chapter 15 of the NPPF focusses on conserving and enhancing the natural environment. It states that “*Planning policies and decisions should contribute to and enhance the natural and local environment by: a) protecting and enhancing valued landscapes, sites of biodiversity or geological value and soils (in a manner commensurate with their statutory status or identified quality in the development plan)...*”⁶
- 2.1.3 The NPPF also states that “*Plans should: distinguish between the hierarchy of international, national and locally designated sites; allocate land with the least environmental or amenity value, where consistent with other policies in this Framework; take a strategic approach to maintaining and enhancing networks of habitats and green infrastructure; and plan for the enhancement of natural capital at a catchment or landscape scale across local authority boundaries*”⁷.
- 2.1.4 The Planning Practice Guidance (PPG, 2019) expands on the NPPF, stating that “*Where landscapes have a particular local value, it is important for policies to identify their special characteristics and be supported by proportionate evidence*”⁸.
- 2.1.5 As established within the NPPF, designation of Local Green Spaces is done through local and neighbourhood plans; enabling “*communities to identify and protect green areas of particular importance to them*”⁹.
- 2.1.6 Paragraph 107 of the NPPF states that the Local Green Space designation should be used where the green space is:
- a) “*In reasonably close proximity to the community it serves;*
 - b) “*Demonstrably special to a local community and holds a particular local significance, for example because of its beauty, historic significance, recreational value (including as a playing field), tranquillity or richness of its wildlife; and*
 - c) “*Local in character and is not an extensive tract of land*”.

⁵ NPPF - Paragraph 135, Ministry of Housing, Communities and Local Government, last updated 2024

⁶ NPPF - Paragraph 187, Ministry of Housing, Communities and Local Government, last updated 2024

⁷ NPPF - Paragraph 188, Ministry of Housing, Communities and Local Government, last updated 2024

⁸ Planning Policy Guidance for the Natural Environment, Paragraph 036 (Ref ID: 8-036-20190721), Ministry of Housing, Communities and Local Government, 2019

⁹ NPPF - Paragraph 106, Ministry of Housing, Communities and Local Government, last updated 2024

2.2 Torbay Local Plan

- 2.2.1 There are various references to ‘open space’ within the Torbay Local Plan¹⁰, including protection of existing and creation of new open spaces. Section 4.4 of the Torbay Local Plan refers to the green infrastructure network. It identifies that this comprises interconnected open spaces with a variety of benefits, which link through urban spaces to the wider countryside.
- 2.2.2 Policy SS8 Natural Environment requires development to “*have regard to its environmental setting and...positively contribute to the conservation and enhancement of the natural assets and setting of the Bay*”. This includes maintaining or restoring open spaces.
- 2.2.3 Policy SS9 Green Infrastructure seeks to “*protect and provide high quality green space at a local level*”. This includes delivering and enhancing existing open space as part of the wider green infrastructure network.
- 2.2.4 The justification for Policy SS11 Sustainable Communities identifies that open spaces contribute to the character of the area and should be considered in future development.
- 2.2.5 Policy C5 Urban Landscape Protection Areas (ULPAs) identifies 57 areas of special landscape within the urban areas of Torbay and seeks to protect them as “*essential landscape features*”. The explanation for Policy C5 notes that some of the ULPAs may qualify for designation of Local Green Space through the neighbourhood planning process.

2.3 Neighbourhood Plans

- 2.3.1 There are 99no. Local Green Spaces designated under Policy TE2 of the Torquay Neighbourhood Plan, “*where development is ruled out, other than in very special circumstances*”¹¹. The justification text notes that many other sites were rejected as they did not meet the designation criteria, and that those designated are due to special significance to the local community as a historic, recreational, sport, wildlife or food production asset.
- 2.3.2 There are 53no. Local Green Spaces designated under Policy PNP1 (b) of the Paignton Neighbourhood Plan, where “*proposals for new developments will only be supported in very special circumstances. ‘Very special circumstances’ will not exist unless the potential harm to these Local green spaces by reason of inappropriateness, and any other harm, is clearly outweighed by other considerations*”¹². Some of the Local Green Spaces are also included in separate, location specific policies to guide future development/management of the spaces, for example Policy PNP9 Victoria Park.
- 2.3.3 There are 16no. Local Green Spaces designated under Policy EN4 of the Brixham Peninsula Neighbourhood Plan, “*development within a LGS will only be permitted in “very special circumstances” and would require robust justification on grounds of specific benefit to the community. For example, where the proposal would enhance recreational, sport or leisure*

¹⁰ *Torbay Local Plan A Landscape for Success – The Plan for Torbay: 2012 to 2030*, Torbay Council, December 2015 - <https://www.torbay.gov.uk/council/policies/planning-policies/local-plan/local-plan/> - accessed January 2025

¹¹ *The Torquay Neighbourhood Plan*, Adopted June 2019

¹² *Paignton Neighbourhood Plan 2012-2030*, Adopted June 2019

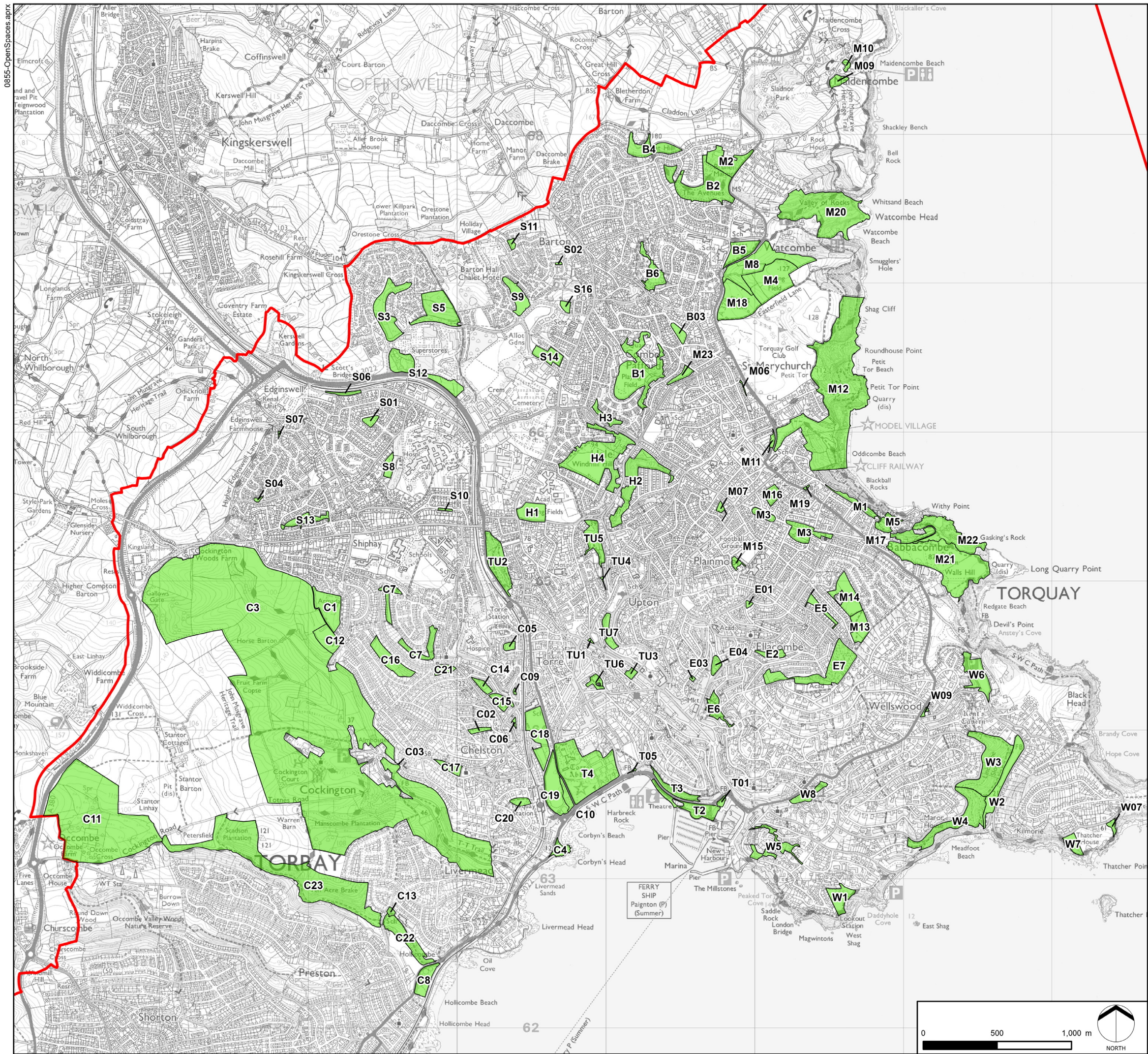
*facilities and provided it met stringent design and environmental requirements it might be viewed favourably”*¹³. The policy also notes that some of the spaces are protected by international and national designations such as the Berry Head Special Area of Conservation.

¹³ *Brixham Peninsula Neighbourhood Plan Policy Document*, Brixham Peninsula Neighbourhood Forum, 2019

0855-OpenSpaces.aprx

TORBAY STRATEGIC LANDSCAPE STUDY OPEN SPACE STUDY PART 2

FIGURE 2.1
Local Green Spaces - Torquay



KEY

Torbay Council Boundary

Local Green Space (Local Plan Policy Prefix TLGS)

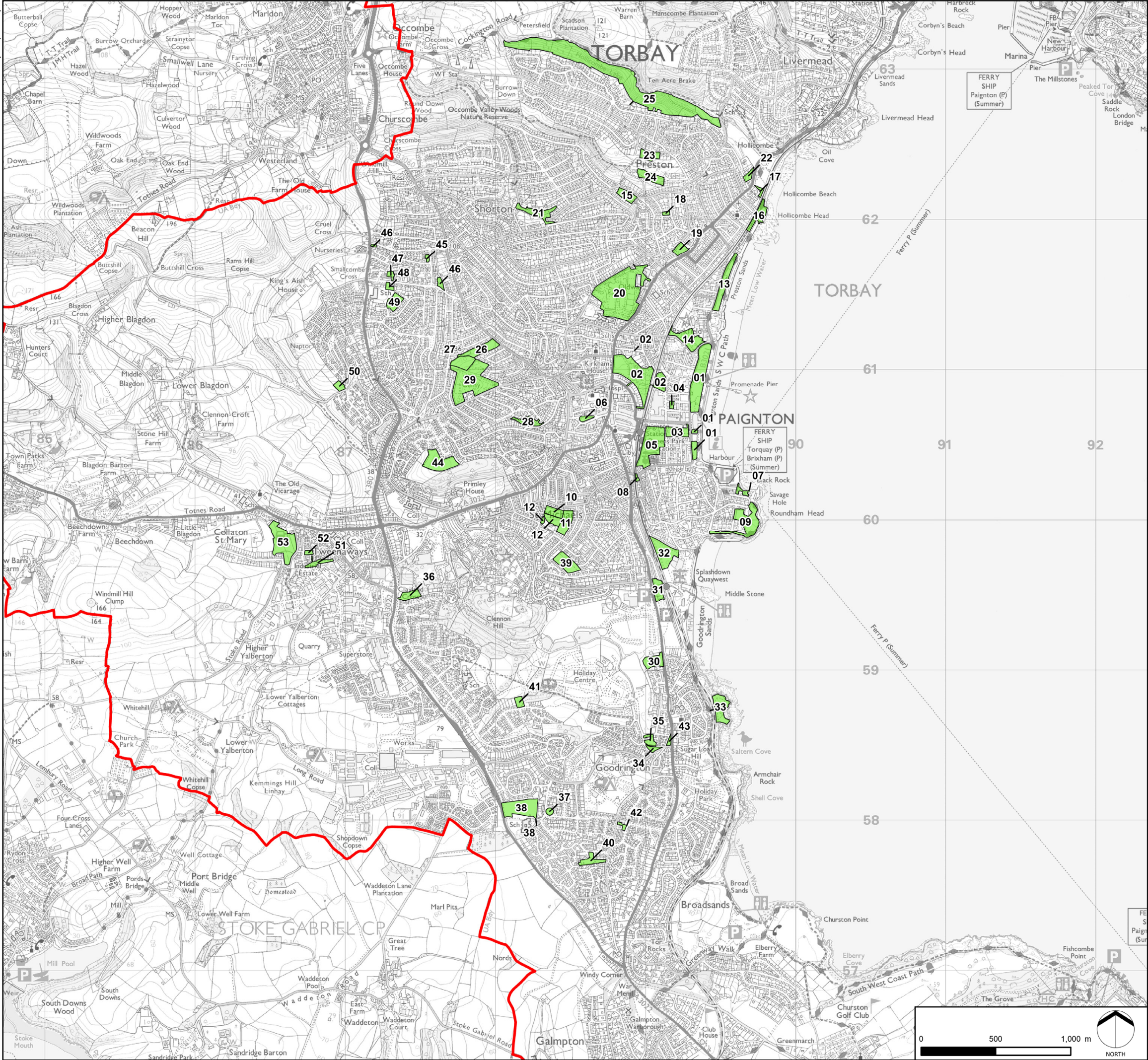
TORBAY STRATEGIC LANDSCAPE STUDY OPEN SPACE STUDY PART 2

FIGURE 2.2
Local Green Spaces - Paignton

KEY

Torbay Council Boundary

Local Green Space (Local Plan Policy Prefix PLGS.)



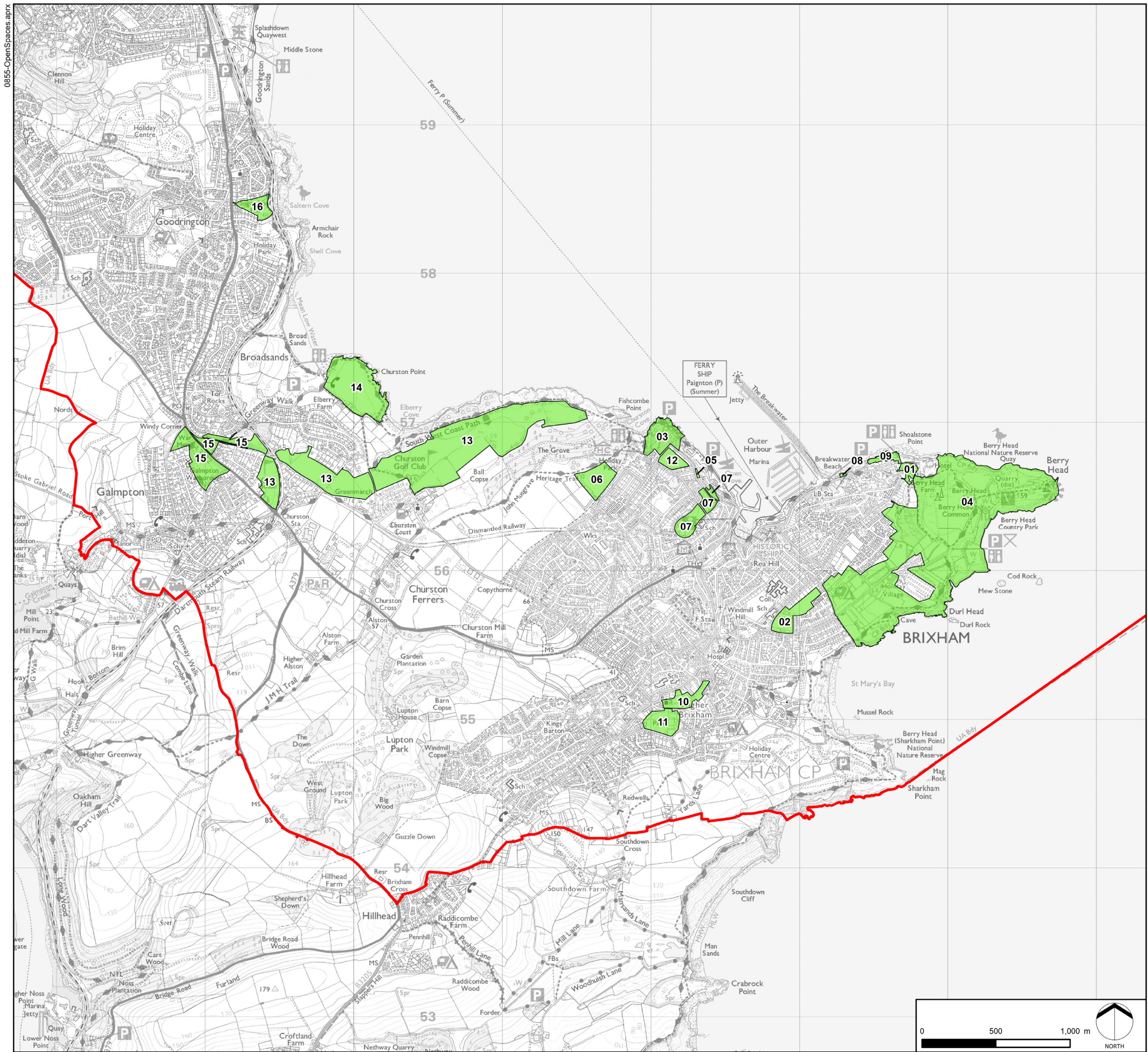
Projected Coordinate System: British National Grid

DATE	BY	PAPER	SCALE	QA	REV
JUN 2025	MP	A3	1:25,000	JGa	-



0855-OpenSpaces.aprx

**TORBAY STRATEGIC LANDSCAPE STUDY
OPEN SPACE STUDY PART 2**

FIGURE 2.3
Local Green Spaces - Brixham



KEY

-  Torbay Council Boundary
-  Local Green Space (Local Plan Policy Prefix E4-)

Projected Coordinate System: British National Grid

DATE	BY	PAPER	SCALE	QA	REV
JUN 2025	MP	A3	1:25,000	JGa	-

3 METHODOLOGY

3.1 Overview

- 3.1.1 The purpose of the Local Green Space Review is to understand what contribution each LGS makes to the local landscape, in relation to the Local Green Space criteria established within the NPPF¹⁴. It does not address the criteria that are not related to landscape.
- 3.1.2 There is no specific guidance for the assessment of Local Green Spaces. The methodology and criteria for this assessment have been developed through consideration of the NPPF policy text, previous professional experience and precedents, and landscape guidance including *Assessing landscape value outside national designations*¹⁵ and *An approach to landscape sensitivity - to inform spatial planning and land management*¹⁶.
- 3.1.3 The Review provides an evidence base to guide future decision making related to development and management of the urban landscapes and green spaces within Torbay. It can be used to inform ongoing monitoring and management of the spaces. It also provides a basis for future assessment of potential Local Green Spaces.

3.2 Assessment

- 3.2.1 The Review has been carried out through a combination of desk and field survey work. Field survey work was carried out to corroborate the desk findings in September and November 2024.
- 3.2.2 A record sheet was developed and agreed with Torbay Council (see Appendix 1). This was adapted for use in ArcGIS Survey 123, for use on a desktop computer and an electronic device for in-field data capture when on site.
- 3.2.3 During the field work the majority of the spaces were visited, photographs were taken, and the record sheet was completed. It should be noted that not all the spaces were able to be visited during the field survey and in these instances the assessment has been desk-based, using OS mapping, aerial imagery and photographic records. This work has been reviewed by Planning Officers at Torbay Council, with local knowledge and input as appropriate.
- 3.2.4 The survey results have been pulled through into this final report.
- 3.2.5 The key criteria for the assessment of the landscape contribution of each LGS are:
- Identify the proximity of the LGS to the local community.
 - Identify any existing landscape designation.

¹⁴ *Torbay Local Plan A Landscape for Success – The Plan for Torbay: 2012 to 2030*, Torbay Council, December 2015 - <https://www.torbay.gov.uk/council/policies/planning-policies/local-plan/local-plan/> - accessed January 2025

¹⁵ *Landscape Institute Technical Guidance Note 02/21*, Landscape Institute May 2021

¹⁶ *An approach to landscape sensitivity – to inform spatial planning and land management*, Natural England, 2019, NE724

- Evaluate the landscape condition, scenic value and tranquillity of the LGS.
- Identify whether the LGS is local in character or forms part of an extensive tract of land.
- Identify any substantial change to the land use and land cover of the LGS since its designation in 2019.

3.2.6 Each LGS has been evaluated against the set evaluation criteria in table 3.1 below, which were developed and agreed with Torbay Council and are set out in Table 3.1 below. Specific landscape elements/features are not identified as part of this analysis.

Table 3.1 Local Green Space Assessment Criteria

Criteria	More suitable ←		→ Less suitable
Proximity to the community	The space is in immediate proximity to the community / settlement. The community has direct physical and / or visual connection with the space, which might form an essential node / focal point for the community.	The space has a degree of proximity to the community / settlement. The community has some physical or visual relationship with the space, which might form a secondary node / link for the community.	The space is detached / removed from the community / settlement. There is poor connectivity between the community and space, with limited / no visual or physical link.
Scenic quality designation	The space is wholly within a nationally designated landscape, i.e. National Landscape, where the CRoW Act (2000) duty to have regard to the purpose of conserving and enhancing natural beauty applies.	The space is partly within a nationally designated landscape or within a locally designated landscape i.e. Undeveloped Coast or Urban Landscape Protection Area.	The space is not within a designated landscape.
Landscape condition	The landscape elements and overall landscape structure within the space are in a good physical state, where key landscape features are present and well maintained.	The landscape elements and overall landscape structure within the space are in a moderate physical state, where some key landscape features are present but there is a degree of degradation or limited maintenance.	The landscape elements and overall landscape structure within the space are in a poor physical state, where key landscape features are degraded and poorly maintained.
Scenic value	The space contains distinctive and diverse features. There are memorable / key views and landmarks associated with the space.	The space contains a few distinctive and diverse features. There are limited memorable / key views and landmarks associated with the space.	The space does not contain distinctive and diverse features. There are no memorable / key views and landmarks associated with the space.
Tranquillity	The space provides ample opportunity for quiet reflection.	The space provides some opportunity for quiet reflection.	The space provides limited / no opportunity for quiet reflection.
Local in character and not an extensive tract of land	The space is self-contained.	The space is predominantly self-contained.	The space is part of the open countryside.

Identify changes to the LGS

- 3.2.7 This was predominantly a desk-based review of each LGS, using OS mapping and aerial imagery to identify any changes to land use and land cover, since their designation in 2019.
- 3.2.8 It is acknowledged that there is likely to have been an element of change within every LGS over this time period, particularly considering vegetation growth and/or removal. However, where this has not ultimately altered the size and function of the LGS 'No substantial change' has been recorded.
- 3.2.9 The Local Green Space (LGS) review recorded 10 instances of change since the 2019 designation. The majority of sites across Torquay, Paignton, and Brixham Peninsula, were found to have experienced "no substantial change" to land use or land cover. In cases where changes were noted, the majority were limited changes, such as minor vegetation clearance, installation of benches or play equipment, or shifts in maintenance responsibility, which have not altered the landscape function of the space.

4 TORQUAY LGS

TLGSB1 - Barton Downs

Devon Landscape Character Area	None
Torbay Landscape Character Area	7 - Main cities and towns
Location	Lummaton Cross, Torbay, Torquay, Devon, England, TQ2 8
Other designations	ULPA (C5.07 Lummaton Hill, Combe Pafford)



Local Green Space Analysis

Proximity to the community	The space is in immediate proximity to the community / settlement. The community has direct physical and / or visual connection with the space, which forms an essential node / focal point for the community.
Scenic quality designation	The space is within a locally designated ULPA.
Landscape condition	The landscape elements and overall structure within the space are in a good physical state.
Scenic value	The space contains a few distinctive and diverse features. There are limited memorable/key views and landmarks associated with the space.
Tranquillity	The space provides limited opportunity for quiet reflection.
Local in character	The space is self-contained.

Changes since designation

No substantial change.

TLGSB2 - Brunel Woods

Devon Landscape Character Area	None
Torbay Landscape Character Area	7 - Main cities and towns
Location	4 Froude Ave, Torquay TQ2 8NR
Other designations	ULPA (C5.01 Watcombe Park & Watcombe Heights)



Local Green Space Analysis

Proximity to the community	The space has a degree of proximity to the community / settlement. The community has some physical or visual relationship with the space, which forms a secondary node / link for the community.
Scenic quality designation	The space is within a locally designated ULPA.
Landscape condition	The landscape elements and overall structure within the space are in a moderate physical state.
Scenic value	The space contains distinctive and diverse features. There are memorable/key views and landmarks associated with the space.
Tranquillity	The space provides ample opportunity for quiet reflection.
Local in character	The space is predominantly self-contained.

Changes since designation

No substantial change.

TLGSB3 - Firlands Green

Devon Landscape Character Area	None
Torbay Landscape Character Area	7 - Main cities and towns
Location	Firlands Road, Torbay, Torquay, Devon, England, TQ2 8
Other designations	None



Local Green Space Analysis

Proximity to the community	The space is in immediate proximity to the community / settlement. The community has direct physical and / or visual connection with the space, which forms an essential node / focal point for the community.
Scenic quality designation	The space is not within a designated landscape.
Landscape condition	The landscape elements and overall structure within the space are in a good physical state.
Scenic value	The space contains a few distinctive and diverse features. There are limited memorable/key views and landmarks associated with the space.
Tranquillity	The space provides ample opportunity for quiet reflection.
Local in character	The space is self-contained.

Changes since designation

No substantial change.

TLGSB4 - Great Hill

Devon Landscape Character Area	Breccia Hills and Coast
Torbay Landscape Character Area	4C - Coastal slopes and Combes with settlement
Location	2-22 Seymour Drive, Torbay, Torquay, Devon, England, TQ2 8PY
Other designations	None



Local Green Space Analysis

Proximity to the community	The space has a degree of proximity to the community / settlement. The community has some physical or visual relationship with the space, which forms a secondary node / link for the community.
Scenic quality designation	The space is not within a designated landscape.
Landscape condition	The landscape elements and overall structure within the space are in a moderate physical state.
Scenic value	The space contains a few distinctive and diverse features. There are limited memorable/key views and landmarks associated with the space.
Tranquillity	The space provides some opportunity for quiet reflection.
Local in character	The space is part of the open countryside.

Changes since designation

No substantial change.

TLGSB5 - Steps Cross Playing Field

Devon Landscape Character Area	None
Torbay Landscape Character Area	7 - Main cities and towns
Location	Steps Cross Park, Teignmouth Road, Torquay, TQ2 8NU
Other designations	ULPA (C5.02 Steps Cross, Watcombe)



Local Green Space Analysis

Proximity to the community	The space has a degree of proximity to the community / settlement. The community has some physical or visual relationship with the space, which forms a secondary node for the community.
Scenic quality designation	The space is within a locally designated ULPA.
Landscape condition	The landscape elements and overall structure within the space are in a moderate physical state.
Scenic value	The space does not contain distinctive and diverse features. There are no memorable/key views and landmarks associated with the space.
Tranquillity	The space provides some opportunity for quiet reflection.
Local in character	The space is self-contained.

Changes since designation

Addition of a football pitch and goalposts

TLGSB6 - Woodend Project

Devon Landscape Character Area	None
Torbay Landscape Character Area	7 - Main cities and towns
Location	Mincent Hill, Watcombe, TQ2 8DE
Other designations	ULPA (C5.03 Mincent Hill)



© 2023 Microsoft Corporation © 2023 Maxar © CNES (2023) Distribution Airbus DS.

Local Green Space Analysis

Proximity to the community	The space is in immediate proximity to the community / settlement. The community has direct physical and / or visual connection with the space, which forms an essential node / focal point for the community.
Scenic quality designation	The space is within a locally designated ULPA.
Landscape condition	The landscape elements and overall structure within the space are in a moderate physical state.
Scenic value	The space does not contain distinctive and diverse features. There are no memorable/key views and landmarks associated with the space.
Tranquillity	The space provides some opportunity for quiet reflection.
Local in character	The space is self-contained.

Changes since designation

No substantial change.

TLGSC1 - Armada Park

Devon Landscape Character Area	Torbay Hinterland
Torbay Landscape Character Area	3A - Upper farmed and wooded valley slopes
Location	91-91 Nut Bush Lane, Torquay, Devon, England, TQ2 6
Other designations	None



Local Green Space Analysis

Proximity to the community	The space is in immediate proximity to the community / settlement. The community has direct physical connection with the space, which forms an essential node.
Scenic quality designation	The space is not within a designated landscape.
Landscape condition	The landscape elements and overall structure within the space are in a good physical state.
Scenic value	The space contains distinctive and diverse features. There are memorable/key views associated with the space.
Tranquillity	The space provides ample opportunity for quiet reflection.
Local in character	The space is predominantly self-contained.

Changes since designation

No substantial change.

TLGSC2 - Ashfield Gardens

Devon Landscape Character Area	None
Torbay Landscape Character Area	7 - Main cities and towns
Location	Burridge Road, Torbay, Torquay, Devon, England, TQ2 6
Other designations	ULPA (C5.31 Ashfield Gardens)



Local Green Space Analysis

Proximity to the community	The space is in immediate proximity to the community / settlement. The community has direct physical and / or visual connection with the space, which forms an essential node / focal point for the community.
Scenic quality designation	The space is within a locally designated ULPA.
Landscape condition	The landscape elements and overall structure within the space are in a good physical state.
Scenic value	The space does not contain distinctive and diverse features. There are no memorable/key views and landmarks associated with the space.
Tranquillity	The space provides opportunity for quiet reflection.
Local in character	The space is self-contained.

Changes since designation

No substantial change.

TLGSC3 - Cockington Country Park

Devon Landscape Character Area	Torbay Hinterland
Torbay Landscape Character Area	3A - Upper farmed and wooded valley slopes
Location	Cockington Lane, Torquay TQ2 6XA
Other designations	None



Local Green Space Analysis

Proximity to the community	The space has a degree of proximity to the community / settlement. The community has some physical or visual relationship with the space, which forms a secondary node / link for the community.
Scenic quality designation	The space is not within a designated landscape.
Landscape condition	The landscape elements and overall structure within the space are in a good physical state.
Scenic value	The space contains distinctive and diverse features. There are memorable/key views and landmarks associated with the space.
Tranquillity	The space provides ample opportunity for quiet reflection.
Local in character	The space is part of the open countryside.

Changes since designation

No substantial change.

TLGSC4 - Corbyn's Head

Devon Landscape Character Area	None
Torbay Landscape Character Area	4H - Cliffs
Location	Torbay Road, Torbay, Torquay, Devon, England, TQ2 6
Other designations	None



© 2023 Microsoft Corporation © 2023 Maxar ©CNES (2023) Distribution Airbus DS.

Local Green Space Analysis

Proximity to the community	The space has a degree of proximity to the community / settlement. The community has some physical or visual relationship with the space, which forms a secondary node / link for the community.
Scenic quality designation	The space is not within a designated landscape.
Landscape condition	The landscape elements and overall structure within the space are in a good physical state.
Scenic value	The space contains distinctive and diverse features. There are memorable/key views and landmarks associated with the space.
Tranquillity	The space provides ample opportunity for quiet reflection.
Local in character	The space is self-contained.

Changes since designation

No substantial change.

TLGSC5 - Crownhill Park

Devon Landscape Character Area	None
Torbay Landscape Character Area	7 - Main cities and towns
Location	Crownhill Park, Torbay, Torquay, Devon, England, TQ2 5
Other designations	None



© 2023 Microsoft Corporation © 2023 Maxar ©CNES (2023) Distribution Airbus DS.

Local Green Space Analysis

Proximity to the community	The space is in immediate proximity to the community / settlement. The community has direct physical and / or visual connection with the space, which forms an essential node / focal point for the community.
Scenic quality designation	The space is not within a designated landscape.
Landscape condition	The landscape elements and overall structure within the space are in a good physical state.
Scenic value	The space does not contain distinctive and diverse features. There are no memorable/key views and landmarks associated with the space.
Tranquillity	The space provides some opportunity for quiet reflection.
Local in character	The space is self-contained.

Changes since designation

No substantial change.

TLGSC6 - Goshen Triangle

Devon Landscape Character Area	None
Torbay Landscape Character Area	7 - Main cities and towns
Location	17 Rosery Road, Torbay, Torquay, Devon, England, TQ2 6AX
Other designations	None



© 2023 Microsoft Corporation © 2023 Maxar ©CNES (2023) Distribution Airbus DS.

Local Green Space Analysis

Proximity to the community	Well connected.
Scenic quality designation	The space is not within a designated landscape.
Landscape condition	The landscape elements and overall structure within the space are in a moderate physical state.
Scenic value	The space does not contain distinctive and diverse features. There are no memorable/key views and landmarks associated with the space.
Tranquillity	The space provides some opportunity for quiet reflection.
Local in character	The space is self-contained.

Changes since designation

Addition of benches and play equipment for community use.

TLGSC7 - Highlands/Sherwell Valley Allotments

Devon Landscape Character Area	None
Torbay Landscape Character Area	7 - Main cities and towns
Location	Sherwell Valley, Torquay South Devon TQ2 6NL
Other designations	ULPA (C5.13 Markham Plantation & Sherwell Valley)



© 2023 Microsoft Corporation © 2023 Maxar ©CNES (2023) Distribution Airbus DS.

Local Green Space Analysis

Proximity to the community	The space is in immediate proximity to the community / settlement. The community has direct physical and / or visual connection with the space, which forms an essential node / focal point for the community.
Scenic quality designation	The space is within a locally designated ULPA.
Landscape condition	The landscape elements and overall structure within the space are in a moderate physical state.
Scenic value	The space does not contain distinctive and diverse features. There are no memorable/key views and landmarks associated with the space.
Tranquillity	The space provides some opportunity for quiet reflection.
Local in character	The space is self-contained.

Changes since designation

No substantial change.

TLGSC8 - Hollicombe Park

Devon Landscape Character Area	None
Torbay Landscape Character Area	4G - Low lying coast and beach
Location	Torbay Road, Torbay, Paignton, Devon, England, TQ3 2
Other designations	None



Local Green Space Analysis

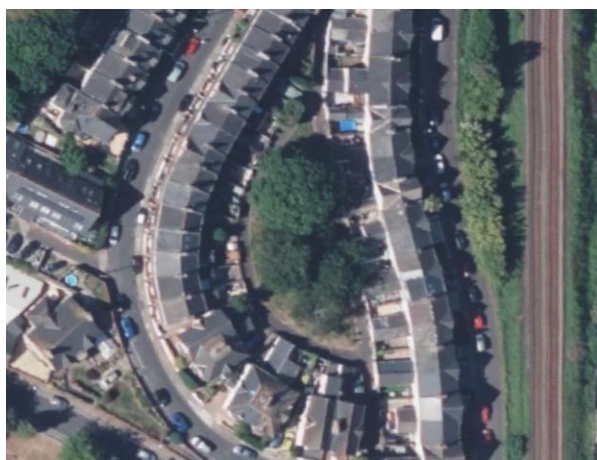
Proximity to the community	The space has a degree of proximity to the community / settlement. The community has some physical or visual relationship with the space, which forms a secondary node / link for the community.
Scenic quality designation	The space is not within a designated landscape.
Landscape condition	The landscape elements and overall structure within the space are in a good physical state.
Scenic value	The space contains a few distinctive and diverse features. There are limited memorable/key views and landmarks associated with the space.
Tranquillity	The space provides some opportunity for quiet reflection.
Local in character	The space is predominantly self-contained.

Changes since designation

No substantial change.

TLGSC9 - Innerbrook/Sandford Green Space

Devon Landscape Character Area	None
Torbay Landscape Character Area	7 - Main cities and towns
Location	11 Sanford Road, Torbay, Torquay, Devon, England, TQ2 6AN
Other designations	None



© 2023 Microsoft Corporation © 2023 Maxar ©CNES (2023) Distribution Airbus DS.

Local Green Space Analysis

Proximity to the community	The space is in immediate proximity to the community / settlement. The community has direct physical and / or visual connection with the space, which forms an essential node / focal point for the community.
Scenic quality designation	The space is not within a designated landscape.
Landscape condition	The landscape elements and overall structure within the space are in a moderate physical state.
Scenic value	The space does not contain distinctive and diverse features. There are no memorable/key views and landmarks associated with the space.
Tranquillity	The space provides some opportunity for quiet reflection.
Local in character	The space is self-contained.

Changes since designation

Removal of a mature tree.

TLGSC10 - Kings Gardens

Devon Landscape Character Area	None
Torbay Landscape Character Area	4G - Low lying coast and beach
Location	The King's Drive, Torquay, Devon, England, TQ2 5JE
Other designations	ULPA (C.29 Torre Abbey Meadows and Sports Grounds)



© 2023 Microsoft Corporation © 2023 Maxar ©CNES (2023) Distribution Airbus DS.

Local Green Space Analysis

Proximity to the community	The space has a degree of proximity to the community / settlement. The community has some physical or visual relationship with the space, which forms a secondary node / link for the community.
Scenic quality designation	The space is within a locally designated ULPA.
Landscape condition	The landscape elements and overall structure within the space are in a good physical state.
Scenic value	The space contains distinctive and diverse features. There are memorable/key views and landmarks associated with the space.
Tranquillity	The space provides some opportunity for quiet reflection.
Local in character	The space is predominantly self-contained.

Changes since designation

Some ornamental planting beds removed and replaced with grass. Newly created Rifles Garden

TLGSC11 - Occombe Farm

Devon Landscape Character Area	Torbay Hinterland
Torbay Landscape Character Area	3A - Upper farmed and wooded valley slopes
Location	Preston Down Road, Preston, Marldon, Paignton, Devon, England TQ3 1RN
Other designations	None



© 2023 Microsoft Corporation © 2023 Maxar ©CNES (2023) Distribution Airbus DS.

Local Green Space Analysis

Proximity to the community	The space is detached / removed from the community / settlement. There is poor connectivity between the community and space, with limited / no visual or physical link.
Scenic quality designation	The space is not within a designated landscape.
Landscape condition	The landscape elements and overall structure within the space are in a good physical state.
Scenic value	The space contains a few distinctive and diverse features. There are limited memorable/key views and landmarks associated with the space.
Tranquillity	The space provides some opportunity for quiet reflection.
Local in character	The space is part of the open countryside.

Changes since designation

Continued diversification and expansion of Occombe Farm (Torbay Coast and Countryside Trust) facilities.

TLGSC12 - Piggeries Green Space

Devon Landscape Character Area	Torbay Hinterland
Torbay Landscape Character Area	3A - Upper farmed and wooded valley slopes
Location	Nut Bush Lane, Torbay, Torquay, Devon, England, TQ2 6
Other designations	None



Local Green Space Analysis

Proximity to the community	The space has a degree of proximity to the settlement. The community has some physical or visual relationship with the space, which forms a secondary node / link for the community.
Scenic quality designation	The space is not within a designated landscape.
Landscape condition	The landscape elements and overall structure within the space are in a good physical state.
Scenic value	The space contains a few distinctive and diverse features. There are limited memorable/key views and landmarks associated with the space.
Tranquillity	The space provides ample opportunity for quiet reflection.
Local in character	The space is part of the open countryside.

Changes since designation

No substantial change.

TLGSC13 - Preston Primary School Play Park

Devon Landscape Character Area	None
Torbay Landscape Character Area	7A - Wooded Valleys
Location	Old Paignton Road, Torquay, Devon, England, TQ2 6
Other designations	None



© 2023 Microsoft Corporation © 2023 Maxar ©CNES (2023) Distribution Airbus DS.

Local Green Space Analysis

Proximity to the community	The space is in immediate proximity to the community. The community has direct physical connection with the space, which forms an essential node for the community.
Scenic quality designation	The space is not within a designated landscape.
Landscape condition	The landscape elements and overall structure within the space are in a good physical state.
Scenic value	The space does not contain distinctive and diverse features. There are no memorable/key views and landmarks associated with the space.
Tranquillity	The space provides limited opportunity for quiet reflection.
Local in character	The space is self-contained.

Changes since designation

No substantial change.

TLGSC14 - Rocket Park

Devon Landscape Character Area	None
Torbay Landscape Character Area	7 - Main cities and towns
Location	26 Mallock Road, Torbay, Torquay, Devon, England, TQ2 6AF
Other designations	None



© 2023 Microsoft Corporation © 2023 Maxar ©CNES (2023) Distribution Airbus DS.

Local Green Space Analysis

Proximity to the community	The space is in immediate proximity to the community / settlement. The community has direct physical and visual connection with the space, which forms an essential node / focal point for the community.
Scenic quality designation	The space is not within a designated landscape.
Landscape condition	The landscape elements and overall landscape structure within the space are in a moderate physical state.
Scenic value	The space does not contain distinctive and diverse features. There are no memorable/key views and landmarks associated with the space.
Tranquillity	The space provides limited opportunity for quiet reflection.
Local in character	The space is self-contained.

Changes since designation

No substantial change.

TLGSC15 - Sherwell Park

Devon Landscape Character Area	None
Torbay Landscape Character Area	7 - Main cities and towns
Location	Mallock Road, Torbay, Torquay, Devon, England, TQ2 6
Other designations	ULPA (C5.30 Sherwell Park)



© 2023 Microsoft Corporation © 2023 Maxar ©CNES (2023) Distribution Airbus DS.

Local Green Space Analysis

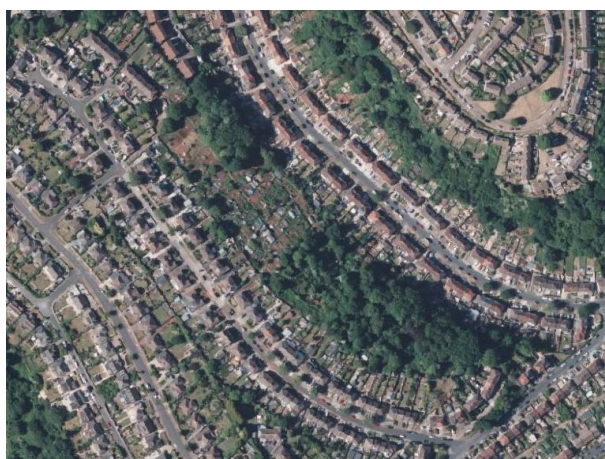
Proximity to the community	The space is in immediate proximity to the community / settlement. The community has direct physical and visual connection with the space, which forms an essential node / focal point for the community.
Scenic quality designation	The space is within a locally designated ULPA.
Landscape condition	The landscape elements and overall structure within the space are in a good physical state.
Scenic value	The space contains a few distinctive and diverse features. There are limited memorable/key views and landmarks associated with the space.
Tranquillity	The space provides opportunity for quiet reflection.
Local in character	The space is self-contained.

Changes since designation

No substantial change.

TLGSC16 - Sherwell Valley/Grenville Green Space (Markham Plantation)

Devon Landscape Character Area	None
Torbay Landscape Character Area	7 - Main cities and towns
Location	5-59 Highland Road, Torbay, Torquay, Devon, England, TQ2 6NL
Other designations	ULPA (C5.13 Markham Plantation & Sherwell Valley



© 2023 Microsoft Corporation © 2023 Maxar ©CNES (2023) Distribution Airbus DS.

Local Green Space Analysis

Proximity to the community	The space is in immediate proximity to the community / settlement. The community has direct physical connection with the space, which forms an essential node for the community.
Scenic quality designation	The space is within a locally designated ULPA.
Landscape condition	The landscape elements and overall structure within the space are in a moderate physical state.
Scenic value	The space does not contain distinctive and diverse features. There are no memorable/key views and landmarks associated with the space.
Tranquillity	The space provides some opportunity for quiet reflection.
Local in character	The space is self-contained.

Changes since designation

No substantial change.

TLGSC17 - St Matthew's Field

Devon Landscape Character Area	None
Torbay Landscape Character Area	7 - Main cities and towns
Location	Saint Matthew's Road, Torbay, Torquay, Devon, England, TQ2 6
Other designations	ULPA (C5.32 St. Matthew's Field)



Local Green Space Analysis

Proximity to the community	The space is in immediate proximity to the community / settlement. The community has direct physical and visual connection with the space, which forms an essential node / focal point for the community.
Scenic quality designation	The space is within a locally designated ULPA.
Landscape condition	The landscape elements and overall structure within the space are in a good physical state.
Scenic value	The space contains a few distinctive and diverse features. There are limited memorable/key views and landmarks associated with the space.
Tranquillity	The space provides ample opportunity for quiet reflection.
Local in character	The space is self-contained.

Changes since designation

No substantial change.

TLGSC18 - Torre Valley North & South Sports Fields

Devon Landscape Character Area

None

Torbay Landscape Character Area

4G - Low lying coast and beach

Location

Rathmore Road, Torbay, Torquay, Devon, England, TQ2 6

Other designations

ULPA (C5.29 Torre abbey Meadows & Sports Grounds)



Local Green Space Analysis

Proximity to the community	The space has a degree of proximity to the community / settlement. The community has some physical or visual relationship with the space, which forms a secondary node for the community.
Scenic quality designation	The space is within a locally designated ULPA.
Landscape condition	The landscape elements and overall structure within the space are in a moderate physical state.
Scenic value	The space does not contain distinctive and diverse features. There are no memorable/key views and landmarks associated with the space.
Tranquillity	The space provides some opportunity for quiet reflection.
Local in character	The space is self-contained.

Changes since designation

No substantial change.

TLGSC19 - Rugby/Cricket Club & Bowling Club

Devon Landscape Character Area	None
Torbay Landscape Character Area	4G - Low lying coast and beach
Location	Rathmore Road, Torbay, Torquay, Devon, England, TQ2 6NX
Other designations	ULPA (C5.29 Torre abbey Meadows & Sports Grounds)



Local Green Space Analysis

Proximity to the community	The space has a degree of proximity to the community / settlement. The community has some physical or visual relationship with the space, which forms a secondary node for the community.
Scenic quality designation	The space is within a locally designated ULPA.
Landscape condition	The landscape elements and overall structure within the space are in a moderate physical state.
Scenic value	The space does not contain distinctive and diverse features. There are no memorable/key views and landmarks associated with the space.
Tranquillity	The space provides some opportunity for quiet reflection.
Local in character	The space is self-contained.

Changes since designation

No substantial change.

TLGSC20 - Two Parks

Devon Landscape Character Area	None
Torbay Landscape Character Area	7 - Main cities and towns
Location	Solsbro Road, Torquay TQ2 6PE
Other designations	None



Local Green Space Analysis

Proximity to the community	The space has a degree of proximity to the community. The community has some physical relationship with the space, which forms a secondary node for the community.
Scenic quality designation	The space is not within a designated landscape.
Landscape condition	The landscape elements and overall structure within the space are in a good physical state.
Scenic value	The space does not contain distinctive and diverse features. There are no memorable/key views and landmarks associated with the space.
Tranquillity	The space provides ample opportunity for quiet reflection.
Local in character	The space is self-contained.

Changes since designation

No substantial change.

TLGSC21 - Victoria Park

Devon Landscape Character Area	None
Torbay Landscape Character Area	7 - Main cities and towns
Location	Sherwell Valley Road, Torbay, Torquay, Devon, England, TQ2 6
Other designations	None



Local Green Space Analysis

Proximity to the community	The space is in immediate proximity to the community. The community has direct physical and visual connection with the space, which forms an essential node / focal point for the community.
Scenic quality designation	The space is not within a designated landscape.
Landscape condition	The landscape elements and overall structure within the space are in a moderate physical state.
Scenic value	The space does not contain distinctive and diverse features. There are no memorable/key views and landmarks associated with the space.
Tranquillity	The space provides some opportunity for quiet reflection.
Local in character	The space is self-contained.

Changes since designation

No substantial change.

TLGSC22 - Hollicombe Brake

Devon Landscape Character Area	None
Torbay Landscape Character Area	7 - Main cities and towns
Location	Old Paignton Road, Paignton TQ2 6UU
Other designations	None



Local Green Space Analysis

Proximity to the community	The space has a degree of proximity to the community / settlement. The community has some physical and visual relationship with the space.
Scenic quality designation	The space is not within a designated landscape.
Landscape condition	The landscape elements and overall structure within the space are in a moderate physical state.
Scenic value	The space does not contain distinctive and diverse features. There are no memorable/key views and landmarks associated with the space.
Tranquillity	The space provides limited opportunity for quiet reflection.
Local in character	The space is predominantly self-contained.

Changes since designation

Change in adjacent land use, resulting in invasion of non-native species.

TLGSC23 - Scadson Valley Green Space

Devon Landscape Character Area	Torbay Hinterland
Torbay Landscape Character Area	7A - Wooded Valleys
Location	Cockington Road, Marldon, Torquay, Paignton, Devon, England, TQ3 1RW
Other designations	None



Local Green Space Analysis

Proximity to the community	The space has a degree of proximity to the community / settlement. The community has some physical relationship with the space.
Scenic quality designation	The space is not within a designated landscape.
Landscape condition	The landscape elements and overall structure within the space are in a moderate physical state.
Scenic value	The space contains a few distinctive and diverse features. There are limited memorable/key views and landmarks associated with the space.
Tranquillity	The space provides some opportunity for quiet reflection.
Local in character	The space is predominantly self-contained.

Changes since designation

No substantial change.

TLGSE1 - Belmont Park

Devon Landscape Character Area	None
Torbay Landscape Character Area	7 - Main cities and towns
Location	Woodville Road, Torbay, Torquay, Devon, England, TQ1 1NF
Other designations	None



Local Green Space Analysis

Proximity to the community	The space is in immediate proximity to the community / settlement and it is a community focal point.
Scenic quality designation	The space is not within a designated landscape.
Landscape condition	The landscape elements and overall structure within the space are in a moderate physical state.
Scenic value	The space does not contain distinctive and diverse features. There are no memorable/key views and landmarks associated with the space.
Tranquillity	The space provides opportunity for quiet reflection.
Local in character	The space is self-contained.

Changes since designation

No substantial change.

TLGSE2 - Brewery Park

Devon Landscape Character Area	None
Torbay Landscape Character Area	7 - Main cities and towns
Location	10 Princes Road East, Torbay, Torquay, Devon, England, TQ1 1PE
Other designations	None



Local Green Space Analysis

Proximity to the community	The space is in immediate proximity to the community / settlement. The community has direct physical and visual connection with the space.
Scenic quality designation	The space is not within a designated landscape.
Landscape condition	The landscape elements and overall structure within the space are in a poor physical state.
Scenic value	The space does not contain distinctive and diverse features. There are no memorable/key views and landmarks associated with the space.
Tranquillity	The space provides some opportunity for quiet reflection.
Local in character	The space is self-contained.

Changes since designation

No substantial change.

TLGSE3 - Castle Road Park

Devon Landscape Character Area	None
Torbay Landscape Character Area	7 - Main cities and towns
Location	12-40 Castle Rd, Torquay TQ1 3BG
Other designations	None



© 2023 Microsoft Corporation © 2023 Maxar ©CNES (2023) Distribution Airbus DS.

Local Green Space Analysis

Proximity to the community	The space is in immediate proximity to the community / settlement.
Scenic quality designation	The space is not within a designated landscape.
Landscape condition	The landscape elements and overall structure within the space are in a moderate physical state.
Scenic value	The space contains a few distinctive and diverse features. There are limited memorable/key views and landmarks associated with the space.
Tranquillity	The space provides some opportunity for quiet reflection.
Local in character	The space is self-contained.

Changes since designation

No substantial change.

TLGSE4 - Ellacombe Park

Devon Landscape Character Area	None
Torbay Landscape Character Area	7 - Main cities and towns
Location	Ellacombe Road, Torbay, Torquay, Devon, England, TQ1 1NL
Other designations	None



Local Green Space Analysis

Proximity to the community	The space is in immediate proximity to the community / settlement. The community has direct physical and visual connection with the space, which form an essential node for the community.
Scenic quality designation	The space is not within a designated landscape.
Landscape condition	The landscape elements and overall structure within the space are in a moderate physical state.
Scenic value	The space does not contain distinctive and diverse features. There are no memorable/key views and landmarks associated with the space.
Tranquillity	The space provides some opportunity for quiet reflection.
Local in character	The space is self-contained.

Changes since designation

No substantial change.

TLGSE5 - Quinta/Windsor Road Allotments

Devon Landscape Character Area	None
Torbay Landscape Character Area	7 - Main cities and towns
Location	144 Windsor Road, Torbay, Torquay, Devon, England, TQ1 1SR
Other designations	None



Local Green Space Analysis

Proximity to the community	The space is in immediate proximity to the community. The community has direct physical connection with the space, which forms an essential focal point for the community.
Scenic quality designation	The space is not within a designated landscape.
Landscape condition	The landscape elements and overall structure within the space are in a moderate physical state.
Scenic value	The space does not contain distinctive and diverse features. There are no memorable/key views and landmarks associated with the space.
Tranquillity	The space provides some opportunity for quiet reflection.
Local in character	The space is self-contained.

Changes since designation

No substantial change.

TLGSE6 - Stentiford Hill Park

Devon Landscape Character Area	None
Torbay Landscape Character Area	7 - Main cities and towns
Location	16-20 Alpine Road, Torbay, Torquay, Devon, England, TQ1 1RE
Other designations	None



Local Green Space Analysis

Proximity to the community	The space is in immediate proximity to the settlement. The community has direct physical and visual connection with the space, which forms a focal point for the community.
Scenic quality designation	The space is not within a designated landscape.
Landscape condition	The landscape elements and overall structure within the space are in a poor physical state.
Scenic value	The space contains a few distinctive and diverse features. There are limited memorable/key views and landmarks associated with the space.
Tranquillity	The space provides some opportunity for quiet reflection.
Local in character	The space is predominantly self-contained.

Changes since designation

Benches in disrepair and signs of neglect/vandalism.

TLGSE7 - Warberry Copse

Devon Landscape Character Area	None
Torbay Landscape Character Area	7 - Main cities and towns
Location	6-20 Grange Road, Torbay, Torquay, Devon, England, TQ1 1JZ
Other designations	ULPA (C5.18 Grange Road/Warberry Copse)



Local Green Space Analysis

Proximity to the community	The space has a degree of proximity to the settlement. The community has some physical and visual relationship with the space, which forms node and link for the community.
Scenic quality designation	The space is within a locally designated ULPA.
Landscape condition	The landscape elements and overall structure within the space are in a moderate physical state.
Scenic value	The space does not contain distinctive and diverse features. There are no memorable/key views and landmarks associated with the space.
Tranquillity	The space provides opportunity for quiet reflection.
Local in character	The space is self-contained.

Changes since designation

No substantial change.

TLGSH1 - Cricketer's Field

Devon Landscape Character Area	None
Torbay Landscape Character Area	7 - Main cities and towns
Location	10-14 Cricketers Green, Torbay, Torquay, Devon, England, TQ2 7
Other designations	None



© 2023 Microsoft Corporation © 2023 Maxar ©CNES (2023) Distribution Airbus DS.

Local Green Space Analysis

Proximity to the community	The space is in immediate proximity to the community. The community has direct physical and visual connection with the space, which forms an essential node for the community.
Scenic quality designation	The space is not within a designated landscape.
Landscape condition	The landscape elements and overall structure within the space are in a good physical state.
Scenic value	The space does not contain distinctive and diverse features. There are no memorable/key views and landmarks associated with the space.
Tranquillity	The space provides limited opportunity for quiet reflection.
Local in character	The space is self-contained.

Changes since designation

Removal of large mature tree from car park and replacement tree planting.

TLGSH2 - Daison Wood

Devon Landscape Character Area	None
Torbay Landscape Character Area	7 - Main cities and towns
Location	2-62 Third Avenue, Torbay, Torquay, Devon, England, TQ1 4JF
Other designations	ULPA (C5.09 Daison Woods)



© 2023 Microsoft Corporation © 2023 Maxar ©CNES (2023) Distribution Airbus DS.

Local Green Space Analysis

Proximity to the community	There is poor connectivity between the community and space, with limited physical links. There is visual connectivity.
Scenic quality designation	The space is within a locally designated ULPA.
Landscape condition	The landscape elements and overall structure within the space are in a moderate physical state.
Scenic value	The space does not contain distinctive and diverse features. There are no memorable/key views and landmarks associated with the space.
Tranquillity	The space provides some opportunity for quiet reflection
Local in character	The space is predominantly self-contained.

Changes since designation

No substantial change.

TLGSH3 - Truro Bank

Devon Landscape Character Area	None
Torbay Landscape Character Area	7 - Main cities and towns
Location	85 Hele Road, Hele, Torbay, Torquay, Devon, England, TQ2 7PR
Other designations	None



Local Green Space Analysis

Proximity to the community	The space has a degree of proximity to the community. The community has some physical and visual relationship with the space, which forms a link for the community.
Scenic quality designation	The space is not within a designated landscape.
Landscape condition	The landscape elements and overall structure within the space are in a moderate physical state.
Scenic value	The space does not contain distinctive and diverse features. There are no memorable/key views and landmarks associated with the space.
Tranquillity	The space provides some opportunity for quiet reflection.
Local in character	The space is predominantly self-contained.

Changes since designation

No substantial change.

TLGSH4 - Windmill Hill Playing Field

Devon Landscape Character Area	None
Torbay Landscape Character Area	7 - Main cities and towns
Location	1-3 Pencorse Road, Torbay, Torquay, Devon, England, TQ2 7PE
Other designations	None



Local Green Space Analysis

Proximity to the community	The space is in immediate proximity to the community / settlement. The community has direct physical and visual connection with the space, which forms an essential node / focal point for the community.
Scenic quality designation	The space is not within a designated landscape.
Landscape condition	The landscape elements and overall structure within the space are in a moderate physical state.
Scenic value	The space contains a few distinctive and diverse features. There are memorable views associated with the space.
Tranquillity	The space provides opportunity for quiet reflection.
Local in character	The space is predominantly self-contained.

Changes since designation

No substantial change.

TLGSM1 - Babbacombe Downs

Devon Landscape Character Area

Breccia Hills and Coast

Torbay Landscape Character Area

4D - Coastal slopes and Combes

Location

58-70 Babbacombe Downs Road, Torbay,
Torquay, Devon, England, TQ1 3LU

Other designations

ULPA (C5.11 Babbacombe Downs)



Local Green Space Analysis

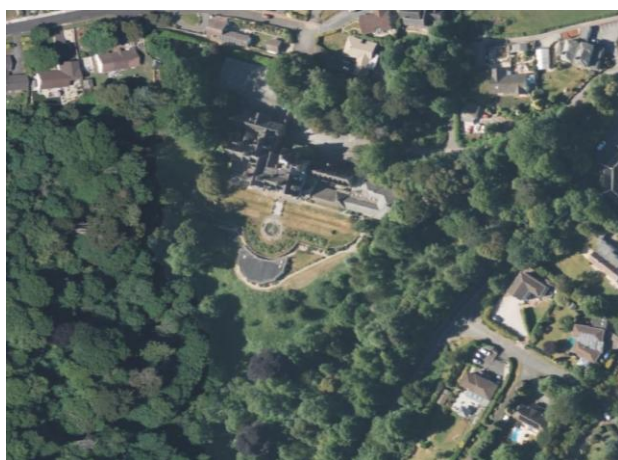
Proximity to the community	The space is in immediate proximity to the community / settlement. The community has direct physical and visual connection with the space, which forms an essential node / focal point for the community.
Scenic quality designation	The space is within a locally designated ULPA.
Landscape condition	The landscape elements and overall structure within the space are in a good physical state.
Scenic value	The space contains a few distinctive and diverse features. There are memorable views associated with the space.
Tranquillity	The space provides some opportunity for quiet reflection.
Local in character	The space is predominantly self-contained.

Changes since designation

No substantial change.

TLGSM2 - Brunel Manor Gardens & Grounds

Devon Landscape Character Area	None
Torbay Landscape Character Area	7 - Main cities and towns
Location	Teignmouth Road, Torbay, Torquay, Devon, England, TQ1 4SF
Other designations	ULPA (C5.01 Watcombe Park & Watcombe Heights)



© 2023 Microsoft Corporation © 2023 Maxar ©CNES (2023) Distribution Airbus DS.

Local Green Space Analysis

Proximity to the community	The space has a degree of proximity to the community / settlement. There is poor connectivity between the community and space, with no physical link, but visual connectivity.
Scenic quality designation	The space is within a locally designated ULPA.
Landscape condition	The landscape elements and overall structure within the space are in a poor physical state.
Scenic value	The space contains a few distinctive and diverse features. There are memorable / key views and landmarks associated with the space.
Tranquillity	The space provides some opportunity for quiet reflection.
Local in character	The space is predominantly self-contained.

Changes since designation

The manor and grounds have fallen into disrepair since it was last used in 2021.

TLGSM3 - Cary Park

Devon Landscape Character Area	None
Torbay Landscape Character Area	7 - Main cities and towns
Location	Cary Avenue, Torbay, Torquay, Devon, England, TQ1 3NQ
Other designations	ULPA (C5.12 Cary Park)



Local Green Space Analysis

Proximity to the community	The space is in immediate proximity to the community / settlement. The community has direct physical and visual connection with the space, which form an essential node / focal point for the community.
Scenic quality designation	The space is within a locally designated ULPA.
Landscape condition	The landscape elements and overall structure within the space are in a good physical state.
Scenic value	The space contains a few distinctive and diverse features. There are limited memorable/key views and landmarks associated with the space.
Tranquillity	The space provides opportunity for quiet reflection.
Local in character	The space is self-contained.

Changes since designation

Some tree loss in the western part of the park.

TLGSM4 - Easterfield Playing Fields

Devon Landscape Character Area

Breccia Hills and Coast

Torbay Landscape Character Area

4D - Coastal slopes and Combes

Location

Easterfield Lane, Torquay TQ1 4SW

Other designations

Undeveloped Coast (C2)



Local Green Space Analysis

Proximity to the community	The space has a degree of proximity to the community / settlement. The community has some physical or visual relationship with the space, which forms a secondary node for the community.
Scenic quality designation	The space is within the locally designated Undeveloped Coast.
Landscape condition	The landscape elements and overall structure within the space are in a moderate physical state.
Scenic value	The space contains a few distinctive and diverse features. There are limited memorable / key views and landmarks associated with the space.
Tranquillity	The space provides some opportunity for quiet reflection.
Local in character	The space is part of the open countryside.

Changes since designation

No substantial change.

TLGSM5 - Glen Sannox Memorial Gardens

Devon Landscape Character Area

Breccia Hills and Coast

Torbay Landscape Character Area

4D - Coastal slopes and Combes

Location

Beach Road, Torbay, Torquay, Devon, England,
TQ1 3LX

Other designations

Undeveloped Coast (C2)



© 2023 Microsoft Corporation © 2023 Maxar ©CNES (2023) Distribution Airbus DS.

Local Green Space Analysis

Proximity to the community	The space has a degree of proximity to the community / settlement. The community has some physical or visual relationship with the space, which forms a link for the community.
Scenic quality designation	The space is within the locally designated Undeveloped Coast.
Landscape condition	The landscape elements and overall structure within the space are in a moderate physical state.
Scenic value	The space does not contain distinctive and diverse features. There are no memorable/key views and landmarks associated with the space.
Tranquillity	The space provides some opportunity for quiet reflection.
Local in character	The space is part of the open countryside.

Changes since designation

No substantial change.

TLGSM6 - Hartop Road Allotments

Devon Landscape Character Area	None
Torbay Landscape Character Area	7 - Main cities and towns
Location	33 Hartop Road, Torbay, Torquay, Devon, England, TQ1 4QH
Other designations	None



Local Green Space Analysis

Proximity to the community	The space is in immediate proximity to the community / settlement. The community has direct physical connection with the space, which forms an essential link.
Scenic quality designation	The space is not within a designated landscape.
Landscape condition	The landscape elements and overall structure within the space are in a moderate physical state.
Scenic value	The space does not contain distinctive and diverse features. There are no memorable/key views and landmarks associated with the space.
Tranquillity	The space provides limited opportunity for quiet reflection.
Local in character	The space is predominantly self-contained.

Changes since designation

No substantial change.

TLGSM7 - Haytor Park

Devon Landscape Character Area	None
Torbay Landscape Character Area	7 - Main cities and towns
Location	157 Westhill Road, Torbay, Torquay, Devon, England, TQ1 4LT
Other designations	None



Local Green Space Analysis

Proximity to the community	The space has a degree of proximity to the community / settlement. The community has some physical with the space, which forms a secondary node for the community.
Scenic quality designation	The space is not within a designated landscape.
Landscape condition	The landscape elements and overall structure within the space are in a moderate physical state.
Scenic value	The space does not contain distinctive and diverse features. There are no memorable/key views and landmarks associated with the space.
Tranquillity	The space provides some opportunity for quiet reflection.
Local in character	The space is self-contained.

Changes since designation

No substantial change.

TLGSM8 - The Fields

Devon Landscape Character Area

Breccia Hills and Coast

Torbay Landscape Character Area

4D - Coastal slopes and Combes

Location

Teignmouth Road, Torbay, Torquay, Devon, England, TQ1 4SQ

Other designations

Undeveloped Coast (c2)



Local Green Space Analysis

Proximity to the community	The space has a degree of proximity to the community / settlement. The community has some physical and visual relationship with the space, which forms a secondary node / focal point and links for the community.
Scenic quality designation	The space is within the locally designated Undeveloped Coast.
Landscape condition	The landscape elements and overall landscape structure within the space are in a moderate physical state.
Scenic value	The space contains a few distinctive and diverse features. There are memorable / key views and landmarks associated with the space.
Tranquillity	The space provides ample opportunity for quiet reflection.
Local in character	The space is part of the open countryside.

Changes since designation

No substantial change.

TLGSM9 - Maidencombe Community Orchard

Devon Landscape Character Area	Breccia Hills and Coast
Torbay Landscape Character Area	4D - Coastal slopes and Combes
Location	Rock House Lane, Maidencombe, Torquay TQ1 4SU
Other designations	Undeveloped Coast (C2)



Local Green Space Analysis

Proximity to the community	Well connected
Scenic quality designation	The space is within the locally designated Undeveloped Coast.
Landscape condition	The landscape elements and overall structure within the space are in a good physical state
Scenic value	The space does not contain distinctive and diverse features. There are no memorable/key views and landmarks associated with the space
Tranquillity	The space provides opportunity for quiet reflection
Local in character	The space is part of the open countryside

Changes since designation

No substantial change.

TLGSM10 - Maidencombe Village Green

Devon Landscape Character Area

Breccia Hills and Coast

Torbay Landscape Character Area

4D - Coastal slopes and Combes

Location

Rock House Lane, Maidencombe, Torquay TQ1 4SU

Other designations

Undeveloped Coast (C2)



© 2023 Microsoft Corporation © 2023 Maxar ©CNES (2023) Distribution Airbus DS.

Local Green Space Analysis

Proximity to the community	The space has a degree of proximity to the community / settlement. The community has some physical and visual relationship with the space, which forms a secondary node.
Scenic quality designation	The space is partly within the locally designated Undeveloped Coast.
Landscape condition	The landscape elements and overall structure within the space are in a moderate physical state.
Scenic value	The space does not contain distinctive and diverse features. There are no memorable/key views and landmarks associated with the space.
Tranquillity	The space provides some opportunity for quiet reflection.
Local in character	The space is predominantly self-contained.

Changes since designation

No substantial change.

TLGSM11 - Millenium Copse

Devon Landscape Character Area	None
Torbay Landscape Character Area	7 - Main cities and towns
Location	Saint Marychurch Road, Torquay, Devon, England, TQ1 4
Other designations	ULPA (C5.10 St. Marychurch)



Local Green Space Analysis

Proximity to the community	The space is in immediate proximity to the community / settlement. The community has direct physical and / or visual connection with the space, which forms an essential node / focal point for the community.
Scenic quality designation	The space is within a locally designated ULPA.
Landscape condition	The landscape elements and overall structure within the space are in a good physical state.
Scenic value	The space contains a few distinctive and diverse features. There are limited memorable / key views and landmarks associated with the space.
Tranquillity	The space provides some opportunity for quiet reflection.
Local in character	The space is self-contained.

Changes since designation

No substantial change.

TLGSM12 - Petitor Downs

Devon Landscape Character Area	None
Torbay Landscape Character Area	7 - Main cities and towns
Location	Saint Marychurch Road, Torbay, Torquay, Devon, England, TQ1 4
Other designations	Undeveloped Coast (C2)



Local Green Space Analysis

Proximity to the community	The space is in immediate proximity to the community / settlement. The community has direct physical and / or visual connection with the space.
Scenic quality designation	The space is within the locally designated Undeveloped Coast.
Landscape condition	The landscape elements and overall landscape structure within the space are in a good physical state.
Scenic value	The space contains distinctive and diverse features. There are memorable / key views and landmarks associated with the space.
Tranquillity	The space provides ample opportunity for quiet reflection.
Local in character	The space is part of the open countryside.

Changes since designation

No substantial change.

TLGSM13 - Quinta Road Allotments

Devon Landscape Character Area	None
Torbay Landscape Character Area	7 - Main cities and towns
Location	19-23 Seaton Close, Torbay, Torquay, Devon, England, TQ1 3UH
Other designations	ULPA (C5.19 The Qunita)



Local Green Space Analysis

Proximity to the community	The space is in immediate proximity to the community / settlement. The community has direct physical and visual connection with the space, which forms an essential node / focal point for the community.
Scenic quality designation	The space is within a locally designated ULPA.
Landscape condition	The landscape elements and overall landscape structure within the space are in a moderate physical state.
Scenic value	The space contains distinctive and diverse features. There are memorable/key views and landmarks associated with the space.
Tranquillity	The space provides some opportunity for quiet reflection.
Local in character	The space is predominantly self-contained.

Changes since designation

No substantial change.

TLGSM14 - Quinta Road School Playing Fields

Devon Landscape Character Area	None
Torbay Landscape Character Area	7 - Main cities and towns
Location	19-23 Seaton Close, Torbay, Torquay, Devon, England, TQ1 3UH
Other designations	ULPA (C5.19 The Quinta)



Local Green Space Analysis

Proximity to the community	The space is in immediate proximity to the community / settlement. The community has direct physical and visual connection with the space, which forms an essential node / focal point for the community.
Scenic quality designation	The space is within a locally designated ULPA.
Landscape condition	The landscape elements and overall landscape structure within the space are in a moderate physical state.
Scenic value	There are memorable/key views and landmarks associated with the space.
Tranquillity	The space provides some opportunity for quiet reflection.
Local in character	The space is predominantly self-contained.

Changes since designation

No substantial change.

TLGSM15 - Plainmoor Recreation Ground

Devon Landscape Character Area	None
Torbay Landscape Character Area	7 - Main cities and towns
Location	Saint Paul's Crescent, Torbay, Torquay, Devon, England, TQ1 3QN
Other designations	None



Local Green Space Analysis

Proximity to the community	The space is in immediate proximity to the community / settlement. The community has direct physical and / or visual connection with the space, which forms an essential node / focal point for the community.
Scenic quality designation	The space is not within a designated landscape.
Landscape condition	The landscape elements and overall landscape structure within the space are in a moderate physical state.
Scenic value	The space does not contain distinctive and diverse features. There are no memorable / key views and landmarks associated with the space.
Tranquillity	The space provides limited opportunity for quiet reflection.
Local in character	The space is self-contained.

Changes since designation

No substantial change.

TLGSM16 - Tessier Gardens

Devon Landscape Character Area	None
Torbay Landscape Character Area	7 - Main cities and towns
Location	Manor Road, Torquay, TQ1 3JX
Other designations	None



Local Green Space Analysis

Proximity to the community	The space is in immediate proximity to the community / settlement. The community has direct physical and / or visual connection with the space, which forms an essential node / focal point for the community.
Scenic quality designation	The space is not within a designated landscape.
Landscape condition	The landscape elements and overall landscape structure within the space are in a good physical state.
Scenic value	The space contains distinctive and diverse features. There are memorable / key views and landmarks associated with the space.
Tranquillity	The space provides opportunity for quiet reflection.
Local in character	The space is self-contained.

Changes since designation

No substantial change.

TLGSM17 - The Grove

Devon Landscape Character Area

Breccia Hills and Coast

Torbay Landscape Character Area

4D - Coastal slopes and Combes

Location

Beach Road, Torbay, Torquay, Devon, England,
TQ1 3LX

Other designations

Undeveloped Coast (C2)



Local Green Space Analysis

Proximity to the community	The space has a degree of proximity to the community. The community has some physical or visual relationship with the space, which forms a link.
Scenic quality designation	The space is within the locally designated Undeveloped Coast.
Landscape condition	The landscape elements and overall structure within the space are in a moderate physical state
Scenic value	The space does not contain distinctive and diverse features. There are no memorable/key views and landmarks associated with the space
Tranquillity	The space provides some opportunity for quiet reflection.
Local in character	The space is part of the open countryside.

Changes since designation

No substantial change.

TLGSM18 - King George V Playing Fields

Devon Landscape Character Area

Breccia Hills and Coast

Torbay Landscape Character Area

4D - Coastal slopes and Combes

Location

Easterfield Lane, Torquay TQ1 4SP

Other designations

Undeveloped Coast (C2)



Local Green Space Analysis

Proximity to the community	The space has a degree of proximity to the community / settlement. The community has some physical and visual relationship with the space, which forms a secondary node.
Scenic quality designation	The space is within the locally designated Undeveloped Coast.
Landscape condition	The landscape elements and overall structure within the space are in a moderate physical state.
Scenic value	The space does not contain distinctive and diverse features. There are key views of church towers in Torbay.
Tranquillity	The space provides some opportunity for quiet reflection.
Local in character	The space is part of the open countryside.

Changes since designation

Informal sports pitches removed.

TLGSM19 - The Rose Garden

Devon Landscape Character Area	None
Torbay Landscape Character Area	7 - Main cities and towns
Location	6 York Road, Torquay TQ1 3SG
Other designations	None



Local Green Space Analysis

Proximity to the community	The space is in immediate proximity to the settlement. The community has direct physical and visual connection with the space, which forms an essential focal point for the community.
Scenic quality designation	The space is not within a designated landscape.
Landscape condition	The landscape elements and overall structure within the space are in a good physical state
Scenic value	The space contains a few distinctive and diverse features. There are limited memorable/key views and landmarks associated with the space.
Tranquillity	The space provides some opportunity for quiet reflection.
Local in character	The space is self-contained.

Changes since designation

No substantial change.

TLGSM20 - Valley of the Rocks

Devon Landscape Character Area

Breccia Hills and Coast

Torbay Landscape Character Area

4D - Coastal slopes and Combes

Location

Watcombe Beach Road, Torquay TQ1 4SH

Other designations

Undeveloped Coast (C2)



Local Green Space Analysis

Proximity to the community	The space has a degree of proximity to the settlement. The community has some physical relationship with the space, which forms a secondary focal point / link for the community.
Scenic quality designation	The space is within the locally designated Undeveloped Coast.
Landscape condition	The landscape elements and overall structure within the space are in a good physical state.
Scenic value	The space contains a few distinctive and diverse features. There are limited memorable/key views and landmarks associated with the space.
Tranquillity	The space provides opportunity for quiet reflection.
Local in character	The space is part of the open countryside.

Changes since designation

Some limited tree clearance within the central LGS.

TLGSM21 - Walls Hill

Devon Landscape Character Area	Breccia Hills and Coast
Torbay Landscape Character Area	4D - Coastal slopes and Combes
Location	Walls Hill Road, Torquay TQ1 3LZ
Other designations	Undeveloped Coast (C2)



Local Green Space Analysis

Proximity to the community	The space has a degree of proximity to the settlement. The community has some physical and visual relationship with the space, which forms a secondary focal point and link for the community.
Scenic quality designation	The space is partly within the locally designated Undeveloped Coast.
Landscape condition	The landscape elements and overall structure within the space are in a moderate physical state.
Scenic value	There are memorable / key views and landmarks associated with the space.
Tranquillity	The space provides opportunity for quiet reflection.
Local in character	The space is part of the open countryside.

Changes since designation

No substantial change.

TLGSM22 - Walls Hill Slopes

Devon Landscape Character Area

Breccia Hills and Coast

Torbay Landscape Character Area

4H - Cliffs

Location

Walls Hill Road, Torquay, Devon, England, TQ1 3LZ

Other designations

Undeveloped Coast (C2)



Local Green Space Analysis

Proximity to the community	The space has a degree of proximity to the settlement. The community has some physical and visual relationship with the space, which forms a secondary focal point and link for the community.
Scenic quality designation	The space is partly within the locally designated Undeveloped Coast.
Landscape condition	The landscape elements and overall structure within the space are in a moderate physical state.
Scenic value	There are memorable / key views and landmarks associated with the space.
Tranquillity	The space provides opportunity for quiet reflection.
Local in character	The space is part of the open countryside.

Changes since designation

No substantial change.

TLGSM23 - William's Field

Devon Landscape Character Area	None
Torbay Landscape Character Area	7 - Main cities and towns
Location	119 Combe Lane, Torbay, Torquay, Devon, England, TQ2 8EA
Other designations	None



Local Green Space Analysis

Proximity to the community	The space is in immediate proximity to the community. The community has direct physical and / or visual connection with the space, which forms an essential node for the community.
Scenic quality designation	The space is not within a designated landscape.
Landscape condition	The landscape elements and overall structure within the space are in a moderate physical state.
Scenic value	The space does not contain distinctive and diverse features. There are no memorable/key views and landmarks associated with the space.
Tranquillity	The space provides some opportunity for quiet reflection.
Local in character	The space is self-contained.

Changes since designation

No substantial change.

TLGSS1 - Cadewell Park Green

Devon Landscape Character Area	None
Torbay Landscape Character Area	7 - Main cities and towns
Location	Cadewell Park Road, Torbay, Torquay, Devon, England, TQ2 7JU
Other designations	None



Local Green Space Analysis

Proximity to the community	The space is in immediate proximity to the community. The community has direct physical and visual connection with the space, which forms an essential node/focal point for the community.
Scenic quality designation	The space is not within a designated landscape.
Landscape condition	The landscape elements and overall structure within the space are in a good physical state.
Scenic value	The space does not contain distinctive and diverse features. There are no memorable/key views and landmarks associated with the space.
Tranquillity	The space provides some opportunity for quiet reflection.
Local in character	The space is self-contained.

Changes since designation

No substantial change.

TLGSS2 - Darwin Park

Devon Landscape Character Area	None
Torbay Landscape Character Area	7 - Main cities and towns
Location	4 Darwin Crescent, Torbay, Torquay, Devon, England, TQ2 7FL
Other designations	None



Local Green Space Analysis

Proximity to the community	The space is in immediate proximity to the community. The community has direct physical and visual connection with the space, which forms an essential node for the community.
Scenic quality designation	The space is not within a designated landscape.
Landscape condition	The landscape elements and overall structure within the space are in a moderate physical state.
Scenic value	The space does not contain distinctive and diverse features. There are no memorable / key views and landmarks associated with the space.
Tranquillity	The space provides some opportunity for quiet reflection.
Local in character	The space is self-contained.

Changes since designation

No substantial change.

TLGSS3 - Ellacombe Plantation

Devon Landscape Character Area	None
Torbay Landscape Character Area	7 - Main cities and towns
Location	2-12 Kittiwake Drive, Torbay, Torquay, Devon, England, TQ2 7TR
Other designations	ULPA (C5.05 Scotts Bridge Barton)



Local Green Space Analysis

Proximity to the community	The space is in immediate proximity to the community. The community has direct physical and visual connection with the space, which forms an essential focal point for the community.
Scenic quality designation	The space is within a locally designated ULPA.
Landscape condition	The landscape elements and overall structure within the space are in a moderate physical state.
Scenic value	The space does not contain distinctive and diverse features. There are no memorable/key views and landmarks associated with the space.
Tranquillity	The space provides some opportunity for quiet reflection.
Local in character	The space is self-contained.

Changes since designation

No substantial change.

TLGSS4 - Exe Hill Green Space & Playground

Devon Landscape Character Area	None
Torbay Landscape Character Area	7 - Main cities and towns
Location	Exe Hill Park, Exe Hill, Torquay TQ2 7RG
Other designations	None



Local Green Space Analysis

Proximity to the community	The space is in immediate proximity to the community. The community has direct physical and visual connection with the space, which forms an essential node for the community.
Scenic quality designation	The space is not within a designated landscape.
Landscape condition	The landscape elements and overall structure within the space are in a moderate physical state.
Scenic value	The space does not contain distinctive and diverse features. There are no memorable / key views and landmarks associated with the space.
Tranquillity	The space provides some opportunity for quiet reflection.
Local in character	The space is self-contained.

Changes since designation

No substantial change.

TLGSS5 - Furzebrake Plantation

Devon Landscape Character Area	None
Torbay Landscape Character Area	7 - Main cities and towns
Location	Browns Bridge Road, Torbay, Torquay, Devon, England, TQ2 7BJ
Other designations	ULPA (C5.05 Scotts Bridge Barton)



Local Green Space Analysis

Proximity to the community	The space has a degree of proximity to the community. The community has some physical relationship with the space, which forms a secondary link for the community.
Scenic quality designation	The space is within a locally designated ULPA.
Landscape condition	The landscape elements and overall structure within the space are in a moderate physical state.
Scenic value	The space does not contain distinctive and diverse features. There are no memorable/key views and landmarks associated with the space.
Tranquillity	The space provides opportunity for quiet reflection.
Local in character	The space is predominantly self-contained.

Changes since designation

Woodland thinning, removal and replanting.

TLGSS6 - Green Space at Newton Road

Devon Landscape Character Area	None
Torbay Landscape Character Area	7 - Main cities and towns
Location	Newton Road, Torbay, Torquay, Devon, England, TQ2 7JA
Other designations	ULPA (C5.06 Riviera Way Corridor)



Local Green Space Analysis

Proximity to the community	The space has a degree of proximity to the community. The community has some physical or visual relationship with the space, which forms a secondary node / link for the community.
Scenic quality designation	The space is within a locally designated ULPA.
Landscape condition	The landscape elements and overall structure within the space are in a good physical state.
Scenic value	The space does not contain distinctive and diverse features. There are no memorable/key views and landmarks associated with the space.
Tranquillity	The space provides limited opportunity for quiet reflection.
Local in character	The space is predominantly self-contained.

Changes since designation

No substantial change.

TLGSS7 - Huntacott Way Green Space & Playground

Devon Landscape Character Area	None
Torbay Landscape Character Area	7 - Main cities and towns
Location	1 Huntacott Way, Torbay, Torquay, Devon, England, TQ2 7RL
Other designations	None



Local Green Space Analysis

Proximity to the community	The space is in immediate proximity to the community. The community has direct physical connection with the space, which forms an essential node for the community.
Scenic quality designation	The space is not within a designated landscape.
Landscape condition	The landscape elements and overall structure within the space are in a poor physical state.
Scenic value	The space does not contain distinctive and diverse features. There are no memorable/key views and landmarks associated with the space.
Tranquillity	The space provides limited opportunity for quiet reflection.
Local in character	The space is self-contained.

Changes since designation

No substantial change.

TLGSS8 - Kitson Park

Devon Landscape Character Area	None
Torbay Landscape Character Area	7 - Main cities and towns
Location	1-11 Higher Cadewell Lane, Torbay, Torquay, Devon, England, TQ2 7ET
Other designations	None



Local Green Space Analysis

Proximity to the community	The space has a degree of proximity to the community. The community has some physical and visual relationship with the space, which forms a secondary node.
Scenic quality designation	The space is not within a designated landscape.
Landscape condition	The landscape elements and overall structure within the space are in a good physical state.
Scenic value	The space does not contain distinctive and diverse features. There are no memorable/key views and landmarks associated with the space.
Tranquillity	The space provides opportunity for quiet reflection.
Local in character	The space is predominantly self-contained.

Changes since designation

New car park installed to north of the park.

TLGSS9 - Lindisfarne Park

Devon Landscape Character Area	None
Torbay Landscape Character Area	7 - Main cities and towns
Location	3-55 Windward Road, Torbay, Torquay, Devon, England, TQ2 7GA
Other designations	None



Local Green Space Analysis

Proximity to the community	The space is in immediate proximity to the community. The community has direct physical connection with the space, which forms an essential node and focal point for the community.
Scenic quality designation	The space is not within a designated landscape.
Landscape condition	The landscape elements and overall structure within the space are in a good physical state.
Scenic value	The space contains a few distinctive and diverse features. There are limited memorable/key views and landmarks associated with the space.
Tranquillity	The space provides opportunity for quiet reflection.
Local in character	The space is predominantly self-contained.

Changes since designation

No substantial change.

TLGSS10 - Lloyd Avenue Village Green

Devon Landscape Character Area	None
Torbay Landscape Character Area	7 - Main cities and towns
Location	Lloyd Avenue, Torbay, Torquay, Devon, England, TQ2 7DH
Other designations	None



Local Green Space Analysis

Proximity to the community	The space is in immediate proximity to the community. The community has direct physical connection with the space, which forms an essential focal point for the community.
Scenic quality designation	The space is not within a designated landscape
Landscape condition	The landscape elements and overall structure within the space are in a good physical state.
Scenic value	The space contains a few distinctive and diverse features. There are limited memorable/key views and landmarks associated with the space.
Tranquillity	The space provides limited opportunity for quiet reflection.
Local in character	The space is self-contained.

Changes since designation

No substantial change.

TLGSS11 - Montserrat Rise

Devon Landscape Character Area	None
Torbay Landscape Character Area	7 - Main cities and towns
Location	10 Grenadine Close, Torbay, Torquay, Devon, England, TQ2 7GN
Other designations	None



Local Green Space Analysis

Proximity to the community	The space is in immediate proximity to the community. The community has direct physical connection with the space, which forms an essential node for the community.
Scenic quality designation	The space is not within a designated landscape.
Landscape condition	The landscape elements and overall structure within the space are in a poor physical state.
Scenic value	The space does not contain distinctive and diverse features. There are no memorable/key views and landmarks associated with the space
Tranquillity	The space provides limited opportunity for quiet reflection.
Local in character	The space is predominantly self-contained.

Changes since designation

No substantial change.

TLGSS12 - Riviera Way Woodland

Devon Landscape Character Area	None
Torbay Landscape Character Area	7 - Main cities and towns
Location	Nicholson Road, Torbay, Torquay, Devon, England, TQ2 7TD
Other designations	ULPA (C5.06 Riviera Way Corridor)



Local Green Space Analysis

Proximity to the community	The space has a degree of proximity to the settlement. The community has some physical or visual relationship with the space, which forms a secondary node / link for the community.
Scenic quality designation	The space is within a locally designated ULPA.
Landscape condition	The landscape elements and overall structure within the space are in a moderate physical state.
Scenic value	The space does not contain distinctive and diverse features. There are no memorable/key views and landmarks associated with the space.
Tranquillity	The space provides limited opportunity for quiet reflection.
Local in character	The space is predominantly self-contained.

Changes since designation

Some vegetation clearance in the east of the LGS.

TLGSS13 - Shiphay Park

Devon Landscape Character Area	None
Torbay Landscape Character Area	7 - Main cities and towns
Location	2 Otter Close, Torbay, Torquay, Devon, England, TQ2 7FB
Other designations	None



Local Green Space Analysis

Proximity to the community	The space is in immediate proximity to the community. The community has direct physical connection with the space, which forms an essential node for the community.
Scenic quality designation	The space is not within a designated landscape.
Landscape condition	The landscape elements and overall structure within the space are in a good physical state.
Scenic value	The space contains a few distinctive and diverse features. There are limited memorable / key views and landmarks associated with the space.
Tranquillity	The space provides opportunity for quiet reflection.
Local in character	The space is self-contained.

Changes since designation

No substantial change.

TLGSS14 - South Parks Allotments

Devon Landscape Character Area	None
Torbay Landscape Character Area	7 - Main cities and towns
Location	1-1 Barton Hill Way, Torbay, Torquay, Devon, England, TQ2 8JG
Other designations	None



Local Green Space Analysis

Proximity to the community	The space is in immediate proximity to the community. The community has direct physical connection with the space, which forms an essential node for the community.
Scenic quality designation	The space is not within a designated landscape.
Landscape condition	The landscape elements and overall structure within the space are in a moderate physical state.
Scenic value	The space does not contain distinctive and diverse features. There are no memorable/key views and landmarks associated with the space.
Tranquillity	The space provides opportunity for quiet reflection.
Local in character	The space is self-contained.

Changes since designation

No substantial change.

TLGSS15 - Beechfield Allotments

Devon Landscape Character Area	None
Torbay Landscape Character Area	7 - Main cities and towns
Location	Beechfield Avenue, Torquay, Devon, England, TQ2 8HU
Other designations	None



Local Green Space Analysis

Proximity to the community	The space has a degree of proximity to the settlement. The community has some physical or visual relationship with the space, which forms a secondary node / link for the community.
Scenic quality designation	The space is not within a designated landscape.
Landscape condition	The landscape elements and overall structure within the space are in a moderate physical state.
Scenic value	The space does not contain distinctive and diverse features. There are no memorable/key views and landmarks associated with the space.
Tranquillity	The space provides some opportunity for quiet reflection.
Local in character	The space is self-contained.

Changes since designation

No substantial change.

TLGST1 - Cary Green

Devon Landscape Character Area	None
Torbay Landscape Character Area	7 - Main cities and towns
Location	Cary Parade, Torbay, Torquay, Devon, England, TQ2 5EX
Other designations	None



Local Green Space Analysis

Proximity to the community	The space is in immediate proximity to the community / settlement. The community has direct physical and visual connection with the space, which forms an essential node / focal point for the community.
Scenic quality designation	The space is not within a designated landscape.
Landscape condition	The landscape elements and overall structure within the space are in a good physical state.
Scenic value	The space contains distinctive and diverse features. There are memorable / key views and landmarks associated with the space.
Tranquillity	The space provides some opportunity for quiet reflection.
Local in character	The space is self-contained.

Changes since designation

No substantial change.

TLGST2 - Promenade: Princess Gardens and the 'Sunken Gardens'

Devon Landscape Character Area	None
Torbay Landscape Character Area	4G - Low lying coast and beach
Location	Torbay Road, Torbay, Torquay, Devon, England, TQ2 5EZ
Other designations	None



Local Green Space Analysis

Proximity to the community	The space is in immediate proximity to the community / settlement. The community has direct physical and visual connection with the space, which forms an essential node / focal point for the community.
Scenic quality designation	The space is not within a designated landscape.
Landscape condition	The landscape elements and overall structure within the space are in a good physical state.
Scenic value	The space contains distinctive and diverse features. There are memorable / key views and landmarks associated with the space.
Tranquillity	The space provides ample opportunity for quiet reflection.
Local in character	The space is self-contained.

Changes since designation

No substantial change.

TLGST3 - Royal Terrace Gardens (Rock Walk)

Devon Landscape Character Area	None
Torbay Landscape Character Area	4G - Low lying coast and beach
Location	Torbay Road, Torbay, Torquay, Devon, England, TQ2 5HA
Other designations	None



Local Green Space Analysis

Proximity to the community	The space is in immediate proximity to the community / settlement. The community has direct physical and visual connection with the space, which forms an essential node / focal point for the community.
Scenic quality designation	The space is not within a designated landscape.
Landscape condition	The landscape elements and overall structure within the space are in a moderate physical state.
Scenic value	The space contains distinctive and diverse features. There are memorable / key views and landmarks associated with the space.
Tranquillity	The space provides some opportunity for quiet reflection.
Local in character	The space is self-contained.

Changes since designation

No substantial change.

TLGST4 - Abbey Park and Meadows

Devon Landscape Character Area	None
Torbay Landscape Character Area	4G - Low lying coast and beach
Location	Torre Abbey Meadows, Torbay Road, Torquay TQ2 5DG
Other designations	ULPA (C5.29 Torre Abbey Meadows & Sports Grounds)



Local Green Space Analysis

Proximity to the community	The space is in immediate proximity to the community / settlement. The community has direct physical and visual connection with the space, which forms an essential node / focal point for the community.
Scenic quality designation	The space is within a locally designated ULPA.
Landscape condition	The landscape elements and overall structure within the space are in a good physical state.
Scenic value	The space contains distinctive and diverse features. There are memorable / key views and landmarks associated with the space.
Tranquillity	The space provides ample opportunity for quiet reflection.
Local in character	The space is self-contained.

Changes since designation

No substantial change.

TLGST5 - Old Maids Perch

Devon Landscape Character Area	None
Torbay Landscape Character Area	7 - Main cities and towns
Location	Shedden Hill Road, Torbay, Torquay, Devon, England, TQ2 5TY
Other designations	None



Local Green Space Analysis

Proximity to the community	The space is in immediate proximity to the community / settlement. The community has direct physical and visual connection with the space, which forms an essential node / focal point for the community.
Scenic quality designation	The space is not within a designated landscape.
Landscape condition	The landscape elements and overall structure within the space are in a good physical state.
Scenic value	The space contains a few distinctive and diverse features. There are limited memorable / key views and landmarks associated with the space.
Tranquillity	The space provides limited opportunity for quiet reflection.
Local in character	The space is self-contained.

Changes since designation

Eastern part of the LGS has been converted into a restaurant terrace.

TLGSTU1 - Brunswick Square

Devon Landscape Character Area	None
Torbay Landscape Character Area	7 - Main cities and towns
Location	Teignmouth Road, Torre, Torquay TQ1 4UT
Other designations	None



Local Green Space Analysis

Proximity to the community	The space is in immediate proximity to the community / settlement. The community has direct physical and visual connection with the space, which forms an essential node / focal point for the community.
Scenic quality designation	The space is not within a designated landscape.
Landscape condition	The landscape elements and overall structure within the space are in a good physical state.
Scenic value	The space contains a few distinctive and diverse features. There are limited memorable / key views and landmarks associated with the space.
Tranquillity	The space provides some opportunity for quiet reflection.
Local in character	The space is self-contained.

Changes since designation

No substantial change.

TLGSTU2 - Chapel Woods

Devon Landscape Character Area	None
Torbay Landscape Character Area	7 - Main cities and towns
Location	Chapel Hill Woods, Newton Road, Torquay TQ2 6AA
Other designations	ULPA (C5.16 Chapel Hill, Torre)



© 2023 Microsoft Corporation © 2023 Maxar ©CNES (2023) Distribution Airbus DS.

Local Green Space Analysis

Proximity to the community	The space has a degree of proximity to the community / settlement. The community has some physical or visual relationship with the space, which forms a secondary node / link for the community.
Scenic quality designation	The space is within a locally designated ULPA.
Landscape condition	The landscape elements and overall structure within the space are in a moderate physical state.
Scenic value	The space contains a few distinctive and diverse features. There are limited memorable/key views and landmarks associated with the space.
Tranquillity	The space provides opportunity for quiet reflection.
Local in character	The space is predominantly self-contained.

Changes since designation

No substantial change.

TLGSTU3 - Memorial Gardens

Devon Landscape Character Area	None
Torbay Landscape Character Area	7 - Main cities and towns
Location	Morgan Avenue, Torquay TQ2 5RP
Other designations	None



Local Green Space Analysis

Proximity to the community	The space is in immediate proximity to the community / settlement. The community has direct physical and visual connection with the space, which forms an essential node / focal point for the community.
Scenic quality designation	The space is not within a designated landscape.
Landscape condition	The landscape elements and overall structure within the space are in a good physical state.
Scenic value	The space contains a few distinctive and diverse features. There are limited memorable / key views and landmarks associated with the space.
Tranquillity	The space provides some opportunity for quiet reflection.
Local in character	The space is self-contained.

Changes since designation

No substantial change.

TLGSTU4 - Parkfield Road Gardens

Devon Landscape Character Area	None
Torbay Landscape Character Area	7 - Main cities and towns
Location	22A Parkfield Road, Torbay, Torquay, Devon, England, TQ1 4AN
Other designations	None



© 2023 Microsoft Corporation © 2023 Maxar © CNES (2023) Distribution Airbus DS.

Local Green Space Analysis

Proximity to the community	The space is detached / removed from the community / settlement. There is poor connectivity between the community and space, with limited visual or physical link.
Scenic quality designation	The space is not within a designated landscape.
Landscape condition	The landscape elements and overall structure within the space are in a moderate physical state.
Scenic value	The space contains a few distinctive and diverse features. There are no memorable / key views and landmarks associated with the space.
Tranquillity	The space provides limited / no opportunity for quiet reflection.
Local in character	The space is self-contained.

Changes since designation

The space appears to have private access only.

TLGSTU5 - Stantaway Hill & Allotments

Devon Landscape Character Area	None
Torbay Landscape Character Area	7 - Main cities and towns
Location	Stantaway Hill, Torbay, Torquay, Devon, England, TQ1 4ER
Other designations	ULPA (C5.17 Stantaway Hill, Upton)



Local Green Space Analysis

Proximity to the community	The space has a degree of proximity to the community / settlement. The community has some physical or visual relationship with the space, which forms a secondary node / link.
Scenic quality designation	The space is within a locally designated ULPA.
Landscape condition	The landscape elements are overall structure within the space are in a moderate physical state
Scenic value	The space contains a few distinctive and diverse features. There are limited memorable / key views and landmarks associated with the space.
Tranquillity	The space provides ample opportunity for quiet reflection.
Local in character	The space is self-contained.

Changes since designation

No substantial change.

TLGSTU6 - Torre Churchyard

Devon Landscape Character Area	None
Torbay Landscape Character Area	7 - Main cities and towns
Location	2 St Efride's Road, Torbay, Torquay, Devon, England, TQ2 5SG
Other designations	None



Local Green Space Analysis

Proximity to the community	The space is in immediate proximity to the community / settlement. The community has direct physical and visual connection with the space, which forms an essential node / focal point.
Scenic quality designation	The space is not within a designated landscape
Landscape condition	The landscape elements and overall structure within the space are in a good physical state.
Scenic value	The space contains distinctive and diverse features. There are memorable / key views and landmarks associated with the space.
Tranquillity	The space provides ample opportunity for quiet reflection.
Local in character	The space is self-contained.

Changes since designation

No substantial change.

TLGSTU6 - Upton Park

Devon Landscape Character Area	None
Torbay Landscape Character Area	7 - Main cities and towns
Location	Lymington Road, Torbay, Torquay, Devon, England, TQ1 4BG
Other designations	None



Local Green Space Analysis

Proximity to the community	The space is in immediate proximity to the community / settlement. The community has direct physical and visual connection with the space, which forms an essential node / focal point.
Scenic quality designation	The space is not within a designated landscape.
Landscape condition	The landscape elements and overall structure within the space are in a good physical state.
Scenic value	The space contains a few distinctive and diverse features. There are limited memorable / key views and landmarks associated with the space.
Tranquillity	The space provides ample opportunity for quiet reflection.
Local in character	The space is self-contained.

Changes since designation

No substantial change.

TLGSW1 - Daddyhole Plain

Devon Landscape Character Area	None
Torbay Landscape Character Area	4H - Cliffs
Location	9-9 Daddyhole Road, Torbay, Torquay, Devon, England, TQ1 2ED
Other designations	ULPA (C5.26 Daddyhole Plain)



Local Green Space Analysis

Proximity to the community	The space is in immediate proximity to the community / settlement. The community has direct physical and visual connection with the space, which forms an essential node / focal point.
Scenic quality designation	The space is within a locally designated ULPA.
Landscape condition	The landscape elements and overall structure within the space are in a moderate physical state.
Scenic value	The space does not contain distinctive and diverse features. There are memorable / key views and landmarks associated with the space.
Tranquillity	The space provides ample opportunity for quiet reflection.
Local in character	The space is predominantly self-contained.

Changes since designation

No substantial change.

TLGSW2 - Ilsham Valley (Meadfoot Green)

Devon Landscape Character Area	None
Torbay Landscape Character Area	7A - Wooded valleys
Location	Ilsham Road, Torbay, Torquay, Devon, England, TQ1 2HY
Other designations	ULPA (C5.24 Ilsham Valley/Lincombe Slopes)



Local Green Space Analysis

Proximity to the community	The space is in immediate proximity to the community / settlement. The community has direct physical and visual connection with the space, which forms an essential node / focal point.
Scenic quality designation	The space is within a locally designated ULPA.
Landscape condition	The landscape elements and overall structure within the space are in a good physical state.
Scenic value	The space contains a few distinctive and diverse features. There are memorable / key views and landmarks associated with the space.
Tranquillity	The space provides ample opportunity for quiet reflection.
Local in character	The space is predominantly self-contained.

Changes since designation

No substantial change.

TLGSW3 -Lincombe Woods

Devon Landscape Character Area	None
Torbay Landscape Character Area	7A - Wooded valleys
Location	Ilsham Road, Torbay, Torquay, Devon, England, TQ1 2HY
Other designations	ULPA (C5.24 Ilsham Valley/Lincombe Slopes)



Local Green Space Analysis

Proximity to the community	The space has a degree of proximity to the community / settlement. The community has some physical or visual relationship with the space, which forms a secondary node / link for the community.
Scenic quality designation	The space is within a locally designated ULPA.
Landscape condition	The landscape elements and overall structure within the space are in a moderate physical state.
Scenic value	The space contains a few distinctive and diverse features. There are limited memorable / key views and landmarks associated with the space.
Tranquillity	The space provides ample opportunity for quiet reflection.
Local in character	The space is predominantly self-contained.

Changes since designation

No substantial change.

TLGSW4 - Manor Gardens

Devon Landscape Character Area	None
Torbay Landscape Character Area	4H - Cliffs
Location	Lincombe Drive, Torquay, Devon, England, TQ1 2HQ
Other designations	ULPA (C5.24 Ilsham Valley/Lincombe Slopes)



Local Green Space Analysis

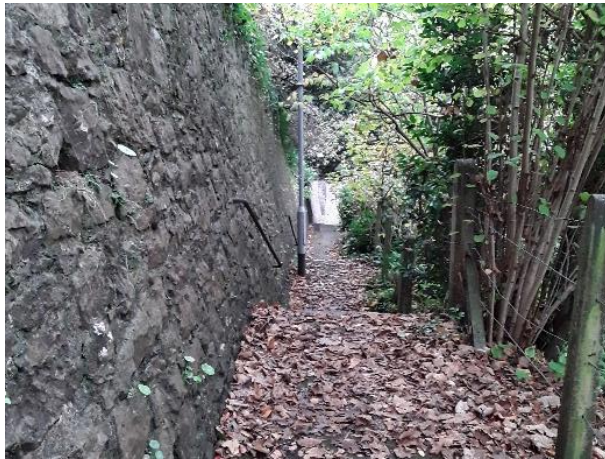
Proximity to the community	The space has a degree of proximity to the community / settlement. The community has some physical or visual relationship with the space, which forms a secondary node / link for the community.
Scenic quality designation	The space is within a locally designated ULPA.
Landscape condition	The landscape elements and overall structure within the space are in a moderate physical state.
Scenic value	The space contains a few distinctive and diverse features. There are limited memorable / key views and landmarks associated with the space.
Tranquillity	The space provides ample opportunity for quiet reflection.
Local in character	The space is predominantly self-contained.

Changes since designation

No substantial change.

TLGSW5 - St John's Wood

Devon Landscape Character Area	Breccia Hills and Coast
Torbay Landscape Character Area	7 - Main cities and towns
Location	Parkhill Road/Vane's Hill Road, Torquay TQ1 2BZ
Other designations	None



Local Green Space Analysis

Proximity to the community	The space has a degree of proximity to the community / settlement. The community has some physical or visual relationship with the space, which forms a link for the community.
Scenic quality designation	The space is not within a designated landscape.
Landscape condition	The landscape elements and overall structure within the space are in a moderate physical state.
Scenic value	The space contains distinctive and diverse features. There are memorable / key views and landmarks associated with the space.
Tranquillity	The space provides some opportunity for quiet reflection.
Local in character	The space is predominantly self-contained.

Changes since designation

No substantial change.

TLGSW6 - Stoodley Knowle Meadow

Devon Landscape Character Area

Breccia Hills and Coast

Torbay Landscape Character Area

4D - Coastal Slopes and Combes

Location

Anstey's Cove Road, Torbay, Torquay, Devon, England, TQ1 2JE

Other designations

ULPA (C5.23 Anstey's playing field)



Local Green Space Analysis

Proximity to the community	The space has a degree of proximity to the community / settlement. The community has some physical or visual relationship with the space, which forms a secondary node / link for the community.
Scenic quality designation	The space is within a locally designated ULPA.
Landscape condition	The landscape elements and overall structure within the space are in a good physical state.
Scenic value	The space contains a few distinctive and diverse features. There are limited memorable / key views and landmarks associated with the space.
Tranquillity	The space provides ample opportunity for quiet reflection.
Local in character	The space is predominantly self-contained.

Changes since designation

No substantial change.

TLGSW7 - Thatcher Pines & Thatcher Point

Devon Landscape Character Area	None
Torbay Landscape Character Area	4D - Coastal Slopes and Combes
Location	Ilsham Marine Drive, Torquay TQ1 2HT
Other designations	Undeveloped Coast (C2)



Local Green Space Analysis

Proximity to the community	The space has a degree of proximity to the community / settlement. The community has some physical or visual relationship with the space, which forms a secondary node / link for the community.
Scenic quality designation	The space is within the locally designated Undeveloped Coast.
Landscape condition	The landscape elements and overall structure within the space are in a good physical state.
Scenic value	The space contains distinctive and diverse features. There are memorable / key views and landmarks associated with the space.
Tranquillity	The space provides ample opportunity for quiet reflection.
Local in character	The space is predominantly self-contained.

Changes since designation

No substantial change.

TLGSW8 - Torwood Gardens

Devon Landscape Character Area	None
Torbay Landscape Character Area	7 - Main cities and towns
Location	Babbacombe Road, Torquay, TQ1 1HH
Other designations	ULPA (C5.25 Torwood Gardens)



Local Green Space Analysis

Proximity to the community	The space is in immediate proximity to the community / settlement. The community has direct physical and / or visual connection with the space, which forms an essential node / focal point for the community.
Scenic quality designation	The space is within a locally designated ULPA.
Landscape condition	The landscape elements and overall structure within the space are in a good physical state.
Scenic value	The space contains distinctive and diverse features. There are memorable / key views and landmarks associated with the space.
Tranquillity	The space provides ample opportunity for quiet reflection.
Local in character	The space is predominantly self-contained.

Changes since designation

No substantial change.

TLGSW9 - Wellswood Green

Devon Landscape Character Area	None
Torbay Landscape Character Area	7 - Main cities and towns
Location	Babbacombe Road, Torbay, Torquay, Devon, England, TQ1 2QG
Other designations	None



Local Green Space Analysis

Proximity to the community	The space is in immediate proximity to the community / settlement. The community has direct physical and / or visual connection with the space, which forms an essential node / focal point for the community.
Scenic quality designation	The space is not within a designated landscape.
Landscape condition	The landscape elements are overall structure within the space are in a moderate physical state.
Scenic value	The space contains a few distinctive and diverse features. There are limited memorable/key views and landmarks associated with the space.
Tranquillity	The space provides some opportunity for quiet reflection.
Local in character	The space is self-contained.

Changes since designation

No substantial change.

5 PAIGNTON LGS

PLGS.01 - Paignton Green North, Central and South

Devon Landscape Character Area	None
Torbay Landscape Character Area	4G - Low lying coast and beach
Location	Esplanade Road, Paignton TQ4 6BE
Other designations	ULPA (C5.35 Paignton Green North & C5.36 Paignton Green South)



Local Green Space Analysis

Proximity to the community	The space is in immediate proximity to the community / settlement. The community has direct physical and / or visual connection with the space, which forms an essential node / focal point for the community.
Scenic quality designation	The space is within a locally designated ULPA.
Landscape condition	The landscape elements and overall structure within the space are in a moderate physical state.
Scenic value	The space contains distinctive and diverse features. There are memorable/key views and landmarks associated with the space.
Tranquillity	The space provides some opportunity for quiet reflection.
Local in character	The space is self-contained.

Changes since designation

No substantial change.

PLGS.02 - Victoria Park, Torquay Road

Devon Landscape Character Area	None
Torbay Landscape Character Area	7 - Main cities and towns
Location	24-26 Polsham Park, Torbay, Paignton, Devon, England, TQ3 2BB
Other designations	ULPA (C5.38 Victoria Park)



Local Green Space Analysis

Proximity to the community	The space is in immediate proximity to the community / settlement. The community has direct physical and / or visual connection with the space, which forms an essential node / focal point for the community.
Scenic quality designation	The space is within a locally designated ULPA.
Landscape condition	The landscape elements and overall structure within the space are in a moderate physical state.
Scenic value	The space contains a few distinctive and diverse features. There are limited memorable/key views and landmarks associated with the space.
Tranquillity	The space provides some opportunity for quiet reflection.
Local in character	The space is self-contained.

Changes since designation

No substantial change.

PLGS.03 - Torbay Park and Gardens, Esplanade Road

Devon Landscape Character Area	None
Torbay Landscape Character Area	7 - Main cities and towns
Location	12 Adelphi Road, Torbay, Paignton, Devon, England, TQ4 6AW
Other designations	ULPA (C5.37 Queens Park)



Local Green Space Analysis

Proximity to the community	The space is in immediate proximity to the community / settlement. The community has direct physical and / or visual connection with the space, which forms an essential node / focal point for the community.
Scenic quality designation	The space is within a locally designated ULPA.
Landscape condition	The landscape elements and overall structure within the space are in a good physical state.
Scenic value	The space contains a few distinctive and diverse features. There are limited memorable/key views and landmarks associated with the space.
Tranquillity	The space provides some opportunity for quiet reflection.
Local in character	The space is self-contained.

Changes since designation

No substantial change.

PLGS.04 - Berry Square, off Kernou Road

Devon Landscape Character Area	None
Torbay Landscape Character Area	7 - Main cities and town
Location	Berry Square, Paignton TQ4 6AZ
Other designations	None



Local Green Space Analysis

Proximity to the community	The space is in immediate proximity to the community / settlement. The community has direct physical and visual connection with the space, which forms an essential focal point for the community.
Scenic quality designation	The space is not within a designated landscape.
Landscape condition	The landscape elements are overall structure within the space are in a poor physical state.
Scenic value	The space does not contain distinctive and diverse features. There are no memorable/key views and landmarks associated with the space.
Tranquillity	The space provides limited opportunity for quiet reflection.
Local in character	The space is self-contained.

Changes since designation

No substantial change.

PLGS.05 - Queens Park (Rugby and Cricket Ground)

Devon Landscape Character Area	None
Torbay Landscape Character Area	7 - Main cities and towns
Location	Queen's Park Road, Torbay, Paignton, Devon, England, TQ4 6AT
Other designations	ULPA (C5.37 Queen's Park)



Local Green Space Analysis

Proximity to the community	The space is in immediate proximity to the community / settlement. The community has direct physical connection with the space, which forms an essential node / focal point for the community.
Scenic quality designation	The space is within a locally designated ULPA.
Landscape condition	The landscape elements and overall structure within the space are in a moderate physical state.
Scenic value	The space does not contain distinctive and diverse features. There are no memorable/key views and landmarks associated with the space.
Tranquillity	The space provides limited opportunity for quiet reflection.
Local in character	The space is self-contained.

Changes since designation

No substantial change.

PLGS.06 - Palace Avenue Gardens

Devon Landscape Character Area	None
Torbay Landscape Character Area	7 - Main cities and towns
Location	Palace Avenue, Paignton TQ3 3EQ
Other designations	None



Local Green Space Analysis

Proximity to the community	The space is in immediate proximity to the community / settlement. The community has direct physical and / or visual connection with the space, which forms an essential node / focal point for the community.
Scenic quality designation	The space is not within a designated landscape.
Landscape condition	The landscape elements and overall structure within the space are in a good physical state.
Scenic value	The space contains a few distinctive and diverse features. There are limited memorable/key views and landmarks associated with the space.
Tranquillity	The space provides some opportunity for quiet reflection.
Local in character	The space is self-contained.

Changes since designation

No substantial change.

PLGS.07 - Burma Star Garden, Cliff Road

Devon Landscape Character Area	None
Torbay Landscape Character Area	7 - Main cities and towns
Location	26 Cliff Road, Torbay, Paignton, Devon, England, TQ4 6DH
Other designations	ULPA (C5.42 Goodrington Park /Roundham)



Local Green Space Analysis

Proximity to the community	The space has a degree of proximity to the community / settlement. The community has some physical or visual relationship with the space, which forms a secondary node / link for the community.
Scenic quality designation	The space is within a locally designated ULPA.
Landscape condition	The landscape elements and overall structure within the space are in a good physical state.
Scenic value	The space contains distinctive and diverse features. There are memorable/key views and landmarks associated with the space.
Tranquillity	The space provides ample opportunity for quiet reflection.
Local in character	The space is self-contained.

Changes since designation

No substantial change.

PLGS.08 - Whitstone Corner

Devon Landscape Character Area	None
Torbay Landscape Character Area	7 - Main cities and towns
Location	4 Whitstone Road, Torbay, Paignton, Devon, England, TQ4 6EY
Other designations	None



Local Green Space Analysis

Proximity to the community	The space has a degree of proximity to the community / settlement. The community has some physical or visual relationship with the space, which forms a secondary node / link for the community.
Scenic quality designation	The space is not within a designated landscape.
Landscape condition	The landscape elements and overall structure within the space are in a moderate physical state.
Scenic value	The space does not contain distinctive and diverse features. There are no memorable / key views and landmarks associated with the space.
Tranquillity	The space provides limited opportunity for quiet reflection.
Local in character	The space is self-contained.

Changes since designation

No substantial change.

PLGS.09 - Roundham Head Park

Devon Landscape Character Area	None
Torbay Landscape Character Area	4H - Cliffs
Location	Roundham Gardens, Torbay, Paignton, Devon, England, TQ4 6DD
Other designations	ULPA (C5.42 Goodrington Park /Roundham)



Local Green Space Analysis

Proximity to the community	The space has a degree of proximity to the community / settlement. The community has some physical relationship with the space, which forms a secondary node / link for the community.
Scenic quality designation	The space is within a locally designated ULPA.
Landscape condition	The landscape elements and overall structure within the space are in a good physical state.
Scenic value	The space contains distinctive and diverse features. There are memorable/key views and landmarks associated with the space
Tranquillity	The space provides ample opportunity for quiet reflection.
Local in character	The space is predominantly self-contained.

Changes since designation

No substantial change.

PLGS.10 - St Michaels Field, Derrell Road

Devon Landscape Character Area	None
Torbay Landscape Character Area	7 - Main cities and towns
Location	93 Saint Michael's Road, Torbay, Paignton, Devon, England, TQ4 5NA
Other designations	None



Local Green Space Analysis

Proximity to the community	The space is in immediate proximity to the community / settlement. The community has direct physical and / or visual connection with the space, which forms part of an essential node / focal point for the community.
Scenic quality designation	The space is not within a designated landscape.
Landscape condition	The landscape elements and overall structure within the space are in a good physical state.
Scenic value	The space does not contain distinctive and diverse features. There are no memorable/key views and landmarks associated with the space.
Tranquillity	The space provides some opportunity for quiet reflection.
Local in character	The space is self-contained.

Changes since designation

No substantial change.

PLGS.11 - Oakleigh St Michaels Allotments

Devon Landscape Character Area	None
Torbay Landscape Character Area	7 - Main cities and towns
Location	4-11 Batson Gardens, Torbay, Paignton, Devon, England, TQ4 5LT
Other designations	None



© 2023 Microsoft Corporation © 2023 Maxar ©CNES (2023) Distribution Airbus DS.

Local Green Space Analysis

Proximity to the community	The space is in immediate proximity to the community / settlement. The community has direct physical and / or visual connection with the space, which forms part of an essential node / focal point for the community.
Scenic quality designation	The space is not within a designated landscape.
Landscape condition	The landscape elements and overall structure within the space are in a moderate physical state.
Scenic value	The space does not contain distinctive and diverse features. There are no memorable/key views and landmarks associated with the space.
Tranquillity	The space provides some opportunity for quiet reflection.
Local in character	The space is self-contained.

Changes since designation

No substantial change.

PLGS.12 - Derrell Road Allotments

Devon Landscape Character Area	None
Torbay Landscape Character Area	7 - Main cities and towns
Location	Derrell Road, Torbay, Paignton, Devon, England, TQ4 5PA
Other designations	None



Local Green Space Analysis

Proximity to the community	The space is in immediate proximity to the community / settlement. The community has direct physical and / or visual connection with the space, which forms part of an essential node / focal point for the community.
Scenic quality designation	The space is not within a designated landscape.
Landscape condition	The landscape elements and overall structure within the space are in a moderate physical state.
Scenic value	The space does not contain distinctive and diverse features. There are no memorable/key views and landmarks associated with the space.
Tranquillity	The space provides some opportunity for quiet reflection.
Local in character	The space is self-contained.

Changes since designation

No substantial change.

PLGS.13 - Preston Green, Marine Drive

Devon Landscape Character Area	None
Torbay Landscape Character Area	4G - Low lying coast and beach
Location	Marine Drive, Paignton TQ3 2NS
Other designations	ULPA (C5.33 Preston Green)



© 2023 Microsoft Corporation © 2023 Maxar ©CNES (2023) Distribution Airbus DS.

Local Green Space Analysis

Proximity to the community	The space is in immediate proximity to the community / settlement. The community has direct physical and / or visual connection with the space, which forms an essential node / focal point for the community.
Scenic quality designation	The space is within a locally designated ULPA.
Landscape condition	The landscape elements and overall structure within the space are in a moderate physical state.
Scenic value	The space contains a few distinctive and diverse features. There are limited memorable/key views and landmarks associated with the space.
Tranquillity	The space provides some opportunity for quiet reflection.
Local in character	The space is self-contained.

Changes since designation

No substantial change.

PLGS.14 - Parkfield

Devon Landscape Character Area	None
Torbay Landscape Character Area	4G - Low lying coast and beach
Location	Esplanade Road, Torbay, Paignton, Devon, England, TQ3 2NH
Other designations	ULPA (C5.34 Parkfield)



Local Green Space Analysis

Proximity to the community	The space is in immediate proximity to the community / settlement. The community has direct physical and / or visual connection with the space, which forms an essential node / focal point for the community.
Scenic quality designation	The space is within a locally designated ULPA.
Landscape condition	The landscape elements and overall structure within the space are in a moderate physical state.
Scenic value	The space contains a few distinctive and diverse features. There are limited memorable/key views and landmarks associated with the space.
Tranquillity	The space provides some opportunity for quiet reflection.
Local in character	The space is self-contained.

Changes since designation

No substantial change.

PLGS.15 - Coombe Valley Park, South West of Coombe Road

Devon Landscape Character Area	None
Torbay Landscape Character Area	7 - Main cities and towns
Location	Coombe Road, Torbay, Paignton, Devon, England, TQ3 2QP
Other designations	None



Local Green Space Analysis

Proximity to the community	The space is in immediate proximity to the community / settlement. The community has direct physical and / or visual connection with the space, which forms an essential node / focal point for the community.
Scenic quality designation	The space is not within a designated landscape.
Landscape condition	The landscape elements and overall structure within the space are in a good physical state.
Scenic value	The space does not contain distinctive and diverse features. There are no memorable/key views and landmarks associated with the space.
Tranquillity	The space provides some opportunity for quiet reflection.
Local in character	The space is self-contained.

Changes since designation

Removal of a large tree on the northern boundary.

PLGS.16 - Hollicombe Cliff Park, east of Torquay Road

Devon Landscape Character Area	None
Torbay Landscape Character Area	4G - Low lying coast and beach
Location	21-37 Bay View, Torbay, Paignton, Devon, England, TQ3 2DL
Other designations	None



Local Green Space Analysis

Proximity to the community	The space has a degree of proximity to the community / settlement. The community has some physical or visual relationship with the space, which forms a secondary node / link for the community.
Scenic quality designation	The space is not within a designated landscape.
Landscape condition	The landscape elements and overall structure within the space are in a good physical state.
Scenic value	The space contains distinctive and diverse features. There are memorable/key views and landmarks associated with the space.
Tranquillity	The space provides ample opportunity for quiet reflection.
Local in character	The space is predominantly self-contained.

Changes since designation

No substantial change.

PLGS.17 - Hollicombe Park (part of)

Devon Landscape Character Area	None
Torbay Landscape Character Area	4G - Low lying coast and beach
Location	Torbay Road, Torbay, Paignton, Devon, England, TQ3 2DW
Other designations	None



© 2023 Microsoft Corporation © 2023 Maxar © CNES (2023) Distribution Airbus DS.

Local Green Space Analysis

Proximity to the community	The space has a degree of proximity to the community / settlement. The community has some physical relationship with the space, which forms a secondary node / link for the community.
Scenic quality designation	The space is not within a designated landscape.
Landscape condition	The landscape elements and overall structure within the space are in a moderate physical state.
Scenic value	The space does not contain distinctive and diverse features. There are no memorable/key views and landmarks associated with the space.
Tranquillity	The space provides ample opportunity for quiet reflection.
Local in character	The space is predominantly self-contained.

Changes since designation

No substantial change.

PLGS.18 - Wills Avenue Playground

Devon Landscape Character Area	None
Torbay Landscape Character Area	7 - Main cities and towns
Location	22 Wills Avenue, Torbay, Paignton, Devon, England, TQ3 2RG
Other designations	None



Local Green Space Analysis

Proximity to the community	The space is in immediate proximity to the community / settlement. The community has direct physical and / or visual connection with the space, which forms an essential node / focal point for the community.
Scenic quality designation	The space is not within a designated landscape.
Landscape condition	The landscape elements and overall structure within the space are in a moderate physical state.
Scenic value	The space contains a few distinctive and diverse features. There are limited memorable/key views and landmarks associated with the space.
Tranquillity	The space provides some opportunity for quiet reflection.
Local in character	The space is self-contained.

Changes since designation

No substantial change.

PLGS.19 - Preston Gardens, Torquay Road

Devon Landscape Character Area	None
Torbay Landscape Character Area	7 - Main cities and towns
Location	61 Old Torquay Road, Torbay, Paignton, Devon, England, TQ3 2RA
Other designations	None



Local Green Space Analysis

Proximity to the community	The space is in immediate proximity to the community / settlement. The community has direct physical and visual connection with the space, which forms an essential node / focal point for the community.
Scenic quality designation	The space is not within a designated landscape.
Landscape condition	The landscape elements and overall structure within the space are in a good physical state.
Scenic value	The space contains distinctive and diverse features. There are memorable/key views and landmarks associated with the space.
Tranquillity	The space provides ample opportunity for quiet reflection.
Local in character	The space is self-contained.

Changes since designation

No substantial change.

PLGS.20 - Oldway Mansion and Gardens

Devon Landscape Character Area	None
Torbay Landscape Character Area	7 - Main cities and towns
Location	Oldway Mansion, Torquay Road, Paignton TQ3 2TY
Other designations	None



Local Green Space Analysis

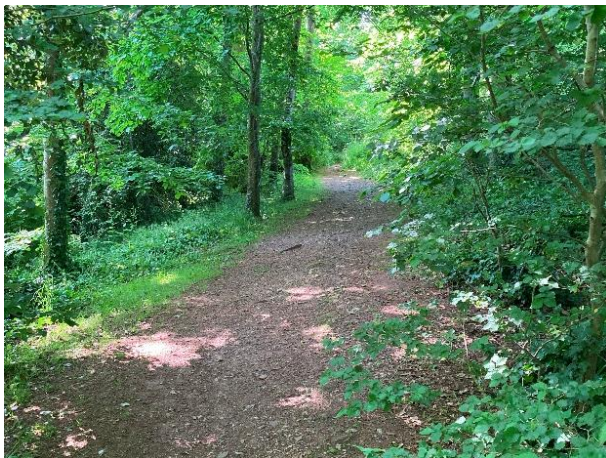
Proximity to the community	The space is in immediate proximity to the community / settlement. The community has direct physical and / or visual connection with the space, which forms an essential node / focal point for the community.
Scenic quality designation	The space is not within a designated landscape.
Landscape condition	The landscape elements and overall structure within the space are in a good physical state.
Scenic value	The space contains distinctive and diverse features. There are memorable/key views and landmarks associated with the space.
Tranquillity	The space provides ample opportunity for quiet reflection.
Local in character	The space is self-contained.

Changes since designation

Withdrawal of stewardship of the gardens by Torbay Council in 2019, which are now largely maintained by volunteers. Mansion out of use since 2013, on Heritage-At-Risk register and undergoing restoration.

PLGS.21 - Shorton Valley Woods

Devon Landscape Character Area	None
Torbay Landscape Character Area	7 - Main cities and towns
Location	28 Graham Road, Preston, Torbay, Paignton, Devon, England, TQ3 1BB
Other designations	None



Local Green Space Analysis

Proximity to the community	The space has a degree of proximity to the community / settlement. The community has some physical and visual relationship with the space, which forms a secondary node / link for the community.
Scenic quality designation	The space is not within a designated landscape.
Landscape condition	The landscape elements and overall structure within the space are in a moderate physical state.
Scenic value	The space does not contain distinctive and diverse features. There are no memorable/key views and landmarks associated with the space.
Tranquillity	The space provides some opportunity for quiet reflection.
Local in character	The space is predominantly self-contained.

Changes since designation

No substantial change.

PLGS.22 - Hollicombe Allotments

Devon Landscape Character Area	None
Torbay Landscape Character Area	3H - Secluded valleys
Location	Torbay Road, Torbay, Paignton, Devon, England, TQ3 2DS
Other designations	None



Local Green Space Analysis

Proximity to the community	The space has a degree of proximity to the community / settlement. The community has some physical relationship with the space, which forms a secondary node / link for the community.
Scenic quality designation	The space is not within a designated landscape.
Landscape condition	The landscape elements and overall structure within the space are in a moderate physical state.
Scenic value	The space does not contain distinctive and diverse features. There are no memorable/key views and landmarks associated with the space.
Tranquillity	The space provides some opportunity for quiet reflection.
Local in character	The space is self-contained.

Changes since designation

No substantial change.

PLGS.23 - Sandringham Gardens, Preston

Devon Landscape Character Area	Torbay Hinterland
Torbay Landscape Character Area	7A - Wooded valleys
Location	9-23 Sandringham Gardens, Preston, Torbay, Paignton, Devon, England, TQ3 1JA
Other designations	None



Local Green Space Analysis

Proximity to the community	The space has a degree of proximity to the community / settlement. The community has some physical and visual relationship with the space, which forms a secondary node / link for the community.
Scenic quality designation	The space is not within a designated landscape.
Landscape condition	The landscape elements and overall structure within the space are in a moderate physical state.
Scenic value	The space contains distinctive and diverse features. There are memorable/key views and landmarks associated with the space.
Tranquillity	The space provides ample opportunity for quiet reflection.
Local in character	The space is predominantly self-contained.

Changes since designation

No substantial change.

PLGS.24 - Lower Penns Road Allotments

Devon Landscape Character Area	Torbay Hinterland
Torbay Landscape Character Area	7A - Wooded valleys
Location	6-6 Lower Penns Road, Preston, Torbay, Paignton, Devon, England, TQ3 1JE
Other designations	None



Local Green Space Analysis

Proximity to the community	The space has a degree of proximity to the community / settlement. The community has some physical relationship with the space, which forms a secondary node / link for the community.
Scenic quality designation	The space is not within a designated landscape.
Landscape condition	The landscape elements and overall structure within the space are in a moderate physical state.
Scenic value	The space does not contain distinctive and diverse features. There are no memorable/key views and landmarks associated with the space.
Tranquillity	The space provides some opportunity for quiet reflection.
Local in character	The space is predominantly self-contained.

Changes since designation

No substantial change.

PLGS.25 - Scadson Woods, Duchy Drive

Devon Landscape Character Area	Torbay Hinterland
Torbay Landscape Character Area	3H - Secluded valleys
Location	2-31 Duchy Gardens, Preston, Torbay, Paignton, Devon, England, TQ3 1EP
Other designations	None



Local Green Space Analysis

Proximity to the community	The space has a degree of proximity to the community / settlement. The community has some physical or visual relationship with the space, which forms a secondary node / link for the community.
Scenic quality designation	The space is not within a designated landscape.
Landscape condition	The landscape elements and overall structure within the space are in a moderate physical state.
Scenic value	The space does not contain distinctive and diverse features. There are no memorable/key views and landmarks associated with the space.
Tranquillity	The space provides ample opportunity for quiet reflection.
Local in character	The space is part of the open countryside.

Changes since designation

No substantial change.

PLGS.26 - Stanley Gardens

Devon Landscape Character Area	Torbay Hinterland
Torbay Landscape Character Area	7 - Main cities and towns
Location	Marldon Road, Paignton, TQ3 2JT
Other designations	ULPA (C5.39 Paignton Cemetery & Allotments)



Local Green Space Analysis

Proximity to the community	The space is in immediate proximity to the community / settlement. The community has direct physical and visual connection with the space, which forms part of an essential node / focal point for the community.
Scenic quality designation	The space is within a locally designated ULPA.
Landscape condition	The landscape elements and overall structure within the space are in a moderate physical state.
Scenic value	The space does not contain distinctive and diverse features. There are memorable/key views and landmarks associated with the space.
Tranquillity	The space provides some opportunity for quiet reflection.
Local in character	The space is self-contained.

Changes since designation

No substantial change.

PLGS.27 - Ailescombe Road Allotments

Devon Landscape Character Area	None
Torbay Landscape Character Area	7 - Main cities and towns
Location	7-43 Stanley Gardens, Torbay, Paignton, Devon, England, TQ3 3NX
Other designations	ULPA (C5.39 Paignton Cemetery & Allotments)



Local Green Space Analysis

Proximity to the community	The space is in immediate proximity to the community / settlement. The community has direct physical and visual connection with the space, which forms part of an essential node / focal point for the community.
Scenic quality designation	The space is within a locally designated ULPA.
Landscape condition	The landscape elements and overall structure within the space are in a good physical state.
Scenic value	The space contains a few distinctive and diverse features. There are limited memorable/key views and landmarks associated with the space.
Tranquillity	The space provides some opportunity for quiet reflection.
Local in character	The space is predominantly self-contained.

Changes since designation

No substantial change.

PLGS.28 - Monastery, Winner Hill

Devon Landscape Character Area	None
Torbay Landscape Character Area	7 - Main cities and towns
Location	Monastery Woods, Berry Drive, Paignton TQ3 3QJ
Other designations	ULPA (C5.40 Monastery, Winner Hill)



© 2023 Microsoft Corporation © 2023 Maxar ©CNES (2023) Distribution Airbus DS.

Local Green Space Analysis

Proximity to the community	The space has a degree of proximity to the community / settlement. The community has some physical and visual relationship with the space, which forms a secondary node / link for the community.
Scenic quality designation	The space is within a locally designated ULPA.
Landscape condition	The landscape elements and overall structure within the space are in a moderate physical state.
Scenic value	The space contains distinctive and diverse features. There are memorable / key views and landmarks associated with the space.
Tranquillity	The space provides some opportunity for quiet reflection.
Local in character	The space is self-contained.

Changes since designation

No substantial change.

PLGS.29 - Paignton Cemetery

Devon Landscape Character Area	None
Torbay Landscape Character Area	7 - Main cities and towns
Location	Ailescombe Road, Torbay, Paignton, Devon, England, TQ3 3RB
Other designations	ULPA (C5.39 Paignton Cemetery & Allotments)



Local Green Space Analysis

Proximity to the community	The space is in immediate proximity to the community / settlement. The community has direct physical and visual connection with the space, which forms part of an essential node / focal point for the community.
Scenic quality designation	The space is within a locally designated ULPA.
Landscape condition	The landscape elements and overall structure within the space are in a good physical state.
Scenic value	The space contains a few distinctive and diverse features. There are limited memorable/key views and landmarks associated with the space.
Tranquillity	The space provides ample opportunity for quiet reflection.
Local in character	The space is self-contained.

Changes since designation

No substantial change.

PLGS.30 - Clennon Valley Allotments

Devon Landscape Character Area	None
Torbay Landscape Character Area	4G - Low lying coast and beach
Location	Dartmouth Road, Torbay, Paignton, Devon, England, TQ4 6NX
Other designations	None



© 2023 Microsoft Corporation © 2023 Maxar ©CNES (2023) Distribution Airbus DS.

Local Green Space Analysis

Proximity to the community	The space has a degree of proximity to the community / settlement. The community has some physical relationship with the space, which forms a secondary node / link for the community.
Scenic quality designation	The space is not within a designated landscape.
Landscape condition	The landscape elements and overall structure within the space are in a moderate physical state.
Scenic value	The space does not contain distinctive and diverse features. There are no memorable/key views and landmarks associated with the space.
Tranquillity	The space provides some opportunity for quiet reflection.
Local in character	The space is predominantly self-contained.

Changes since designation

No substantial change.

PLGS.31 - Quay West Corner, Brixham Road

Devon Landscape Character Area	None
Torbay Landscape Character Area	7 - Main cities and towns
Location	Tanners Road, Torquay, Paignton, Devon, England, TQ4 6LN
Other designations	ULPA (C5.43 Quay West Corner)



Local Green Space Analysis

Proximity to the community	The space is detached from the community / settlement. There is poor connectivity between the community and space, with limited visual or physical link.
Scenic quality designation	The space is within a locally designated ULPA.
Landscape condition	The landscape elements and overall structure within the space are in a poor physical state.
Scenic value	The space does not contain distinctive and diverse features. There are no memorable/key views and landmarks associated with the space.
Tranquillity	The space provides limited opportunity for quiet reflection.
Local in character	The space is self-contained.

Changes since designation

Increased growth of scrub in meadow area.

PLGS.32 - Young's Park

Devon Landscape Character Area	None
Torbay Landscape Character Area	4G - Low lying coast and beach
Location	Young's Park Road, Torbay, Paignton, Devon, England, TQ4 6BU
Other designations	ULPA (C5.42 Goodrington Park/Roundham)



Local Green Space Analysis

Proximity to the community	The space has a degree of proximity to the community / settlement. The community has some physical and visual relationship with the space, which forms a secondary node / link for the community.
Scenic quality designation	The space is within a locally designated ULPA.
Landscape condition	The landscape elements and overall structure within the space are in a good physical state.
Scenic value	The space contains a few distinctive and diverse features. There are limited memorable/key views and landmarks associated with the space.
Tranquillity	The space provides ample opportunity for quiet reflection.
Local in character	The space is predominantly self-contained.

Changes since designation

No substantial change.

PLGS.33 - Oyster Bend Field

Devon Landscape Character Area	None
Torbay Landscape Character Area	4H - Cliffs
Location	Oyster Bend, Paignton TQ4 6NL
Other designations	Undeveloped Coast (C2)



#

Local Green Space Analysis

Proximity to the community	The space has a degree of proximity to the community / settlement. The community has some physical and visual relationship with the space, which forms a secondary node / link for the community.
Scenic quality designation	The space is within the locally designated Undeveloped Coast.
Landscape condition	The landscape elements and overall structure within the space are in a good physical state,
Scenic value	The space contains distinctive and diverse features. There are memorable / key views and landmarks associated with the space.
Tranquillity	The space provides ample opportunity for quiet reflection.
Local in character	The space is part of the open countryside.

Changes since designation

No substantial change.

PLGS.34 - Goodrington Community Orchard

Devon Landscape Character Area	None
Torbay Landscape Character Area	7 - Main cities and towns
Location	3 Grange Road, Torbay, Paignton, Devon, England, TQ4 7JT
Other designations	None



Local Green Space Analysis

Proximity to the community	The space is in immediate proximity to the community / settlement. The community has direct physical and visual connection with the space, which forms part of an essential node / focal point for the community.
Scenic quality designation	The space is not within a designated landscape.
Landscape condition	The landscape elements and overall structure within the space are in a good physical state.
Scenic value	The space contains a few distinctive and diverse features. There are limited memorable/key views and landmarks associated with the space.
Tranquillity	The space provides some opportunity for quiet reflection.
Local in character	The space is self-contained.

Changes since designation

Growth of orchard trees.

PLGS.35 - Goodrington Village Green

Devon Landscape Character Area	None
Torbay Landscape Character Area	7 - Main cities and towns
Location	14 Crystal Close, Torbay, Paignton, Devon, England, TQ4 7LF
Other designations	None



Local Green Space Analysis

Proximity to the community	The space is in immediate proximity to the community / settlement. The community has direct physical connection with the space, which forms part of an essential node / focal point for the community.
Scenic quality designation	The space is not within a designated landscape.
Landscape condition	The landscape elements and overall structure within the space are in a good physical state.
Scenic value	The space contains a few distinctive and diverse features. There are limited memorable/key views and landmarks associated with the space.
Tranquillity	The space provides ample opportunity for quiet reflection.
Local in character	The space is self-contained.

Changes since designation

No substantial change.

PLGS.36 - Claylands Cross Park

Devon Landscape Character Area	None
Torbay Landscape Character Area	7 - Main cities and towns
Location	1-31 Harbourne Avenue, Torbay, Paignton, Devon, England, TQ4 7DU
Other designations	None



Local Green Space Analysis

Proximity to the community	The space has a degree of proximity to the community / settlement. The community has some physical relationship with the space, which forms a secondary node / link for the community.
Scenic quality designation	The space is not within a designated landscape.
Landscape condition	The landscape elements and overall structure within the space are in a moderate physical state.
Scenic value	The space does not contain distinctive and diverse features. There are no memorable/key views and landmarks associated with the space.
Tranquillity	The space provides limited opportunity for quiet reflection.
Local in character	The space is self-contained.

Changes since designation

Development immediately north and loss of hedgerow and scrub to the north and west of the LGS.

PLGS.37 - Gibson Road Playground

Devon Landscape Character Area	None
Torbay Landscape Character Area	7 - Main cities and towns
Location	Gibson Road, Torbay, Paignton, Devon, England, TQ4 7AQ
Other designations	None



Local Green Space Analysis

Proximity to the community	The space is in immediate proximity to the community / settlement. The community has direct physical and visual connection with the space, which forms an essential node / focal point for the community.
Scenic quality designation	The space is not within a designated landscape.
Landscape condition	The landscape elements and overall structure within the space are in a good physical state.
Scenic value	The space does not contain distinctive and diverse features. There are no memorable/key views and landmarks associated with the space.
Tranquillity	The space provides limited opportunity for quiet reflection.
Local in character	The space is self-contained.

Changes since designation

No substantial change.

PLGS.38 - White Rock Recreation Ground

Devon Landscape Character Area	None
Torbay Landscape Character Area	7 - Main cities and towns
Location	67 Kingsway Avenue, Torbay, Paignton, Devon, England, TQ4 7AB
Other designations	None



Local Green Space Analysis

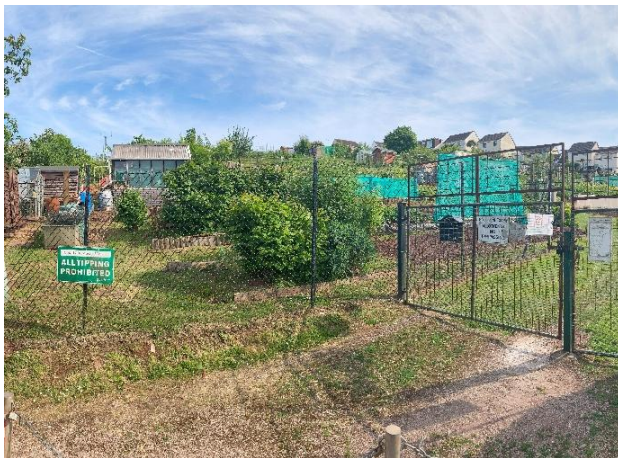
Proximity to the community	The space is in immediate proximity to the community / settlement. The community has direct physical connection with the space, which forms an essential node / focal point for the community.
Scenic quality designation	The space is not within a designated landscape.
Landscape condition	The landscape elements and overall structure within the space are in a moderate physical state.
Scenic value	The space does not contain distinctive and diverse features. There are no memorable/key views and landmarks associated with the space.
Tranquillity	The space provides some opportunity for quiet reflection.
Local in character	The space is predominantly self-contained.

Changes since designation

No substantial change.

PLGS.39 - York Road Allotments

Devon Landscape Character Area	None
Torbay Landscape Character Area	7 - Main cities and towns
Location	61 Elsdale Road, Torbay, Paignton, Devon, England, TQ4 5NX
Other designations	None



Local Green Space Analysis

Proximity to the community	The space is in immediate proximity to the community / settlement. The community has direct physical and visual connection with the space, which forms an essential node / focal point for the community.
Scenic quality designation	The space is not within a designated landscape.
Landscape condition	The landscape elements and overall structure within the space are in a moderate physical state.
Scenic value	The space does not contain distinctive and diverse features. There are no memorable/key views and landmarks associated with the space.
Tranquillity	The space provides some opportunity for quiet reflection.
Local in character	The space is self-contained.

Changes since designation

No substantial change.

PLGS.40 - Hookhills Playground and Park

Devon Landscape Character Area	None
Torbay Landscape Character Area	7 - Main cities and towns
Location	Hookhills Community Centre Park, Freshwater Drive, Paignton TQ4 7SB
Other designations	None



Local Green Space Analysis

Proximity to the community	The space is in immediate proximity to the community / settlement. The community has direct physical and visual connection with the space, which forms an essential node / focal point for the community.
Scenic quality designation	The space is not within a designated landscape.
Landscape condition	The landscape elements and overall structure within the space are in a moderate physical state.
Scenic value	The space does not contain distinctive and diverse features. There are no memorable/key views and landmarks associated with the space.
Tranquillity	The space provides some opportunity for quiet reflection.
Local in character	The space is self-contained.

Changes since designation

No substantial change.

PLGS.41 - Lancaster Drive Play Park

Devon Landscape Character Area	None
Torbay Landscape Character Area	7 - Main cities and towns
Location	65 Lancaster Drive, Torbay, Paignton, Devon, England, TQ4 7RP
Other designations	None



Local Green Space Analysis

Proximity to the community	The space is in immediate proximity to the community / settlement. The community has direct physical visual connection with the space, which forms an essential node / focal point for the community.
Scenic quality designation	The space is not within a designated landscape.
Landscape condition	The landscape elements and overall structure within the space are in a poor physical state.
Scenic value	The space does not contain distinctive and diverse features. There are no memorable/key views and landmarks associated with the space.
Tranquillity	The space provides some opportunity for quiet reflection.
Local in character	The space is predominantly self-contained.

Changes since designation

Reduction in condition.

PLGS.42 - Cherry Brook Square

Devon Landscape Character Area	None
Torbay Landscape Character Area	7 - Main cities and towns
Location	Hookhills Road, Paignton, TQ4 7SH
Other designations	None



Local Green Space Analysis

Proximity to the community	The space is in immediate proximity to the community / settlement. The community has direct physical and visual connection with the space, which forms an essential node / focal point for the community.
Scenic quality designation	The space is not within a designated landscape.
Landscape condition	The landscape elements and overall structure within the space are in a good physical state.
Scenic value	The space does not contain distinctive and diverse features. There are no memorable/key views and landmarks associated with the space.
Tranquillity	The space provides some opportunity for quiet reflections.
Local in character	The space is self-contained.

Changes since designation

No substantial change.

PLGS.43 - Goodrington Road

Devon Landscape Character Area	None
Torbay Landscape Character Area	7 - Main cities and towns
Location	Hookhills Road, Torbay, Paignton, Devon, England, TQ4 7JX
Other designations	None



Local Green Space Analysis

Proximity to the community	The space is in immediate proximity to the community / settlement. The community has direct physical and visual connection with the space, which forms part of an essential node / focal point for the community.
Scenic quality designation	The space is not within a designated landscape.
Landscape condition	The landscape elements and overall structure within the space are in a good physical state.
Scenic value	The space does not contain distinctive and diverse features. There are no memorable/key views and landmarks associated with the space.
Tranquillity	The space provides limited opportunity for quiet reflection.
Local in character	The space is predominantly self-contained.

Changes since designation

No substantial change.

PLGS.44 - Primley Park

Devon Landscape Character Area	None
Torbay Landscape Character Area	7 - Main cities and towns
Location	2-52 Waterleat Close, Torbay, Paignton, Devon, England, TQ3 3UN
Other designations	ULPA (C5.41Primley Woods & meadow to south)



Local Green Space Analysis

Proximity to the community	The space has a degree of proximity to the community / settlement. The community has some physical relationship with the space, which forms a secondary node / link for the community.
Scenic quality designation	The space is within a locally designated ULPA.
Landscape condition	The landscape elements and overall landscape structure within the space are in a moderate physical state.
Scenic value	The space contains a few distinctive and diverse features. There are limited memorable/key views and landmarks associated with the space.
Tranquillity	The space provides ample opportunity for quiet reflection.
Local in character	The space is predominantly self-contained.

Changes since designation
No substantial change.

PLGS.45 - Redwell Road

Devon Landscape Character Area	None
Torbay Landscape Character Area	7 - Main cities and towns
Location	2 Langridge Road, Torbay, Paignton, Devon, England, TQ3 3PT
Other designations	None



Local Green Space Analysis

Proximity to the community	The space is in immediate proximity to the community / settlement. The community has direct physical and visual connection with the space, which forms an essential node / focal point for the community.
Scenic quality designation	The space is not within a designated landscape.
Landscape condition	The landscape elements and overall structure within the space are in a moderate physical state
Scenic value	The space does not contain distinctive and diverse features. There are no memorable/key views and landmarks associated with the space.
Tranquillity	The space provides some opportunity for quiet reflection.
Local in character	The space is self-contained.

Changes since designation

No substantial change.

PLGS.46 - Smallcombe Scout Field

Devon Landscape Character Area	None
Torbay Landscape Character Area	7 - Main cities and towns
Location	8 Smallcombe Road, Torbay, Paignton, Devon, England, TQ3 3SW
Other designations	None



Local Green Space Analysis

Proximity to the community	The space has a degree of proximity to the community / settlement. The community has some visual relationship with the space, which forms a secondary node for the community.
Scenic quality designation	The space is not within a designated landscape
Landscape condition	The landscape elements and overall structure within the space are in a moderate physical state.
Scenic value	The space does not contain distinctive and diverse features. There are no memorable/key views and landmarks associated with the space.
Tranquillity	The space provides limited opportunity for quiet reflection.
Local in character	The space is self-contained.

Changes since designation

No substantial change.

PLGS.47 - Smallcombe Road Playground and Park

Devon Landscape Character Area	None
Torbay Landscape Character Area	7 - Main cities and towns
Location	20 Jasmine Grove, Torbay, Paignton, Devon, England, TQ3 3TH
Other designations	None



Local Green Space Analysis

Proximity to the community	The space is in immediate proximity to the community / settlement. The community has direct physical and visual connection with the space, which forms an essential node / focal point for the community.
Scenic quality designation	The space is not within a designated landscape.
Landscape condition	The landscape elements and overall structure within the space are in a moderate physical state.
Scenic value	The space contains a few distinctive and diverse features. There are limited memorable/key views and landmarks associated with the space.
Tranquillity	The space provides some opportunity for quiet reflection.
Local in character	The space is self-contained.

Changes since designation

No substantial change.

PLGS.48 - Wild Fox Adventure Playground

Devon Landscape Character Area	None
Torbay Landscape Character Area	7 - Main cities and towns
Location	37 Smallcombe Road, Torbay, Paignton, Devon, England, TQ3 3SP
Other designations	None



© 2023 Microsoft Corporation © 2023 Maxar ©CNES (2023) Distribution Airbus DS.

Local Green Space Analysis

Proximity to the community	The space is in immediate proximity to the community / settlement. The community has direct physical connection with the space, which forms an essential node / focal point for the community.
Scenic quality designation	The space is not within a designated landscape.
Landscape condition	The landscape elements and overall structure within the space are in a moderate physical state.
Scenic value	The space does not contain distinctive and diverse features. There are no memorable/key views and landmarks associated with the space.
Tranquillity	The space provides some opportunity for quiet reflection.
Local in character	The space is self-contained.

Changes since designation

No substantial change.

PLGS.49 - Foxhole Community Field

Devon Landscape Character Area	None
Torbay Landscape Character Area	7 - Main cities and towns
Location	2-8 Pimm Road, Torbay, Paignton, Devon, England, TQ3 3XA
Other designations	None



Local Green Space Analysis

Proximity to the community	The space is in immediate proximity to the community / settlement. The community has direct physical and visual connection with the space, which forms an essential node / focal point for the community.
Scenic quality designation	The space is not within a designated landscape.
Landscape condition	The landscape elements and overall structure within the space are in a moderate physical state.
Scenic value	The space does not contain distinctive and diverse features. There are no memorable/key views and landmarks associated with the space.
Tranquillity	The space provides limited opportunity for quiet reflection.
Local in character	The space is predominantly self-contained.

Changes since designation

No substantial change.

PLGS.50 - Great Parks Play Area

Devon Landscape Character Area	None
Torbay Landscape Character Area	3A - Upper farmed and wooded valley slopes
Location	Greatpark Lane, Torbay, Paignton, Devon, England, TQ3 3YL
Other designations	None



Local Green Space Analysis

Proximity to the community	The space has a degree of proximity to the community / settlement. The community has some physical relationship with the space, which forms a secondary node / link for the community.
Scenic quality designation	The space is not within a designated landscape.
Landscape condition	The landscape elements and overall landscape structure within the space are in a moderate physical state.
Scenic value	The space does not contain distinctive and diverse features. There are no memorable / key views and landmarks associated with the space.
Tranquillity	The space provides ample opportunity for quiet reflection.
Local in character	The space is predominantly self-contained.

Changes since designation

Removal of play equipment.

PLGS.51 - Snowdonia Close

Devon Landscape Character Area	None
Torbay Landscape Character Area	7 - Main cities and towns
Location	25 Pennine Drive, Torbay, Paignton, Devon, England, TQ4 7GB
Other designations	None



Local Green Space Analysis

Proximity to the community	The space has a degree of proximity to the community / settlement. The community has some physical relationship with the space, which forms a secondary node / link for the community.
Scenic quality designation	The space is not within a designated landscape.
Landscape condition	The landscape elements and overall structure within the space are in a moderate physical state.
Scenic value	The space does not contain distinctive and diverse features. There are no memorable / key views and landmarks associated with the space.
Tranquillity	The space provides some opportunity for quiet reflection.
Local in character	The space is predominantly self-contained.

Changes since designation

No substantial change.

PLGS.52 - Pennine Drive Amenity Area

Devon Landscape Character Area	None
Torbay Landscape Character Area	7 - Main cities and towns
Location	John Paul 2nd Park, 33 Pennine Dr, Paignton TQ4 7GB
Other designations	None



Local Green Space Analysis

Proximity to the community	The space is in immediate proximity to the community / settlement. The community has direct physical and visual connection with the space, which forms an essential node / focal point for the community.
Scenic quality designation	The space is not within a designated landscape.
Landscape condition	The landscape elements and overall structure within the space are in a good physical state.
Scenic value	The space does not contain distinctive and diverse features. There are no memorable/key views and landmarks associated with the space.
Tranquillity	The space provides some opportunity for quiet reflection.
Local in character	The space is self-contained.

Changes since designation

No substantial change.

PLGS.53 - Collaton St. Mary Meadow

Devon Landscape Character Area	None
Torbay Landscape Character Area	7 - Main cities and towns
Location	Stoke Road, TQ4 7DB
Other designations	None



Local Green Space Analysis

Proximity to the community	The space is in immediate proximity to the community / settlement. The community has direct physical and visual connection with the space, which forms an essential node / focal point for the community.
Scenic quality designation	The space is not within a designated landscape.
Landscape condition	The landscape elements and overall structure within the space are in a moderate physical state.
Scenic value	The space contains a few distinctive and diverse features. There are limited memorable / key views and landmarks associated with the space.
Tranquillity	The space provides ample opportunity for quiet reflection.
Local in character	The space is self-contained.

Changes since designation

No substantial change.

6 BRIXHAM LGS

E4 - 01 - Ash Hole Woods

Devon Landscape Character Area	Froward Point to Berry Head Coastal Plateau
Torbay Landscape Character Area	1B - Open coastal plateaux
Location	123-127 Berry Head Road, Berry Head, Brixham, Devon, England, TQ5 9AH
Other designations	ULPA (C5.51 Shoalstone and Ashhole Woods)



Local Green Space Analysis

Proximity to the community	The space is detached / removed from the community / settlement. There is poor connectivity between the community and space, with limited visual or physical links.
Scenic quality designation	The space is within a locally designated ULPA.
Landscape condition	The landscape elements and overall structure within the space are in a moderate physical state.
Scenic value	The space contains a few distinctive and diverse features. There are limited memorable/key views and landmarks associated with the space.
Tranquillity	The space provides some opportunity for quiet reflection.
Local in character	The space is predominantly self-contained.

Changes since designation

No substantial change.

E4 - 02 - Astley Park

Devon Landscape Character Area	None
Torbay Landscape Character Area	7 - Main cities and towns
Location	1-4 New Park Close, Brixham, Devon, England, TQ5 9EF
Other designations	ULPA (C5.55 Astley Park & Playing Fields)



Local Green Space Analysis

Proximity to the community	The space is in immediate proximity to the community / settlement. The community has direct physical and / or visual connection with the space, which might form an essential node / focal point for the community.
Scenic quality designation	The space is within a locally designated ULPA.
Landscape condition	The landscape elements and overall structure within the space are in a good physical state.
Scenic value	The space does not contain distinctive and diverse features. There are no memorable/key views and landmarks associated with the space.
Tranquillity	The space provides some opportunity for quiet reflection.
Local in character	The space is predominantly self-contained.

Changes since designation

No substantial change.

E4 - 03 - Battery Gardens

Devon Landscape Character Area	None
Torbay Landscape Character Area	4H - Cliffs
Location	Fishcombe Rd, Brixham TQ5 8RU
Other designations	ULPA (C5.50 Battery Grounds)



Local Green Space Analysis

Proximity to the community	The space has a degree of proximity to the community / settlement. The community has some physical relationship with the space, which forms a secondary node / link for the community.
Scenic quality designation	The space is within a locally designated ULPA.
Landscape condition	The landscape elements and overall structure within the space are in a good physical state.
Scenic value	The space contains distinctive and diverse features. There are memorable/key views and landmarks associated with the space.
Tranquillity	The space provides ample opportunity for quiet reflection.
Local in character	The space is predominantly self-contained

Changes since designation

No substantial change.

E4 - 04 - Berry Head

Devon Landscape Character Area

Froward Point to Berry Head Coastal Plateau

Torbay Landscape Character Area

1B - Open coastal plateaux

Location

Berry Head-Sharkham Point National Nature Reserve, Brixham TQ5 9AW

Other designations

South Devon National Landscape, Undeveloped Coast (C2)



Local Green Space Analysis

Proximity to the community	The space has a degree of proximity to the community / settlement. The community has some physical and visual relationship with the space.
Scenic quality designation	The space is wholly within the South Devon National Landscape and locally designated Undeveloped Coast.
Landscape condition	The landscape elements and overall structure within the space are in a good physical state.
Scenic value	The space contains distinctive and diverse features. There are memorable/key views and landmarks associated with the space.
Tranquillity	The space provides ample opportunity for quiet reflections.
Local in character	The space is part of the open countryside.

Changes since designation

No substantial change

E4 - 05 - Bonsey Rose Gardens

Devon Landscape Character Area	None
Torbay Landscape Character Area	4H - Cliffs
Location	North Furzeham Road, Brixham TQ5 8BA
Other designations	None



Local Green Space Analysis

Proximity to the community	The space is in immediate proximity to the community / settlement. The community has direct physical and visual connection with the space, which forms an essential node / focal point for the community.
Scenic quality designation	The space is not within a designated landscape.
Landscape condition	The landscape elements and overall structure within the space are in a good physical state.
Scenic value	The space contains distinctive and diverse features. There are memorable/key views and landmarks associated with the space.
Tranquillity	The space provides ample opportunity for quiet reflection.
Local in character	The space is self-contained.

Changes since designation

No substantial change.

E4 - 06 - Brixham Cricket Club

Devon Landscape Character Area

Froward Point to Berry Head Coastal Plateau

Torbay Landscape Character Area

3E - Lowland Plains

Location

North Boundary Road, Brixham TQ5 8LH

Other designations

South Devon National Landscape, Undeveloped Coast (C2)



#

Local Green Space Analysis

Proximity to the community	The space has a degree of proximity to the community / settlement. The community has some physical relationship with the space, which forms a secondary node / link for the community.
Scenic quality designation	The space is within the South Devon National Landscape.
Landscape condition	The landscape elements and overall structure within the space are in a good physical state.
Scenic value	The space does not contain distinctive and diverse features. There are no memorable/key views and landmarks associated with the space.
Tranquillity	The space provides some opportunity for quiet reflection.
Local in character	The space is predominantly self-contained.

Changes since designation

No substantial change.

E4 - 07 - Furzeham Greens

Devon Landscape Character Area	None
Torbay Landscape Character Area	7 - Main cities and towns
Location	North Furzeham Road, Brixham, Devon, England, TQ5 8BJ
Other designations	ULPA (C5.52 Furzeham Recreation Ground & Park)



Local Green Space Analysis

Proximity to the community	The space is in immediate proximity to the community / settlement. The community has direct physical and visual connection with the space, which forms an essential node / focal point for the community.
Scenic quality designation	The space is within a locally designated ULPA.
Landscape condition	The landscape elements and overall structure within the space are in a good physical state.
Scenic value	The space contains distinctive and diverse features. There are memorable/key views and landmarks associated with the space.
Tranquillity	The space provides ample opportunity for quiet reflection.
Local in character	The space is self-contained

Changes since designation

No substantial change.

E4 - 08 - Jubilee Gardens

Devon Landscape Character Area	None
Torbay Landscape Character Area	4H - Cliffs
Location	4-4 Berry Head Road, Brixham, Devon, England, TQ5 9AA
Other designations	None



Local Green Space Analysis

Proximity to the community	The space has a degree of proximity to the community / settlement. The community has some physical or visual relationship with the space, which forms a secondary node / link for the community.
Scenic quality designation	The space is not within a designated landscape
Landscape condition	The landscape elements and overall structure within the space are in a moderate physical state.
Scenic value	The space contains a few distinctive and diverse features. There are limited memorable/key views and landmarks associated with the space.
Tranquillity	The space provides some opportunity for quiet reflection.
Local in character	The space is self-contained.

Changes since designation

No substantial change.

E4 - 09 - Shoalstone

Devon Landscape Character Area	None
Torbay Landscape Character Area	7 - Main cities and towns
Location	Shoalstone Beach, Brixham, TQ5 9FT
Other designations	ULPA (C5.51 Shoalstone and Ashhole Woods)



Local Green Space Analysis

Proximity to the community	The space has a degree of proximity to the community / settlement. The community has some physical and visual relationship with the space, which forms a secondary node for the community.
Scenic quality designation	The space is within a locally designated ULPA.
Landscape condition	The landscape elements and overall landscape structure within the space are in a moderate physical state.
Scenic value	The space contains distinctive and diverse features. There are memorable / key views and landmarks associated with the space.
Tranquillity	The space provides some opportunity for quiet reflection.
Local in character	The space is predominantly self-contained.

Changes since designation

No substantial change.

E4 - 10 - St Mary's Churchyard

Devon Landscape Character Area	None
Torbay Landscape Character Area	7 - Main cities and towns
Location	Bakers Hill, Brixham, Devon, England, TQ5 0BT
Other designations	ULPA (C5.56 St. Mary's Churchyard & Park)



Local Green Space Analysis

Proximity to the community	The space is in immediate proximity to the community / settlement. The community has direct physical and visual connection with the space, which forms an essential node / focal point for the community.
Scenic quality designation	The space is within a locally designated ULPA.
Landscape condition	The landscape elements and overall structure within the space are in a good physical state.
Scenic value	The space contains distinctive and diverse features. There are memorable / key views and landmarks associated with the space.
Tranquillity	The space provides ample opportunity for quiet reflection.
Local in character	The space is self-contained.

Changes since designation

No substantial change.

E4 - 11 - St Mary's Park

Devon Landscape Character Area	None
Torbay Landscape Character Area	7 - Main cities and towns
Location	Bakers Hill, Brixham, Devon, England, TQ5 0BT
Other designations	ULPA (C5.56 St. Mary's Churchyard & Park)



Local Green Space Analysis

Proximity to the community	The space is in immediate proximity to the community / settlement. The community has direct physical and visual connection with the space, which forms an essential node / focal point for the community.
Scenic quality designation	The space is within a locally designated ULPA.
Landscape condition	The landscape elements and overall structure within the space are in a good physical state.
Scenic value	The space contains distinctive and diverse features. There are memorable / key views and landmarks associated with the space.
Tranquillity	The space provides ample opportunity for quiet reflection.
Local in character	The space is self-contained.

Changes since designation

No substantial change.

E4 - 12 - Stoney Park Allotments

Devon Landscape Character Area	None
Torbay Landscape Character Area	7 - Main cities and towns
Location	Northfields Lane, Brixham, Devon, England, TQ5 8BA
Other designations	None



Local Green Space Analysis

Proximity to the community	The space is in immediate proximity to the community / settlement. The community has direct physical and visual connection with the space, which forms an essential node / focal point for the community.
Scenic quality designation	The space is not within a designated landscape.
Landscape condition	The landscape elements and overall structure within the space are in a moderate physical state.
Scenic value	The space contains a few distinctive and diverse features. There are limited memorable/key views and landmarks associated with the space.
Tranquillity	The space provides some opportunity for quiet reflection.
Local in character	The space is self-contained.

Changes since designation

No substantial change.

7 CHURSTON, GALMPTON AND BROADSANDS LGS

E4 - 13 - Churston Golf Course

Devon Landscape Character Area	None
Torbay Landscape Character Area	7 - Main cities and towns
Location	Dartmouth Road, Torbay, Brixham, Devon, England, TQ5 0LA
Other designations	None



Local Green Space Analysis

Proximity to the community	The space has a degree of proximity to the community / settlement. The community has some physical and visual relationship with the space, which forms a secondary node / link for the community.
Scenic quality designation	The space is not within a designated landscape.
Landscape condition	The landscape elements and overall structure within the space are in a good physical state.
Scenic value	The space contains a few distinctive and diverse features. There are limited memorable/key views and landmarks associated with the space.
Tranquillity	The space provides some opportunity for quiet reflection.
Local in character	The space is predominantly self-contained.

Changes since designation

No substantial change.

E4 - 14 - Elberry Headland

Devon Landscape Character Area	Froward Point to Berry Head Coastal Plateau
Torbay Landscape Character Area	3B - Lower rolling farmed and settled valley slopes
Location	South West Coast Path, Paignton, Brixham TQ4 6HL
Other designations	South Devon National Landscape, Undeveloped Coast (C2)



Local Green Space Analysis

Proximity to the community	The space is detached / removed from the community / settlement. There is poor connectivity between the community and space, with limited visual or physical links.
Scenic quality designation	The space is within the South Devon National Landscape.
Landscape condition	The landscape elements and overall structure within the space are in a good physical state.
Scenic value	The space contains distinctive and diverse features. There are memorable/key views and landmarks associated with the space.
Tranquillity	The space provides ample opportunity for quiet reflection.
Local in character	The space is part of the open countryside.

Changes since designation

No substantial change.

E4 - 15 - Warborough Common

Devon Landscape Character Area	None
Torbay Landscape Character Area	7 - Main cities and towns
Location	1 Langdon Lane, Galmpton, Torbay, Brixham, Devon, England, TQ5 0PG
Other designations	ULPA (C5.48 Galmpton Warborough)



Local Green Space Analysis

Proximity to the community	The space is in immediate proximity to the community / settlement. The community has direct physical and visual connection with the space, which forms an essential node / focal point for the community.
Scenic quality designation	The space is within a locally designated ULPA.
Landscape condition	The landscape elements and overall structure within the space are in a moderate physical state.
Scenic value	The space contains a few distinctive and diverse features. There are limited memorable/key views and landmarks associated with the space.
Tranquillity	The space provides some opportunity for quiet reflection.
Local in character	The space is predominantly self-contained.

Changes since designation

No substantial change.

E4 - 16 - Sugar Loaf Hill

Devon Landscape Character Area	None
Torbay Landscape Character Area	4H - Cliffs
Location	South West Coast Path, Paignton TQ4 6NJ
Other designations	ULPA (C5.45 Sugar Loaf Hill)



Local Green Space Analysis

Proximity to the community	The space has a degree of proximity to the community / settlement. The community has some physical and visual relationship with the space, which forms a secondary node / link for the community.
Scenic quality designation	The space is within a locally designated ULPA.
Landscape condition	The landscape elements and overall structure within the space are in a moderate physical state.
Scenic value	The space contains distinctive and diverse features. There are memorable/key views and landmarks associated with the space.
Tranquillity	The space provides ample opportunity for quiet reflection.
Local in character	The space is predominantly self-contained.

Changes since designation

No substantial change.

APPENDIX 1 - SURVEY SHEET

Local Green Space - Field survey record sheet

LGS name LGS No

Appraised by Date Approved by Date

Neighbourhood Plan

Devon Landscape Character Type (LCT)

Landscape designations

What is the proximity of the LGS to the nearest community/settlement?

Image 1

Evaluation of the Local Green Space (LGS)

Is the LGS designated for scenic quality?

What is the condition of the landscape within the LGS?

What is the scenic value of the LGS?

Does the LGS provide a tranquil space?

Is the LGS local in character?

Changes since Designation

(identified from mapping) e.g:

New development / Land use change / Condition of the landscape/townscape / Other