

**Torbay Partnership  
Early Help Strategy  
2021 – 2025**

## Contents

---

Introduction .....	3
PART 1 - What is Early Help? .....	4
Why is Early Help Important? .....	5
Early Help – whose responsibility? .....	6
PART 2 – Our New Model for Delivering Early Help .....	8
What the Model Means in Practice .....	9
The Locality Networks .....	10
PART 3 - The Early Help Threshold and Early Help Assessment .....	12
The Early Help Assessment Process .....	14
PART 4 – Governance of Early Help .....	17
PART 5 – Early Help Outcomes Framework .....	17
PART 6 – Workforce Development .....	20
PART 7 – Early Help Timeline .....	21
PART 8 – Keeping Up to Date .....	22
APPENDIX 1 – Membership of The Locality Networks .....	23

## Introduction

---

From pre-pregnancy and throughout childhood, things can happen that affect a child's health, development, attainment and wellbeing which can, in turn, impact on their later life. We, as a partnership, are committed to minimising the impact of any disadvantage for Torbay children by working with families and communities as early as possible, enabling them to get the right support, in the right way, at the right time for them.

Our aim is to build a culture together where children, young people and families are engaged in conversations when things are not going well, or where there may be a risk of problems arising. We will work alongside those families in a relationship-centred way and will empower them to find and co-produce their own solutions to the challenges they face. These conversations can happen at any time, in any setting, and may involve one or a number of services and partners. The help that is offered will range from information and advice-giving, to direct work with families, finding solutions specific to their individual challenges. This will require strong commitment, a common purpose and common ways of working across the partnership and will make Torbay ***the best place for children and young people to grow up.***

This strategy is for children aged 0-25, their families and communities across Torbay, with the core aim of helping us all to work better together to ensure that 'children, young people and their families are safe, healthy and achieve their full potential'. The strategy is owned by the Early Help Board which is currently accountable to the Sufficiency Board and Children's Improvement Board. However, as will be seen in this strategy, there is a plan to merge the functions of the Board with those of the 0-19 Strategic Partnership and develop additional accountability to a multi agency Board, to ensure full multi agency ownership.

### NOTE:

*The original strategy was due to be fully revised in 2024. However, with the inception of new central Government policies such as Stable Homes Built on Love, Keeping Children Safe, Helping Families Thrive and the Families First Partnership Programme, the strategy will now be fully redrafted in the first quarter of 2026 to accommodate the new Family Help Model of operation. Therefore, there have been some minor amendments to the 2021/23 strategy to accommodate updates in guidance and legislation.*

## PART 1 - What is Early Help?

---

Early Help is not a specific service or team, it's an approach to working that brings together professionals from a range of different services who will work with the whole family to help improve things for everyone.

We believe that children and families need to be heard when they first ask for help, to minimise the risk of problems getting worse and help them address them at the earliest opportunity. Engaging a family in Early Help is also a voluntary process and consent from children, young people, and their families to work with them should always be sought. Without this, it is unlikely that they will engage in the support that we can offer them.

Early Help can be provided through a single agency or multi agency response as appropriate to the needs of the child and family and the concern.

Our principles for Early Help are based on the principles of the legislation as described in Working Together to Safeguard Children, 2018:

*Providing early help is more effective in promoting the welfare of children than reacting later. Early help means providing support as soon as a problem emerges, at any point in a child's life, from the foundation years through to the teenage years. Early help can also prevent further problems arising; for example, if it is provided as part of a support plan where a child has returned home to their family from care, or in families where there are emerging parental mental health issues or drug and alcohol misuse (Working Together to Safeguard Children, 2023).*

In practice, these include:

- Always working WITH the child, young person and family, not “doing to” or “doing for”
- Working in a relational and strengths-based way
- Considering the whole family as part of the analysis of need and the solutions to that need
- Identifying and addressing the problem at the earliest opportunity
- Early Help being “everyone’s business”, promoting accountability, evaluation, and sustainability across the partnership

*In delivering Early Help, we are very clear however that where there is a safeguarding concern, the Torbay Safeguarding Board's safeguarding procedures must be followed.*

## Why is Early Help Important?

The importance of Early Help is emphasised in a range of nationally recognised documents.

### **Realising the Potential of Early Intervention - Early Intervention Foundation 2018**

‘Acting early to support children at risk of poor outcomes can build healthier, happier and more productive communities, and produce a range of economic benefits that significantly outweigh the costs of intervening’.

Early intervention is not a panacea for all of society’s problems, nor is it a financial coping strategy for local or central government. It is a vital way of providing children with the skills and resilience they need to succeed in life, and of mitigating the negative impacts of poverty and other forms of disadvantage’.

### **The Munro Review of Child Protection: Final Report, a Child- Centred System: Eileen Munro**

‘Preventative services can do more to reduce abuse and neglect than reactive services. Many services and professions help children and families so co-ordinating their work is important to reduce inefficiencies.’

### **Fair Society, Healthy Lives: Michael Marmot 2010**

‘The foundations for virtually every aspect of human development – physical, intellectual and emotional – are laid in early childhood. What happens during those early years, starting in the womb, has lifelong effects on many aspects of health and wellbeing, from obesity, heart disease and mental health, to educational and economic achievement. Later interventions, although important, are considerably less effective if they have not had good early foundations.

### **‘We Should Have Been Helped from Day One’: A Unique Perspective from Children, Families and Practitioners. 2013 Findings from LARC5 by the National Foundation for Educational Research**

‘One of the key factors in ensuring families are supported in a timely and effective way, and do not enter a cycle of needing regular support (through the ‘revolving door’), is to offer more effective early intervention and preventative advice and support.

There is also a strong economic imperative for prevention and early help. Social problems and intergenerational disadvantage place a significant financial burden on society. Youth unemployment alone is estimated to cost the economy greater than £10million a day. Tackling the underlying causes of social problems, through prevention and early help, could realise significant saving for the public purse. Studies have shown that every £1 spent on prevention and early help can realise savings of up to £10+. Investing resources in this approach has the potential to combine improved outcomes with greater efficiency.

It is estimated that over two million children in the UK today are living in difficult family circumstances (Ofsted, 2015). Without early help, some families will experience further difficulties, where their needs escalate and family circumstances deteriorate, resulting in them requiring specialist and statutory support and increasing the likelihood that children suffer significant harm and longer-term poor outcomes.

## Early Help – whose responsibility?

*Local authorities, under section 10 of the Children Act 2004, have a responsibility to promote inter-agency co-operation to improve the welfare of all children.*

*Working Together to Safeguard Children, 2023*

Working Together (2023) recommends that local organisations and agencies should have in place effective ways to identify emerging problems and potential unmet needs of individual children and families

*'Local authorities should work with organisations and agencies to develop joined-up early help services based on a clear understanding of local needs. This requires all practitioners, including those in universal services and those providing services to adults with children, to understand their role in identifying emerging problems and to share information with other practitioners to support early identification and assessment'.*

Effective early help relies upon local organisations and agencies working together to:

- identify children and families who would benefit from early help
- undertake an assessment of the need for early help
- provide targeted early help services to address the assessed needs of a child and their family which focuses on activity to improve the outcomes for the child

Our new partnership model for delivering Early Help across Torbay requires an integrated, locality-based, partnership approach which is essential for delivering services that are focused on children and families, community resilience, prevention and early help. This is not just because integrated services are better able to change lives and realise greater efficiencies by working together, but because a shared strategic approach ensures that all partners remain focussed on the potential for prevention and early help to improve outcomes for everyone in the long term.

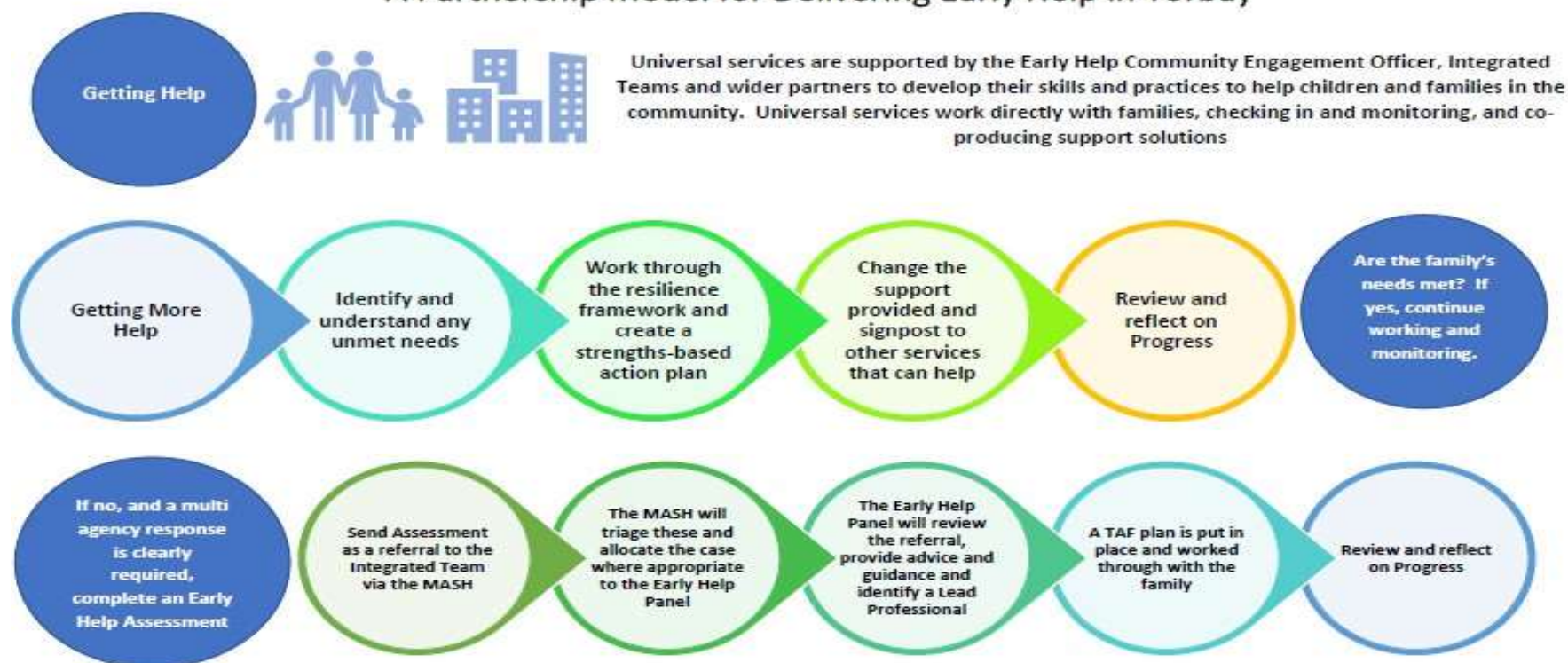
The Local Government Association (LGA March 2019) 'Review of Key Enablers of Developing an Effective Partnership-based early help offer', clearly defines the importance of acceptance that responsibility for early help is shared across all services that work with children, young people and their families must work together to deliver Early Help. It states:

*'An effective early help offer brings together local partners to provide early support for children and families that builds their resilience, prevents difficulties from escalating and leads to better outcomes that are sustained' (LGA, 2019).*

Our partnership arrangements and our new model of delivering early help services are designed so that they focus on families and are fit for purpose to enable us to deliver improved outcomes through clear, decisive leadership that is consistent yet flexible across the County, enabling partners and communities to build capacity and resilience to ensure that local needs are met in ways which are meaningful to families and communities.

## PART 2 – Our New Model for Delivering Early Help

### A Partnership Model for Delivering Early Help in Torbay



If you are unsure about whether an Early Help Assessment is needed, please contact the Early Help Community Engagement Officer for consultation and advice.

If you are worried about a child or young person's safety or welfare at any point, Torbay's safeguarding children procedures must be followed which you can find more information on [here](#). The Early Help Community Engagement Officer and Early Help Service Manager can advise you if you are uncertain about making a referral to the MASH.



## What the Model Means in Practice

- There are three Locality Teams / Networks, in Torquay, Paignton and Brixham respectively, which bring partners to together on a bimonthly basis to build relationships, skills and knowledge across partners, and be the focal point for gathering intelligence around local need and the voice of communities.
- These networks feed into the Early Help Board to ensure that the local intelligence and voice of the communities can influence decision making and the commissioning of services.
- Clear pathways that show what needs to happen at each stage of a family's journey within the system to help manage their needs at the earliest opportunity.
- The *function* of the CAF Mentor role has been re-introduced, following feedback from partners, as part of the Community Engagement Officer. This role is integral to supporting partners who are unsure whether they need to make a referral for multi agency support or who need some advice about whether there are any other services that they could connect to. In this sense, the role has a “social prescriber / community connector” type function which links community-based provision within the networks to the partner to support them in supporting the family.
- There is the intention to develop Early Help Hubs – at least one in each area – which promote ease of access to services via co-located delivery where appropriate. The one central and identifiable “hub” would be supported by other co-located venues called “spokes” – this recognises that there may be more than one place in a locality that lends itself to this model of working. What these venues must have in common is that they are seen as safe spaces for children, young people and their families, that they are accessible to them, and that they promote the concept of “no wrong door”. ***At the time of writing, we are engaging with communities to establish what these Hubs need to consider / where they need to be.***
- A new Early Help Assessment has been developed in partnership with partners, with training established on both this and the Lead Professional / Team around the Family roles
- As part of our approach to Early Help, we are keen to embed of the principles of Family Group Conferencing within Early Help.

## The Locality Networks

The new partnership model for delivering Early Help in Torbay is about the integration of key professionals and community-based organisations in three localities. Three Early Help Integrated Networks operate, one each in Torbay, Paignton and Brixham, brought together on a **bimonthly** basis to encourage integrated and collaborative working within their localities. Longer term chairing of these groups is to be agreed by these networks – there may be a different arrangement in each depending on local arrangements. An interim arrangement led by the independent organisation Peopletoo has been established for all 3 until these arrangements are agreed. The network meetings have a core standard agenda to ensure a degree of consistency, but will then have full jurisdiction to add agenda items relevant to the group.

The primary purpose of the networks is to:

- Build relationships, skills and knowledge between partners in a way that promotes the linkages with a wide variety of services that can help children, young people and their families
- Share good practice and “problem solve” where partners may need advice and support from their peers as to how to address challenging or emerging needs
- Hear the voice of communities, including children and young people, in terms of an up-to-date picture of needs, priorities or opportunities in the locality and evaluating how services should be delivered. It is envisaged that each locality will have either clear links with existing fora where they exist and may wish to additionally develop a small advisory group to feed into it
- Identify common needs and priorities in relation to service gaps to meet needs which can either be met through partners identifying joint solutions or which, if this is still insufficient to address the need, may require escalation to the Early Help Board and commissioners through the governance structure
- Receive feedback and engage with representatives from the Early Help Implementation Board in relation to strategic developments and any relevant information for wider discussion
- Share knowledge of funding streams or opportunities which would benefit individual partners or a collaborative approach to bidding
- Be able to invite guest speakers on particular topics of interest, including members of the groups to share knowledge of their work
- Receive relevant Intelligence Reports from the Local Authority

- Receive feedback around the usage of the hubs and identify any further opportunities through these
- Identify common Workforce Development needs and have access to opportunities through the Partnership Workforce Development Strategy

**Importantly, the networks have a key role in shaping the Partnership Early Help Model as it emerges. In a sense, the model has started with the Network Meetings and the Pathways as core functions, and then the other parts of the model can be developed iteratively in collaboration with partners. This is to make sure that partners feel that they can influence the detail of the model going forward.**

For consistency, the Early Help Team / Network meetings have core agendas, beyond which they will have the flexibility to discuss issues directly relevant to them.

The core agenda includes:

- 1) Welcome and introductions
- 2) Review of actions from previous meeting
- 3) Feedback from Early Help Implementation Board that is relevant to local services and communities
- 4) Focused discussion on an area of the early help offer and / or the Model if required
- 5) Updates from partners (for example any key developments)
- 6) Updates from the Torbay Promise (a pilot project in Lower Barton and Hele)
- 7) Feedback from Communities
- 8) Intelligence gathering of what is happening in communities /trend analysis/gap analysis and how we may address this
- 9) Training and workforce development opportunities
- 10) AOB
- 11) Planning next meeting

Periodic / optional agenda items include:

- Bay wide and locality data reports
- Guest speakers on particular topics of interest

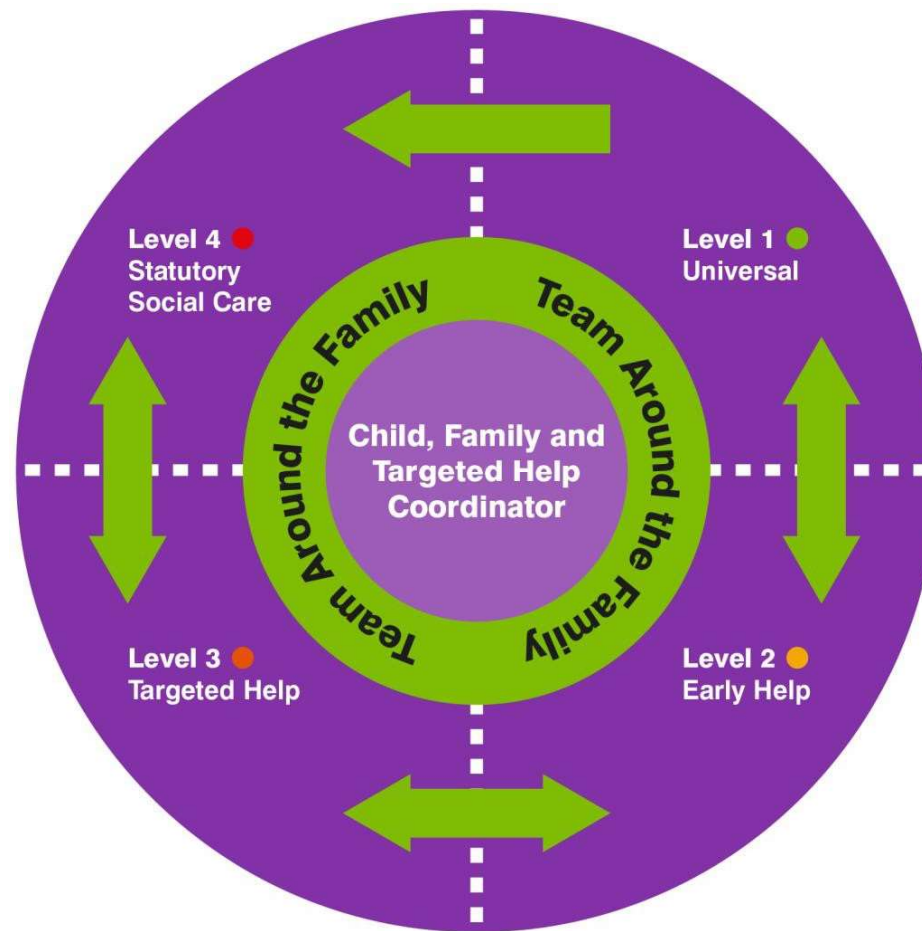
## PART 3 - The Early Help Threshold and Early Help Assessment

---

The Early Help Threshold Tool helps in identifying at what level a child, young person's or family's needs are at, to define the most appropriate response.

The Torbay Integrative Tool ([Interactive Threshold Tool: torbaysafeguarding.org.uk](https://torbaysafeguarding.org.uk)) provides clearly defined thresholds and a range of effective, evidence-based services in place to address assessed needs across the different levels.

Torbay's early help approach in line with [Working Together to Safeguard Children 2018 \(publishing.service.gov.uk\)](https://www.publishing.service.gov.uk) also includes proactive and planned support for children and families moving from statutory social work interventions or specialist care.



## Definitions of Levels

**Level 1:** Needs are being met through universal services. May have additional needs that can be met within existing services

**Level 2:** Has additional needs that can be met through partnership working led by existing services

**Level 3:** Has multiple needs that require an active and coordinated response involving multi-agency working

**Level 4:** Has a high level of unmet and complex needs that require statutory intervention or is in need

## The Early Help Assessment Process

Generally, if needs are defined as anything “level 2” or above in the threshold diagram, the approach to Early Help intervention can be defined in four simple steps:

### Step 1 – Identify and respond to needs early and seek consent

- The family or professional identify there is a need for Early Help support for a child, young person, or their family.
- The purpose of Early Help support is clearly explained to the child / family by a relevant professional or supporting agency.
- Written consent is gained from the child and family to complete an Early Help Assessment.

### Step 2 – Assess those Needs

- Undertake an Early Help Assessment in partnership with the child, their family and any other services involved **within 20 working days**, to identify the level of need and support required.
- If other partners need to be involved, you could do this via a TAF (Team Around the Family) meeting. This is where the identifying agency would identify who else is / should be involved in supporting the family, and record / gain contributions to the Early Help Assessment.
- The Early Help Assessment should enable partners to explore ‘unmet’ needs and concerns and explore strengths and resilience factors within the family that can be built upon.
- It should be clearly explained to the family at this point the benefit of sharing relevant information with other professionals, and agreement gained to do this.

- Where the identifying agency is unsure at this stage if a multi-agency response and hence a referral to the MASH is needed, they should seek advice from the Community Engagement Officer who will help them identify if there are any other sources of support available through the Locality Networks.
- If needs can be met with existing support to this point, move to Step 4.

### **Step 3 – Deliver multi agency services**

- The identifying agency may be able to meet the need in a relatively straight forward way through a simple, time bound intervention or access to a source of support.
- However, in other circumstances the Early Help Assessment may identify that a multi-agency response is needed.
- A lead agency is identified, and an initial Team around the Family (TAF) meeting is held **within 10 working days**. Where a lead agency is not identified this will be discussed at an Early Help panel for multi-agency consultation and allocation.
- Work with the family to develop a plan of support is undertaken by professionals.
- Agree Specific, Measurable, Agreed, Realistic, Timely (SMART) outcomes and record them on the action plan and agree a review date.

### **Step 4 – Review progress**

- The child and family's plan should be reviewed with the family **every 6 weeks**.
- At each stage, it should be considered if a plan is still required to achieve outcomes or if the family are able to sustain progress without ongoing intervention. The emphasis should be on progressing the family to build their confidence and skills to manage the need themselves to support their sustainability, resilience, and independence.
- Any revised plan should be agreed with the family, network and agencies, and consent updated as necessary
- If the Lead Practitioner role is appointed to another professional, the Early Help Service must be notified.

### **Step 5 – Needs met**

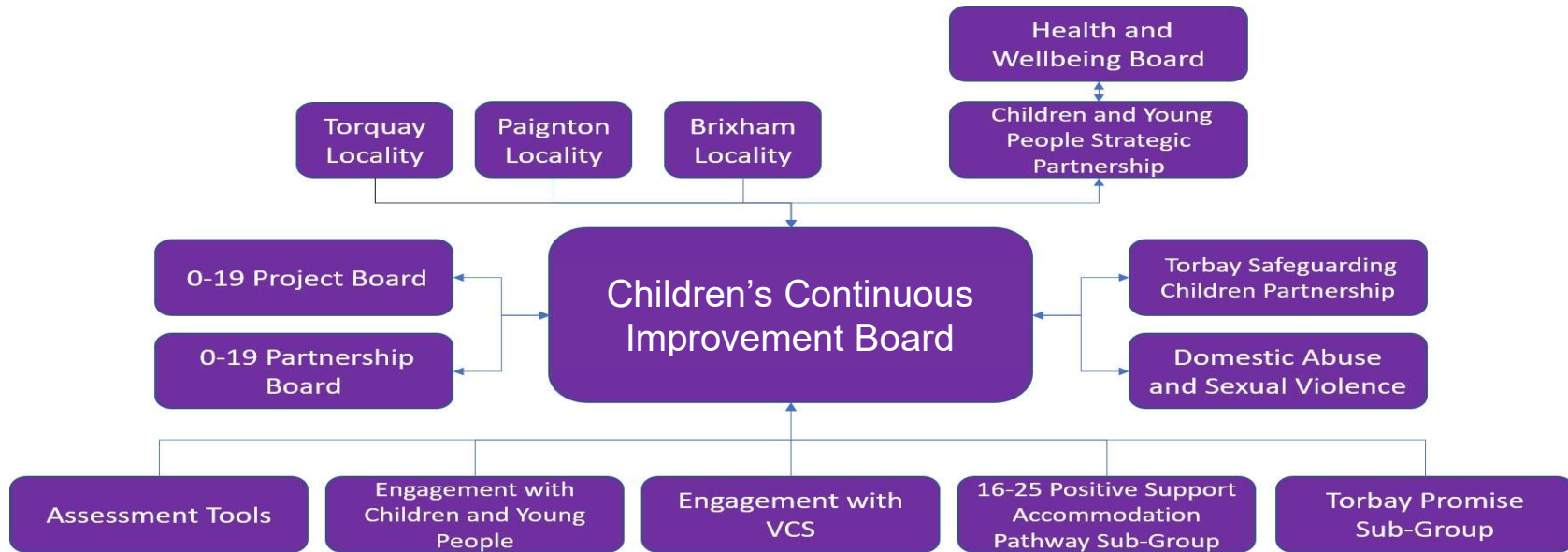
- If a plan is no longer required, a final TAF should be held, and the Early Help “episode” closed. A record of the “exit strategy”, including referral to universal services if required, should be recorded.

Training is available for all Early Help Practitioners the Early Help Assessment Process, incorporating the principles of Restorative Practice, Lead Professional role and Team Around the Family. Please contact the learning and development team at the Council for more information on [Learning&DevelopmentHub@torbay.gov.uk](mailto:Learning&DevelopmentHub@torbay.gov.uk)



## PART 4 – Governance of Early Help

The current governance structure for Early Help is shown below. However, please note that this will change as we integrate Early Help governance with that of the 0-19 Partnership. As this happens, we will update this Early Help Strategy to reflect this.



## PART 5 – Early Help Outcomes Framework

The Torbay Partnership Outcomes Framework for Early Help has been developed as part of the remodelling of Early Help undertaken with partners in Torbay in 2019. It aims to enable the partnership to monitor progress against some overarching outcomes

OUTCOMES FRAMEWORK – OVERARCHING OUTCOMES			
CYP Partnership Outcomes	Outcomes for Children and Young People	Outcomes for Parents and Carers	Outcomes for Communities
<b>Vulnerable children and young people are safe from harm and build resilience</b>	Children and young people feel safe, loved and well cared for, with their needs met at the right level	Parents and carers have greater resilience, improved confidence, self-awareness and capacity to recognise and respond to their own, and their children's, emerging needs	Communities have greater resilience and capacity to help each other when in need
	Children and young people are engaged in positive activity within their community	Parenting and caring is positive and builds the confidence and resilience of children and young people	Communities value children and young people and enable them to thrive in their community
<b>Children and young people fulfil their full potential in education, learning and future employment</b>	Children are school ready and able to achieve at school	Parents and carers value early education and actively support learning in the home	Communities value early learning and provide opportunities for this to occur
	Children have good school attendance, enjoy school and develop a love of learning	Parents and carers value education and provide a good role model for engagement in education, employment and training	Communities are thriving with opportunities for active engagement in activities which promote education and enrichment
	Children with SEND are supported with the right type of plan most appropriate to their needs	Parents and carers have confidence that their child's needs are supported, and are able to maintain their own resilience in supporting them	Communities are inclusive and supportive of children and young people with SEND

<b>Children and young people enjoy healthy lifestyles and know how to help others</b>	Babies are healthy and develop well	Parents and carers are prepared for parenthood	Communities identify how they can support new parents
	Young people make healthy lifestyle choices and are physically healthy	Parents and carers understand the context in which children and young people are growing up and are able to support their children and young people to make good choices	Communities identify where children, young people and families need support, and do so
	Children and young people are emotionally healthy	Parents and carers have good mental and emotional health and resilience and are able to support their children and young people to achieve likewise	Communities identify where children, young people and families need support, and do so
<b>Children, young people and their families have a voice in the support that they receive</b>	Children and young people feel listened to and heard	Parents and carers encourage and value children and young people's views and work with them to meet their needs	Communities can identify how the voice of children and young people is reflected in decisions made and the way that a community operates
<b>Children and young people live in Torbay where they can enjoy a good quality of life, be happy and want to stay</b>	Children and young people live in housing that is safe and fit for purpose	Parents and carers are able to maintain a safe and fit for purpose home for their children	Communities can identify where families need support to maintain a safe and fit for purpose home
	Children and young people live in households that are financially sustainable	Parents and carers are engaged in employment and / or are financially sustainable	Communities offer opportunities for income generation and can identify where families need support

## PART 6 – Workforce Development

---

The success of our strategy relies on a highly skilled and knowledgeable workforce that sincerely values the strengths of the family, that is committed to work with the family to co-produce solutions, to increase their capacity to manage challenging circumstances by providing them with the "tools" they need if similar circumstances arise again in the future.

We will support our multi-agency workforce by offering opportunities to strengthen their level of skills and knowledge and to shape behaviours in a way which improve partners' ability to work in an integrated way.

We are working with our partners to identify the key workforce development needs that they would like us to address, and this will form the Workforce Development Strategy.

The Workforce Development Strategy will be more than a training plan. Moreover, it articulates the approach to achieving a highly skilled workforce who share and live common values and who understand both their and others' contribution to the lives of children, young people and their families and how these interact. It is an important part of enabling us to deliver the Early Help Strategy.

The Workforce Development Strategy will focus on the following 5 key strategic objectives:

1. A shared identity, purpose and vision
2. Common Values and Language
3. Behaviours focused on Positive Outcomes for Children and Families
4. Integrated Workforce Practice
5. High quality, appropriately trained workforce

In the meantime, we offer two training courses which will induct partners on the Partnership Early Help Model and the Early Help Assessment Process, incorporating the principles of Restorative Practice, Lead Professional role and Team Around the Family. Please contact the learning and development team at the Council for more information on [Learning&DevelopmentHub@torbay.gov.uk](mailto:Learning&DevelopmentHub@torbay.gov.uk)

We are also working on ensuring access for Early Help practitioners on Restorative Practice and Family Group Conferencing.

## PART 7 – Early Help Timeline

---

Thank you for reading the Torbay Partnership Early Help Strategy. We have made a lot of progress in our approach to Early Help since 2019, but our ambitions do not stop here. We are determined to build upon the work undertaken to date and further embed effective early help practice. In the table below, we highlight some of the key milestones which we are working towards.

Key Milestone	Intended Timescales
Embed the Early Help Assessment and implement the first round of Early Help Assessment Training, incorporating Lead Professional, Team around the Family, and the principles of Restorative Practice	September 2021 – February 2022
Deliver and embed the Locality Network meetings in Torquay, Paignton and Brixham	September 2021 – April 2022
Consider an Options Appraisal for the “front door” of Early Help with the intention of ensuring a timely and proportionate response to an early help need	December 2021
Consider an Options Appraisal and agree a plan for implementing a redeveloped Information, Advice and Guidance portal for Early Help	December 2021
Develop a detailed business case for the Early Help Hubs	January 2022

## PART 8 – Keeping Up to Date

---

We have revised our Early Help Website to help keep you up to date with the most current developments and documentation for Early Help. This can be found at <https://www.torbay.gov.uk/children-and-families/services-and-support/early-help/>

## APPENDIX 1 – Membership of The Locality Networks

The current list of partners engaged in the 3 Locality Forums are included here. Please note that this will inevitably change over time – please therefore check that you have the most recent version of the Induction Guidance on the Early Help Website. If your organisation is not on these lists – please let us know!

Torquay	
Service Deliverer	Service Delivered
0-19 Torbay	
Torbay and South Devon NHS Foundation Trust	Health Visiting, School Nursing Services and National Child Measurement Programme
Checkpoint	Young People's Substance Misuse Service, Advocacy and Independent Visitors' Service
Action for Children	Children's Centres
Torbay CSC - Early Help	
Torbay CSC - Early Help	Family Intervention Team
	Supporting Families Team
	Youth Homelessness Prevention Team
	Community Engagement Worker
Early Years Settings - 27 Childminders	
Abbey School Nursery	0-5years & Wrap around
Acorns Pre-School	0-5years & Wrap around
Furrough Cross Pre-School	0-5years & Wrap around

Hatfield Nursery	0-5years & Wrap around
Holy Angels Pre-School	0-5years & Wrap around
Kiddi Caru	0-5years & Wrap around
Little Palms Nursery	0-5years & Wrap around
Mama Bears (BR)	0-5years & Wrap around
Peekaboo Childcare Torquay Ltd	0-5years & Wrap around
Phoenix Childcare	0-5years & Wrap around
Rainbow Day Nursery	0-5years & Wrap around
Southernwood Nursery	0-5years & Wrap around
St Matthias Pre-School and Childcare Centre	0-5years & Wrap around
Tops Babbacombe	0-5years & Wrap around
Watcombe Children's Centre Nursery	0-5years & Wrap around
Willoughbee Childminding Services	Childminder Services
Imagine This Partners and Associated Services	
Chelston Action Group	COMMUNITY CENTRE/DEV
Children's Society, Torquay	YOUTH SERVICES AND TARGETED INTERVENTION
Chill'd Out Youth Project	COMMUNITY CENTRE/DEV
Eat That Frog	TRAINING PROVIDER
Fort Apache Adventure Playground	PLAYGROUND
LiveWest (Torbay Foyer)	HOUSING/YOUTH SERVICES



PHAB Torquay	COMMUNITY CENTRE/DEV
Play Torbay	PLAY SERVICES + ALTERNATIVE EDUCATION
Sendiass	SEND
South West Family Values	FAMILY INTERVENTION
St Margaret's Academy	PRIMARY SCHOOL
Torbay Community Development Trust	COMMUNITY DEVELOPMENT
Torbay Youth Trust	YOUTH SERVICES
Torre Abbey	YOUTH SERVICES
Turning Heads	EDUCATION SERVICES
Youth Genesis	YOUTH SERVICES
Other Engaged Partners	
Abbey Adventures Holiday Club	HOLIDAY CLUB
Acorn Centre	COMMUNITY CENTRE/DEVELOPMENT
Adopt South West	ADOPTION SERVICES
Air Cadets (Torquay)	UNIFORM SERVICES
Barnardos	YOUNG PEOPLE'S SUPPORT SERVICE
Baywide Primary Care Network	NETWORK OF PRIMARY CARE PROVIDERS
Burton Academy	ALTERNATIVE EDUCATION PROVISION
Careers South West	CAREERS GUIDANCE SERVICES

Carers Aid Torbay	SUPPORT
Checkpoint	MENTAL HEALTH
Children with Disability Team (CWD) Torbay Children's Services	SEND/FAMILY SUPPORT
Children's Learning Disability Health Team	SEND
Christians Against Poverty (CAP)	MONEY/SUPPORT
Cockington Primary School	PRIMARY SCHOOL
Combe Pafford School	SCHOOL FOR CHILDREN WITH ADDITIONAL NEEDS
Community Larder	FOOD BANK TORQUAY
DeCiDe	SEND/FAMILY SUPPORT
Department of Work and Pensions	ADULT EMPLOYMENT SUPPORT
Disability Support Torbay	SEND/SUPPORT
Ellacombe Academy	PRIMARY SCHOOL
Ellacombe Community Partnership	COMMUNITY CENTRE/DEVELOPMENT
Family Matters	FAMILY THERAPY
FIPCAN (Family Information and Play for Children with Additional Needs)	SEND/FAMILY SUPPORT
Hatfield Nursery Zoo Club	HOLIDAY CLUB
Have Your Say	MENTAL HEALTH
Homeland Primary School	PRIMARY SCHOOL
Helping Hands	YOUTH SUPPORT

Holiday Activities and Food Programme	TARGETED ACTIVITY / FOOD PROGRAMME
Home-Start, South and West Devon	CHILD CARE AND FAMILY SUPPORT
Learning Academy Partnership	LEARNING ACADEMY
Libraries Unlimited	LIBRARY SERVICES
Lifeworks	LEARNING DISABILITIES SERVICE
LiveWest	HOUSING ASSOCIATION
NHS Talkworks	PARENTAL MENTAL HEALTH SERVICES
Our Lady of the Angels Catholic Primary School	PRIMARY SCHOOL
Medway Centre	COMMUNITY CENTRE/DEVELOPMENT
Phoenix Childcare Holiday Scheme	HOLIDAY CLUB
Preston Primary	PRIMARY SCHOOL
PLUSS	EMPLOYABILITY/ADULT SUPPORT
RELATE	CHILD CARE AND FAMILY SUPPORT
Riviera Life Church	CHURCH/CHURCH BASED
SALT - Speech & Language Therapy	THERAPY
Sherwell Valley School	PRIMARY SCHOOL
Shekinah	EMPLOYABILITY/MENTAL HEALTH/ADULT SUPPORT
Shiphay Learning Academy	PRIMARY SCHOOL
Spires College	SECONDARY SCHOOL
St Cuthbert Mayne School	SECONDARY SCHOOL

St Mary Mags	CHURCH/CHURCH BASED
St Marychurch Pre-School	PRE-SCHOOL
St Matthias Church	CHURCH/CHURCH BASED
The Mooring	MENTAL HEALTH
Tissues and Issues	SEND/FAMILY SUPPORT
Torbay Boys' Grammar School	GRAMMAR SCHOOL
TDAS	DOMESTIC ABUSE SERVICES
Torbay Council Attendance Improvement	SCHOOL ATTENDANCE SERVICE
Torbay Council Early Years Services	EARLY YEARS SERVICE
Torbay Council (Mental and Suicide Prevention Alliance)	MENTAL HEALTH SUPPORT SERVICE
Torbay Council SEND Services	SEND SERVICES
Torbay District Scouts	UNIFORM
Torbay Drug and Alcohol Service	SUBSTANCE SUPPORT
Torbay Education Safeguarding Service	SAFEGUARDING SUPPORT TO SCHOOLS
Torbay Council Elective Home Education Team	HOME EDUCATION SERVICES
Torbay Medical Research Fund	COMMUNITY ENGAGEMENT SERVICES
Torbay Olympic Gymnastics Club	SPORTS ORGANISATION
Torre CoE Academy	SECONDARY SCHOOL
TORQUAY ACADEMY	SECONDARY SCHOOL
Torquay United Community Sports Trust	SPORTS

Upton Vale Baptist Church	CHURCH/CHURCH BASED
Watcombe Children's Centre Nursery Holiday Club	HOLIDAY CLUB
Watcombe Primary School	PRIMARY SCHOOL
Windmill Centre, Torquay	COMMUNITY CENTRE/DEVELOPMENT

Paignton	
Service Deliverer	Service Delivered
0-19 Service	
Torbay and South Devon NHS Foundation Trust	Health Visiting, School Nursing Services and National Child Measurement Programme
Checkpoint	Young People's Substance Misuse Service, Advocacy and Independent Visitors' Service
Action for Children	Children's Centres
Early Years Settings	
Braeside at Sunflowers	0-5years & Wrap around
Collaton St Mary Pre-School	0-5years & Wrap around
Mama Bears (LR)	0-5years & Wrap around
Mama Bears (MR)	0-5years & Wrap around
Muddy Wellies Nursery	0-5years & Wrap around
Preston Community Pre-School	0-5years & Wrap around
Roselands Community Nursery & Playschool	0-5years & Wrap around

St Pauls Second Steps Pre-School	0-5years & Wrap around
White Rock Pre-School	0-5years & Wrap around
Imagine This Partners and Associated Services	
Doorstep Arts	YOUTH SERVICES - ARTS
Eat That Frog	TRAINING PROVIDER
Foxhole Community Association	COMMUNITY DEVELOPMENT
Foxhole Unique Neighbourhood (FUN)	COMMUNITY DEVELOPMENT
Gaia Giving	COMMUNITY DEVELOPMENT
Great Parks Community Association	COMMUNITY DEVELOPMENT
HealthWatch Torbay	HEALTH
Home-Start, South and West Devon	CHILD CARE AND FAMILY SUPPORT
Imagine Torbay Multi Cultural Group CIC	MULTI-CULTURAL GROUP
Kings Ash Academy	PRIMARY SCHOOL
Libraries Unlimited	LIBRARY SERVICES
Lifeworks	LEARNING DISABILITIES SERVICE
Love Enterprise Group/Glo Church	YOUTH SPORTS + RELIGION
Paignton Community & Sports College	SPORTS
Play Torbay	PLAY SERVICES + ALTERNATIVE EDUCATION
Sanctuary Housing	HOUSING
Sound Communities CIC	YOUTH SERVICES

St Cuthbert Mayne School	SECONDARY SCHOOL
Wild Fox Adventure Playground	PLAYGROUND
YMCA (South Devon)	YOUTH SERVICES AND CHILD CARE
YMCA South Devon - Jungle Holiday Club	HOLIDAY CLUB
Youth Genesis Trust	YOUTH SERVICES
Other Engaged Partners	
Adopt South West	ADOPTION SERVICES
Barnardos	YOUNG PEOPLE'S SUPPORT SERVICE
Brunel Academy	ALTERNATIVE PROVISION SCHOOL
6th Torbay Britannia Sea Scouts RN29	UNIFORMED SERVICES
Centrepeace	MENTAL HEALTH SERVICES
Children & Families in Grief	BEREAVEMENT SUPPORT SERVICES
Child and Family Health Devon	CHILD AND FAMILY HEALTH SERVICES
Christ Church Youth Club	YOUTH SERVICES
Church 180	CHURCH/CHURCH BASED
Community Larder	FOOD BANK PAIGNTON
Crafty Fox	CAFÉ
Curledge Street Academy & Nursery	PRE-SCHOOL
Daybreak (Step One), Paignton	SUPPORT
Department of Work and Pensions	ADULT EMPLOYMENT SUPPORT

DOVES	SEND
Down South	SEND
Goodrington Methodist Pre-School	PRE-SCHOOLS
Great Parks Chapel	CHURCH/CHURCH BASED
Holiday Activities and Food Programme	TARGETED ACTIVITY / FOOD PROGRAMME
Integrated Youth Support Service (IYSS)	TARGETED YOUTH INTERVENTION
Kids Matter	FAMILY SUPPORT
Kings Ash Academy	PRIMARY SCHOOL
Learning Academy Partnership	LEARNING ACADEMY
Lifeworks	LEARNING DISABILITIES SERVICE
Living Waters Church	CHURCH/CHURCH BASED
Mayfield School	SCHOOL FOR CHILDREN WITH ADDITIONAL NEEDS
Mencap	SEND/SUPPORT
Oldway School	PRIMARY SCHOOL
Paignton Academy	SECONDARY SCHOOL
Paignton Baptist Church	YOUTH SERVICES
Paignton Library	LIBRARY
Parkfield Torbay	OTHER
Polonia Youth Club	YOUTH SERVICES
Reach Outdoors	SPORTS SERVICES



Riviera Tuition	PRIMARY SCHOOL
ROC Aspects, ROC Active, ROC Creative Torbay	SPORTS/LEARNING/EMPLOYABILITY
Salvation Army, Paignton	CHILD CARE AND FAMILY SUPPORT
Shiphay Learning Academy	PRIMARY SCHOOL
St Cuthbert Mayne School	SECONDARY SCHOOL
St Matthias Church	CHURCH / CHURCH BASED
South West Intervention Services	24 HOUR EMERGENCY SUPPORT
Stroke Association	STROKE PREVENTION AND SUPPORT SERVICES
TALKWORKS (prev. DAS)	PARENTAL MENTAL HEALTH SUPPORT
TDAS	DOMESTIC ABUSE SERVICES
Torbay & District Lifesaving & Lifeguard Club	SPORTS
Torbay BMX	SPORTS
Torbay Carers Service	SUPPORT
Torbay Citizens Advice	ADVISORY SERVICE
Torbay Council Attendance Improvement	SCHOOL ATTENDANCE SERVICE
Torbay Council Early Years Services	EARLY YEARS SERVICE
Torbay Council Elective Home Education Team	HOME EDUCATION SERVICES
Torbay Council SEND Services	SEND SERVICES
Torbay Education Safeguarding Service	SAFEGUARDING SUPPORT TO SCHOOLS
Torbay Girls Grammar School	SECONDARY SCHOOL

Torbay Medical Research Fund	COMMUNITY ENGAGEMENT SERVICES
Torbay Council (Mental and Suicide Prevention Alliance)	MENTAL HEALTH SUPPORT SERVICE
Torbay Special Needs Playscheme & Saturday Club	HOLIDAY CLUB
What's Your Problem	ADVISORY SERVICE/EMPLOYABILITY
White Rock Primary School	PRIMARY SCHOOL
Youth Offending Team (YOT)	YOUTH INTERVENTION/SERVICES

Brixham	
Service Deliverer	Service Delivered
0-19 Service	
Torbay and South Devon NHS Foundation Trust	Health Visiting, School Nursing Services and National Child Measurement Programme
Checkpoint	Young People's Substance Misuse Service, Advocacy and Independent Visitors' Service
Action for Children	Children's Centres
Early Years Settings	
Butterflies Pre-School (Brixham)	0-5years & Wrap around
Galmpton Pre-School	0-5years & Wrap around
The Nest Neighbourhood Nursery	0-5years & Wrap around
Imagine This Partners and Associated Services	
Doorstep Arts	YOUTH SERVICES - ARTS

Indigos (Play Torbay)	PLAY SERVICE
YES! Brixham	COMMUNITY DEVELOPMENT /EMPLOYABILITY/HOUSING/YOUTH SERVICES
Indigos Go Wild Adventure Playground	PLAYGROUND
Lupton House	THERAPEUTIC SUPPORT
Play Torbay	PLAY SERVICES + ALTERNATIVE EDUCATION
South West Family Values	SUPPORT SERVICES FOR CHILDREN AND FAMILIES
Youth Genesis	YOUTH SERVICES
Other Engaged Partners	
Air Cadets (Brixham)	UNIFORM
Adopt South West	ADOPTION SERVICES
Apricot Centre	WELLBEING SERVICE
Barnardos	YOUNG PEOPLE'S SUPPORT SERVICE
Boys Brigade (1st Brixham)	UNIFORM
Brixham Baptist Church	CHURCH/CHURCH BASED
Brixham Church of England School	PRIMARY SCHOOL
Department of Work and Pensions	ADULT EMPLOYMENT SUPPORT
Holiday Activities and Food Programme	TARGETED ACTIVITY AND FOOD PROGRAMME
Home-Start, South and West Devon	CHILD CARE AND FAMILY SUPPORT
Torbay Council Attendance Improvement	SCHOOL ATTENDANCE SERVICE
Torbay Council Early Years Services	EARLY YEARS SERVICE

Torbay Council Elective Home Education Team	HOME EDUCATION SERVICES
Torbay Council (Mental and Suicide Prevention Alliance)	MENTAL HEALTH SUPPORT SERVICE
Torbay Council SEND Services	SEND SERVICES
TDAS	DOMESTIC ABUSE SERVICES
Torbay Education Safeguarding Service	SAFEGUARDING SUPPORT TO SCHOOLS
Torbay Medical Research Fund	COMMUNITY ENGAGEMENT SERVICES
YMCA	HOUSING SERVICES

**Revised strategy to be publish March 2026**