

Highways Development Control: Standing Advice for Minor Development Application

Revision 7 – February 2024

Contents

Version control.....	4
Section 1: Introduction	5
1.1: Outline	5
1.2: Consultation Process.....	5
1.3: Application to which Standing Advice Applies	5
Section 2: Highways Design Guide	7
Section 3: Design Requirements/Details	8
3.1: Visibility Splays.....	8
3.2: Pedestrian Visibility	8
3.3: Surfacing and Drainage.....	8
Section 4: Creation/Alteration of a Driveway.....	9
Section 5: Formation of Agricultural Access	11
Section 6: Parking and Turning Requirements	12
6.1: Parking	12
Sustainable travel	12
Cycle parking	12
Waste storage.....	14
6.2: Turning	14
Section 7: Highway Limits and Rights of Way	15
Section 8: Signage, Lighting, and Illumination	16
8.1: Signage Details	16
8.2: Street Lighting	16
Overall design and specification	16
Supplies	17
Materials	18
Detailed design	18
8.3: Luminaires/Lanterns	19
Residential Roads.....	19
Main Roads.....	19
8.4: Required information	20
8.5: Illuminated signs and bollards	20
8.6: Installation	21

Section 9: Additional Information.....	22
Section 10: Conditions and Reasons for Refusal	23
10.1: Standard Conditions	23
10.2: Reasons for Refusal.....	23
Appendix 1: Visibility Requirements	24
Appendix 2: Guidance for new vehicle crossing/parking for a private driveway	26
1: Is there enough space in your garden?	26
2: Is the access wide enough?	27
3: Separate entrance and exit	27
4: Distance from road junctions	27
5: Visibility requirements.....	27
6: Shared access.....	29
7: Drainage.....	29
8: Lamp columns and street furniture	29
9: Trees and root protection area calculation	29
10: Gates.....	29
11: Ownership of the property	29
12: Footway crossover in the Public Highway	30
Appendix 3: General Turning and Manoeuvring Requirements	31
Appendix 4: Highway Issues General Checklist	34
Appendix 5: Local Plan and Neighbourhood Plan Policies.....	35
Local Plan – Policy TA1: Transport and Accessibility	35
Local Plan – Policy TA2: Development Access	37
Accessing the highway network.....	37
For major developments	37
Local Plan – Policy TA3: Parking Requirements	38
Torquay Neighbourhood Plan – Policy TH9: Parking Facilities	38
Paignton Neighbourhood Plan – Policy PNP 1(d): Residential Development.....	38
Brixham Neighbourhood Plan – Policy T1: Linking of New Developments to Travel Improvements.....	39
Brixham Neighbourhood Plan – Policy BH8: Access to New Dwellings	39
Appendix 6: Torbay Council Classified Roads (March 2020).....	40

Version control

Revision	Date	Page	Amendment
1	15/08/2018	7	Garage dimensions added under 6.1
2	05/06/2019	10	8.2 Luminaires/Lanterns added
3	17/03/2020	Multiple pages	Various updates to development plan policy framework, parking standards, dimensions, and related diagrams. Appendices 2, 3, new 4, 5 & 6
4	02/06/2020	11	8.1 LED Signage - amendment to 4th paragraph
5	17/06/2021	Multiple pages	Updated Section 8 to incorporate new developers guide. Put document into new template.
6	15/07/2021	Multiple pages	Cycling guidance updated throughout. Minor corrections throughout.
7	29/02/2024	14	Addition to the end of section relating to cycle parking

Section 1: Introduction

1.1: Outline

The standing advice will form the substantive response of the Highway Authority to a planning consultation, in a generic format.

This document indicates those applications to which this standing advice is likely to apply. It gives guidance to applicants and to the Local Planning Authority (LPA) in order that they may determine those minor planning applications which the Highway Authority indicates this standing advice applies to.

Please note that irrespective of the grant of planning consent by a Local Planning Authority, there may be additional necessary licences or agreements to be secured from the Highway Authority, to allow works on or adjacent to the public highway.¹

The Local Planning Authority policy framework from which this Standing Advice also draws includes the Torbay Local Plan (2012 to 2030) and the three Neighbourhood Plans for Torquay, Paignton, and Brixham Peninsula.² These documents include specific policies and guidance related to highways and transport and should be considered in addition to this guidance.

1.2: Consultation Process

Planning applications which affect the public highway will continue to be passed to the Highways Team for consultation.

The highways team will respond in the following way:

- those applications that require 'no observation'
- those to which this Standing Advice applies
- those where the response will be 'requires further consideration'

Where the Highway Authority considers that an application 'requires further consideration', a more detailed response will be provided by Highways officers.

1.3: Application to which Standing Advice Applies

The Highway Authority will continue to make 'no observation' on any planning application that has met the requirements of this guidance or that has no impact on the highway network.

Those minor applications where standing advice is likely to apply will include but may not be limited to:

- Householder extensions (conservatories, small rear extensions, etc.)

¹ www.torbay.gov.uk/highways-licenses

² www.torbay.gov.uk/planning-policies

- Householder applications including new or altered accesses
- New single dwellings, or a pair of dwellings
- Changes to parking arrangements (e.g., change of use of garage, extension over a carport or parking space, etc.)
- Conversion or subdivision of existing buildings to multiple dwellings or flats (up to 3) where there is no significant change to existing highway access
- Agricultural buildings or accesses
- Barn conversions
- Advertisements and signs

If a minor application as listed above is considered by the Highway Authority to have a significant impact on the highway network, (highway safety implication, access to a classified or high-speed road, or other conflict which is not covered by standing advice, etc) then the Highway Authority may choose to comment in greater detail. This will be indicated through the initial consultation process.

Note: Other proposals (i.e., major planning applications and some commercial applications) are likely to be led by the Strategic Transport team and will include the Highways team responses.

Section 2: Highways Design Guide

Reference will be made in this document to the 'Highways Design Guide'.

This is the approved (November 2012/2015) guidance for new developments in Torbay in respect of highway requirements. This document should be read in conjunction with the Highways Design Guide for new developments which can be found at the link below:

www.torbay.gov.uk/highways-design-guide

Section 3: Design Requirements/Details

3.1: Visibility Splays

Where accesses and junctions are to be formed, the requirements are detailed in the Highways Design Guide (pages 23 – 30). Brief details may also be found in Appendix 1 to this document.

Visibility splays should be determined by the posted speed limit, unless a lower 85th percentile speed can be proven from independent speed surveys, which must be submitted at the application stage.

The Highway Design Guide visibility requirements are generally in accordance with the Manual for Streets; however, alternate standards are listed for strategic routes. Areas where the alternate standards apply are listed in Appendix 1.

3.2: Pedestrian Visibility

Where a new pedestrian access is proposed, it is necessary to ensure that adequate visibility splays are provided. These will be 2.0m x 2.0m and will be provided to the rear of the footway, or where the access meets the carriageway edge.

3.3: Surfacing and Drainage

Adequate provision shall be made to ensure that surface water does not drain onto the public highway. Equally, any new access shall be designed to ensure that highway water does not drain onto the development site. Drainage advice is included within the Highway Design Guide.

Section 4: Creation/Alteration of a Driveway

Visibility splays shall be in accordance with the 'Highway Design Guide' visibility splay criteria (Appendix 11.3) unless otherwise stated. The visibility splays will be required to be provided within the control of the applicant, which is allocated within the red/blue lines of the applicants' boundary or highway land and shall be clearly marked on the application documents.

Where a new access is proposed to be formed within an existing residential street, then a lower visibility distance can be accepted providing it accords with the provision of adjacent accesses and would therefore be deemed as having already set a precedent.

Any access for a single residential unit should have a minimum width of 3.2 metres. Where an access serves more than one residential unit, adequate width to pass two vehicles should be secured. A minimum width of 5.0 metres over a minimum of 6.0 metre length is recommended. Note that the Local Highway Authority will seek to adopt shared drives serving over 5 properties (see Highways Design Guide page 16).

The maximum gradient of any driveway should ideally be 1 in 20 but shall not exceed 1 in 8. The gradient of a vehicle footway crossing shall not exceed 1 in 12.

Any new or altered access must be consolidated or surfaced (not loose stone or gravel) for at least the first 5.0 metres of its length, as measured from the edge of the adjoining carriageway.

Positive drainage shall be provided to prevent the discharge of water from private land to the adopted highway. It may also be considered necessary to take measures to prevent the "run off" of water from the adopted highway onto private land. Details of such an arrangement should be approved by the Highway Authority prior to implementation.

Generally, a private drive serving a single dwelling need not have a turning facility to turn a car. An exception may be deemed necessary by the Highway Authority where a private drive leads directly off a transition road, high speed road, or classified road. There should be a turning facility on the development footprint so that a vehicle can enter the highway in a forward gear (see Section 6 and Appendix 3).

Any entrance gates shall be hung to open inwards and shall be set back a minimum distance of 6.0 metres from the carriageway edge. Gates for pedestrian only access should be hung to open inwards.

Having regard to the powers of the Highway Authority under the Highways Act 1980 the applicant is advised that the creation or alteration of an access to the highway will require a vehicular crossing licence. This must be obtained from the Highway Service Manager through the link below:

www.torbay.gov.uk/droppedkerbscrossover

In general, new driveways to properties should demonstrate that when existing on-street parking is lost as a result of any new vehicular crossings, there is a net increase in overall parking provision.

Appendix 2 contains a further guidance notes for new vehicle crossings, private driveways, and parking.

Section 5: Formation of Agricultural Access

Visibility splays for an agricultural access are the same as those required in Section 3 of this document.

Section 6: Parking and Turning Requirements

6.1: Parking

The parking provision for developments should be in accordance with the adopted Torbay Local Plan 2012-2030.³

The requirements for parking space and garage dimensions are also contained within the Torbay Local Plan (see Policy TA3 Parking requirements and Appendix F). Please note that the absolute minimum length of a parking space adjoining the highway is 5.5m and this must be clearly demonstrated on the application documents. The general guide for parking requirements is noted in Appendix 2.

Please also see the Torquay Neighbourhood Plan Policy TH9 (Parking Facilities)⁴ and the Paignton Neighbourhood Plan PNP 1(d) (Residential Development).⁵

The required dimensions for a single garage are 6.0m x 3.3m, and for a double garage ideally 6.0m x 6.6m (absolute minimum of 6.0m x 5.8m), subject to additional space for refuse and cycle storage (0.75m width and 1.0m depth) unless dedicated facilities are provided elsewhere within the curtilage (see below).

Sustainable travel

In line with Local Plan Policies TA1 (Transport and Accessibility), TA2 (Development Access) and TA3 (Parking Facilities), the Council is seeking to make sustainable travel the first choice by ensuring that sustainable and environmentally acceptable modes of transport are an integral part of developments with regard to the hierarchy of sustainability. This includes provision for cycle storage and low emission vehicles including the provision of electric charging facilities.⁶

Cycle parking

Cycle parking should be secure, covered, preferably constructed from the same materials as the main structure, and of a size derived from the guidance on space requirements. The proposal should make it clear whether garden sheds are to be used for both cycle storage and general garden storage. Domestic bike storage sheds should have walls and floors that are stout enough (refer to SBD advice regarding shed construction and security) to allow the attachment of wall bars and stands (e.g., SBD anchors) fitted with anti-tamper fixings ('lockable doors'). As a minimum requirement, doors should be secured by SBD locks.

Where more than two bicycle spaces are required, some form of stand or wall fixing should be provided. Unless other dedicated covered secure storage space is provided within equal proximity, at least 1m squared storage space should be provided within the shed (for garden equipment, etc.), in addition to that provided for cycle parking. The applicant should indicate how SBD design

³ <https://www.torbay.gov.uk/council/policies/planning-policies/local-plan/local-plan/>

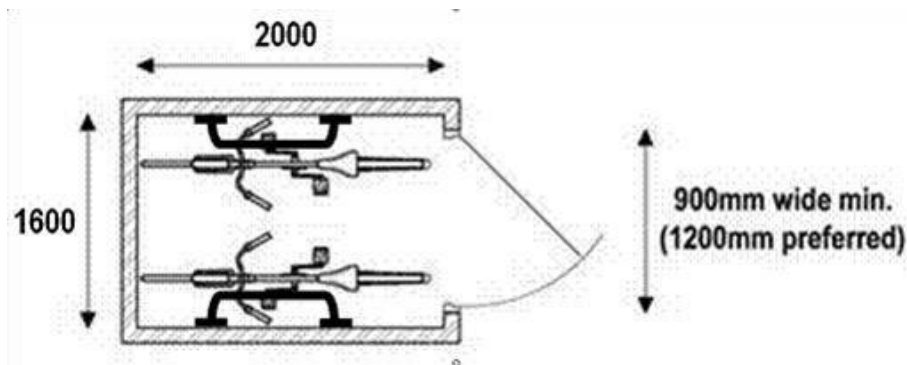
⁴ <https://www.torbay.gov.uk/council/policies/planning-policies/neighbourhood-plans/torquay-np/>

⁵ <https://www.torbay.gov.uk/media/12972/paignton-neighbourhood-plan.pdf>

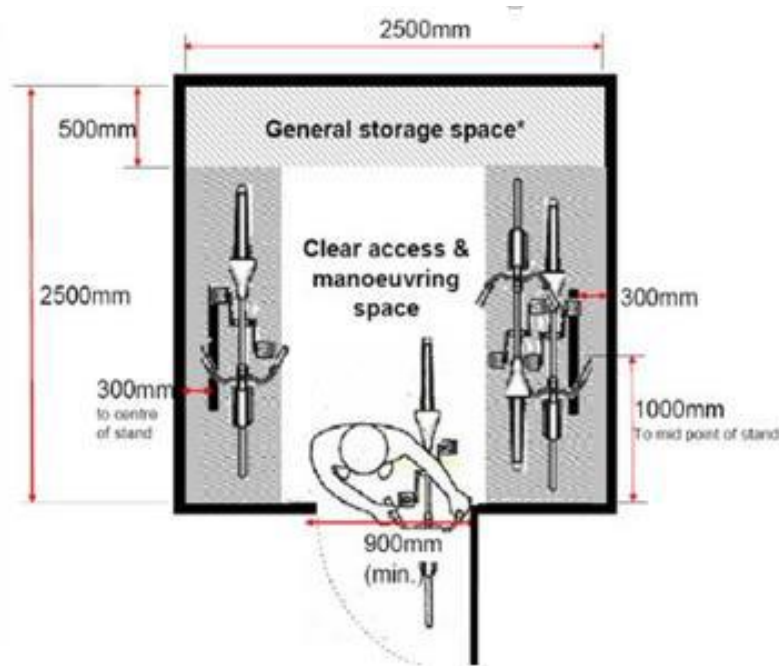
⁶ Electric vehicle charging points enjoy permitted development rights.

and fixings/anchors are to be delivered for each dwelling – a detailed example of each complete design for the relevant properties will probably suffice.

For a 2-bedroom plot, the LHA would advise that the cycle parking area for two cycles should be accessed by means of a door at least 900mm wide (preferably 1200mm wide) and a minimum of 2000mm deep (or more, if incorporating an access/manoeuvring aisle in preference to multiple/wider doors for larger numbers of cycles).



Where the plot is 3 or more bedrooms, a shed of 2.5m by 2.5m (plus 0.5m additional garden storage space if no additional garden storage is provided) and cycle fixings should be provided.



Any dwellings which do not have direct access to their gardens (and the cycle shed storage) would have some form of 'short stay' cycle parking (e.g., a wall fixing at the side of the house by a driveway/entrance, which does not obstruct pedestrian routes – perhaps suitably designed railings may provide this opportunity).

Where sheds are not provided, cycle storage in garages should be provided. The size of the garage must allow cycles to be removed from the garage easily without first driving out any car parked within it. To accommodate this, a minimum clear space of 900mm should be provided between the predicted position of the car and any parked cycle/other obstacle/wall etc. and a storage and circulation space – i.e., total garage dimensions of 3,300mm by 6000mm as a

minimum, plus 0.75 for cycle storage and 1000m if including other storage (e.g., refuse storage) as set out in Appendix F(h) to Policy TA3 in the Local Plan 2012-2030.

Please refer to DFT [LTN 1/20](#) – Section 11.

Waste storage

General advice on the dimensions and siting of waste and recycling storage is provided online:

www.torbay.gov.uk/waste-storage-guidance

As a minimum, domestic properties should demonstrate sufficient hard standing storage space for one 240 litre wheelie bin, two 55 litre recycling boxes and one 25 litre food waste container per property. They should also demonstrate that there is an accessible route from the point of bin storage to the point of presentation for waste collection. An accessible route should be of sufficient width for the size of bin and should not involve manoeuvring bins over steps or uneven ground which would represent a health and safety hazard.

If properties do not have direct rear garden access to the proposed bin storage area (slabs), then a storage point at the side/front of the property should be constructed on a flat all-weather surface. This area should be screened/sensitively designed considering landscaping objectives. (Local Plan Policies DE1 Design and DE3 Development Amenity). Collection points must be free from obstructions such as bollards and parked cars and should not result in reduced visibility at junctions. See the Council's Waste Recycling Guidance for further details.

The collection vehicle should be able to approach within 10m of a collection point.

The Council does not have to collect from unadopted roads. The Council and its contractors are not indemnified against damage to property under these circumstances. The Council may also need to assess that the surface is suitable for the collection vehicles to manoeuvre safely and for manual handling.

6.2: Turning

Turning will be required independent of the necessary parking provision where an access is onto a classified road, transition road, or high-speed road.

Turning diagrams are provided within the Highways Design Guide in Appendix 3.

Section 7: Highway Limits and Rights of Way

It is incumbent on the applicant and planning officers to check for conflict with any adopted highway, including Public Rights of Way. For details of the adopted public highway in Torbay, please use the map on the web link below:

www.torbay.gov.uk/Gis/FindMyNearest/

Development in the public highway (including advertisements and signs) is **not** permitted on the adopted highway without the prior explicit permission of the Highway Authority. If considered acceptable, development in the adopted highway may involve licencing or extinguishment procedures.

Any impact on a Public Right of Way should be discussed beforehand with the Torbay Council Parks and Open Spaces team.

Section 8: Signage, Lighting, and Illumination

8.1: Signage Details

Any development shall ensure that external lighting does not interfere with the use of the highway (dazzle, glare, etc) or considered to be prejudicial to highway safety by virtue that it would be likely to distract, or confuse road users because its size, brightness, detailing and proximity to the public highway. Signage will be assessed on a site-by-site basis.

If any existing street furniture is affected by the proposal, applicants should contact the Highway Authority. Other utilities affected should also be contacted to ensure they can be appropriately re-located.

LED internally illuminated sign/advertisements should refer to the Street Lighting Institution guidance.

In order to make a proper assessment of highway impact there would be a need to have precise details of size, height, and location, primarily to ensure that the sign does not restrict visibility. However, without prejudice to this (and dependent upon the location, accident records, and highway classification), it is unlikely that there would be an objection on highway safety grounds as long as the display shows only static images (i.e., no animated adverts, although the adverts could be on a cycle), the advertisements do not carry detailed writing, email addresses, phone numbers etc. that could distract drivers. We may need to condition the frequency of image changes and the intensity of illuminations. This would be explored further at application stage.

A suitable condition would need to be included within the permission of an application; for example, “The structure may be required to be either temporarily or permanently removed at the request of the Highway Authority to facilitate any future highways maintenance or improvements.”

Also required would be provision for removal should the company in question cease trading. We would not want the signs to remain in place unused and unmaintained, so again we may need a condition to that effect, potentially a bond or indemnity.

8.2: Street Lighting

Overall design and specification

The specification is intended as a guide and used to bring consistency within the policies and lighting stock of Torbay Council. It should be borne in mind that all proposals put forward by the Developer are subject to confirmation by Torbay Council’s Street Lighting Section.

It is desirable that the installation of any street lighting scheme is carried out by the current term maintenance contractor, who will be able to advise the developer of Torbay Council’s lighting specification and carry out all the requirements as detailed in these guidelines. Contact details are:

SSE

Heron Road, Sowton Industrial Estate

Exeter, Devon, EX2 7FB

Contact Jerry Kay (Business Manager) - 07774763952

Street lighting must be planned as an integral part of the layout of roads and footpaths. Adequate provision is needed to increase the sense of personal security, to reduce night-time accidents, to discourage crime, and to provide residents with a sense of well-being.

The street lighting section will generally check completed designs but, if the developer wishes, will undertake the designs of the scheme. For the latter, a charge will be levied depending on the size and complexity of the requirements.

Any design should have due regard for environmental factors to include energy consumption, carbon emissions, light intrusion, animal considerations e.g. bats, and must conform to standards laid down in EN 13201 BS5489. We are looking for P4 as a lighting class on switch on and would like to achieve P5 on the first dimming phase between 10pm and 12.30am.

The minimum information required when submitting a design for approval will be:

- Lighting class to which the scheme has been designed, and information used for its selection
- Type of luminaire, light source, and column height.
- Isolux drawing indicating maximum, minimum, average horizontal illuminance lux levels, and min/average ratio
- Lamp wattage, maintenance factor, and TI value
- The scheme drawing will be of a recognised scale and submitted both in DWG and PDF format and contain the positions of the proposed lighting plus any existing streetlights where the new road abuts an existing highway. It should be made clear the street light position in relation to the surrounding properties and access ways.
- The drawing will indicate the lantern(s) specification, gear type including dimming facilities, photocell to be used and column type.

The Engineer reserves the right to amend the final location of any streetlight which may have resulted by amendments to the infrastructure or inaccurate drawings on which the design was based.

Supplies

Street lighting electrical supplies, cut-outs, and cable layout will be a matter for the local Distribution Network Operator (DNO), which for the area of Torbay is Western Power Distribution (WPD).

For more information contact:

The Unmetered Connections Team

Western Power Distribution (South West) plc

Osprey Road, Sowton Industrial Estate

Exeter, EX2 7WP

Independent Distribution Network Operators (IDNO) can be used as an alternative to WPD to provide the service, which should be stated in your submission if this is done.

The final connection cannot be made without evidence that the relevant Supply Meter Number (MPAN) has been registered.

Before energisation of any streetlight, it is the Developers responsibility to ensure that the supply has been registered with an authorised energy supplier and that any electricity charges is paid to that supplier until the site is adopted under the Section 38 Agreement, the responsibility for payment will then become Torbay Council's. The trading of this energy will be carried out half hourly (HH) to tie in with Torbay Council.

For illuminated island bollards, WPD will terminate their supply in an approved feeder pillar situated at the rear of the adjacent footpath. Ducting, with drawstring, will then be laid from the pillar to the centre of the nearest bollard and then to all the others in turn. The cable from the pillar will then be the responsibility of Torbay Council upon completion of the Section 38 agreement.

Materials

Materials will generally conform to those specified for standard maintenance works for Torbay. Details can be obtained from the Highways Street Lighting Section and will be included on the plan to any design carried out by the group.

Should the developer wish to use specific or ornate equipment, the manufacturer and type must be agreed with the street lighting section before any design is carried out.

It is expected that the developer will provide additional items of specialised materials i.e., lanterns or columns to the Highway Authorities Store for maintenance purposes. The quantity will depend on number of units within the scheme.

It should be borne in mind that materials can take 10 weeks from receipt of order to delivery, specialist equipment will take longer. This time scale must be considered when issuing instructions to Contractors or Manufacturers to enable the scheme to be completed on time.

Detailed design

Details of the layout and design of a street lighting scheme will form part of the Section 38 submission. It will show exact location, height of column, bracket projection (if any), lamp type, and wattage.

Details of equipment to be used will be specified on the drawing including any special requirements. Standard equipment currently used is:

- Lighting columns/signposts – C.U. Phosco galvanised steel.
- 5m Signpost - R2505T01/GFR/PL
- 6m height column – R2506T01S355/GFR
- 8m height column – R2608A03/GFR
- 10m height column – R2710001H50/GFR

All columns situated in areas not accessible by vehicles, e.g., footpaths, will be of the raised and lower type.

Raised and lower columns shall be 5 metre C.U. Phosco - RM505TO1DL2/GFR

Lighting columns will no longer be painted in Torbay. Signposts will normally be painted grey RAL 18-B-25; however, some units will be black to form part of the street scene.

Columns should be sited to the back of footpath wherever possible, or at least 0.5m behind the kerb face if this is not practical. If columns are to be positioned in grass or soft verge, then a concrete plinth 0.5m x 0.5m x 0.1m deep will be provided that slopes away from the column base. The planting depth will be as per manufacturer's specifications.

8.3: Luminaires/Lanterns

Where new lighting columns are proposed, please refer to the Torbay Highways Design Guide.

Residential Roads

6 metre columns – Holophane S-Line 19w LED 3000K post top electronic driver. With 7-pin NEMA socket. Zodian Z Cell 35/18.

Residential dimming regime:

- Dusk to 22:00: 100%
- 22:00 to 00:30: dim to 70%
- 00:30 to 06:00: dim to 50%
- 06:00 to dawn: 100%

Main Roads

Columns over 6m, Holophane R-Line, 91watt, 4000k. With 7-pin NEMA socket. Zodian Z Cell 35/18.

Main road dimming regime

- Dusk to 00:30: 100%
- 00:30 to 06:00: dim to 77%
- 06:00 to dawn: 100%

As part of Torbay Council's continuing aim to reduce energy and carbon emissions, each luminaire must include the option to provide dimming in electronic, step less 1% increments. This provides an average wattage of 11.25 over a 24hr period, should you wish to provide an alternative that provides similar savings Discussions with the street lighting section are essential for agreement of the final specification and requirements.

Some locations have a style and colour of their own and should be considered when designing a scheme. In environmentally sensitive areas, such as Conservation Areas, details of the type of lighting proposed should be indicated at the time of the planning application.

If the Developer has had this specification for over six months, then before installation of the streetlights commences, they should contact the street lighting section to ensure the information they have is still current quoting the date on the last page.

8.4: Required information

The developer must provide the Highway Authority with all information relating to the type of equipment used and date of installation on the appropriate forms, including electrical test results and certificate.

Information of the exact column location, street light number, lantern details and installation date will be required as soon as practicable following erection of the streetlight, the Authority will then enter the details on its Street Lighting Inventory records.

Should the Developer wish the Authority to undertake any of this work, the cost will be borne by the developer.

Full inventory requirements can be obtained from the Highways Street Lighting Section.

8.5: Illuminated signs and bollards

Illuminated signs and bollard are also the responsibility of the street lighting section if included in the Section 38 agreement. Wherever possible signs should be attached to streetlights so as to avoid street clutter

The sign face material must be of 3M diamond grade reflective sheeting or equivalent.

Where appropriate an LED solar powered bollard should be used to confirm with Torbay Councils environmental policies.

Details of equipment to be used will be specified on the drawing including any special requirements. Standard equipment currently used is:

- Bollard Shell: Simmons Simbol shell
- Bollard Base: Simmons Global
- Solar Bollard: Pudsey Diamond Solabol

- Sign light: TMP Apollo Alpha LED

Solar only to be used to replace existing solar.

8.6: Installation

All installations must comply with the Electricity at Work (Health & Safety) Act 1989, Institute of Electrical Engineers (IEE) 18th Edition wiring Regulations, Institute of Lighting Engineers (ILE) Code of Practice for Electrical Safety in Lighting Operations subsequent revisions and comply with the specification and layout on the agreed street lighting drawing.

Once a streetlight or sign has been energised, the developer shall attach by means of a non-metallic cable ties a stiffened unit ownership sign, a sample of which is given below.

<p>THIS IS THE RESPONSIBILITY OF THE DEVELOPER, NOT TORBAY COUNCIL.</p> <p>SHOULD ANY DEFECT OCCUR, PLEASE CONTACT THE DEVELOPER ON THE DETAILS BELOW.</p>
<p>DEVELOPER'S NAME POSTAL ADDRESS Daytime phone: Emergency phone:</p>

This sign shall remain attached until the agreed date of adoption.

The unit number as agreed with the street lighting section will be self-adhesive numbers, as approved by the Service Manager's Representative, shall be used they will require the number/text to be 50mm high and coloured black, with a white square background which shall be at least 10mm greater than the number. The number shall face oncoming traffic for signs and bollards, whereas for columns, pole brackets, combi boxes and beacons they shall face the road.

All units shall have their lamps replaced no more than 3 months prior to adoption where applicable, and if required repainted to current specification.

Section 9: Additional Information

Signs, awnings, etc. overhanging the highway must have a minimum clearance to the bottom edge of 2.4m (footways) and must be no closer than 450mm to the carriageway edge.

Permission to oversail the highway must be obtained by contacting the Highways department.

Carriageways will require specific permissions from the Highways department and generally have a 5.2m clearance.

Roots or overhanging vegetation must not cause damage or obstruction to the highway.

Planting schemes (especially those with trees) must allow sufficient protection from roots damage, as well as sufficient clearance from the highway that the seasonal vegetation growth will not become an issue or obstruct required visibility splays.

Section 10: Conditions and Reasons for Refusal

10.1: Standard Conditions

Where it is determined that an application does not lead to a highway safety concern, it may be necessary to condition those elements that should be secured in perpetuity.

These are likely to be visibility, layout, parking, turning, loading, etc.

Where alterations are required to any areas of public highways, an agreement under Section 287 of the Highways Act 1980 may be required to be entered into.

10.2: Reasons for Refusal

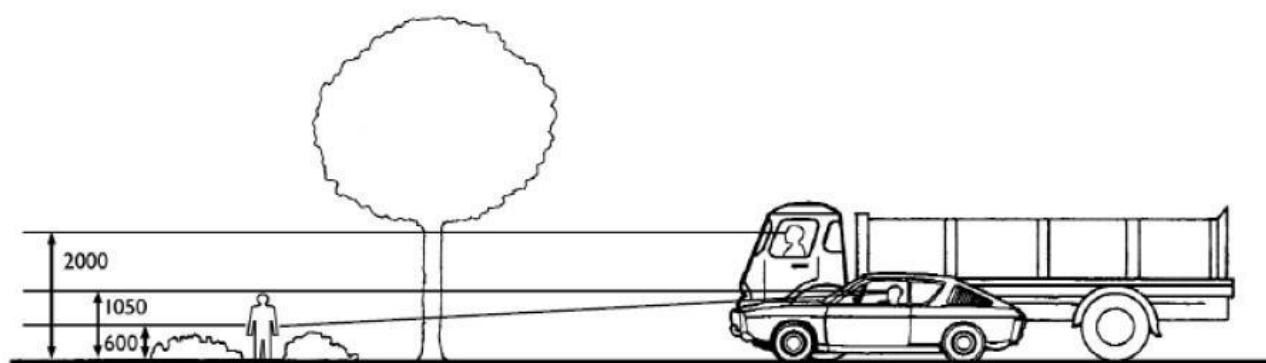
Where the requirements of this Standing Advice cannot be satisfied, it may be necessary to object to the planning application on the grounds of highway safety, which may result in refusal of the application.

Appendix 1: Visibility Requirements

The required vertical visibility envelope is defined below.

To enable drivers to see a potential hazard in time to slow down or stop comfortably before reaching it, it is necessary to consider the driver's line of vision (in both the vertical and horizontal planes) and the stopping distance of the vehicle.

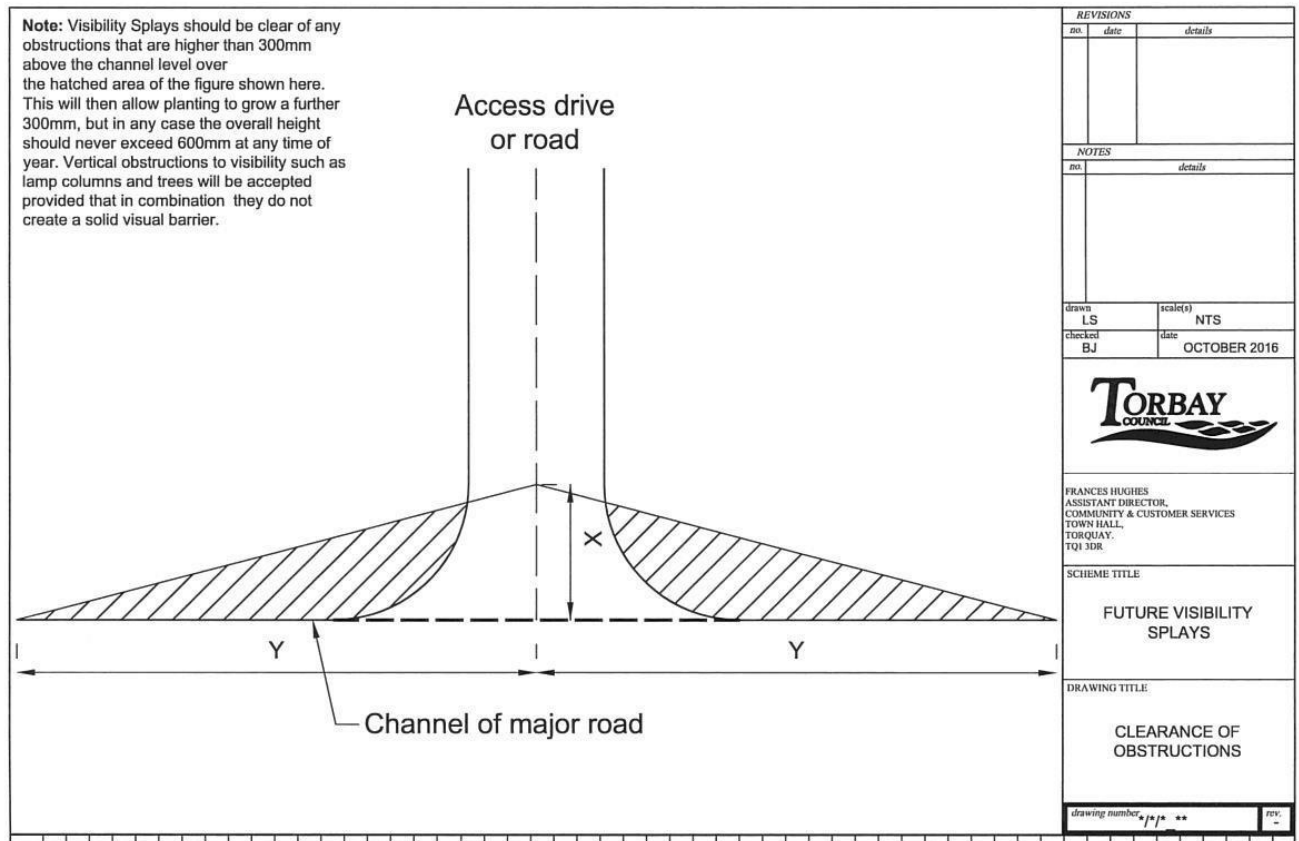
As general guidance, it is suggested that a height of 600mm be taken as the point above which unobstructed visibility should be provided wherever the potential exists for conflicts between motorists and young children. This will apply along all sections of residential roads and is especially important where shared surface roads are used.



	Major road type															
	Strategic routes					Roads within residential estates										
Design speed (kph)	100	85	70	60	48	16	20	24	25	30	32	40	45	48	50	60
Design speed (mph)	62	53	44	37	30	10	12	15	16	19	20	25	28	30	31	37
X distance (m) (1)	2.4	2.4	2.4	2.4	2.4	2.4	2.4	2.4	2.4	2.4	2.4	2.4	2.4	2.4	2.4	2.4
Y distance (m) (2)	215	160	120	90	70	11	14	17	18	23	25	33	39	43	45	59

Notes

1. The X distance will be increased in special circumstance as required by the Engineer, e.g., where greater capacity is required, or where specific safety issues are apparent.
2. Speed readings can determine the requirements for 85th percentile speeds therefore the Y distance can be reduced if lower speeds can be proven.
3. For higher speed roads and strategic routes, i.e., with an 85th percentile speed over 40mph, it may be appropriate to use longer SSDs, (Y Distance) as set out in the (Design Manual for Roads and Bridges).



For further details, please refer to the Highway Design Guide.

	Major road type															
	Strategic routes					Roads within residential estates										
Design speed (kph)	100	85	70	60	48	16	20	24	25	30	32	40	45	48	50	60
Design speed (mph)	62	53	44	37	30	10	12	15	16	19	20	25	28	30	31	37
X distance (m) (1)	2.4	2.4	2.4	2.4	2.4	2.4	2.4	2.4	2.4	2.4	2.4	2.4	2.4	2.4	2.4	2.4
Y distance (m) (2)	215	160	120	90	70	11	14	17	18	23	25	33	39	43	45	59

Appendix 2: Guidance for new vehicle crossing/parking for a private driveway

Please also see Torbay Local Plan 2012 to 2030, Appendix F: Car Parking Requirements.⁷

To apply for a vehicular access, please complete the online application form.⁸

Before submitting your application, you are advised to check your proposal against the following criteria:

1: Is there enough space in your garden?

No part of a vehicle parked within your property may project onto or over the highway. The vehicle access crossing may not be used as a parking area, and no part of it is exempted for the purpose of footway parking.

In order to comply, the parking space must be:

- at least 5.5m long, where the parking area is between the back of the pavement or property boundary (e.g., the face of any wall, fence, or hedge) and the front of your building, **or**
- at least 6m long, where the parking area is in front of a garage or door where adequate means of escape needs to be provided, e.g., a front/back door, escape window, etc.

The parking space must be at a right angle to the highway, with the vehicle able to enter and exit the property in one movement. There must be no adjusting movements of a vehicle made on the highway when entering or exiting the property.

Approval to construct and use a vehicle crossing is only given to allow vehicles to cross from highway to private property and back, and for those vehicles to be parked wholly off the highway and not overhanging the highway at all. (The highway includes carriageway, footway, and verge.)

Property owners/occupiers will be notified if a breach of this condition occurs; if it continues after notification, Torbay Council reserves the right to remove the vehicle access with immediate effect by reinstating the highway to its original state and recharging costs of any related works to the owner and/or occupier as appropriate.

The policy of the Highway Authority in relation to minimum depths can change over time. This may mean that properties in your road have a vehicle access crossing that does not comply with current criteria and appears in all respects to be very similar to your own proposals. Nevertheless, you will need to comply with the latest standards, and the fact that someone else may have a shorter parking space will not be considered when assessing your proposals.

⁷ <https://www.torbay.gov.uk/council/policies/planning-policies/local-plan/local-plan/>

⁸ www.torbay.gov.uk/dropped-kerbs

2: Is the access wide enough?

For a single-width access serving no more than one dwelling, a minimum width of 3.2m is required through the entire parking bay. This dimension is the absolute minimum and cannot be reduced. There must be no obstructions in this area (e.g., a bay window or a tree), and this must be considered when assessing your proposals. This dimension also applies where vehicle parking is adjacent to a solid obstruction, such as a retaining wall.

Additional width of access or parking space is required between highway and any bins or cycle storage.

Dual parking spaces will also require 5.5m length by 5.6m width (if not obstruction adjacent walls).

Where properties have shared or adjoining parking spaces, sufficient access/egress for vehicles and any waste/cycle storage should be provided as 6.4m wide (i.e., 2 x 3.2m for each property).

Please see additional Appendix 3 diagrams for further information.

3: Separate entrance and exit

The general rule is that increasing the number of points on a highway where vehicles turn increases the potential for traffic conflict. Therefore, applications for two access crossings to a single property (or a second access point if one already exists) will not normally be approved for domestic dwellings, unless there is strong evidence that it will add significantly to highway safety.

For such applications to be considered, the applicant will need to show the following:

- How a second access will add to the safety of the access arrangements
- Why such added safety cannot be achieved from a single access, or by improving or repositioning an existing access

4: Distance from road junctions

If the location of the proposed crossing is closer than 10m to a road junction, it would create a serious hazard and the application will be refused. This dimension may be increased to 15m on major roads or near busy junctions.

If the property is situated directly on the junction of two roads, it will generally be safer to situate the access on the more minor of the two roads. Accordingly, you may be asked to amend your proposals to comply with this requirement.

5: Visibility requirements

Will you be able to see pedestrians and vehicles clearly enough to drive out of the driveway without causing danger to yourself or other road users?

Probably the most important contribution to road safety is the provision of adequate visibility. This enables road users to see a potential hazard in time to slow down or stop comfortably before reaching it.

The application will be refused if the crossing does not meet visibility requirements set within published industry standards. Greater visibility may be required on faster, busier roads.

Torbay Council considers each request on its own merits.

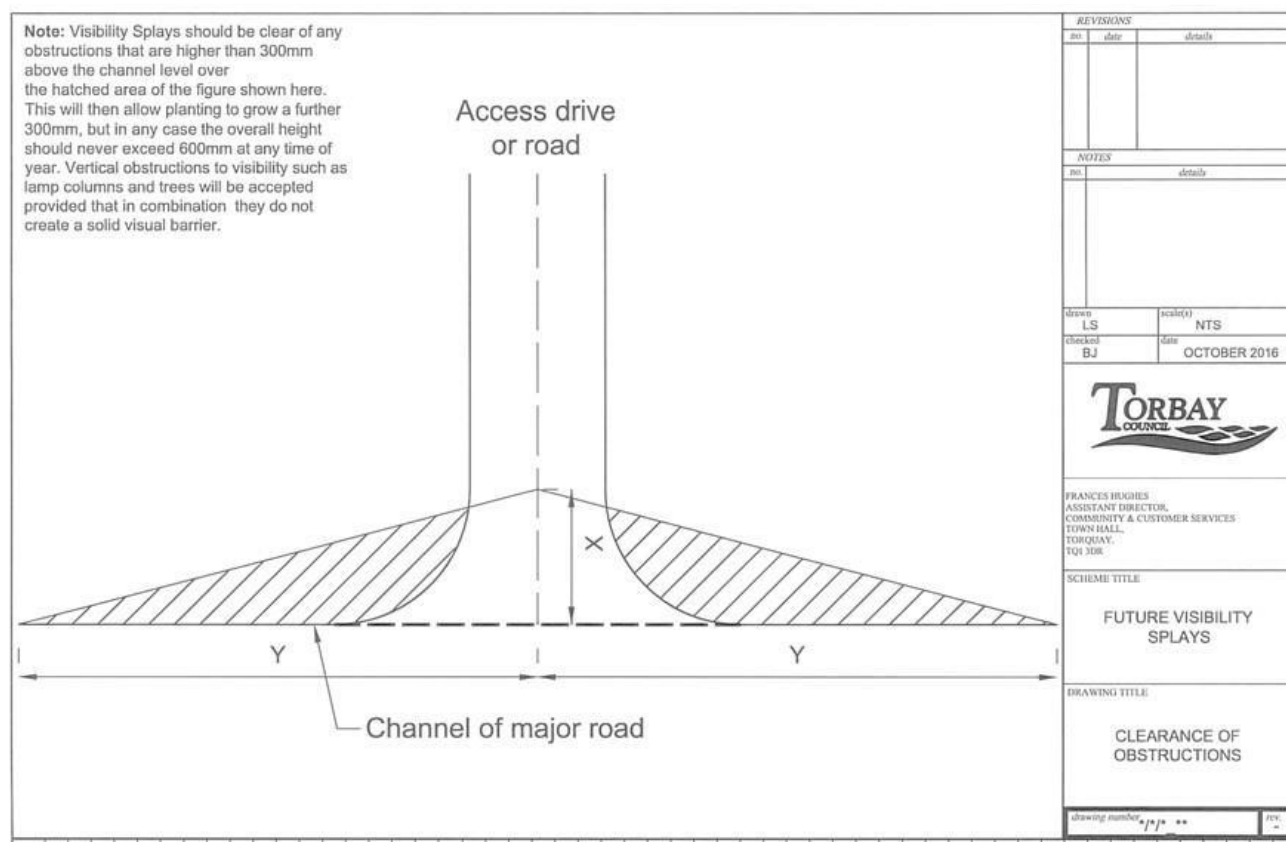
Consideration will be given to the driver's line of vision in both the vertical and horizontal planes.

In order to determine the exact level of visibility required, a site inspection will be needed from an experienced officer.

Sight lines are defined by the visibility setback (the X dimension) and the forward visibility required to enable a vehicle to stop safely (the Y dimension). Where it is in the applicant's control, the following minimum requirements should be satisfied:

There should be no obstruction to visibility above the height of 0.85m over footway level. If the footway is likely to be used by small children, this height should be reduced to 0.6m

Where all or part of the splay lies across land outside of the applicant's control, a relaxation to this requirement may be considered, considering the amount of pedestrian activity along the footway and the width of the footway.



6: Shared access

Where the occupiers of two adjacent properties share a driveway and wish to build a double width crossing to serve the two sites, one occupier should act on behalf of both parties.

7: Drainage

The parking area within your property must be built so that water does not drain from it across the highway. Suitable drainage must be provided within the boundaries of your property.

8: Lamp columns and street furniture

All street furniture, lamp columns, and utility plant needs to be situated at least 1.5m from the location of the top of the ramped kerb of the proposed crossover. Any street furniture, lamp columns and utility plant within 1.5m must be relocated at the expense of the applicant.

9: Trees and root protection area calculation

Applications requiring the removal of a highway tree are likely to be refused. To avoid damage to the tree roots or rooting environment, a minimum root protection area (RPA) needs to be left undisturbed around each tree.

The following calculation will provide the radius of the RPA which should be used as the minimum distance between a tree and any construction. In certain cases, it may be possible to reduce the distance based on advice from an arboriculturist.

RPA radius (m) = Stem diameter (mm, measured at 1.5m above ground level) x 0.012

10: Gates

If gates are to be fitted across the vehicle entrance to your property, they must not open outwards across the highway. Additionally, on busy roads they must be set back at least 6m from the edge of the carriageway to allow the driver to park clear of the highway whilst opening the gates. Sufficient space must exist within the site for the gates to close.

11: Ownership of the property

If you are not the freehold owner of the property, you will need to obtain the permission of the owner.

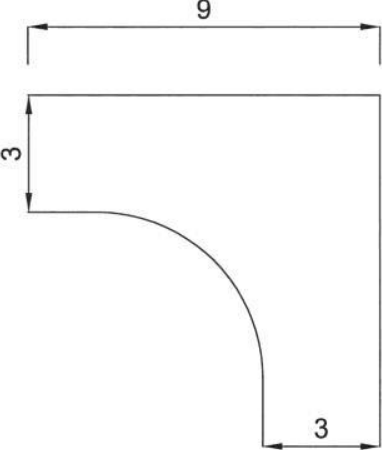

12: Footway crossover in the Public Highway

In most instances the application will be successful; however, if your proposed crossing puts other road users at risk or seriously interferes with the free flow of traffic on a busy road, it may be turned down. Notwithstanding the guidelines above, in certain circumstances it will be necessary for the Council, as the Highway Authority, to refuse to allow the construction of a footway crossing to your premises.

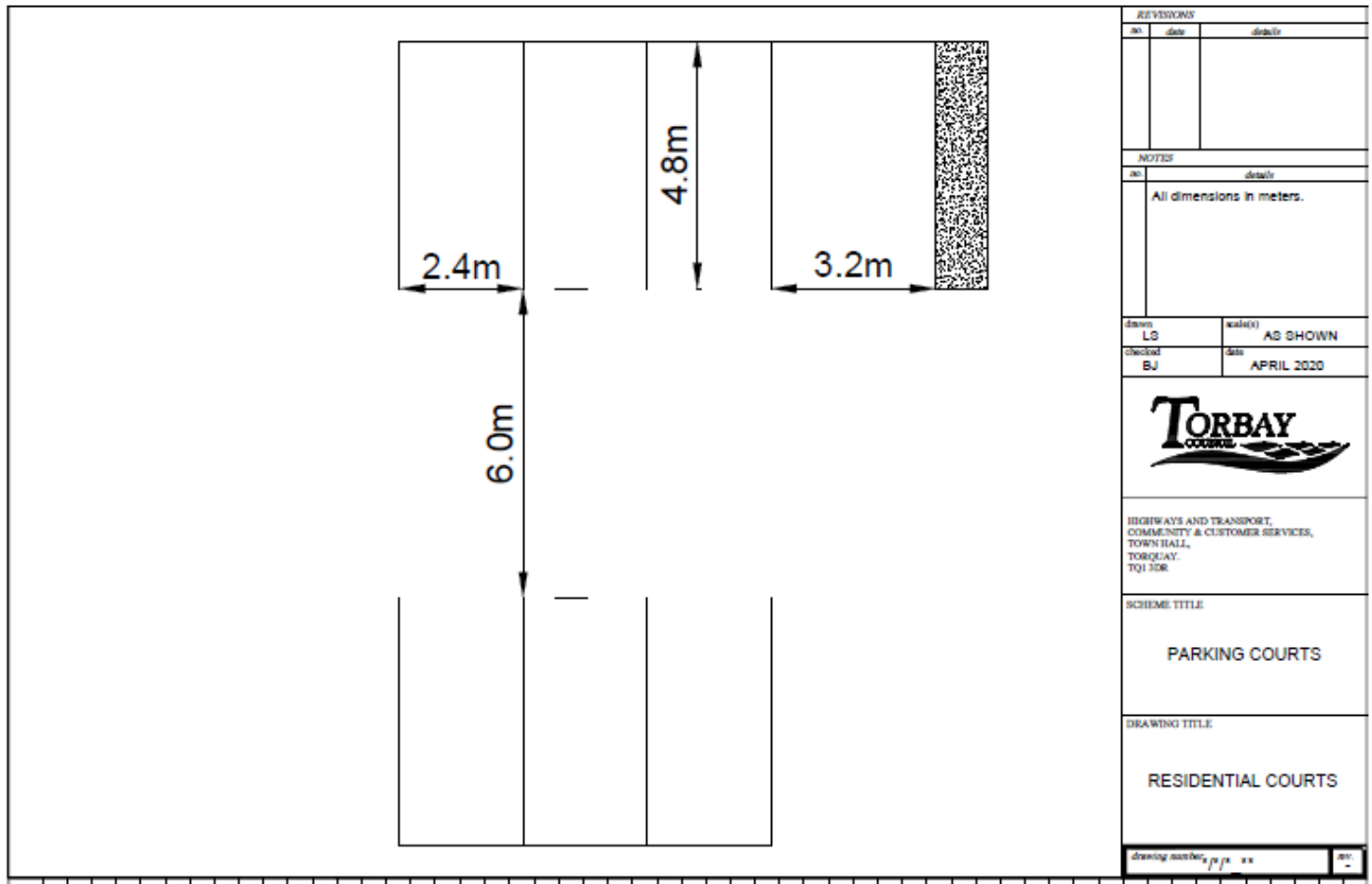
Appendix 3: General Turning and Manoeuvring Requirements

Turning facilities when required by Engineer. Example: driveway for single car parking and manoeuvring space (any additional car would require further space).

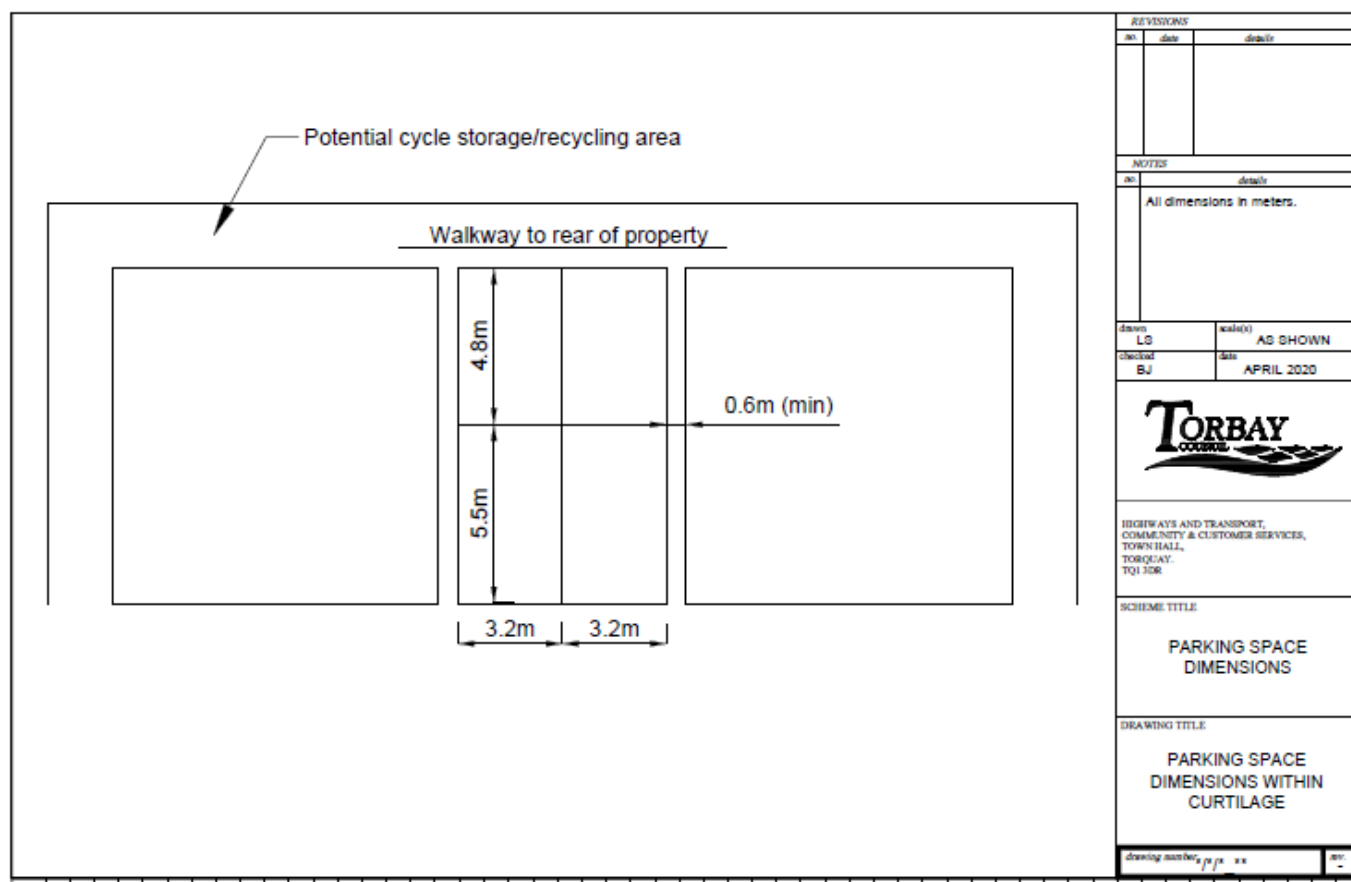
Please also refer to the Highways Design Guide.

		REVISIONS	
		no.	date
		details	
NOTES		no.	details
		All dimensions in meters.	
drawn	LS	scale(s)	AS SHOWN
checked	BJ	date	OCTOBER 2016
			
FRANCES HUGHES ASSISTANT DIRECTOR, COMMUNITY & CUSTOMER SERVICES TOWN HALL, TORQUAY, TQ1 3DR			
SCHEME TITLE TURNING FACILITIES			
DRAWING TITLE TURNING FACILITIES			
drawing number: 1/1/16 **			rev.
			-

Parking court requirements. Note: additional space is required where parking spaces abut a solid obstruction such as a wall.



Parking diagram layout for shared dual parking spaces. Additional 600mm width (3.2m) additional length for 'second' space (5.5m) to back of footway. Circulation space for waste/recycling and walkways may also be required.



Design Manual for Roads and Bridges (DMRB)

www.dft.gov.uk/ha/standards/dmr/b/vol6/section2/td4295.pdf

Manual for Streets (MfS)

www.gov.uk/government/publications/manual-for-streets

Guidance on Transport Assessments

www.gov.uk/government/publications/guidance-on-transport-assessment

Local Transport Plan – LTP3

Appendix 4: Highway Issues General Checklist

What are the main highway issues that I will need to consider as part of the design of my development?

Is the access to the development safe for all road users, ensuring a safe and suitable access for all people to the development?	
In more detail:	
Check the point of access – Local Strategic Highway Network and A, B, and C class roads will be subject to more stringent access restrictions in relation to the principle of any new access/increased usage of an access, highway safety, etc.	
Check that any visibility splays meet the required standard (see Appendix 2 and the Highways Design Guide for further guidance). This will vary with the class and speed on the road.	
Check any pedestrian access from the development. Any scheme should always try to link all private footpaths with the adjacent adopted footway.	
Check that you have met the requirements for cycle parking and cycle storage. All dwellings should be provided with covered, secure storage for cycles. The provision of a garage (subject to minimum internal dimensions) may be sufficient to provide an adequate facility.	
Check that the car parking provision on developments meets the current standards (Local Plan Policy TA3). Note: Residential dwellings (two spaces per property) and flats (one space per property) plus visitor parking (generally set at 0.5 per property) must all meet the minimum dimensions.	
Check that surface water runoff from paved areas does not discharge onto the highway.	
Check that the development has an access with sufficient width and turning space required.	
Consider any gates or lighting, which should not interfere or affect safety of highway users.	

Appendix 5: Local Plan and Neighbourhood Plan Policies

Please note, this is not an exhaustive list but rather highlights some key policies.

Please refer to the online documents.^{9, 10, 11, 12}

Please note that Local Transport Note 1/20 provides guidance and good practice for the design of cycle infrastructure in support of the Cycling and Walking Investment Strategy. The scope of this document is limited to design matters. Further reading on related matters, helpful tools and advice on procedural issues is included in the Appendices.

LTN 1/20 replaces previous guidance on cycle infrastructure design provided by LTN 2/08, and accordingly, LTN 2/08 is withdrawn. LTN 1/20 also replaces LTN 1/12: Shared Use Routes for Pedestrians and Cyclists, and accordingly, LTN 1/12 is now withdrawn.

Local Plan – Policy TA1: Transport and Accessibility

The Council is seeking to develop a sustainable and high-quality transportation system which makes sustainable travel the first choice when travelling, thereby meeting the accessibility needs of everyone and promoting Torbay's economic competitiveness, whilst reducing the need to travel and its environmental impact.

This will be achieved through:

1. Promoting development in locations that are easily accessible and safely reached by foot, cycle, public transport, other sustainable transport, or car
2. Ensuring that the most sustainable and environmentally acceptable modes of transport are promoted as an integral part of developments, having regard to the following hierarchy of sustainability:
 - a. walking.
 - b. cycling.
 - c. public transport.
 - d. car sharing.
 - e. low/ultra-low emission vehicles; and
 - f. private (high emission) transport.
3. Improving road safety, quality of life and equality of access for all, minimising conflict between road users and prioritising the transport hierarchy.
4. Ensuring that development is designed so that the use of cars is reduced wherever possible and residents have adequate access to employment, retail and community facilities within safe walking and cycling distance and via close proximity to bus stops, served by frequent bus services. Layouts should contribute to a connected network of footpaths, cycle routes and green infrastructure identified in the Torbay Green Infrastructure Delivery Plan.

⁹ <https://www.torbay.gov.uk/council/policies/planning-policies/local-plan/local-plan/>

¹⁰ <https://www.torbay.gov.uk/council/policies/planning-policies/neighbourhood-plans/torquay-np/>

¹¹ <https://www.torbay.gov.uk/media/12972/paignton-neighbourhood-plan.pdf>

¹² <https://www.torbay.gov.uk/council/policies/planning-policies/neighbourhood-plans/brixham-np/>

Employment proposals should seek to maximise the opportunities for sustainable transport of freight.

5. Incorporating, in new development, appropriate levels of car and cycle parking (see Policy TA3) that is well-designed, integrates with other public space uses and does not dominate the built environment.
6. Reducing the impact of signage and transport infrastructure within the street scene, to avoid proliferation of unnecessary clutter or harm to the historic features.
7. Minimising the effect of development upon Air Quality Management Areas (AQMAs).

Local Plan – Policy TA2: Development Access

All development proposals should make appropriate provision for works and/or contributions to ensure an adequate level of accessibility and safety, and to satisfy the transport needs of the development. Consideration will be given to the hierarchy of sustainable transport and the need to create a connected network of green infrastructure identified in the Torbay Green Infrastructure Delivery Plan. All such works shall seek to maintain or enhance the physical features that contribute to the character of the area.

Accessing the highway network

Schemes which require new access to/from the highway network will be supported where they:

1. Provide vehicular and pedestrian access to a safe standard, including a satisfactory standard of visibility
2. Maintain an acceptable network capacity or provide suitable mitigation for any negative impact on capacity
3. Contain high quality provision for sustainable modes of transport, proportional to the scale and type of development
4. Enhance public and/or community transport, cycling and pedestrian infrastructure, proportional to the scale and type of development
5. Are essential to access the schemes and can demonstrate significant environmental, safety or economic benefits
6. Do not impact on the wider network, by causing/adding to congestion for example
7. Provide for safe turning/manoeuvring of vehicles within the site, particularly for commercial development

In particular, new access points to the Major Road Network and the District Distributor Road Network (shown on the Policies Map) will not be permitted where there is an impact on road safety, or severe impact (including cumulative effects) on the function and operational efficiency of the Networks.

For major developments

A good standard of access for walking, cycling, public and private transport should be provided in major development schemes. This will include measures for emergency service vehicles, waste collection vehicles and public transport vehicles to access the site in a way that would not disrupt the service they provide. Additionally, secure covered bicycle parking and changing facilities (e.g., in commercial developments) should always be included. Consideration must be given to the need to make appropriate provision of facilities for disabled persons, such as suitable levels, signage, and parking bays.

A Travel Plan is required for all major developments likely to have significant transport implications, setting out how at least 30% of the potential users can gain access by foot, cycle, or public transport, and how this will be monitored.

Local Plan – Policy TA3: Parking Requirements

The Council will require appropriate provision of car, commercial vehicle, and cycle parking spaces in all new development. The loss of on-street or public parking provision will be a material consideration in planning applications, with additional weight being given to loss of provision in those areas where there is congestion and/or heavy use of public or on-street spaces.

Extensions to, or sub-division of, houses or flats must not result in the net loss of parking provision to below the standards set out below, unless in town centre locations with good travel infrastructure, where alternatives may be considered.

Development proposals will be expected to meet the guideline requirements as set out in Appendix F.¹³

Torquay Neighbourhood Plan – Policy TH9: Parking Facilities

All housing developments must meet the guideline parking requirements contained in the Local Plan unless it can be shown that there is not likely to be an increase in on-street parking arising from the development or, the development is within the town centre and an easy walk of a public car park which will be available to residents for the foreseeable future.

In addition, any application for new residential units or additional bedrooms to existing units must be assessed for their impact on parking requirements and proposals shall identify suitable and appropriate parking arrangements so that parking will not add to the potential for antisocial behaviour or conflict within the community. New major developments must contribute to better pedestrian/cycle links where possible and encourage modal shift towards active travel.

Paignton Neighbourhood Plan – Policy PNP 1(d): Residential Development

New residential development should aim to achieve where appropriate and subject to viability:

- i) the highest standards of sustainable construction such as Passivhaus, EnerPHit, and Lifetime Homes standards, subject to meeting other policy and design considerations as defined
- ii) Homezone Objectives should be followed where on-street parking provision is proposed
- iii) space for solid waste storage within each curtilage, in seagull proof structures sufficient to accommodate two wheelie bins of 240 litre size
- iv) for each new dwelling, purpose designed cycle parking space that is covered, safe and convenient. Where cycle parking and bin storage are located within a garage, demonstrate that the garage will be of sufficient size to house at least 2 cycles in addition to car parking
- v) safe wheelchair access and mobility scooter circulation throughout the site layout

¹³ See Torbay Local Plan, Appendix F, pages 292-298.

See also **Policy DE1 Design** and **Policy DE3 Development amenity**.

Brixham Neighbourhood Plan – Policy T1: Linking of New Developments to Travel Improvements

- T1.1 All developments should include safe walking and cycling access.
- T1.2 Developments should provide a travel plan proportionate in breadth and detail to the size and complexity of any development proposal to address the impact of travel associated with the development. This should include information on how the carbon footprint from travel has been minimised and the health and well-being of travellers (in particular commuters) maximised.
- T1.3 All development should seek to minimise commuting distances and seek to include improvements to the safety of pedestrians and cyclists.

Brixham Neighbourhood Plan – Policy BH8: Access to New Dwellings

Access to new developments should comply with the relevant adopted standards.

Appendix 6: Torbay Council Classified Roads (March 2020)

Road number	Street name	Junction section	Type	Postcode prefix	Town	Class type
A3022	Eugene Road	(Paris Road - Seaway Road Rear)	Main Distributor	TQ3 2	Paignton	A Class
A3022	Eugene Road	(Seaway Road Rear - Seaway Road Rear 12)	Main Distributor	TQ3 2	Paignton	A Class
A3022	Eugene Road	(Seaway Road Rear 12 - Seaway Road)	Main Distributor	TQ3 2	Paignton	A Class
A3022	Great Western Road	(Dartmouth Road - Station Lane)	Main Distributor	TQ4 5	Paignton	A Class
A3022	Great Western Road	(Station Lane - Torbay Road)	Main Distributor	TQ4 5	Paignton	A Class
A3022	Hyde Road	(Victoria Street - Victoria Street Rear)	Main Distributor	TQ4 5	Paignton	A Class
A3022	Hyde Road	(Victoria Street Rear - Hyde Road Adj 71)	Main Distributor	TQ4 5	Paignton	A Class
A3022	Hyde Road	(Hyde Road Adj 71 - Dendy Road)	Main Distributor	TQ4 5	Paignton	A Class
A3022	Hyde Road	(Dendy Road - Hyde Road Rear)	Main Distributor	TQ4 5	Paignton	A Class
A3022	Hyde Road	(Hyde Road Rear - Church Street)	Main Distributor	TQ4 5	Paignton	A Class
A3022	Paris Road	(Torquay Road - Eugene Road)	Main Distributor	TQ3 2	Paignton	A Class
A3022	Seaway Road	(Eugene Road - Seaway Gardens)	Main Distributor	TQ3 2	Paignton	A Class
A3022	Seaway Road	(Seaway Gardens - Headland Park Road)	Main Distributor	TQ3 2	Paignton	A Class
A3022	Torquay Road	(Palace Avenue - Victoria Street)	Main Distributor	TQ4 5	Paignton	A Class
A3022	Torquay Road	(Victoria Street - Bishops Place)	Main Distributor	TQ4 5	Paignton	A Class
A3022	Torquay Road	(Bishops Place - Gerston Place)	Main Distributor	TQ4 5	Paignton	A Class
A3022	Torquay Road	(Gerston Place - Church Street)	Main Distributor	TQ4 5	Paignton	A Class
A3022	Torquay Road	(Church Street - Littlegate Road)	Main Distributor	TQ4 5	Paignton	A Class
A3022	Torquay Road	(Littlegate Road - Cecil Road)	Main Distributor	TQ3 2	Paignton	A Class
A3022	Torquay Road	(Cecil Road - Courtland Road)	Main Distributor	TQ3 2	Paignton	A Class
A3022	Torquay Road	(Courtland Road - Cadwell Road)	Main Distributor	TQ3 2	Paignton	A Class
A3022	Torquay Road	(Cadwell Road - Higher Polsham Road)	Main Distributor	TQ3 2	Paignton	A Class
A3022	Torquay Road	(Higher Polsham Road - Torquay Road Adj 134)	Main Distributor	TQ3 2	Paignton	A Class
A3022	Torquay Road	(Torquay Road Adj 134 - 148)	Main Distributor	TQ3 2	Paignton	A Class
A3022	Torquay Road	(Torquay Road Adj 148 - 160a)	Main Distributor	TQ3 2	Paignton	A Class
A3022	Torquay Road	(Torquay Road Adj 160a - Kings Road)	Main Distributor	TQ3 2	Paignton	A Class
A3022	Torquay Road	(Kings Road - Oldway Mansion Entrance)	Main Distributor	TQ3 2	Paignton	A Class
A3022	Torquay Road	(Oldway Mansion Entrance - Brookfield Close)	Main Distributor	TQ3 2	Paignton	A Class
A3022	Torquay Road	(Brookfield Close - Upper Manor Road)	Main Distributor	TQ3 2	Paignton	A Class
A3022	Torquay Road	(Upper Manor Road - Langs Road)	Main Distributor	TQ3 2	Paignton	A Class
A3022	Torquay Road	(Langs Road - Paris Road)	Main Distributor	TQ3 2	Paignton	A Class
A3022	Torquay Road	(Paris Road - Old Torquay Road)	Main Distributor	TQ3 2	Paignton	A Class
A3022	Torquay Road	(Old Torquay Road - Headland Park Road)	Main Distributor	TQ3 2	Paignton	A Class
A3022	Torquay Road	(Headland Park Road - Fortescue Road)	Main Distributor	TQ3 2	Paignton	A Class
A3022	Torquay Road	(Fortescue Road - Orient Road)	Main Distributor	TQ3 2	Paignton	A Class
A3022	Torquay Road	(Orient Road - Cedar Road)	Main Distributor	TQ3 2	Paignton	A Class
A3022	Torquay Road	(Cedar Road - Locarno Avenue)	Main Distributor	TQ3 2	Paignton	A Class
A3022	Torquay Road	(Locarno Avenue - St Pauls Road)	Main Distributor	TQ3 2	Paignton	A Class
A3022	Torquay Road	(St Pauls Road - Bay View)	Main Distributor	TQ3 2	Paignton	A Class
A3022	Torquay Road	(Bay View - Tarraway Road)	Main Distributor	TQ3 2	Paignton	A Class
A3022	Torquay Road	(Tarraway Road - Hollacombe Lane)	Main Distributor	TQ3 2	Paignton	A Class
A3022	Victoria Street	(Great Western Road - Hyde Road)	Main Distributor	TQ4 5	Paignton	A Class
A3022	Brixham Road	(Dartmouth Road Windy Corner - Hunters Tor Drive)	Main Distributor	TQ4 7	Paignton	A Class
A3022	Brixham Road	(Hunters Tor Drive - Kingsway Avenue)	Main Distributor	TQ4 7	Paignton	A Class
A3022	Brixham Road	(Kingsway Avenue - Brixham Road adj Garage)	Main Distributor	TQ4 7	Paignton	A Class

Road number	Street name	Junction section	Type	Postcode prefix	Town	Class type
A3022	Brixham Road	(Brixham Road adj Garage - Long Road)	Main Distributor	TQ4 7	Paignton	A Class
A3022	Brixham Road	(Long Road - Brixham Road adj Applegarth House)	Main Distributor	TQ4 7	Paignton	A Class
A3022	Brixham Road	(Brixham Road Adj Applegarth House - Goodrington Road)	Main Distributor	TQ4 7	Paignton	Dual
A3022	Brixham Road	(Goodrington Road - Brixham Road)	Main Distributor	TQ4 7	Paignton	Dual
A3022	Brixham Road	(Brixham Road adj Applegarth House - Roselands Drive)	Main Distributor	TQ4 7	Paignton	A Class
A3022	Brixham Road	(Roselands Drive - Yalberton Road)	Main Distributor	TQ4 7	Paignton	A Class
A3022	Brixham Road	(Yalberton Road - Roselands Drive)	Main Distributor	TQ4 7	Paignton	A Class
A3022	Brixham Road	(Roselands Drive - Borough Road)	Main Distributor	TQ4 7	Paignton	A Class
A3022	Brixham Road	(Borough Road - Batterways Road)	Main Distributor	TQ4 7	Paignton	A Class
A3022	Brixham Road	(Batterways Road - Longstone Road)	Main Distributor	TQ4 7	Paignton	A Class
A3022	Brixham Road	(Longstone Road - Totnes Road)	Main Distributor	TQ4 7	Paignton	A Class
A3022	Dartmouth Road	(Brixham Road - Kennels Road)	Main Distributor	TQ5 0	Brixham	Dual
A3022	Dartmouth Road	(Brixham Road - Dartmouth Road)	Main Distributor	TQ5 0	Brixham	A Class
A3022	Dartmouth Road	(Dartmouth Road - Bridge Road)	Main Distributor	TQ5 0	Brixham	A Class
A3022	Dartmouth Road	(Bridge Road - Greenway Road)	Main Distributor	TQ5 0	Brixham	A Class
A3022	Dartmouth Road	(Greenway Road - Warborough Road)	Main Distributor	TQ5 0	Brixham	A Class
A3022	Dartmouth Road	(Warborough Road - Manor Vale Road)	Main Distributor	TQ5 0	Brixham	A Class
A3022	Dartmouth Road	(Manor Vale Road - Bascombe Road Slip Road)	Main Distributor	TQ5 0	Brixham	A Class
A3022	Dartmouth Road	(Bascombe Road Slip Road - Bascombe Road)	Main Distributor	TQ5 0	Brixham	A Class
A3022	Dartmouth Road	(Bascombe Road - Langdon Lane)	Main Distributor	TQ5 0	Brixham	A Class
A3022	Dartmouth Road	(Langdon Lane - Brixham Road)	Main Distributor	TQ4 6	Brixham	A Class
A3022	Dartmouth Road	(Great Western Road - Station Lane)	Main Distributor	TQ4 5	Paignton	A Class
A3022	Dartmouth Road	(Station Lane - Commercial Road)	Main Distributor	TQ4 5	Paignton	A Class
A3022	Dartmouth Road	(Commercial Road - Totnes Road)	Main Distributor	TQ4 5	Paignton	A Class
A3022	Avenue Road	(Newton Road - Cleveland Road)	Main Distributor	TQ2 5	Torquay	A Class
A3022	Avenue Road	(Cleveland Road - Tor Park Road)	Main Distributor	TQ2 5	Torquay	A Class
A3022	Avenue Road	(Tor Park Road - Rillage Lane)	Main Distributor	TQ2 5	Torquay	A Class
A3022	Avenue Road	(Rillage Lane - Crownhill Park)	Main Distributor	TQ2 5	Torquay	A Class
A3022	Avenue Road	(Crownhill Park - Sandford Road)	Main Distributor	TQ2 5	Torquay	A Class
A3022	Avenue Road	(Sandford Road - Old Mill Road)	Main Distributor	TQ2 5	Torquay	A Class
A3022	Avenue Road	(Old Mill Road - Bampfylde Road)	Main Distributor	TQ2 5	Torquay	A Class
A3022	Avenue Road	(Bampfylde Road - Bath Lane)	Main Distributor	TQ2 5	Torquay	A Class
A3022	Avenue Road	(Bath Lane - Walnut Road)	Main Distributor	TQ2 5	Torquay	A Class
A3022	Falkland Road	(Rathmore Road - Walnut Road)	Main Distributor	TQ2 6	Torquay	A Class
A3022	Rathmore Road	(Torbay Road - Hennapyn Road)	Main Distributor	TQ2 6	Torquay	A Class
A3022	Rathmore Road	(Hennapyn Road - Falkland Road)	Main Distributor	TQ2 6	Torquay	A Class
A3022	The Kings Drive	(Falkland Road - Torbay Road)	Main Distributor	TQ2 6	Torquay	A Class
A3022	Torbay Road	(Gas Works - Wheatridge Lane)	Main Distributor	TQ2 6	Torquay	A Class
A3022	Torbay Road	(Wheatridge Lane - Headland Road)	Main Distributor	TQ2 6	Torquay	A Class
A3022	Torbay Road	(Headland Road - Cliff Road)	Main Distributor	TQ2 6	Torquay	A Class
A3022	Torbay Road	(Cliff Road - Cockington Lane)	Main Distributor	TQ2 6	Torquay	A Class
A3022	Torbay Road	(Cockington Lane - Seaway Lane)	Main Distributor	TQ2 6	Torquay	A Class
A3022	Torbay Road	(Seaway Lane - Rathmore Road)	Main Distributor	TQ2 6	Torquay	A Class
A3022	Torbay Road	(Rathmore Road - The Kings Drive)	Main Distributor	TQ2 6	Torquay	A Class
A3022	Torbay Road	(The Kings Drive - Rathmore Road)	Main Distributor	TQ2 6	Torquay	Dual
A3022	New Road	(Laywell Road - Monksbridge Road)	Main Distributor	TQ5 0	Brixham	A Class
A3022	New Road	(Monksbridge Road - Churston Way)	Main Distributor	TQ5 8	Brixham	A Class
A3022	New Road	(Churston Way - Beverley Rise)	Main Distributor	TQ5 8	Brixham	A Class
A3022	New Road	(Beverley Rise - Holwell Road)	Main Distributor	TQ5 8	Brixham	A Class
A3022	New Road	(Holwell Road - Cudhill Road)	Main Distributor	TQ5 8	Brixham	A Class
A3022	New Road	(Cudhill Road - Penpethy Road)	Main Distributor	TQ5 8	Brixham	A Class
A3022	New Road	(Penpethy Road - Lower Manor Road)	Main Distributor	TQ5 8	Brixham	A Class

Road number	Street name	Junction section	Type	Postcode prefix	Town	Class type
A3022	New Road	(Lower Manor Road - Parkham Road)	Main Distributor	TQ5 8	Brixham	A Class
A3022	New Road	(Parkham Road - Bolton Street)	Main Distributor	TQ5 8	Brixham	A Class
A3022	Newton Road	(Newton Road - Lowe's Bridge)	Main Distributor	TQ2 7	Torquay	Dual
A3022	Newton Road	(Hele Road - Newton Road Split)	Main Distributor	TQ2 7	Torquay	Dual
A3022	Newton Road	(Newton Road Split - Newton Road)	Main Distributor	TQ2 7	Torquay	A Class
A3022	Newton Road	(Newton Road - Riviera Way)	Main Distributor	TQ2 7	Torquay	A Class
A3022	Newton Road	(Newton Road Split - Woodland Road)	Main Distributor	TQ2 7	Torquay	A Class
A3022	Newton Road	(Woodland Road - Regent Close)	Main Distributor	TQ2 7	Torquay	A Class
A3022	Newton Road	(Regent Close - Old Woods Hill)	Main Distributor	TQ2 7	Torquay	A Class
A3022	Newton Road	(Old Woods Hill - Shiphay Lane)	Main Distributor	TQ2 7	Torquay	A Class
A3022	Newton Road	(Shiphay Lane - Avenue Road)	Main Distributor	TQ2 6	Torquay	A Class
A3022	Riviera Way	(Newton Road - Kingskerswell Road)	Main Distributor	TQ2 7	Torquay	Dual
A3022	Riviera Way	(Kingskerswell Road - Browns Bridge Road)	Main Distributor	TQ2 7	Torquay	Dual
A3022	Riviera Way	(Browns Bridge Road - Browns Bridge Road)	Main Distributor	TQ2 7	Torquay	Dual
A3022	Riviera Way	(Browns Bridge Road - Riviera Way)	Main Distributor	TQ2 7	Torquay	Dual
A3022	Riviera Way	(Riviera Way - Hele Road)	Main Distributor	TQ2 7	Torquay	Dual
A3022	Riviera Way	(Riviera Way - Newton Road)	Main Distributor	TQ2 7	Torquay	Dual
A3022	Riviera Way	(Hele Road - Newton Road)	Main Distributor	TQ2 7	Torquay	A Class
A3022	Riviera Way	(Hele Road - Browns Bridge Road)	Main Distributor	TQ2 7	Torquay	A Class
A3022	Riviera Way	(Kingskerswell Road - Newton Road)	Main Distributor	TQ2 7	Torquay	A Class
A3022	Totnes Road	(Kings Ash Road - Totnes Road Adj Post Office)	Main Distributor	TQ4 7	Paignton	A Class
A3022	Totnes Road	(Totnes Road rear Post Office - Batterways Road)	Main Distributor	TQ4 7	Paignton	A Class
A3022	Totnes Road	(Batterways Road - Hayes Road)	Main Distributor	TQ4 7	Paignton	A Class
A3022	Totnes Road	(Hayes Road - Totnes Road Adj 147)	Main Distributor	TQ3 3	Paignton	A Class
A3022	Totnes Road	(Totnes Road Adj 147 - Collingwood Road)	Main Distributor	TQ4 5	Paignton	A Class
A3022	Totnes Road	(Collingwood Road - Rossall Drive)	Main Distributor	TQ3 3	Paignton	A Class
A3022	Totnes Road	(Rossall Drive - Nursery Close)	Main Distributor	TQ3 3	Paignton	A Class
A3022	Totnes Road	(Nursery Close - Merritt Road)	Main Distributor	TQ3 3	Paignton	A Class
A3022	Totnes Road	(Merritt Road - The Gurneys)	Main Distributor	TQ3 3	Paignton	A Class
A3022	Totnes Road	(The Gurneys - Ebenezer Road)	Main Distributor	TQ3 3	Paignton	A Class
A3022	Totnes Road	(Ebenezer Road - Manor Terrace)	Main Distributor	TQ4 5	Paignton	A Class
A3022	Totnes Road	(Manor Terrace - Elmbank Road)	Main Distributor	TQ4 5	Paignton	A Class
A3022	Totnes Road	(Elmbank Road - Primley Park)	Main Distributor	TQ4 5	Paignton	A Class
A3022	Totnes Road	(Primley Park - Fisher Street)	Main Distributor	TQ4 5	Paignton	A Class
A3022	Totnes Road	(Fisher Street - Midvale Road)	Main Distributor	TQ4 5	Paignton	A Class
A3022	Totnes Road	(Midvale Road - Dartmouth Road)	Main Distributor	TQ4 5	Paignton	A Class
A3022	Totnes Road	(Dartmouth Road - Palace Avenue)	Main Distributor	TQ4 5	Paignton	A Class
A3022	Brixham Road	(Dartmouth Road - Dartmouth Road Slip Road)	Main Distributor	TQ5 0	Brixham	A Class
A3022	Brixham Road	(Dartmouth Road Slip Road - Elberry Lane)	Main Distributor	TQ5 0	Brixham	A Class
A3022	Brixham Road	(Elberry Lane - Alston Lane)	Main Distributor	TQ5 0	Brixham	A Class
A3022	Brixham Road	(Alston Lane - Higher Hayes Lane)	Main Distributor	TQ5 0	Brixham	A Class
A3022	Brixham Road	(Higher Hayes Lane - Laywell Road)	Main Distributor	TQ5 0	Brixham	A Class
A3022	Torquay Road	(Hollacombe Lane - Gas Works)	Main Distributor	TQ2 6	Paignton	A Class
A379	Dartmouth Road	(Kingswear Road - Alston Lane)	Main Distributor	TQ5 0	Brixham	A Class
A379	Dartmouth Road	(Alston Lane - Dartmouth Lane)	Main Distributor	TQ5 0	Brixham	A Class
A379	Dartmouth Road	(Dartmouth Lane - Widemoor Lane)	Main Distributor	TQ5 0	Brixham	A Class
A379	Dartmouth Road	(Widemoor Lane - Alston Lane)	Main Distributor	TQ5 0	Brixham	A Class
A379	Dartmouth Road	(Alston Lane - Slip Road)	Main Distributor	TQ5 0	Brixham	A Class
A379	Dartmouth Road	(Slip Road - Brixham Road)	Main Distributor	TQ5 0	Brixham	A Class
A379	Dartmouth Road	(Brixham Road - Broadsands Slip Road)	Main Distributor	TQ4 6	Brixham	A Class
A379	Dartmouth Road	(Broadsands Slip Road - Broadsands Road)	Main Distributor	TQ4 6	Brixham	A Class
A379	Dartmouth Road	(Broadsands Road - Dartmouth Road)	Main Distributor	TQ4 6	Paignton	A Class
A379	Dartmouth Road	(Dartmouth Road - Cherry Brook Drive)	Main Distributor	TQ4 7	Paignton	A Class

Road number	Street name	Junction section	Type	Postcode prefix	Town	Class type
A379	Dartmouth Road	(Cherry Brook Drive - Hookhills Grove)	Main Distributor	TQ4 6	Paignton	A Class
A379	Dartmouth Road	(Hookhills Grove - Broadsands Park Road)	Main Distributor	TQ4 6	Paignton	Dual
A379	Dartmouth Road	(Broadsands Park Road - Dartmouth Road)	Main Distributor	TQ4 7	Paignton	Dual
A379	Dartmouth Road	(Hookhills Grove - Saltern Road)	Main Distributor	TQ4 6	Paignton	A Class
A379	Dartmouth Road	(Saltern Road - Goodrington Road)	Main Distributor	TQ4 6	Paignton	A Class
A379	Dartmouth Road	(Goodrington Road - Hookhills Road)	Main Distributor	TQ4 6	Paignton	A Class
A379	Dartmouth Road	(Hookhills Road - Dartmouth Road)	Main Distributor	TQ4 6	Paignton	A Class
A379	Dartmouth Road	(Dartmouth Road - Knapp Park Road)	Main Distributor	TQ4 6	Paignton	A Class
A379	Dartmouth Road	(Knapp Park Road - Cliff Park Road)	Main Distributor	TQ4 6	Paignton	A Class
A379	Dartmouth Road	(Cliff Park Road - Barn Road)	Main Distributor	TQ4 6	Paignton	Dual
A379	Dartmouth Road	(Barn Road - Dartmouth Road)	Main Distributor	TQ4 6	Paignton	Dual
A379	Dartmouth Road	(Cliff Park Road - Louville Close)	Main Distributor	TQ4 6	Paignton	A Class
A379	Dartmouth Road	(Louville Close - Cliff Park Avenue)	Main Distributor	TQ4 6	Paignton	A Class
A379	Dartmouth Road	(Cliff Park Avenue - Dartmouth Road Pumping Station)	Main Distributor	TQ4 5	Paignton	A Class
A379	Dartmouth Road	(Dartmouth Road Pumping Station - Tanners Road)	Main Distributor	TQ4 5	Paignton	A Class
A379	Dartmouth Road	(Tanners Road - Penwill Way)	Main Distributor	TQ4 5	Paignton	A Class
A379	Dartmouth Road	(Penwill Way - Great Western Close)	Main Distributor	TQ4 5	Paignton	A Class
A379	Dartmouth Road	(Great Western Close - Clennon Rise)	Main Distributor	TQ4 5	Paignton	A Class
A379	Dartmouth Road	(Clennon Rise - Big Tree)	Main Distributor	TQ4 5	Paignton	A Class
A379	Dartmouth Road	(Big Tree - Fisher Street)	Main Distributor	TQ4 5	Paignton	A Class
A379	Dartmouth Road	(Fisher Street - Dartmouth Road Roundabout)	Main Distributor	TQ4 5	Paignton	A Class
A379	Dartmouth Road	(The Riviera - Whitstone Road)	Main Distributor	TQ4 5	Paignton	A Class
A379	Dartmouth Road	(Dartmouth Road Roundabout - Dartmouth Road Adj 79)	Main Distributor	TQ4 5	Paignton	A Class
A379	Dartmouth Road	(Dartmouth Road Adj 79 - Elmsleigh Park)	Main Distributor	TQ4 5	Paignton	A Class
A379	Dartmouth Road	(Elmsleigh Park - Elmsleigh Road)	Main Distributor	TQ4 5	Paignton	A Class
A379	Dartmouth Road	(Elmsleigh Road - Grosvenor Road)	Main Distributor	TQ4 5	Paignton	A Class
A379	Dartmouth Road	(Grosvenor Road - Curledge Street)	Main Distributor	TQ4 5	Paignton	A Class
A379	Dartmouth Road	(Curledge Street - Great Western Road)	Main Distributor	TQ4 5	Paignton	A Class
A379	Fore Street	(Manor Road - St Marychurch Road)	Main Distributor	TQ1 4	Torquay	A Class
A379	Fore Street	(St Marychurch Road - St Marychurch Road)	Main Distributor	TQ1 4	Torquay	A Class
A379	St Marychurch Road	(Fore Street - Chilcote Close)	Main Distributor	TQ1 4	Torquay	A Class
A379	St Marychurch Road	(Chilcote Close - Rowley Road)	Main Distributor	TQ1 4	Torquay	A Class
A379	St Marychurch Road	(Rowley Road - St Marychurch Road Roundabout)	Main Distributor	TQ1 4	Torquay	A Class
A379	St Marychurch Road	(St Marychurch Road - Petitor Road)	Main Distributor	TQ1 4	Torquay	A Class
A379	St Marychurch Road	(St Marychurch Road Roundabout - Teignmouth Road)	Main Distributor	TQ1 4	Torquay	A Class
A379	Babbacombe Road	(Torwood Street - Torwood Gardens Road)	Main Distributor	TQ1 1	Torquay	A Class
A379	Babbacombe Road	(Torwood Gardens Road - Museum Road)	Main Distributor	TQ1 1	Torquay	A Class
A379	Babbacombe Road	(Museum Road - Braddons Hill Road East)	Main Distributor	TQ1 1	Torquay	A Class
A379	Babbacombe Road	(Braddons Hill Road East - Old Torwood Road)	Main Distributor	TQ1 1	Torquay	A Class
A379	Babbacombe Road	(Old Torwood Road - Higher Woodfield Road)	Main Distributor	TQ1 1	Torquay	A Class
A379	Babbacombe Road	(Higher Woodfield Road - Old Torwood Road)	Main Distributor	TQ1 1	Torquay	A Class
A379	Babbacombe Road	(Old Torwood Road - Lower Warberry Road)	Main Distributor	TQ1 1	Torquay	A Class
A379	Babbacombe Road	(Lower Warberry Road - Acadia Road)	Main Distributor	TQ1 2	Torquay	A Class
A379	Babbacombe Road	(Acadia Road - Wellswood Park)	Main Distributor	TQ1 2	Torquay	A Class
A379	Babbacombe Road	(Wellswood Park - Ilsham Road)	Main Distributor	TQ1 2	Torquay	A Class
A379	Babbacombe Road	(Ilsham Road - Wellswood Avenue)	Main Distributor	TQ1 2	Torquay	A Class
A379	Babbacombe Road	(Wellswood Avenue - Higher Warberry Road)	Main Distributor	TQ1 2	Torquay	A Class

Road number	Street name	Junction section	Type	Postcode prefix	Town	Class type
A379	Babbacombe Road	(Higher Warberry Road - St Matthias Church Road)	Main Distributor	TQ1 2	Torquay	A Class
A379	Babbacombe Road	(St Matthias Church Road - Barrington Road)	Main Distributor	TQ1 2	Torquay	A Class
A379	Babbacombe Road	(Barrington Road - Lydwell Park Road)	Main Distributor	TQ1 2	Torquay	A Class
A379	Babbacombe Road	(Lydwell Park Road - Acre Lane)	Main Distributor	TQ1 2	Torquay	A Class
A379	Babbacombe Road	(Acre Lane - Ansteys Cove Road)	Main Distributor	TQ1 3	Torquay	A Class
A379	Babbacombe Road	(Ansteys Cove Road - Perinville Road)	Main Distributor	TQ1 3	Torquay	A Class
A379	Babbacombe Road	(Perinville Road - Warwick Close)	Main Distributor	TQ1 3	Torquay	A Class
A379	Babbacombe Road	(Warwick Close - Babbacombe Road rear 281)	Main Distributor	TQ1 3	Torquay	A Class
A379	Babbacombe Road	(Babbacombe Road rear 281 - 243)	Main Distributor	TQ1 3	Torquay	A Class
A379	Babbacombe Road	(Babbacombe Road rear No 243 - Babbacombe Road adj 177)	Main Distributor	TQ1 3	Torquay	A Class
A379	Babbacombe Road	(Babbacombe Road adj 177 - Perinville Road)	Main Distributor	TQ1 3	Torquay	A Class
A379	Babbacombe Road	(Perinville Road - Babbacombe Downs Road)	Main Distributor	TQ1 3	Torquay	A Class
A379	Babbacombe Road	(Babbacombe Downs Road - St Annes Road rear 33)	Main Distributor	TQ1 3	Torquay	A Class
A379	Babbacombe Road	(St Annes Road rear 33 - St James Place)	Main Distributor	TQ1 3	Torquay	A Class
A379	Babbacombe Road	(St James Place - Princes Street)	Main Distributor	TQ1 3	Torquay	A Class
A379	Babbacombe Road	(Princes Street - Portland Road)	Main Distributor	TQ1 3	Torquay	A Class
A379	Babbacombe Road	(Portland Road - Reddenhill Road rear)	Main Distributor	TQ1 3	Torquay	A Class
A379	Babbacombe Road	(Reddenhill Road rear - St Albans Road)	Main Distributor	TQ1 3	Torquay	A Class
A379	Babbacombe Road	(St Albans Road - York Road)	Main Distributor	TQ1 3	Torquay	A Class
A379	Babbacombe Road	(York Road - Babbacombe Downs Road)	Main Distributor	TQ1 3	Torquay	A Class
A379	Babbacombe Road	(Babbacombe Downs Road - Furrough Cross)	Main Distributor	TQ1 3	Torquay	A Class
A379	Babbacombe Road	(Furrough Cross - Lindridge Road)	Main Distributor	TQ1 3	Torquay	A Class
A379	Babbacombe Road	(Lindridge Road - Manor Road)	Main Distributor	TQ1 3	Torquay	A Class
A379	Torbay Road	(The Kings Drive - Belgrave Road)	Main Distributor	TQ2 5	Torquay	A Class
A379	Torbay Road	(Belgrave Road - The Kings Drive)	Main Distributor	TQ2 5	Torquay	Dual
A379	Torbay Road	(Belgrave Road - Torbay Road)	Main Distributor	TQ2 5	Torquay	A Class
A379	Torbay Road	(Torbay Road - Roundabout)	Main Distributor	TQ2 5	Torquay	A Class
A379	Torbay Road	(Torbay Road Roundabout - Torbay Road)	Main Distributor	TQ2 5	Torquay	Dual
A379	Torbay Road	(Vaughan Road - Cary Parade)	Main Distributor	TQ2 5	Torquay	A Class
A379	Torwood Street	(The Strand - Torwood Street Adj 17)	Main Distributor	TQ1 1	Torquay	A Class
A379	Torwood Street	(Torwood Street Adj 17 - The Terrace)	Main Distributor	TQ1 1	Torquay	A Class
A379	Torwood Street	(The Terrace - South Hill Road)	Main Distributor	TQ1 1	Torquay	A Class
A379	Cary Parade	(Cary Parade - Fleet Street)	Main Distributor	TQ2 5	Torquay	A Class
A379	Cary Parade	(Cary Parade - Torbay Road)	Main Distributor	TQ2 5	Torquay	Dual
A379	Teignmouth Road	(St Marychurch Road - Teignmouth Road)	Main Distributor	TQ1 4	Torquay	A Class
A379	Teignmouth Road	(Teignmouth Road - Pavor Road)	Main Distributor	TQ1 4	Torquay	A Class
A379	Teignmouth Road	(Pavor Road - Easterfield Lane)	Main Distributor	TQ1 4	Torquay	A Class
A379	Teignmouth Road	(Easterfield Lane - Steps Lane)	Main Distributor	TQ1 4	Torquay	A Class
A379	Teignmouth Road	(Steps Lane - Moor Lane)	Main Distributor	TQ1 4	Torquay	A Class
A379	Teignmouth Road	(Moor Lane - Watcombe Heights Road)	Main Distributor	TQ1 4	Torquay	A Class
A379	Teignmouth Road	(Watcombe Heights Road - Teignmouth Road Adj Maidencombe House)	Main Distributor	TQ1 4	Torquay	A Class
A379	Teignmouth Road	(Teignmouth Road Adj Maidencombe House - Ashley Priors Lane)	Main Distributor	TQ1 4	Torquay	A Class
A379	Teignmouth Road	(Ashley Priors Lane - Rockhouse Lane)	Main Distributor	TQ1 4	Torquay	A Class
A379	Teignmouth Road	(Rockhouse Lane - Sladnor Park Road)	Main Distributor	TQ1 4	Torquay	A Class
A379	Teignmouth Road	(Sladnor Park Road - Claddon Lane)	Main Distributor	TQ1 4	Torquay	A Class
A379	Teignmouth Road	(Claddon Lane - Ridge Road)	Main Distributor	TQ1 4	Torquay	A Class
A379	Teignmouth Road	(Ridge Road - Long Park Hill)	Main Distributor	TQ1 4	Torquay	A Class
A379	Teignmouth Road	(Long Park Hill - Sladnor Park Road)	Main Distributor	TQ1 4	Torquay	A Class
A379	Teignmouth Road	(Sladnor Park Road - Orestone Drive)	Main Distributor	TQ1 4	Torquay	A Class
A379	Teignmouth Road	(Orestone Drive - Brim Hill)	Main Distributor	TQ1 4	Torquay	A Class

Road number	Street name	Junction section	Type	Postcode prefix	Town	Class type
A379	Teignmouth Road	(Brim Hill - Stoke Road)	Main Distributor	TQ1 4	Torquay	A Class
A379	Teignmouth Road	(Stoke Road - Bend in Road)	Main Distributor	TQ1 4	Torquay	A Class
A379	Teignmouth Road	(Bend in Road - Long Park Hill)	Main Distributor	TQ1 4	Torquay	A Class
A379	Teignmouth Road	(Long Park Hill - Gabwell Hill)	Main Distributor	TQ1 4	Torquay	A Class
A379	Teignmouth Road	(Whiteway Lane - Higher Commons)	Main Distributor	TQ1 4	Torquay	A Class
A379	Teignmouth Road	(Higher Commons - Borough boundary)	Main Distributor	TQ1 4	Torquay	A Class
A379	The Strand	(Fleet Street - Clock Tower)	Main Distributor	TQ1 2	Torquay	A Class
A379	The Strand	(Clock Tower - Victoria Parade/Beacon Hill)	Main Distributor	TQ1 2	Torquay	A Class
A379	The Strand	(Clock Tower - Park Lane)	Main Distributor	TQ1 2	Torquay	A Class
A379	Teignmouth Road	(Gabwell Hill - Whiteway Lane)	Main Distributor	TQ1 4	Torquay	A Class
A380	Hamelin Way	(Gallows Gate Roundabout)	Strategic route	TQ3 1	Torquay	A Class
A380	Hamelin Way	(Gallows Gate - Hamelin Way)	Strategic route	TQ2 7	Torquay	A Class
A380	Hamelin Way	(Hamelin Way - Gallows Gate)	Strategic route	TQ2 7	Torquay	Dual
A380	Hamelin Way	(Hamelin Way - Newton Road)	Strategic route	TQ2 7	Torquay	A Class
A380	Hellevoetsluis Way	(Marldon Way - Love Lane)	Strategic route	TQ3 1	Torquay	A Class
A380	Hellevoetsluis Way	(Love Lane - Widdicombe Cross)	Strategic route	TQ3 1	Torquay	A Class
A380	Hellevoetsluis Way	(Widdicombe Cross - Gallows Gate)	Strategic route	TQ3 1	Torquay	A Class
A380	Hellevoetsluis Way	(Gallows Gate - Marldon Way)	Strategic route	TQ3 1	Torquay	Dual
A380	Kings Ash Road	(Totnes Road - Borough Park Road)	Strategic route	TQ3 3	Paignton	A Class
A380	Kings Ash Road	(Borough Park Road - Waterleat Road)	Strategic route	TQ3 3	Paignton	A Class
A380	Kings Ash Road	(Waterleat Road - Great Parks Road)	Strategic route	TQ3 3	Paignton	A Class
A380	Kings Ash Road	(Great Parks Road - Colley End Road)	Strategic route	TQ3 3	Paignton	A Class
A380	Kings Ash Road	(Colley End Road - Foxhole Road)	Strategic route	TQ3 3	Paignton	A Class
A380	Kings Ash Road	(Foxhole Road - Luscombe Road)	Strategic route	TQ3 3	Paignton	A Class
A380	Kings Ash Road	(Luscombe Road - Whitebeam Close)	Strategic route	TQ3 3	Paignton	A Class
A380	Kings Ash Road	(Whitebeam Close - Fernicombe Road)	Strategic route	TQ3 3	Paignton	A Class
A380	Kings Ash Road	(Fernicombe Road - Cote Hele Drive)	Strategic route	TQ3 3	Paignton	A Class
A380	Kings Ash Road	(Cote Hele Drive - Luscombe Road)	Strategic route	TQ3 3	Paignton	A Class
A380	Kings Ash Road	(Luscombe Road - Spruce Way)	Strategic route	TQ3 3	Paignton	A Class
A380	Kings Ash Road	(Spruce Way - Ramshill Road)	Strategic route	TQ3 3	Paignton	A Class
A380	Kings Ash Road	(Ramshill Road - Higher Ramshill Lane)	Strategic route	TQ3 3	Paignton	A Class
A380	Kings Ash Road	(Higher Ramshill Lane - Churscombe Cross)	Strategic route	TQ3 3	Paignton	A Class
A380	Newton Road (Kerswell)	(Hamelin Way - Riviera Way)	Strategic route	TQ2 7	Torquay	A Class
A380	Newton Road (Kerswell)	(Newton Road - Parsons Bridge)	Strategic route	TQ2 7	Torquay	A Class
A380	Hamelin Way	(Hamelin Way - Hamelin Way)				
A380	Hamelin Way	(Hamelin Way - Hamelin Way)				
A380	Hamelin Way	(South Devon Highway - Hamelin Way)				
A380	South Devon Highway	(Hamelin Way - South Devon Highway)				
A380	SDH	SDH				
A380	SDH	SDH				
A380	SDH	SDH				
A380	SDH	SDH				
A380	SDH	SDH				
A380	Hamelin Way	(Hamelin Way - Hamelin Way)				
A380	SDH	SDH				
A380	Hamelin Way	(Hamelin Way - Hamelin Way)				
A380	South Devon Highway	(South Devon Highway)				
A380	SDH	SDH				
A380	Hamelin Way	(Hamelin Way - South Devon Highway)				
A380	Hamelin Way	(Hamelin Way - Rivera Way)				

Road number	Street name	Junction section	Type	Postcode prefix	Town	Class type
A380 \ Devon	Kings Ash Road (Devon)	(Kings Ash Road - RA split)				
A380 \ Devon	Kings Ash Road	(Left Hand Approach to RA)				
A380 \ Devon	Marldon Way	(Roundabout)				
A380 \ Devon	Kings Ash Road	(RA Exit - Kings Ash)				
A380 \ Devon	Marldon Way	(Marldon Way - Southbound)				
A380 \ Devon	Five Lanes Roundabout	(Five Lanes Roundabout)				
A380 \ Devon	Marldon Way	(Marldon Way - Northbound)				
A380 \ Devon	Hellevoetsluis Way	(Five Lanes RA - Hellevoetsluis Way)				
A380 \ Devon	Hellevoetsluis Way	(Hellevoetsluis Way to Five Lanes RA)				
A380 \ Devon	South Devon Highway	Maintenance Boundary				
A385	Totnes Road	(Halfway Caravan Park - Fairparke)	Strategic route	TQ4 7	Paignton	A Class
A385	Totnes Road	(Fairparke - Blagdon Inn)	Strategic route	TQ4 7	Paignton	A Class
A385	Totnes Road	(Blagdon Inn - Totnes Road Rear)	Strategic route	TQ4 7	Paignton	A Class
A385	Totnes Road	(Totnes Road rear - Blagdon Road)	Strategic route	TQ4 7	Paignton	A Class
A385	Totnes Road	(Blagdon Road - Saxon Meadow)	Strategic route	TQ4 7	Paignton	A Class
A385	Totnes Road	(Saxon Meadow - Stoke Road)	Strategic route	TQ4 7	Paignton	A Class
A385	Totnes Road	(Stoke Road - Borough Road)	Strategic route	TQ4 7	Paignton	A Class
A385	Totnes Road	(Borough Road - Kings Ash Road)	Strategic route	TQ4 7	Paignton	A Class
B3060	Cecil Road	(Colley End Road - Churchward Road)	Main Distributor	TQ3 2	Paignton	B Class
B3060	Cecil Road	(Churchward Road - Cecil Mews)	Main Distributor	TQ3 2	Paignton	B Class
B3060	Cecil Road	(Cecil Mews - Torquay Road)	Main Distributor	TQ3 2	Paignton	B Class
B3060	Colley End Road	(Mill Lane - Well Street)	Main Distributor	TQ3 3	Paignton	B Class
B3060	Colley End Road	(Well Street - Winner Street)	Main Distributor	TQ3 3	Paignton	B Class
B3060	Colley End Road	(Winner Street - Colley End Road Roundabout)	Main Distributor	TQ3 3	Paignton	B Class
B3060	Colley End Road	(Colley End Road - Marldon Road)	Main Distributor	TQ3 3	Paignton	B Class
B3060	Marldon Road	(Churscombe Cross - James Avenue)	Main Distributor	TQ3 3	Paignton	B Class
B3060	Marldon Road	(James Avenue - Dixon Close Rear)	Main Distributor	TQ3 3	Paignton	B Class
B3060	Marldon Road	(Dixon Close Rear - Southfield Avenue)	Main Distributor	TQ3 1	Paignton	B Class
B3060	Marldon Road	(Southfield Avenue - Dunstone Park Road)	Main Distributor	TQ3 3	Paignton	B Class
B3060	Marldon Road	(Dunstone Park Road - Blakey Down Lane)	Main Distributor	TQ3 3	Paignton	B Class
B3060	Marldon Road	(Blakey Down Lane - Slip Road)	Main Distributor	TQ3 3	Paignton	B Class
B3060	Marldon Road	(Slip Road - Maidenway Slip Road)	Main Distributor	TQ3 3	Paignton	B Class
B3060	Marldon Road	(Maidenway Slip Road - Pines Road)	Main Distributor	TQ3 3	Paignton	B Class
B3060	Marldon Road	(Pines Road - Ramshill Road)	Main Distributor	TQ3 3	Paignton	B Class
B3060	Marldon Road	(Ramshill Road - Edenvale Road)	Main Distributor	TQ3 3	Paignton	B Class
B3060	Marldon Road	(Edenvale Road - Rosemary Gardens)	Main Distributor	TQ3 3	Paignton	B Class
B3060	Marldon Road	(Rosemary Gardens - Smallcombe Road)	Main Distributor	TQ3 3	Paignton	B Class
B3060	Marldon Road	(Smallcombe Road - Eden Grove)	Main Distributor	TQ3 3	Paignton	B Class
B3060	Marldon Road	(Eden Grove - Blatchcombe Road)	Main Distributor	TQ3 2	Paignton	B Class
B3060	Marldon Road	(Blatchcombe Road - Hodson Close)	Main Distributor	TQ3 3	Paignton	B Class
B3060	Marldon Road	(Hodson Close - Barnfield Road)	Main Distributor	TQ3 3	Paignton	B Class
B3060	Marldon Road	(Barnfield Road - Hillside Road)	Main Distributor	TQ3 3	Paignton	B Class
B3060	Marldon Road	(Hillside Road - Stanley Gardens)	Main Distributor	TQ3 3	Paignton	B Class
B3060	Marldon Road	(Stanley Gardens - Stanley Gardens)	Main Distributor	TQ3 3	Paignton	B Class
B3060	Marldon Road	(Stanley Gardens - Marldon Avenue)	Main Distributor	TQ3 3	Paignton	B Class

Road number	Street name	Junction section	Type	Postcode prefix	Town	Class type
B3060	Marldon Road	(Marldon Avenue - Colley End Road)	Main Distributor	TQ3 3	Paignton	B Class
B3060\ Devon	Marldon Road	(Left hand Approach - Marldon Road)				
B3060\ Devon	Marldon Road	(Marldon Way - Marldon Road)				
B3060\ Devon	Marldon Road	(Marldon Road - Marldon Road)				
B3199	Hele Road	(Newton Road - Riviera Way)	Main Distributor	TQ2 7	Torquay	B Class
B3199	Hele Road	(Riviera Way - Broomhill Way)	Main Distributor	TQ2 7	Torquay	B Class
B3199	Hele Road	(Broomhill Way - Newton Road)	Main Distributor	TQ2 7	Torquay	B Class
B3199	Hele Road	(Broomhill Way - Hele Cross Roundabout)	Main Distributor	TQ2 7	Torquay	B Class
B3199	Hele Road	(Hele Cross Roundabout)	Main Distributor	TQ2 7	Torquay	B Class
B3199	Hele Road	(Hele Cross Roundabout - Hele Close)	Main Distributor	TQ2 7	Torquay	B Class
B3199	Hele Road	(Hele Close - Salisbury Avenue)	Main Distributor	TQ2 7	Torquay	B Class
B3199	Hele Road	(Salisbury Avenue - Glenthorne Close)	Main Distributor	TQ2 7	Torquay	B Class
B3199	Hele Road	(Glenthorne Close - Orchard Road)	Main Distributor	TQ2 7	Torquay	B Class
B3199	Hele Road	(Orchard Road - Truro Avenue)	Main Distributor	TQ2 7	Torquay	B Class
B3199	Hele Road	(Truro Avenue - Teignmouth Road)	Main Distributor	TQ2 7	Torquay	B Class
B3199	Teignmouth Road	(Hele Road - Teignmouth Road)	Main Distributor	TQ1 4	Torquay	B Class
B3199	Teignmouth Road	(Teignmouth Road - Teignmouth Road)	Main Distributor	TQ1 4	Torquay	B Class
B3199	Teignmouth Road	(Westhill Road - Teignmouth Road)	Main Distributor	TQ1 4	Torquay	B Class
B3199	Teignmouth Road	(Teignmouth Road - Combe Lane)	Main Distributor	TQ1 4	Torquay	B Class
B3199	Teignmouth Road	(Combe Lane - Trumlands Road)	Main Distributor	TQ1 4	Torquay	B Class
B3199	Teignmouth Road	(Trumlands Road - Havelock Road)	Main Distributor	TQ1 4	Torquay	B Class
B3199	Teignmouth Road	(Havelock Road - Happaway Road)	Main Distributor	TQ1 4	Torquay	B Class
B3199	Teignmouth Road	(Happaway Road - Park Road)	Main Distributor	TQ1 4	Torquay	B Class
B3199	Teignmouth Road	(Park Road - Fore Street)	Main Distributor	TQ1 4	Torquay	B Class
B3199	Teignmouth Road	(Fore Street - Teignmouth Road)	Main Distributor	TQ1 4	Torquay	B Class
B3201	Esplanade Road	(Sands Road - Adelphi Road)	Secondary Distributor	TQ4 5	Paignton	B Class
B3201	Esplanade Road	(Adelphi Road - Esplanade Road Adj Festival Theatre)	Secondary Distributor	TQ4 5	Paignton	B Class
B3201	Esplanade Road	(Esplanade Road Adj Festival Theatre - Torbay Road)	Secondary Distributor	TQ4 5	Paignton	B Class
B3201	Esplanade Road	(Torbay Road - Esplanade Road Adj Festival Theatre)	Secondary Distributor	TQ4 5	Paignton	B Class
B3201	Esplanade Road	(Esplanade Road Adj Festival Theatre - Kernou Road)	Secondary Distributor	TQ4 5	Paignton	B Class
B3201	Esplanade Road	(Kernou Road - Beach Road)	Secondary Distributor	TQ4 5	Paignton	B Class
B3201	Esplanade Road	(Beach Road - Garfield Road)	Secondary Distributor	TQ4 5	Paignton	B Class
B3201	Esplanade Road	(Garfield Road - Garfield Road rear)	Secondary Distributor	TQ4 5	Paignton	B Class
B3201	Esplanade Road	(Garfield Road Rear - Eastern Esplanade)	Secondary Distributor	TQ4 5	Paignton	B Class
B3201	Esplanade Road	(Eastern Esplanade - Steartfield Road)	Secondary Distributor	TQ3 2	Paignton	B Class
B3201	Esplanade Road	(Steartfield Road - Lower Polsham Road)	Secondary Distributor	TQ3 2	Paignton	B Class
B3201	Esplanade Road	(Lower Polsham Road - Marine Drive)	Secondary Distributor	TQ3 2	Paignton	B Class
B3201	Manor Road	(Marine Drive - Marine Gardens)	Secondary Distributor	TQ3 2	Paignton	B Class
B3201	Manor Road	(Marine Gardens - Morin Road)	Secondary Distributor	TQ3 2	Paignton	B Class
B3201	Manor Road	(Morin Road - Manor Avenue)	Secondary Distributor	TQ3 2	Paignton	B Class
B3201	Manor Road	(Manor Avenue - Torquay Road Rear)	Secondary Distributor	TQ3 2	Paignton	B Class
B3201	Manor Road	(Torquay Road Rear - Torquay Road)	Secondary Distributor	TQ3 2	Paignton	B Class
B3201	Marine Drive	(Esplanade Road - Marine Park)	Secondary Distributor	TQ3 2	Paignton	B Class
B3201	Marine Drive	(Marine Park - Colin Road)	Secondary Distributor	TQ3 2	Paignton	B Class
B3201	Marine Drive	(Colin Road - Manor Road)	Secondary Distributor	TQ3 2	Paignton	B Class
B3201	Marine Drive	(Manor Road - Marine Gardens)	Secondary Distributor	TQ3 2	Paignton	B Class
B3201	Marine Drive	(Marine Gardens - Marine Parade)	Secondary Distributor	TQ3 2	Paignton	B Class
B3201	Roundham Road	(Dartmouth Road - Roundham Road)	Secondary Distributor	TQ4 5	Paignton	B Class
B3201	Sands Road	(Dartmouth Road - Station Lane)	Secondary Distributor	TQ4 5	Paignton	B Class

Road number	Street name	Junction section	Type	Postcode prefix	Town	Class type
B3201	Sands Road	(Station Lane - Sands Road Roundabout)	Secondary Distributor	TQ4 5	Paignton	B Class
B3201	Sands Road	(Whitstone Road - Sands Road Adj Level Crossing)	Secondary Distributor	TQ4 5	Paignton	B Class
B3201	Sands Road	(Sands Road Adj Level Crossing - Hill Park Terrace Rear)	Secondary Distributor	TQ4 5	Paignton	B Class
B3201	Sands Road	(Hill Park Terrace Rear - Hill Park Terrace)	Secondary Distributor	TQ4 5	Paignton	B Class
B3201	Sands Road	(Hill Park Terrace - St Andrews Road)	Secondary Distributor	TQ4 5	Paignton	B Class
B3201	Sands Road	(St Andrews Road - Queens Road)	Secondary Distributor	TQ4 5	Paignton	B Class
B3201	Sands Road	(Queens Road - Adelphi Lane)	Secondary Distributor	TQ4 5	Paignton	B Class
B3201	Sands Road	(Adelphi Lane - Belle Vue Road)	Secondary Distributor	TQ4 5	Paignton	B Class
B3201	Sands Road	(Belle Vue Road - Sands Road Roundabout)	Secondary Distributor	TQ4 5	Paignton	B Class
B3201	Sands Road	(Roundham Road - Esplanade Road)	Secondary Distributor	TQ4 5	Paignton	B Class
B3201	Seaway Road	(Marine Parade - Marine Parade Rear)	Secondary Distributor	TQ3 2	Paignton	B Class
B3201	Seaway Road	(Marine Parade rear - Morin Road)	Secondary Distributor	TQ3 2	Paignton	B Class
B3201	Seaway Road	(Morin Road - Eugene Road)	Secondary Distributor	TQ3 2	Paignton	B Class
B3201	Torbay Road	(Esplanade Road - Esplanade Road Rear)	Secondary Distributor	TQ4 5	Paignton	B Class
B3201	Torbay Road	(Esplanade Road Rear - Garfield Road)	Secondary Distributor	TQ4 5	Paignton	B Class
B3201	Torbay Road	(Garfield Road - Queens Park Road)	Secondary Distributor	TQ4 5	Paignton	B Class
B3201	Torbay Road	(Queens Park Road - Parkside Road)	Secondary Distributor	TQ4 5	Paignton	B Class
B3201	Torbay Road	(Parkside Road - Great Western Road)	Secondary Distributor	TQ4 5	Paignton	B Class
B3201	Whitstone Road	(Roundham Road - Whitstone Road Adj 11)	Secondary Distributor	TQ4 5	Paignton	B Class
B3201	Whitstone Road	(Whitstone Road Adj 11 - Sands Road)	Secondary Distributor	TQ4 5	Paignton	B Class
B3203	Borough Road	(Totnes Road - Pennine Drive)	Link Road	TQ4 7	Paignton	B Class
B3203	Borough Road	(Pennine Drive- Tor Park Road)	Link Road	TQ4 7	Paignton	B Class
B3203	Borough Road	(Tor Park Road - Longstone Road)	Link Road	TQ4 7	Paignton	B Class
B3203	Borough Road	(Longstone Road - The Grove)	Link Road	TQ4 7	Paignton	B Class
B3203	Borough Road	(The Grove - Borough Close)	Link Road	TQ4 7	Paignton	B Class
B3203	Borough Road	(Borough Close - Brixham Road)	Link Road	TQ4 7	Paignton	B Class
C10	Church Street	(Church Street - Winner Street)	Secondary Distributor	TQ3 3	Paignton	C Class
C10	Church Street	(Winner Street - Church Street)	Secondary Distributor	TQ3 3	Paignton	C Class
C10	Church Street	(Church Street - Crown and Anchor Way)	Secondary Distributor	TQ3 3	Paignton	C Class
C10	Church Street	(Crown and Anchor Way - Well Street)	Secondary Distributor	TQ3 3	Paignton	C Class
C10	Church Street	(Well Street - Palace Place)	Secondary Distributor	TQ3 3	Paignton	C Class
C10	Church Street	(Palace Place - Princes Street)	Secondary Distributor	TQ3 3	Paignton	C Class
C10	Church Street	(Princes Street - Torquay Road)	Secondary Distributor	TQ3 3	Paignton	C Class
C10	Winner Street	(Church Street - Church Street)	Secondary Distributor	TQ3 3	Paignton	C Class
C10	Winner Street	(Church Street - Winner Hill Road)	Secondary Distributor	TQ3 3	Paignton	C Class
C10	Winner Street	(Winner Hill Road - Colley End Road)	Secondary Distributor	TQ3 3	Paignton	C Class
C11	Headland Park Road	(Great Headland Road - Headland Grove)	Secondary Distributor	TQ3 2	Paignton	C Class
C11	Headland Park Road	(Headland Grove - Torquay Road)	Secondary Distributor	TQ3 2	Paignton	C Class
C11	Preston Down Road	(Hellevoetsluis Way - Cockington Road)	Secondary Distributor	TQ3 1	Paignton	C Class
C11	Preston Down Road	(Cockington Road - Preston Down Road Slip Road)	Secondary Distributor	TQ3 1	Paignton	C Class
C11	Preston Down Road	(Slip Road - Sandringham Drive)	Secondary Distributor	TQ3 1	Paignton	C Class
C11	Preston Down Road	(Sandringham Drive - Duchy Drive)	Secondary Distributor	TQ3 1	Paignton	C Class
C11	Preston Down Road	(Duchy Drive - Duchy Avenue)	Secondary Distributor	TQ3 1	Paignton	C Class
C11	Preston Down Road	(Duchy Avenue - Preston Down Road Adj 64)	Secondary Distributor	TQ3 1	Paignton	C Class
C11	Preston Down Road	(Preston Down Road Adj 64 - Godfrey Avenue)	Secondary Distributor	TQ3 1	Paignton	C Class
C11	Preston Down Road	(Godfrey Avenue - Preston Down Avenue)	Secondary Distributor	TQ3 1	Paignton	C Class
C11	Preston Down Road	(Preston Down Avenue - Sandringham Gardens)	Secondary Distributor	TQ3 1	Paignton	C Class
C11	Sandringham Gardens	(Preston Down Road - Sandringham Drive)	Secondary Distributor	TQ3 1	Paignton	C Class
C11	Sandringham Gardens	(Sandringham Drive - Upper Headland Park Road)	Secondary Distributor	TQ3 1	Paignton	C Class

Road number	Street name	Junction section	Type	Postcode prefix	Town	Class type
C11	Upper Headland Park Road	(Preston Down Road - All Hallows Road)	Secondary Distributor	TQ3 1	Paignton	C Class
C11	Upper Headland Park Road	(All Hallows Road - Upper Penns Road)	Secondary Distributor	TQ3 1	Paignton	C Class
C11	Upper Headland Park Road	(Upper Penns Road - Hilton Drive)	Secondary Distributor	TQ3 1	Paignton	C Class
C11	Upper Headland Park Road	(Hilton Drive - Cockington Lane)	Secondary Distributor	TQ3 1	Paignton	C Class
C11	Upper Headland Park Road	(Cockington Lane - Great Headland Road)	Secondary Distributor	TQ3 2	Paignton	C Class
C11 \ Devon	Preston Down Road	(Five Lanes RA – Preston Down Road)				
C11\Devon	Preston Down Road	(Approach to Five Lanes)				
C11\Devon	Preston Down Road	(Preston Down Road – Preston Down Road)				
C13	Langdon Lane	(Langdon Lane Adj 29 - Dart View Road)	Link Road	TQ5 0	Brixham	C Class
C13	Langdon Lane	(Dart View Road - Langdon Fields)	Link Road	TQ5 0	Brixham	C Class
C13	Langdon Lane	(Langdon Fields - Langdon Lane Roundabout)	Link Road	TQ5 0	Brixham	C Class
C13	Langdon Lane	(Langdon Lane Roundabout - Dartmouth Road)	Link Road	TQ5 0	Brixham	C Class
C13	Greenway Road	(Dartmouth Lane - Greenway Park)	Link Road	TQ5 0	Brixham	C Class
C13	Greenway Road	(Greenway Park - Old Road)	Link Road	TQ5 0	Brixham	C Class
C13	Greenway Road	(Old Road - Old Road Slip Road)	Link Road	TQ5 0	Brixham	C Class
C13	Greenway Road	(Old Road Slip Road - Galmpton Glade)	Link Road	TQ5 0	Brixham	C Class
C13	Greenway Road	(Galmpton Glade - The Roundings)	Link Road	TQ5 0	Brixham	C Class
C13	Greenway Road	(The Roundings - Stoke Gabriel Road)	Link Road	TQ5 0	Brixham	C Class
C13	Greenway Road	(Stoke Gabriel Road - Manor Vale Road)	Link Road	TQ5 0	Brixham	C Class
C161	Kingskerswell Road	(Fluder Hill - Orestone Lane)	Link Road	TQ2 7	Torquay	C Class
C161	Kingskerswell Road	(Orestone Lane - Dacombe Hill)	Link Road	TQ2 8	Torquay	C Class
C161	Kingskerswell Road	(Dacombe Hill - Kingskerswell Road split)	Link Road	TQ2 8	Torquay	C Class
C161	Kingskerswell Road	(Kingskerswell Road split - Barton Hill Road)	Link Road	TQ2 8	Torquay	C Class
C161	Kingskerswell Road	(Kingskerswell Road split - Barton Hill Road)	Link Road	TQ2 8	Torquay	C Class
C162	Collaton Road	(Cadewell Lane - Exe Hill)	Link Road	TQ2 7	Torquay	C Class
C162	Collaton Road	(Exe Hill - Crosspark Avenue)	Link Road	TQ2 7	Torquay	C Class
C162	Collaton Road	(Crosspark Avenue - Birch Walk)	Link Road	TQ2 7	Torquay	C Class
C162	Collaton Road	(Higher Cadewell Lane - Birch Walk)	Link Road	TQ2 7	Torquay	C Class
C162	Higher Cadewell Lane	(Collaton Road - Edginswell Lane)	Link Road	TQ2 7	Torquay	C Class
C162	Shiphay Lane	(Shiphay Avenue - Shiphay Park Road)	Link Road	TQ2 7	Torquay	C Class
C162	Shiphay Lane	(Shiphay Park Road - Oak Park Close)	Link Road	TQ2 7	Torquay	C Class
C162	Shiphay Lane	(Oak Park Close - Oak Park Avenue)	Link Road	TQ2 7	Torquay	C Class
C162	Shiphay Lane	(Oak Park Avenue - Dairy Hill)	Link Road	TQ2 7	Torquay	C Class
C162	Shiphay Lane	(Dairy Hill - Yealm Grove)	Link Road	TQ2 7	Torquay	C Class
C162	Shiphay Lane	(Yealm Grove - Cadewell Lane)	Link Road	TQ2 7	Torquay	C Class
C162	Edginswell Lane	(Higher Cadewell Lane - Higher Edginswell Lane)	Link Road	TQ2 7	Torquay	C Class
C162	Edginswell Lane	(Higher Edginswell Lane - Edginswell Lane Adj Parsons Bridge Track)	Link Road	TQ2 7	Torquay	C Class
C162	Edginswell Lane	(Edginswell Lane Adj Parsons Bridge Track - Saturday Lane)	Link Road	TQ2 7	Torquay	C Class
C206	Roundham Road	(Cliff Road - Roundham Road Adj 39)	Link Road	TQ4 5	Paignton	C Class
C206	Roundham Road	(Roundham Road Adj 39 - 49)	Link Road	TQ4 5	Paignton	C Class
C206	Roundham Road	(Roundham Road Adj 49 - Sands Road)	Link Road	TQ4 5	Paignton	C Class
C207	Oldway Road	(Higher Polsham Road - Westhill Road)	Link Road	TQ3 2	Paignton	C Class
C207	Oldway Road	(Westhill Road - Kingshurst Drive)	Link Road	TQ3 2	Paignton	C Class
C207	Oldway Road	(Kingshurst Drive - Laura Avenue)	Link Road	TQ3 2	Paignton	C Class

Road number	Street name	Junction section	Type	Postcode prefix	Town	Class type
C207	Oldway Road	(Laura Avenue - Upper Manor Road)	Link Road	TQ3 2	Paignton	C Class
C207	Southfield Road	(Colley End Road - Cecil Road)	Link Road	TQ3 2	Paignton	C Class
C207	Southfield Road	(Cecil Road - Central Avenue)	Link Road	TQ3 2	Paignton	C Class
C207	Southfield Road	(Central Avenue - Woodland Park)	Link Road	TQ3 2	Paignton	C Class
C207	Southfield Road	(Woodland Park - Shorton Road)	Link Road	TQ3 2	Paignton	C Class
C207	Southfield Road	(Shorton Road - Higher Polsham Road)	Link Road	TQ3 2	Paignton	C Class
C207	Upper Manor Road	(Oldway Road - Manor Crescent)	Secondary Distributor	TQ3 2	Paignton	C Class
C207	Upper Manor Road	(Manor Crescent - Torquay Road Rear)	Secondary Distributor	TQ3 2	Paignton	C Class
C207	Upper Manor Road	(Torquay Road Rear - Torquay Road)	Secondary Distributor	TQ3 2	Paignton	C Class
C33	Belgrave Road	(Torbay Road - Chestnut Avenue)	Secondary Distributor	TQ2 5	Torquay	C Class
C33	Belgrave Road	(Chestnut Avenue - Scarborough Road)	Secondary Distributor	TQ2 5	Torquay	C Class
C33	Belgrave Road	(Scarborough Road - Falkland Road)	Secondary Distributor	TQ2 5	Torquay	C Class
C33	Belgrave Road	(Falkland Road - Tor Church Road)	Secondary Distributor	TQ2 5	Torquay	C Class
C33	Belgrave Road	(Tor Church Road - Church Street)	Secondary Distributor	TQ2 5	Torquay	C Class
C33	Belgrave Road	(Church Street - Laburnum Street)	Secondary Distributor	TQ2 5	Torquay	C Class
C33	Belgrave Road	(Laburnum Street - Bampfylde Road)	Secondary Distributor	TQ2 5	Torquay	C Class
C33	South Street	(Vansittart Road - Lansdowne Lane)	Secondary Distributor	TQ2 5	Torquay	C Class
C33	South Street	(Lansdowne Lane - East Street)	Secondary Distributor	TQ2 5	Torquay	C Class
C34	Bronshill Road	(St Marychurch Road - Henbury Close)	Link Road	TQ1 3	Torquay	C Class
C34	Bronshill Road	(Henbury Close - Netherleigh Road)	Link Road	TQ1 3	Torquay	C Class
C34	Bronshill Road	(Netherleigh Road - Derwent Road)	Link Road	TQ1 3	Torquay	C Class
C34	Bronshill Road	(Derwent Road - Westlands Lane)	Link Road	TQ1 3	Torquay	C Class
C34	Bronshill Road	(Westlands Lane - Windsor Road)	Link Road	TQ1 3	Torquay	C Class
C34	Forest Road	(Upton Hill - Lower Shirburn Road)	Link Road	TQ1 4	Torquay	C Class
C34	Forest Road	(Lower Shirburn Road - Westbourne Road)	Link Road	TQ1 4	Torquay	C Class
C34	Forest Road	(Westbourne Road - Shirburn Road)	Link Road	TQ1 3	Torquay	C Class
C34	Forest Road	(Shirburn Road - Empire Road)	Link Road	TQ1 4	Torquay	C Class
C34	Forest Road	(Empire Road - Studley Road)	Link Road	TQ1 4	Torquay	C Class
C34	Forest Road	(Studley Road - St Margarets Avenue)	Link Road	TQ1 4	Torquay	C Class
C34	Forest Road	(St Margarets Avenue - St Marychurch Road)	Link Road	TQ1 3	Torquay	C Class
C34	Upton Hill	(Lymington Road - St James Road)	Link Road	TQ1 3	Torquay	C Class
C34	Upton Hill	(St James Road - Forest Road)	Link Road	TQ1 3	Torquay	C Class
C34	Upton Road	(Union Street - Brunswick Terrace)	Secondary Distributor	TQ1 4	Torquay	C Class
C34	Upton Road	(Brunswick Terrace - Magdalene Road)	Secondary Distributor	TQ1 4	Torquay	C Class
C34	Upton Road	(Magdalene Road - Upton Road Adj 37)	Secondary Distributor	TQ1 4	Torquay	C Class
C34	Upton Road	(Upton Road Adj 37 - Magdalene Road Rear)	Secondary Distributor	TQ1 4	Torquay	C Class
C34	Upton Road	(Magdalene Road rear - Lymington Road)	Secondary Distributor	TQ1 4	Torquay	C Class
C34	Windsor Road	(Carlton Road - Cary Park Road)	Link Road	TQ1 1	Torquay	C Class
C34	Windsor Road	(Cary Park Road - Hingston Road)	Link Road	TQ1 1	Torquay	C Class
C34	Windsor Road	(Hingston Road - Belmont Road)	Link Road	TQ1 1	Torquay	C Class
C34	Windsor Road	(Belmont Road - Windermere Road)	Link Road	TQ1 1	Torquay	C Class
C34	Windsor Road	(Windermere Road - Windermere Road Rear)	Link Road	TQ1 1	Torquay	C Class
C34	Windsor Road	(Windermere Road rear - Kenwyn Road)	Link Road	TQ1 1	Torquay	C Class
C340	Marldon Road	(Gallows Gate - Marldon Road)	Secondary Distributor	TQ2 7	Torquay	C Class
C340	Marldon Road	(Marldon Road - Moles Lane)	Secondary Distributor	TQ2 7	Torquay	C Class
C340	Marldon Road	(Moles Lane - Higher Edginswell Lane)	Secondary Distributor	TQ2 7	Torquay	C Class
C340	Marldon Road	(Higher Edginswell Lane - Nut Bush Lane)	Secondary Distributor	TQ2 7	Torquay	C Class
C340	Marldon Road	(Nut Bush Lane - Avon Road)	Secondary Distributor	TQ2 7	Torquay	C Class
C340	Marldon Road	(Avon Road - Dart Avenue)	Secondary Distributor	TQ2 7	Torquay	C Class
C340	Marldon Road	(Dart Avenue - Stanbury Road)	Secondary Distributor	TQ2 7	Torquay	C Class
C340	Marldon Road	(Stanbury Road - Marldon Road Roundabout)	Secondary Distributor	TQ2 7	Torquay	C Class
C340	Marldon Road	(Upper Cockington Lane - Shiphay Avenue)	Secondary Distributor	TQ2 7	Torquay	C Class
C340	Shiphay Avenue	(Marldon Road - Dairy Hill)	Secondary Distributor	TQ2 7	Torquay	C Class
C340	Shiphay Avenue	(Dairy Hill - Shiphay Lane)	Secondary Distributor	TQ2 7	Torquay	C Class

Road number	Street name	Junction section	Type	Postcode prefix	Town	Class type
C340	Shiphay Lane	(Shiphay Avenue - Queensway)	Secondary Distributor	TQ2 7	Torquay	C Class
C340	Shiphay Lane	(Queensway - Summerfield Road)	Secondary Distributor	TQ2 6	Torquay	C Class
C340	Shiphay Lane	(Summerfield Road - Newton Road)	Secondary Distributor	TQ2 6	Torquay	C Class
C340	Moles Lane	(Marldon Road - Moles Cross)	Link Road	TQ2 7	Torquay	C Class
C345	Blagdon Road	(Glazegate Lane - West Lane)	Link Road	TQ3 3	Paignton	C Class
C345	Blagdon Road	(West Lane - Higher Blagdon Lane)	Link Road	TQ3 3	Paignton	C Class
C345	Blagdon Road	(Higher Blagdon Lane - Bell Lane)	Link Road	TQ3 3	Paignton	C Class
C345	Blagdon Road	(Bell Lane - Middle Blagdon Lane)	Link Road	TQ3 3	Paignton	C Class
C345	Blagdon Road	(Middle Blagdon Lane - West Lane)	Link Road	TQ3 3	Paignton	C Class
C345	Blagdon Road	(West Lane - Lower Blagdon Lane)	Link Road	TQ3 3	Paignton	C Class
C345	Blagdon Road	(Lower Blagdon Lane - Blagdon Cottages)	Link Road	TQ3 3	Paignton	C Class
C345	Blagdon Road	(Blagdon Cottages - Totnes Road)	Link Road	TQ3 3	Paignton	C Class
C41	Stoke Road	(Totnes Road - Brecon Close)	Secondary Distributor	TQ4 7	Paignton	C Class
C41	Stoke Road	(St Mary's Park - Stoke Road speed change)	Secondary Distributor	TQ4 7	Paignton	C Class
C41	Stoke Road	(Stoke Road speed change - Stoke Road Private)	Secondary Distributor	TQ4 7	Paignton	C Class
C41	Stoke Road	(Stoke Road private - Tor Park Road)	Secondary Distributor	TQ4 7	Paignton	C Class
C41	Stoke Road	(Tor Park Road - Yalberton Road)	Secondary Distributor	TQ4 7	Paignton	C Class
C41	Stoke Road	(Yalberton Road - Stoke Road Adj Higher Yalberton Farm)	Secondary Distributor	TQ4 7	Paignton	C Class
C41	Stoke Road	(Stoke Road Adj Higher Yalberton Farm - Long Road)	Secondary Distributor	TQ4 7	Paignton	C Class
C41	Stoke Road	(Long Road - Aish Road)	Secondary Distributor	TQ4 7	Paignton	C Class
C41	Stoke Road	(Aish Road - Paignton Road)	Secondary Distributor	TQ4 7	Paignton	C Class
C41	Stoke Road	(Brecon Close - St Mary's Park)	Secondary Distributor	TQ4 7	Paignton	C Class
C47	Stoke Road	(Longpark Hill - Teignmouth Road)	Link Road	TQ1 4	Torquay	C Class
C47	Stoke Road	(Stoke Road Adj 1 - Longpark Hill)	Link Road	TQ1 4	Torquay	C Class
C51	Warbro Road	(Manor Road - St Edmunds Road)	Link Road	TQ1 3	Torquay	C Class
C51	Warbro Road	(St Edmunds Road - Springfield Road)	Link Road	TQ1 3	Torquay	C Class
C51	Warbro Road	(Springfield Road - Marnham Road)	Link Road	TQ1 3	Torquay	C Class
C51	Warbro Road	(Marnham Road - Devons Road)	Link Road	TQ1 3	Torquay	C Class
C51	Warbro Road	(Devons Road - Aveland Road)	Link Road	TQ1 3	Torquay	C Class
C51	Warbro Road	(Aveland Road - Cary Park Road)	Link Road	TQ1 3	Torquay	C Class
C51	Warbro Road	(Cary Park Road - St Georges Road)	Link Road	TQ1 3	Torquay	C Class
C51	Warbro Road	(St Georges Road - All Saints Road rear)	Link Road	TQ1 3	Torquay	C Class
C51	Warbro Road	(All Saints Road Rear - All Saints Road)	Link Road	TQ1 3	Torquay	C Class
C51	Warbro Road	(All Saints Road - Windermere Road Rear)	Link Road	TQ1 3	Torquay	C Class
C51	Warbro Road	(Windermere Road Rear - Windermere Road)	Link Road	TQ1 3	Torquay	C Class
C51	Warbro Road	(Windermere Road - Reddenhill Road)	Link Road	TQ1 3	Torquay	C Class
C760	Horsepool Street	(Monksbridge Road - Dashpers)	Link Road	TQ5 9	Brixham	C Class
C760	Horsepool Street	(Dashpers - Milton Street)	Link Road	TQ5 9	Brixham	C Class
C760	Monksbridge Road	(New Road - Monksbridge Road)	Secondary Distributor	TQ5 9	Brixham	C Class
C761	Bascombe Road	(Dartmouth Road - Bascombe Road Slip Road)	Link Road	TQ5 0	Brixham	C Class
C761	Bascombe Road	(Bascombe Road - Dartmouth Road)	Link Road	TQ5 0	Brixham	C Class
C761	Bascombe Road	(Bascombe Road Slip Road - Warborough Road)	Link Road	TQ5 0	Brixham	C Class
C761	Bascombe Road	(Warborough Road - Brakeridge Close)	Link Road	TQ5 0	Brixham	C Class
C761	Bascombe Road	(Brakeridge Close - Bascombe Close)	Link Road	TQ5 0	Brixham	C Class
C761	Bascombe Road	(Bascombe Close - Bridge Road)	Link Road	TQ5 0	Brixham	C Class
C761	Bascombe Road	(Bridge Road - Elberry Lane)	Link Road	TQ5 0	Brixham	C Class
C761	Bascombe Road	(Elberry Lane - Green Lane)	Link Road	TQ5 0	Brixham	C Class
C761	Bascombe Road	(Green Lane - Churston Road)	Link Road	TQ5 0	Brixham	C Class
C761	Churston Road	(Bascombe Road - The Hayes)	Link Road	TQ5 0	Brixham	C Class
C761	Churston Road	(The Hayes - Ferrers Green)	Link Road	TQ5 0	Brixham	C Class

Road number	Street name	Junction section	Type	Postcode prefix	Town	Class type
C761	Churston Road	(Ferrers Green - Barn Court)	Link Road	TQ5 0	Brixham	C Class
C761	Churston Road	(Barn Court - Ferrers Green)	Link Road	TQ5 0	Brixham	C Class
C761	Churston Road	(Ferrers Green - Brixham Road)	Link Road	TQ5 0	Brixham	C Class
C762	Cockington Road	(Preston Down Road - Occombe Cross)	Link Road	TQ3 1	Paignton	C Class
C762	Cockington Road	(Occombe Cross - Cockington Road)	Link Road	TQ3 1	Torquay	C Class
C762	Cockington Road	(Cockington Road - Old Totnes Road)	Link Road	TQ3 1	Torquay	C Class
C762	Old Totnes Road	(Cockington Road - Cockington Lane)	Link Road	TQ2 6	Torquay	C Class
C762	Cockington Lane	(Old Mill Road - Torbay Road)	Secondary Distributor	TQ2 6	Torquay	C Class
C762	Cockington Lane	(Old Totnes Road - Old Mill Road)	Link Road	TQ2 6	Torquay	C Class
C770	Fore Street	(The Strand - King Street)	Secondary Distributor	TQ5 8	Brixham	C Class
C770	Market Street	(New Road - Bank Lane)	Secondary Distributor	TQ5 8	Brixham	C Class
C770	Market Street	(Bank Lane - Church Hill East)	Secondary Distributor	TQ5 8	Brixham	C Class
C770	Middle Street	(Market Street - Middle Street Adj Bus Station)	Secondary Distributor	TQ5 8	Brixham	C Class
C770	Middle Street	(Middle Street Adj Bus Station - Union Lane)	Secondary Distributor	TQ5 8	Brixham	C Class
C770	Middle Street	(Union Lane - Apters Hill)	Secondary Distributor	TQ5 8	Brixham	C Class
C770	Middle Street	(Apters Hill - The Strand)	Secondary Distributor	TQ5 8	Brixham	C Class
C770	The Quay	(The Strand - Overgang Road)	Secondary Distributor	TQ5 8	Brixham	C Class
C770	The Strand	(The Quay - Fore Street)	Secondary Distributor	TQ5 8	Brixham	C Class
C787	East Street	(Laburnum Row - St Efrides Road)	Secondary Distributor	TQ2 5	Torquay	C Class
C787	East Street	(St Efrides Road - Church Lane)	Secondary Distributor	TQ2 5	Torquay	C Class
C787	East Street	(Church Lane - South Street)	Secondary Distributor	TQ2 5	Torquay	C Class
C787	East Street	(South Street - Newton Road)	Secondary Distributor	TQ2 5	Torquay	C Class
C787	East Street	(Newton Road - Rillage Lane)	Secondary Distributor	TQ2 5	Torquay	C Class
C787	East Street	(Rillage Lane - Vansittart Road)	Secondary Distributor	TQ2 5	Torquay	C Class
C787	South Street	(Newton Road - East Street)	Secondary Distributor	TQ2 5	Torquay	C Class
C787	Tor Hill Road	(Tor Church Road - Morgan Avenue)	Secondary Distributor	TQ2 5	Torquay	C Class
C787	Tor Hill Road	(Morgan Avenue - Palm Road)	Secondary Distributor	TQ2 5	Torquay	C Class
C787	Tor Hill Road	(Palm Road - Zion Road)	Secondary Distributor	TQ2 5	Torquay	C Class
C787	Tor Hill Road	(Zion Road - Laburnum Street)	Secondary Distributor	TQ2 5	Torquay	C Class
C787	Union Street	(Newton Road - Teignmouth Road)	Local Access Roads	TQ2 5	Torquay	C Class
C787	Union Street	(Teignmouth Road - Laburnum Row)	Secondary Distributor	TQ1 4	Torquay	C Class
C787	Union Street	(Laburnum Row - Palm Road)	Secondary Distributor	TQ1 4	Torquay	C Class
C787	Union Street	(Palm Road - Higher Union Lane)	Secondary Distributor	TQ2 5	Torquay	C Class
C787	Union Street	(Higher Union Lane - Union Street Adj Town Hall)	Secondary Distributor	TQ2 5	Torquay	C Class
C787	Union Street	(Union Street Adj Town Hall - Tor Hill Road)	Secondary Distributor	TQ2 5	Torquay	C Class
C787	Newton Road	(Avenue Road - Vansittart Road)	Secondary Distributor	TQ2 5	Torquay	C Class
C787	Newton Road	(Vansittart Road - Barton Road)	Secondary Distributor	TQ2 5	Torquay	C Class
C787	Newton Road	(Barton Road - Newton Road)	Secondary Distributor	TQ2 5	Torquay	C Class
C787	Newton Road	(Newton Road - East Street)	Secondary Distributor	TQ2 5	Torquay	C Class
C787	Newton Road	(Newton Road - South Street)	Secondary Distributor	TQ1 4	Torquay	C Class
C787	Newton Road	(South Street - Union Street)	Secondary Distributor	TQ2 5	Torquay	C Class
C788	Manor Road	(Warbro Road - Cary Park)	Secondary Distributor	TQ1 3	Torquay	C Class
C788	Manor Road	(Cary Park - Stanley Road)	Secondary Distributor	TQ1 3	Torquay	C Class
C788	Manor Road	(Stanley Road - Babbacombe Road)	Secondary Distributor	TQ1 3	Torquay	C Class
C788	St Marychurch Road	(Westhill Road - Manor Road)	Secondary Distributor	TQ1 3	Torquay	C Class
C788	Westhill Road	(Teignmouth Road - Shelley Avenue)	Secondary Distributor	TQ1 4	Torquay	C Class
C788	Westhill Road	(Shelley Avenue - Westhill Road Adj 90)	Secondary Distributor	TQ1 4	Torquay	C Class
C788	Westhill Road	(Westhill Road Adj 90 - Chatto Road)	Secondary Distributor	TQ1 4	Torquay	C Class
C788	Westhill Road	(Chatto Road - St Margarets Avenue)	Secondary Distributor	TQ1 4	Torquay	C Class
C788	Westhill Road	(St Margarets Avenue - St Marychurch Road)	Secondary Distributor	TQ1 4	Torquay	C Class
C789	Ellacombe Church Road	(Ellacombe Church Road - Hoxton Road)	Secondary Distributor	TQ1 1	Torquay	C Class
C789	Ellacombe Church Road	(Ellacombe Church Road Roundabout - Lower Ellacombe Church Road)	Secondary Distributor	TQ1 1	Torquay	C Class

Road number	Street name	Junction section	Type	Postcode prefix	Town	Class type
C789	Ellacombe Church Road	(Lower Ellacombe Church Road - Woodville Road)	Secondary Distributor	TQ1 1	Torquay	C Class
C789	Ellacombe Church Road	(Woodville Road - Ellacombe Church Road Adj 82)	Secondary Distributor	TQ1 1	Torquay	C Class
C789	Ellacombe Church Road	(Ellacombe Church Road Adj 82 - Lower Ellacombe Church Road)	Secondary Distributor	TQ1 1	Torquay	C Class
C789	Ellacombe Church Road	(Lower Ellacombe Church Road - Carlton Road)	Secondary Distributor	TQ1 1	Torquay	C Class
C789	Ellacombe Church Road	(Carlton Road - Carlton Road Rear)	Secondary Distributor	TQ1 1	Torquay	C Class
C789	Ellacombe Church Road	(Carlton Road Rear - Windsor Road)	Secondary Distributor	TQ1 1	Torquay	C Class
C789	Hoxton Road	(Princes Road - Ellacombe Church Road)	Secondary Distributor	TQ1 1	Torquay	C Class
C789	Market Street	(Union Street - Pimlico)	Secondary Distributor	TQ1 1	Torquay	C Class
C789	Market Street	(Pimlico - Albert Road)	Secondary Distributor	TQ1 3	Torquay	C Class
C789	Market Street	(Albert Road - Castle Lane)	Secondary Distributor	TQ1 3	Torquay	C Class
C789	Princes Road	(Potters Hill - Ellacombe Road)	Secondary Distributor	TQ1 3	Torquay	C Class
C789	Princes Road	(Ellacombe Road - Bethel Terrace)	Secondary Distributor	TQ1 3	Torquay	C Class
C789	Princes Road	(Bethel Terrace - Victoria Road)	Secondary Distributor	TQ1 1	Torquay	C Class
C789	Princes Road	(Victoria Road - Warberry Vale)	Secondary Distributor	TQ1 1	Torquay	C Class
C789	Princes Road	(Warberry Vale - Hoxton Road)	Secondary Distributor	TQ1 1	Torquay	C Class
C789	Reddenhill Road	(Windsor Road - Reddenhill Road Adj 40)	Secondary Distributor	TQ1 3	Torquay	C Class
C789	Reddenhill Road	(Reddenhill Road adj 40 - Quinta Road)	Secondary Distributor	TQ1 3	Torquay	C Class
C789	Reddenhill Road	(Quinta Road - Lyme View Road)	Secondary Distributor	TQ1 3	Torquay	C Class
C789	Reddenhill Road	(Lyme View Road - Cary Avenue)	Secondary Distributor	TQ1 3	Torquay	C Class
C789	Reddenhill Road	(Cary Avenue - Perinville Road Rear)	Secondary Distributor	TQ1 3	Torquay	C Class
C789	Reddenhill Road	(Perinville Road Rear - St Annes Road)	Secondary Distributor	TQ1 3	Torquay	C Class
C789	Reddenhill Road	(St Annes Road - St Annes Road Rear)	Secondary Distributor	TQ1 3	Torquay	C Class
C789	Reddenhill Road	(St Annes Road Rear 33 - Babbacombe Road)	Secondary Distributor	TQ1 3	Torquay	C Class
C789	Windsor Road	(Kenwyn Road - Reddenhill Road Rear)	Secondary Distributor	TQ1 1	Torquay	C Class
C789	Windsor Road	(Reddenhill Road Rear - Ellacombe Church Road)	Secondary Distributor	TQ1 1	Torquay	C Class
C790	St Marychurch Road	(Castle Circus - Lymington Road)	Secondary Distributor	TQ1 3	Torquay	C Class
C790	St Marychurch Road	(Lymington Road - Ash Hill Road)	Secondary Distributor	TQ1 3	Torquay	C Class
C790	St Marychurch Road	(Ash Hill Road - Furzehill Road)	Secondary Distributor	TQ1 3	Torquay	C Class
C790	St Marychurch Road	(Furzehill Road - Hatfield Road)	Secondary Distributor	TQ1 3	Torquay	C Class
C790	St Marychurch Road	(Hatfield Road - Upton Hill)	Secondary Distributor	TQ1 3	Torquay	C Class
C790	St Marychurch Road	(Upton Hill - Bronshill Road)	Secondary Distributor	TQ1 3	Torquay	C Class
C790	St Marychurch Road	(Bronshill Road - Locksley Close)	Secondary Distributor	TQ1 3	Torquay	C Class
C790	St Marychurch Road	(Locksley Close - Cedar Court Road)	Secondary Distributor	TQ1 3	Torquay	C Class
C790	St Marychurch Road	(Cedar Court Road - Forest Road)	Secondary Distributor	TQ1 3	Torquay	C Class
C790	St Marychurch Road	(Forest Road - Westhill Avenue)	Secondary Distributor	TQ1 3	Torquay	C Class
C790	St Marychurch Road	(Westhill Avenue - Plainmoor Road)	Secondary Distributor	TQ1 3	Torquay	C Class
C790	St Marychurch Road	(Plainmoor Road - Fortune Way)	Secondary Distributor	TQ1 3	Torquay	C Class
C790	St Marychurch Road	(Fortune Way - Warbro Road)	Secondary Distributor	TQ1 3	Torquay	C Class
C791	Bolton Street	(Rea Barn Road - Windmill Hill)	Secondary Distributor	TQ5 9	Brixham	C Class
C791	Bolton Street	(Windmill Hill - Mount Pleasant Road)	Secondary Distributor	TQ5 9	Brixham	C Class
C791	Bolton Street	(Mount Pleasant Road - Glenmore Road)	Secondary Distributor	TQ5 9	Brixham	C Class
C791	Bolton Street	(Glenmore Road - New Road)	Secondary Distributor	TQ5 9	Brixham	C Class
C791	Drew Street	(Horsepool Street - Home Close)	Secondary Distributor	TQ5 9	Brixham	C Class
C791	Drew Street	(Home Close - Knick Knack Lane)	Secondary Distributor	TQ5 9	Brixham	C Class
C791	Drew Street	(Knick Knack Lane - Penn Lane)	Secondary Distributor	TQ5 9	Brixham	C Class
C791	Drew Street	(Penn Lane - Castor Road)	Secondary Distributor	TQ5 9	Brixham	C Class
C791	Greenswood Road	(Drew Street - Burton Street)	Secondary Distributor	TQ5 9	Brixham	C Class
C791	Milton Street	(Mill Lane - Milton Street)	Secondary Distributor	TQ5 0	Brixham	C Class
C791	Milton Street	(Milton Street - Elizabeth Avenue))	Secondary Distributor	TQ5 0	Brixham	C Class

Road number	Street name	Junction section	Type	Postcode prefix	Town	Class type
C791	Milton Street	(Elizabeth Avenue - Packhall Lane)	Secondary Distributor	TQ5 0	Brixham	C Class
C791	Milton Street	(Packhall Lane - Milton Park)	Secondary Distributor	TQ5 0	Brixham	C Class
C791	Milton Street	(Milton Park - Southdown Avenue)	Secondary Distributor	TQ5 0	Brixham	C Class
C791	Milton Street	(Southdown Avenue - Summer Lane)	Secondary Distributor	TQ5 0	Brixham	C Class
C791	Milton Street	(Summer Lane - Nut Tree Court)	Secondary Distributor	TQ5 0	Brixham	C Class
C791	Milton Street	(Nut Tree Court - Upton Manor Road)	Secondary Distributor	TQ5 0	Brixham	C Class
C791	Milton Street	(Upton Manor Road - Horsepool Street)	Secondary Distributor	TQ5 0	Brixham	C Class
C791	Kingswear Road	(Dartmouth Road - Hill Head Park)	Secondary Distributor	TQ5 0	Brixham	C Class
C791	Kingswear Road	(Hill Head Park - Raddicombe Drive)	Secondary Distributor	TQ5 0	Brixham	C Class
C791	Kingswear Road	(Raddicombe Drive - Gattery Lane)	Secondary Distributor	TQ5 0	Brixham	C Class
C791	Kingswear Road	(Gattery Lane - Mill Lane)	Secondary Distributor	TQ5 0	Brixham	C Class
C80	Monksbridge Road	(Greenover Road - Mathill Road)	Link Road	TQ5 0	Brixham	C Class
C806	Abbey Road	(Fleet Street - Rock Road)	Secondary Distributor	TQ2 5	Torquay	C Class
C806	Abbey Road	(Rock Road - Melville Street)	Secondary Distributor	TQ2 5	Torquay	C Class
C806	Abbey Road	(Melville Street - Warren Road)	Secondary Distributor	TQ2 5	Torquay	C Class
C806	Abbey Road	(Warren Road - St Lukes Road)	Secondary Distributor	TQ2 5	Torquay	C Class
C806	Abbey Road	(St Lukes Road - Croft Hill)	Secondary Distributor	TQ2 5	Torquay	C Class
C806	Abbey Road	(Croft Hill - Burrridge Lane)	Secondary Distributor	TQ2 5	Torquay	C Class
C806	Abbey Road	(Burrridge Lane - Tor Church Road)	Secondary Distributor	TQ2 5	Torquay	C Class
C806	Castle Circus	(Lymington Road - St Marychurch Road)	Secondary Distributor	TQ1 3	Torquay	C Class
C806	Castle Circus	(St Marychurch Road - Castle Road)	Secondary Distributor	TQ1 3	Torquay	C Class
C806	Castle Circus	(Castle Road - Tor Hill Road)	Secondary Distributor	TQ1 3	Torquay	C Class
C806	Falkland Road	(Walnut Road - Bridge Road)	Secondary Distributor	TQ2 5	Torquay	C Class
C806	Falkland Road	(Bridge Road - Belgrave Road)	Secondary Distributor	TQ2 5	Torquay	C Class
C806	Fleet Street	(Union Street - Pimlico)	Secondary Distributor	TQ1 1	Torquay	C Class
C806	Lucius Street	(Belgrave Road - Scarborough Place)	Secondary Distributor	TQ2 5	Torquay	C Class
C806	Lucius Street	(Scarborough Place - Tor Church Road)	Secondary Distributor	TQ2 5	Torquay	C Class
C806	Lymington Road	(Trematon Avenue - Castle Circus)	Secondary Distributor	TQ1 3	Torquay	C Class
C806	Lymington Road	(Castle Circus - St Marychurch Road)	Secondary Distributor	TQ1 3	Torquay	C Class
C806	Lymington Road	(Trematon Avenue - Sunbury Hill)	Secondary Distributor	TQ1 3	Torquay	C Class
C806	Lymington Road	(Sunbury Hill - Lymington Road Adj 75)	Secondary Distributor	TQ1 4	Torquay	C Class
C806	Lymington Road	(Lymington Road Adj 75 - Roundabout)	Secondary Distributor	TQ1 4	Torquay	C Class
C806	Lymington Road	(Lymington Road - Upton Road)	Secondary Distributor	TQ1 4	Torquay	C Class
C806	Lymington Road	(Lymington Road Roundabout - Lymington Road Adj 159)	Secondary Distributor	TQ1 4	Torquay	C Class
C806	Lymington Road	(Lymington Road Adj 159 - Upton Hill)	Secondary Distributor	TQ1 3	Torquay	C Class
C806	Lymington Road	(Lymington Road Roundabout - Upton Hill Road Rear)	Secondary Distributor	TQ1 3	Torquay	C Class
C806	Lymington Road	(Upton Hill Road Rear - Upton Road Rear)	Secondary Distributor	TQ1 4	Torquay	C Class
C806	Lymington Road	(Upton Road Rear - Upton Road)	Secondary Distributor	TQ1 4	Torquay	C Class
C806	Lymington Road	(Upton Road - Hill View Terrace)	Secondary Distributor	TQ1 4	Torquay	C Class
C806	Lymington Road	(Hill View Terrace - Parkfield Road)	Secondary Distributor	TQ1 4	Torquay	C Class
C806	Lymington Road	(Parkfield Road - Wrights Lane)	Secondary Distributor	TQ1 4	Torquay	C Class
C806	Lymington Road	(Wrights Lane - Pennys Hill)	Secondary Distributor	TQ1 4	Torquay	C Class
C806	Lymington Road	(Pennys Hill - Teignmouth Road)	Secondary Distributor	TQ1 4	Torquay	C Class
C806	Tor Church Road	(Lucius Street - Tor Hill Road)	Secondary Distributor	TQ2 5	Torquay	C Class
C806	Tor Hill Road	(Tor Church Road - Madeira Place)	Secondary Distributor	TQ2 5	Torquay	C Class
C806	Tor Hill Road	(Madeira Place - Morgan Avenue)	Secondary Distributor	TQ2 5	Torquay	C Class
C806	Tor Hill Road	(Morgan Avenue - Madeira Place)	Secondary Distributor	TQ2 5	Torquay	C Class
C806	Tor Hill Road	(Madeira Place - Higher Union Lane)	Secondary Distributor	TQ2 5	Torquay	C Class
C806	Tor Hill Road	(Higher Union Lane - Tor Hill Road)	Secondary Distributor	TQ2 5	Torquay	C Class
C806	Tor Hill Road	(Union Street - Tor Hill Road)	Secondary Distributor	TQ2 5	Torquay	C Class
C806	Tor Hill Road	(Tor Hill Road - Factory Row)	Secondary Distributor	TQ2 5	Torquay	C Class
C806	Union Street	(Factory Row - Tor Hill Road)	Secondary Distributor	TQ2 5	Torquay	C Class
C806	Union Street	(Factory Row - Union Street)	Secondary Distributor	TQ2 5	Torquay	C Class

Road number	Street name	Junction section	Type	Postcode prefix	Town	Class type
C806	Union Street	(Castle Road - Union Street)	Secondary Distributor	TQ1 3	Torquay	C Class
C806	Union Street	(Union Street - Temperance Street)	Secondary Distributor	TQ1 3	Torquay	C Class
C806	Union Street	(Temperance Street - Market Street)	Secondary Distributor	TQ1 3	Torquay	C Class
C806	Union Street	(Market Street - Lower Union Lane)	Pedestrianised	TQ1 1	Torquay	C Class
C806	Union Street	(Lower Union Lane - Fleet Street)	Pedestrianised	TQ1 1	Torquay	C Class
C806	Teignmouth Road	(Lymington Road - Teignmouth Road)	Secondary Distributor	TQ1 4	Torquay	C Class
C818	Newton Road	(Edginswell Lane - Riviera Way)	Secondary Distributor	TQ2 7	Torquay	C Class
C818	Newton Road	(Edginswell Lane - Rougemont Avenue)	Secondary Distributor	TQ2 7	Torquay	C Class
C818	Newton Road	(Rougemont Avenue - Cadewell Lane)	Secondary Distributor	TQ2 7	Torquay	C Class
C818	Newton Road	(Cadewell Lane - Lowe's Bridge)	Secondary Distributor	TQ2 7	Torquay	C Class
C818	Newton Road	(Lowe's Bridge - Riviera Way)	Secondary Distributor	TQ2 7	Torquay	C Class
C87	Langdon Lane	(Stoke Gabriel Road - Langdon Lane Adj 33)	Link Road	TQ5 0	Brixham	C Class
C87	Langdon Lane	(Langdon Lane Adj 33 - 29)	Link Road	TQ5 0	Brixham	C Class
C87	Langdon Lane	(Langdon Lane - Higher Warborough Road)	Link Road	TQ5 0	Brixham	C Class
C87	Stoke Gabriel Road	(Stoke Road - Kiln Road)	Link Road	TQ5 0	Brixham	C Class
C87	Stoke Gabriel Road	(Kiln Road - The Orchards)	Link Road	TQ5 0	Brixham	C Class
C87	Stoke Gabriel Road	(The Orchards - Old Road)	Link Road	TQ5 0	Brixham	C Class
C87	Stoke Gabriel Road	(Old Road - Langdon Lane)	Link Road	TQ5 0	Brixham	C Class
C87	Stoke Gabriel Road	(Langdon Lane - The Roundings)	Link Road	TQ5 0	Brixham	C Class
C87	Stoke Gabriel Road	(Slade Lane - The Roundings)	Link Road	TQ5 0	Brixham	C Class
C87	Stoke Gabriel Road	(Slade Lane - Greenway Road)	Link Road	TQ5 0	Brixham	C Class
C87	Greenway Road	(Manor Vale Road - Churston Close)	Link Road	TQ5 0	Brixham	C Class
C87	Greenway Road	(Churston Close - Dartmouth Road)	Link Road	TQ5 0	Brixham	C Class
C91	Barton Hill Road	(Hele Road - Dorchester Grove)	Secondary Distributor	TQ2 8	Torquay	C Class
C91	Barton Hill Road	(Dorchester Grove - Barton Hill Way)	Secondary Distributor	TQ2 8	Torquay	C Class
C91	Barton Hill Road	(Barton Hill Way - South Parks Road)	Secondary Distributor	TQ2 8	Torquay	C Class
C91	Barton Hill Road	(South Parks Road - Barton Hill Road rear)	Secondary Distributor	TQ2 8	Torquay	C Class
C91	Barton Hill Road	(Barton Hill Road rear - Danvers Road)	Secondary Distributor	TQ2 8	Torquay	C Class
C91	Barton Hill Road	(Danvers Road - Salisbury Avenue)	Secondary Distributor	TQ2 8	Torquay	C Class
C91	Barton Hill Road	(Salisbury Avenue - Horace Road)	Secondary Distributor	TQ2 8	Torquay	C Class
C91	Barton Hill Road	(Horace Road - Beechfield Avenue)	Secondary Distributor	TQ2 8	Torquay	C Class
C91	Barton Hill Road	(Beechfield Avenue - Happaway Road)	Secondary Distributor	TQ2 8	Torquay	C Class
C91	Barton Hill Road	(Happaway Road - Clennon Lane)	Secondary Distributor	TQ2 8	Torquay	C Class
C91	Barton Hill Road	(Clennon Lane - Hatchcombe Lane)	Secondary Distributor	TQ2 8	Torquay	C Class
C91	Barton Hill Road	(Hatchcombe Lane - Suncrest Close)	Secondary Distributor	TQ2 8	Torquay	C Class
C91	Barton Hill Road	(Suncrest Close - Ashleigh Close)	Secondary Distributor	TQ2 8	Torquay	C Class
C91	Barton Hill Road	(Ashleigh Close - Isaacs Road)	Secondary Distributor	TQ2 8	Torquay	C Class
C91	Barton Hill Road	(Isaacs Road - Barton Hill Road)	Secondary Distributor	TQ2 8	Torquay	C Class
C91	Barton Hill Road	(Barton Hill Road - Broom Park)	Secondary Distributor	TQ2 8	Torquay	C Class
C91	Barton Hill Road	(Broom Park - Fore Street)	Secondary Distributor	TQ2 8	Torquay	C Class
C91	Barton Hill Road	(Fore Street - Bottompark Lane)	Secondary Distributor	TQ2 8	Torquay	C Class
C91	Barton Hill Road	(Bottompark Lane - Jacks Lane)	Secondary Distributor	TQ2 8	Torquay	C Class
C91	Barton Hill Road	(Jacks Lane - Barchington Avenue)	Secondary Distributor	TQ2 8	Torquay	C Class
C91	Barton Hill Road	(Barchington Avenue - Chalfield Close)	Secondary Distributor	TQ2 8	Torquay	C Class
C91	Barton Hill Road	(Chalfield Close - Lawn Close)	Secondary Distributor	TQ2 8	Torquay	C Class
C91	Barton Hill Road	(Lawn Close - Kingskerswell Road)	Secondary Distributor	TQ2 8	Torquay	C Class
C91	Claddon Lane	(Greathill Road - Barton Hill)	Link Road	TQ2 8	Torquay	C Class
C91	Claddon Lane	(Barton Hill - Higher Rocombe)	Link Road	TQ2 8	Torquay	C Class
C91	Claddon Lane	(Higher Rocombe - Teignmouth Road)	Link Road	TQ1 4	Torquay	C Class
C91	Great Hill Road	(Kingskerswell Road - Overdale Close)	Secondary Distributor	TQ2 8	Torquay	C Class
C91	Great Hill Road	(The Mount - Great Hill Road)	Link Road	TQ2 8	Torquay	C Class
C91	Barton Road	(Newton Road - Oakhill Road)	Link Road	TQ1 4	Torquay	C Class
C91	Barton Road	(Oakhill Road - St Vincents Road)	Link Road	TQ1 4	Torquay	C Class
C91	Barton Road	(St Vincents Road - Valley View Close)	Link Road	TQ1 4	Torquay	C Class
C91	Barton Road	(Valley View Close - St Michaels Road)	Link Road	TQ1 4	Torquay	C Class

Road number	Street name	Junction section	Type	Postcode prefix	Town	Class type
C91	Barton Road	(St Michaels Road - Briwere Road)	Link Road	TQ1 4	Torquay	C Class
C91	Barton Road	(Briwere Road - Barton Road Roundabout)	Link Road	TQ1 4	Torquay	C Class
C91	Barton Road	(Cricketfield Road - Old Woods Hill)	Secondary Distributor	TQ2 7	Torquay	C Class
C91	Barton Road	(Old Woods Hill - Kirkstead Close)	Secondary Distributor	TQ2 7	Torquay	C Class
C91	Barton Road	(Kirkstead Close - Barton Road adj No 57)	Secondary Distributor	TQ2 7	Torquay	C Class
C91	Barton Road	(Barton Road adj No 57 - Charlotte Close)	Secondary Distributor	TQ2 7	Torquay	C Class
C91	Barton Road	(Charlotte Close - Woodland Road)	Secondary Distributor	TQ2 7	Torquay	C Class
C91	Barton Road	(Woodland Road - Fairfield Road)	Secondary Distributor	TQ2 7	Torquay	C Class
C91	Barton Road	(Fairfield Road - Audley Avenue)	Secondary Distributor	TQ2 7	Torquay	C Class
C91	Barton Road	(Audley Avenue - Powderham Road)	Secondary Distributor	TQ2 7	Torquay	C Class
C91	Barton Road	(Powderham Road - Hele Road)	Secondary Distributor	TQ2 7	Torquay	C Class
C91	Great Hill Road	(Overdale Close - The Mount)	Secondary Distributor	TQ2 8	Torquay	C Class

This document can be made available in other languages and formats.
For more information, please contact highways@torbay.gov.uk.
