

An aerial photograph of Torbay, showing a dense residential area on the left, a large body of water (Torre Bay) on the right, and a mix of green fields and urban development in the center. A railway line with a viaduct is visible in the lower center. The text 'Transport In Torbay' is overlaid in large white letters on the right side of the image.

Transport In Torbay

A Climate Conversation

TORBAY COUNCIL

Where are we and what have we done so far?

“A new dawn for transport”



TORBAY COUNCIL

The recent story...





Taking charge: the electric vehicle infrastructure strategy



Future of Mobility: Urban Strategy

Moving Britain Ahead



Gear Change

A bold vision for cycling and walking



Bus Back Better



Net Zero Strategy: Build Back Greener

October 2021



TORBAY COUNCIL

Bay Trails
Torbay Local Cycling and Walking Infrastructure Plan (LCWIP)

April 2021

TORBAY ELECTRIC VEHICLE STRATEGY

Final Draft

TORBAY EV STRATEGY

Local Transport Action Plan 2021-2026
Moving towards net-zero



Torbay Council
ZERO EMISSION BUSES
Feasibility Study



TP11794
MARCH 2022

PUBLIC

One Torbay: Working for all Torbay
Community and Corporate Plan 2019 – 2023



Torbay Bus Service Improvement Plan

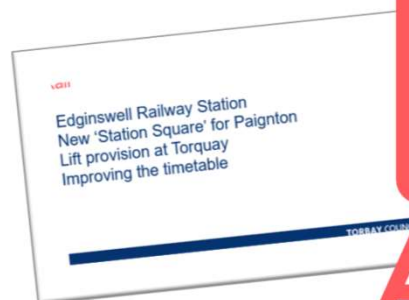
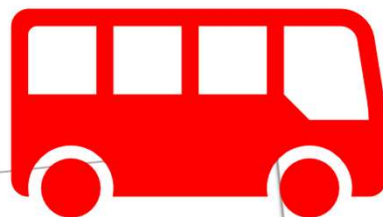
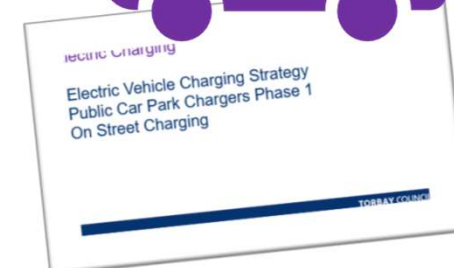
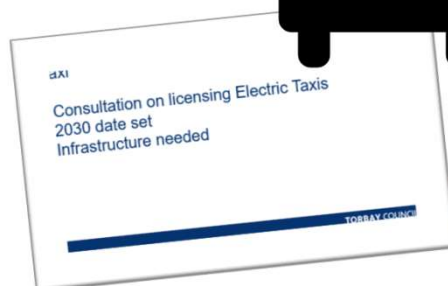
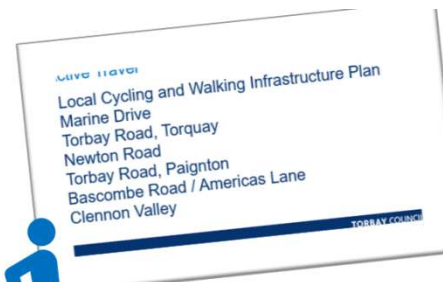
October 2021



DEVON CARBON PLAN



Decarbonising Transport in Torbay



Rail

- Edginswell Railway Station
- New 'Station Square' for Paignton
- Lift provision at Torquay
- Improving the timetable

Active Travel

- Local Cycling and Walking Infrastructure Plan
- Marine Drive
- Torbay Road, Torquay
- Newton Road
- Torbay Road, Paignton
- Bascombe Road / Americas Lane
- Clennon Valley

Bus

- Bus Service Improvement Plan
- Bus Partnership
- New Living Roof Shelters
- Zero Emission Bus Plan

Electric Charging

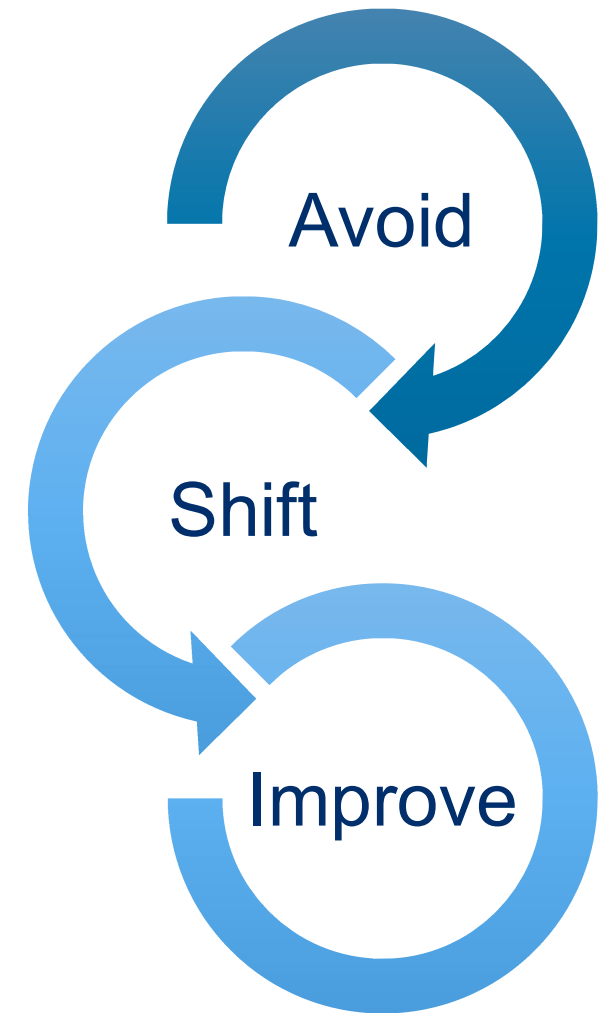
- Electric Vehicle Charging Strategy
- Public Car Park Chargers Phase 1
- On Street Charging

Taxi

- Consultation on licensing Electric Taxis
- 2030 date set
- Infrastructure needed

What next?

- Local Transport Decarbonisation Action Plan
 - Carbon Capturing
- Reduce the need
- Active and Shared Mobility
- Promote Public Transport
- Move to EV



An aerial photograph of the Torbay coastline. The image shows a large, vibrant blue bay with a sandy beach and a promenade. A marina filled with numerous white sailboats is visible on the right side. The background features a dense residential area with many houses and green spaces, extending to rolling hills under a clear sky.

We need...

To do more

To act now

Your help!

TORBAY COUNCIL