



Torbay Coast &  
Countryside Trust

*Climate Change: Nature-based Solutions*

Damian Offer  
Chief Executive

# *Climate Change: Nature-based Solutions*

1. Background
2. TCCT Approach
3. Challenges

Damian Offer  
Chief Executive

# Background

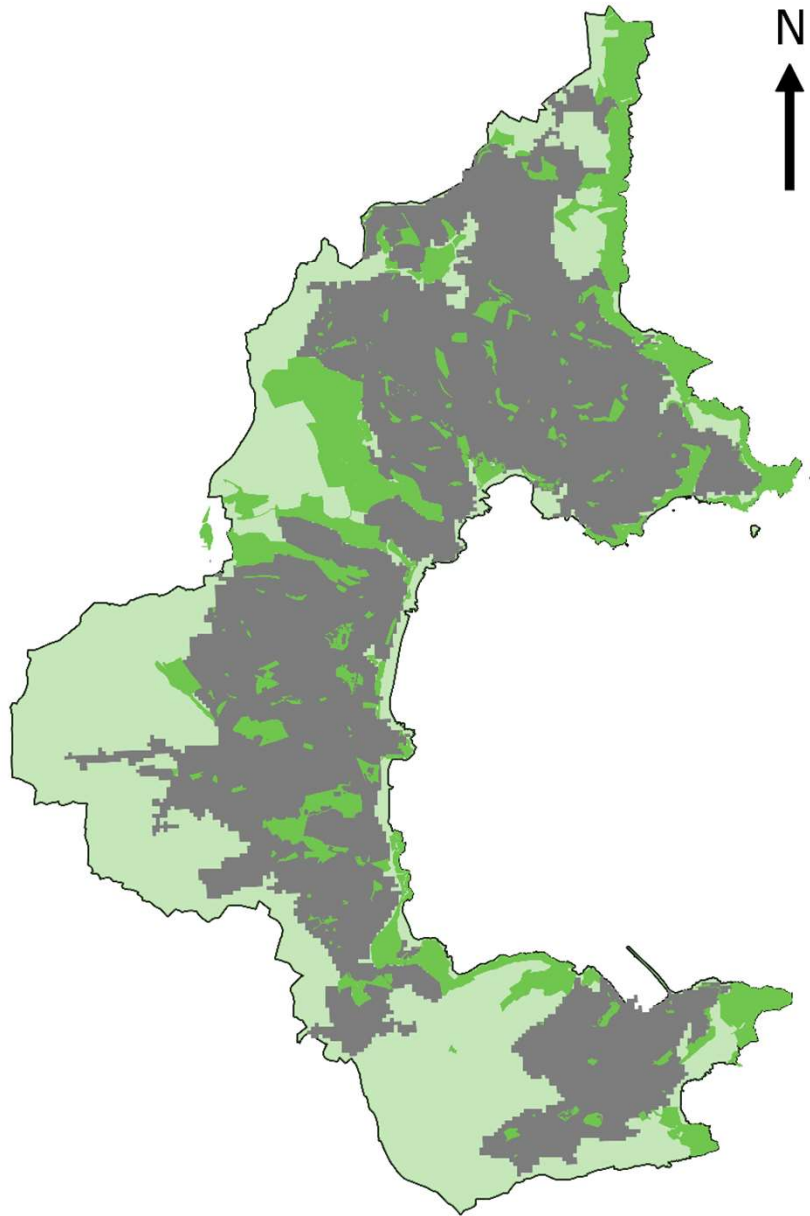
TCCT is an independent charity:

- Guardians of Torbay's special heritage for 20+ years;
- Protected, managed, restored and enhanced natural and built heritage (over 1,700a);
- Huge repository of knowledge and experience of Torbay's natural heritage and its management;
- Engaged with c.500k people about wildlife, environmental issues, food & farming and sustainable lifestyles.

# Background

## TCCT's Mission Statement

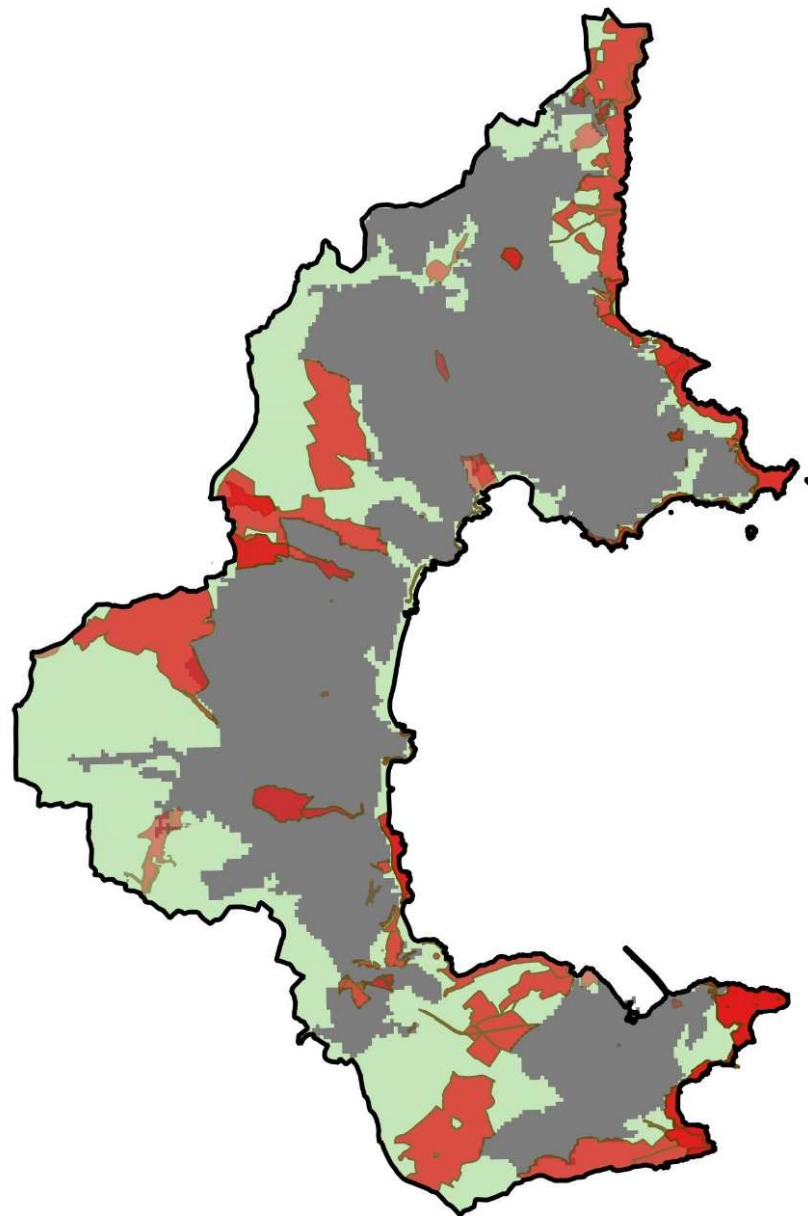
*“To protect land, conserve nature and strengthen the bonds between people# and the natural world of Torbay”*



Type	Area (ha.)	% of 6,287 ha
Built up area	3,200	51
Un-built area	3,100	49
Farmland	1,805	29
Woodland	440	7
Natural Heritage Designations	1,211	19
Accessible Greenspace	996	16

### Legend

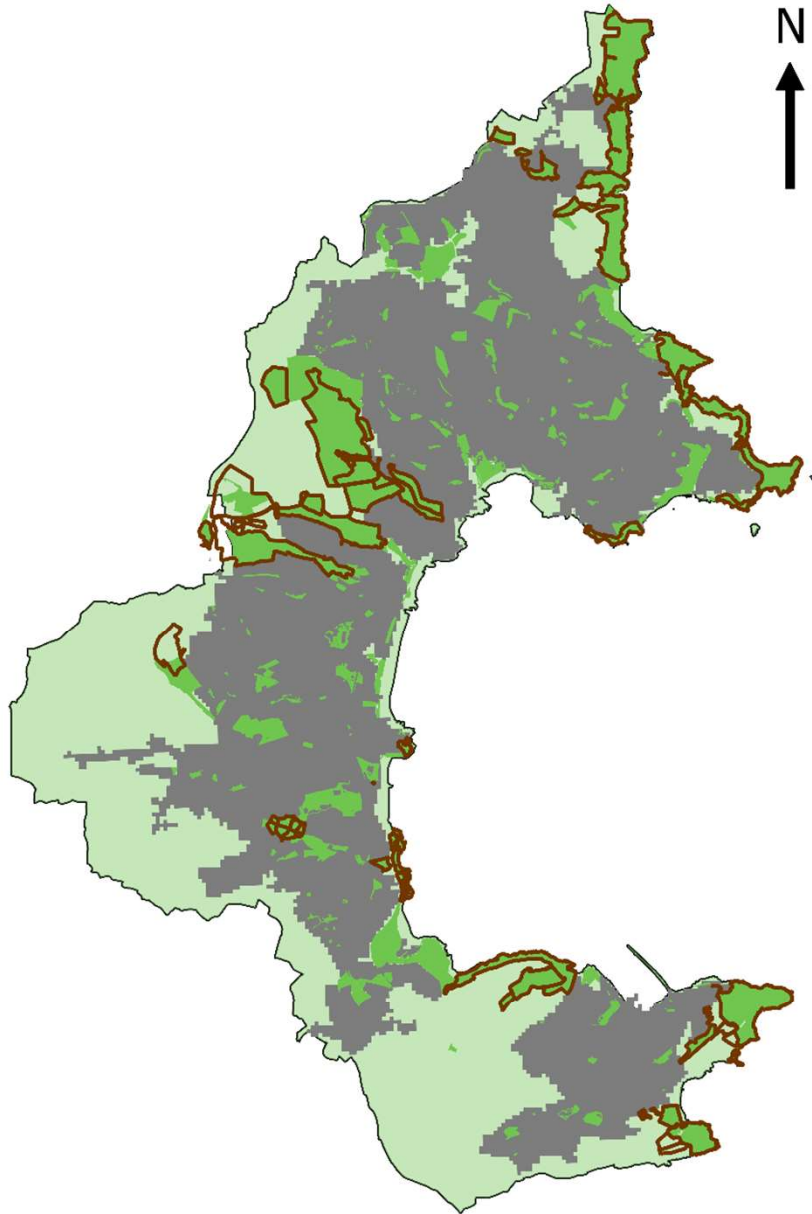
- Torbay Built-up Area
- Torbay\_Greenspace



Designation	#	ha.	%
Special Area of Conservation	1	65	1.0
National Nature Reserve	1	44	0.7
Site of Special Scientific Interest	12	181	2.9
Local Nature Reserve	4	147	2.3
County Wildlife Site	31	767	12.2
Regionally Important Geological Site	10	7	0.1
Local Wildlife Site	50	?	?

#### Legend

- Torbay Built-up Area 2011
- Torbay Un-built Area
- Natural Heritage Designation

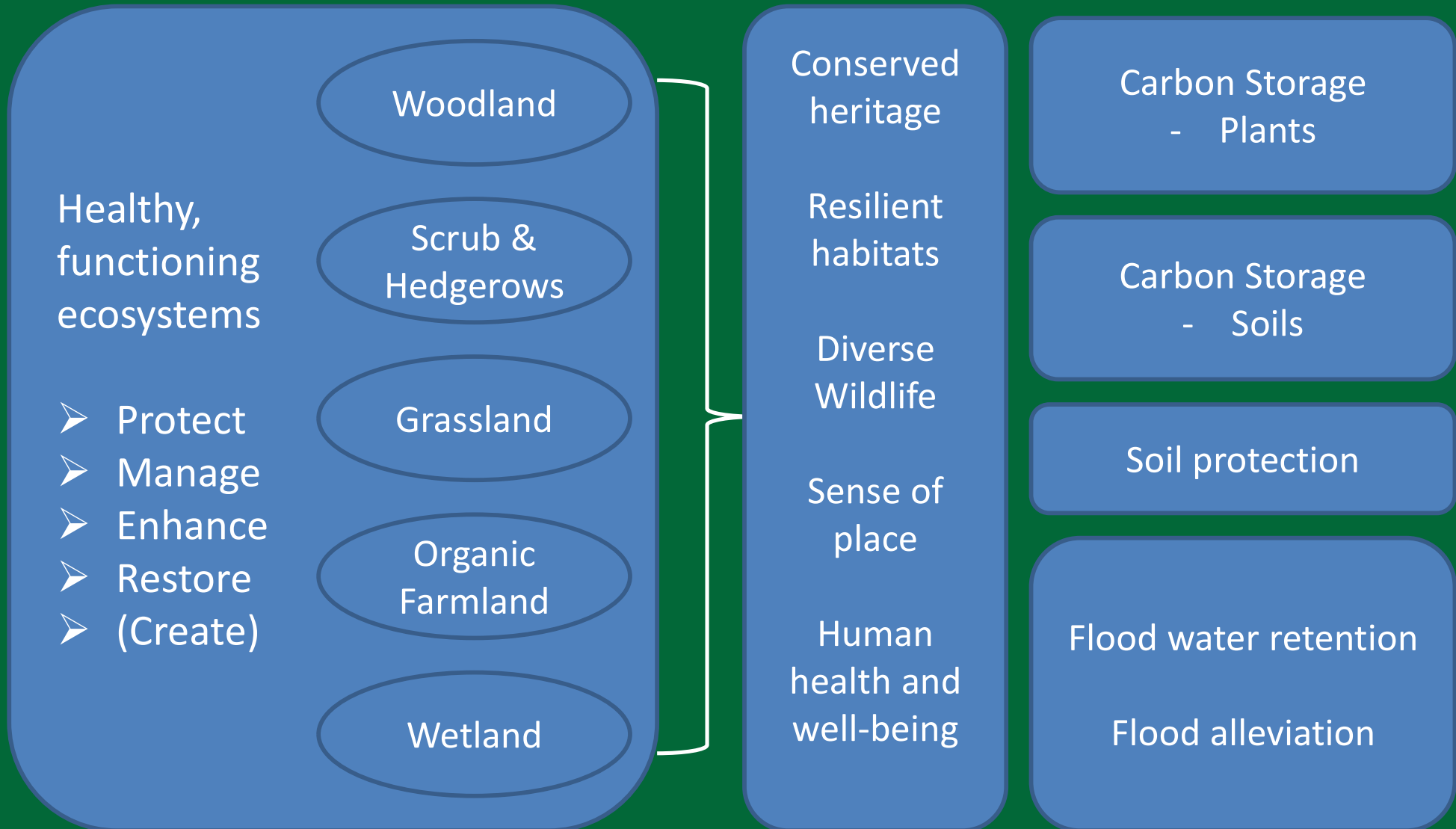


- *1,700a of land*
- *>50% of Torbay's coastline*
- *>76% of Public Open Space*
- *>88% of Natural Green Space*

#### Legend

- Torbay Built-up Area
- Torbay\_Greenspace
- TCCT Land 2022

# TCCT Approach



*Climate Change: Nature-based Solutions*



# TCCT Approach

	Ha	Protect, Enhance and Maintain natural ecosystem functions	
Woodland	170		
Scrubland & Hedgerows	?		
Grassland	338		
Organic Farmland	220		
Wetlands	?		

# TCCT Approach

	Ha	Protect, Enhance and Maintain natural ecosystem functions	
Woodland	170	✓	<ul style="list-style-type: none"> <li>• Replace conifers with native broadleaved</li> <li>• Plant new woodlands and trees</li> </ul>
Scrubland & Hedgerows	?		
Grassland	338		
Organic Farmland	220		
Wetlands	?		

# TCCT Approach

	Ha	Protect, Enhance and Maintain natural ecosystem functions	
Woodland	170	✓	<ul style="list-style-type: none"> <li>• Replace conifers with native broadleaved</li> <li>• Plant new woodlands and trees</li> </ul>
Scrubland & Hedgerows	?	✓	<ul style="list-style-type: none"> <li>• Manage scrub on rotation; transitional habitats</li> <li>• Favour thick, bushy hedges</li> <li>• Plant new hedges; lay existing hedges on rotation</li> </ul>
Grassland	338		
Organic Farmland	220		
Wetlands	?		

# TCCT Approach

	Ha	Protect, Enhance and Maintain natural ecosystem functions	
Woodland	170	✓	<ul style="list-style-type: none"> <li>• Replace conifers with native broadleaved</li> <li>• Plant new woodlands and trees</li> </ul>
Scrubland & Hedgerows	?	✓	<ul style="list-style-type: none"> <li>• Manage scrub on rotation; transitional habitats</li> <li>• Favour thick, bushy hedges</li> <li>• Plant new hedges; lay existing hedges on rotation</li> </ul>
Grassland	338	✓	<ul style="list-style-type: none"> <li>• Retain permanent grassland; create new grassland</li> <li>• Maintain low fertility levels; encourage diversity</li> <li>• Cut for hay and/or graze</li> </ul>
Organic Farmland	220		
Wetlands	?		

# TCCT Approach

	Ha	Protect, Enhance and Maintain natural ecosystem functions	
Woodland	170	✓	<ul style="list-style-type: none"> <li>• Replace conifers with native broadleaved</li> <li>• Plant new woodlands and trees</li> </ul>
Scrubland & Hedgerows	?	✓	<ul style="list-style-type: none"> <li>• Manage scrub on rotation; transitional habitats</li> <li>• Favour thick, bushy hedges</li> <li>• Plant new hedges; lay existing hedges on rotation</li> </ul>
Grassland	338	✓	<ul style="list-style-type: none"> <li>• Retain permanent grassland; create new grassland</li> <li>• Maintain low fertility levels; encourage diversity</li> <li>• Cut for hay and/or graze</li> </ul>
Organic Farmland	220	✓	<ul style="list-style-type: none"> <li>• Organic, extensive regime; native breeds</li> <li>• Environmental, social, commercial balance</li> <li>• Protect soil structure and organic content</li> <li>• Minimum tillage</li> </ul>
Wetlands	?		

# TCCT Approach

	Ha	Protect, Enhance and Maintain natural ecosystem functions	
Woodland	170	✓	<ul style="list-style-type: none"> <li>• Replace conifers with native broadleaved</li> <li>• Plant new woodlands and trees</li> </ul>
Scrubland & Hedgerows	?	✓	<ul style="list-style-type: none"> <li>• Manage scrub on rotation; transitional habitats</li> <li>• Favour thick, bushy hedges</li> <li>• Plant new hedges; lay existing hedges on rotation</li> </ul>
Grassland	338	✓	<ul style="list-style-type: none"> <li>• Retain permanent grassland; create new grassland</li> <li>• Maintain low fertility levels; encourage diversity</li> <li>• Cut for hay and/or graze</li> </ul>
Organic Farmland	220	✓	<ul style="list-style-type: none"> <li>• Organic, extensive regime; native breeds</li> <li>• Environmental, social, commercial balance</li> <li>• Protect soil structure and organic content</li> <li>• Minimum tillage</li> </ul>
Wetlands	?	✓	<ul style="list-style-type: none"> <li>• Minimal intervention</li> <li>• Extensive grazing</li> </ul>

# TCCT Approach

- Low carbon construction methods (e.g. straw bale buildings, larch planking roofs);
- Energy efficiency (insulation, double glazing, heat recovery units etc.);
- Occombe - 100kW Solar array, warm water solar;
- Biomass operation (wood chip);
- Reduced paper usage;
- Flexible working – reduced travel.

# TCCT Contributions/Aspirations

- Improve ecosystem functions where sub-optimal;
- Plant more woodland & trees (but must be right trees in right places);
- Move to electric machinery and vehicles;
- EV charging at Occombe;
- Expand biomass operation; biomass at Occombe;
- Expand solar array, install on other properties;
- Greater outreach on environmental issues and encouraging sustainable lifestyles.



# Challenges

- Limited land area – limits opportunities;
- Multiple competing priorities (development, amenity, recreation, wildlife, flood alleviation);
- Requires multi-agency cooperation;
- Cost of implementing changes and adopting new technology (e.g. renewables etc.);
- Some ‘solutions’ won’t be viable given local constraints (climate, topography etc.);