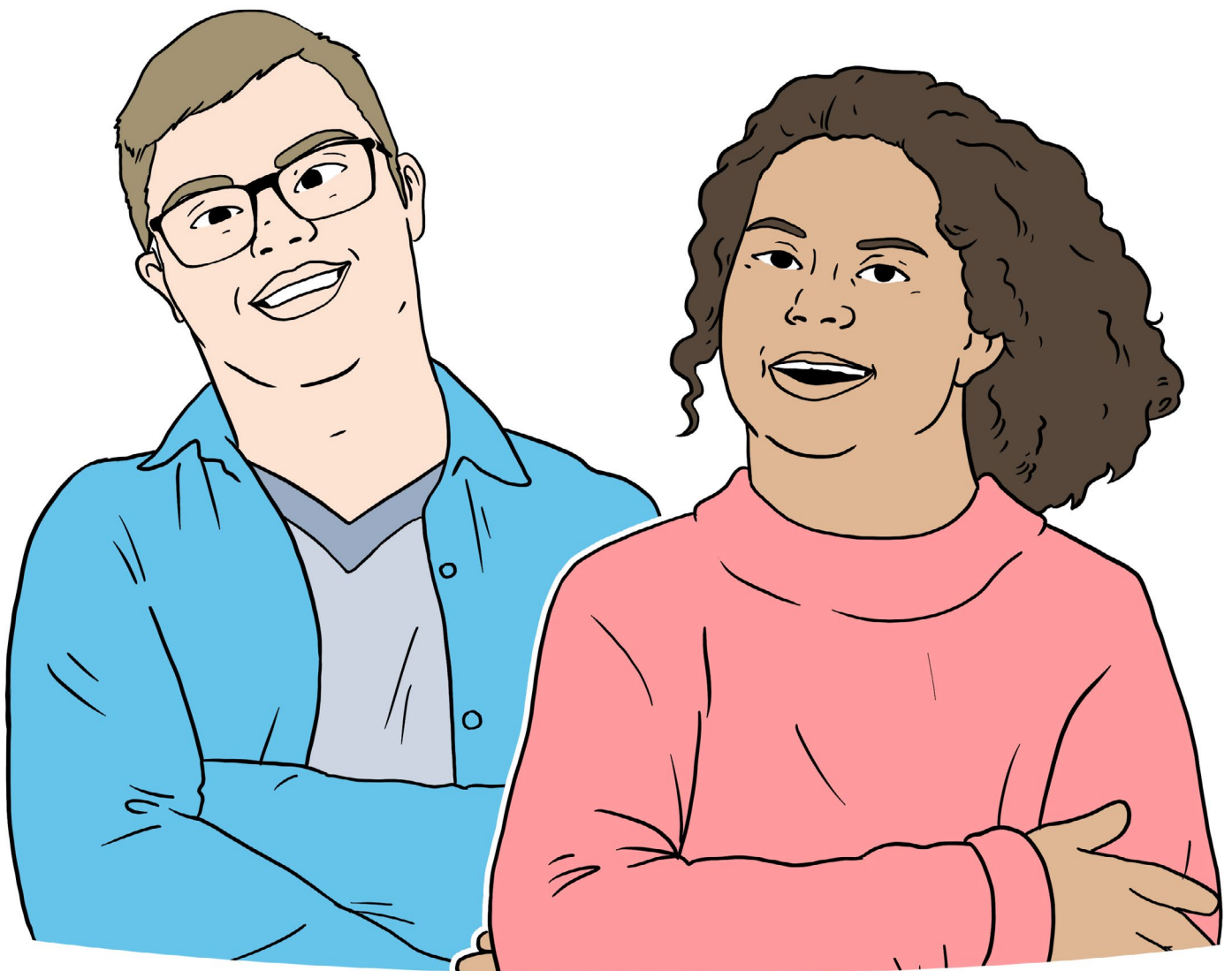


Torbay Local Area Written Statement of Action

easy read



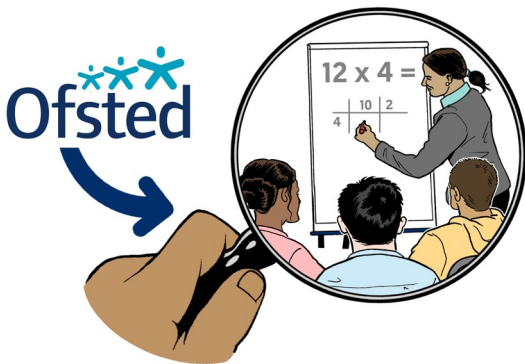
About this booklet



This booklet is about our plan to improve the services for children and young people with **Special Educational Needs and Disabilities (SEND)**.



Ofsted and the **Care Quality Commission** agreed to this plan in May 2022. It shows what we must do to improve and how to do it.



Ofsted stands for **Office for Standards in Education**. They inspect services that provide education.



The **Care Quality Commission (CQC)** is an organisation that works with the government to inspect health and social care services.



We had an inspection from Ofsted and the CQC in November 2021. This means they checked how well we were working.



They made a report with what they had found.



The report said that we needed to work better together with the people who use our services.

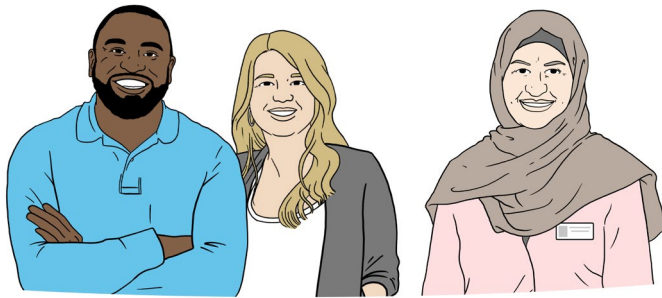


It also said that we needed to make this plan to help us improve.



This plan was written by Torbay Council with the NHS, and SEND Family Voice Torbay.

With help from:



Parents and carers



Voluntary organisations



Schools



Other organisations

Our promise



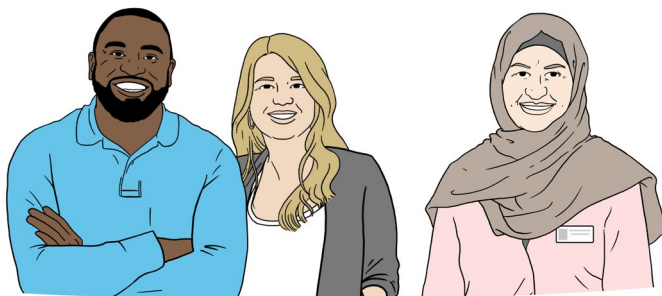
Torbay Council and the NHS must make sure this plan is completed.



To do this they will work closely with:



Children and young people



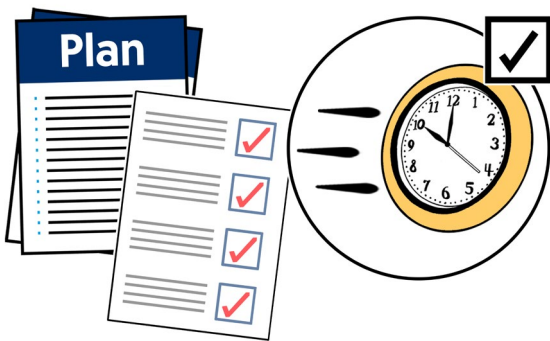
Parents and carers



Organisations and groups



We will make sure they can take part in making things better for the people we support.



We will do the things in this plan as quickly as possible.

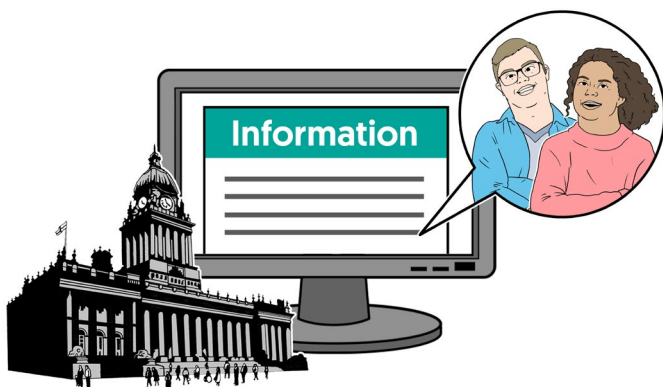


Some things will not take long. But other things might take longer because we must get them right and there is a lot to do.

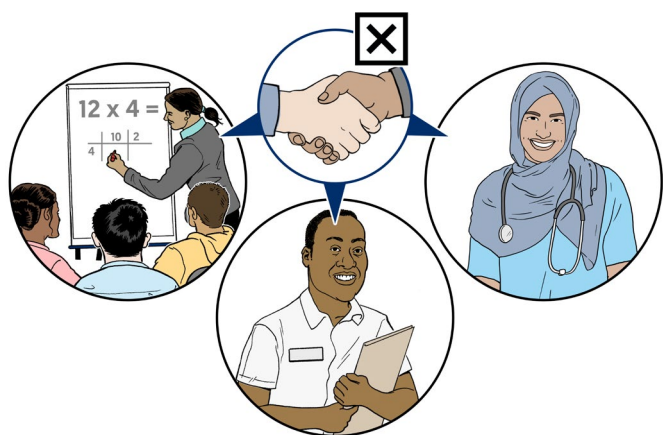


We will let people know how we are getting on with our plans using newsletters and the **Local Offer website**.

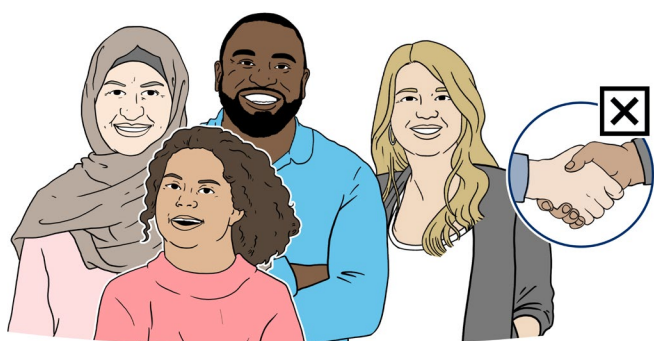
The Local Offer website is where you can get information for children and young people with special educational needs and disabilities. It is run by your local council.



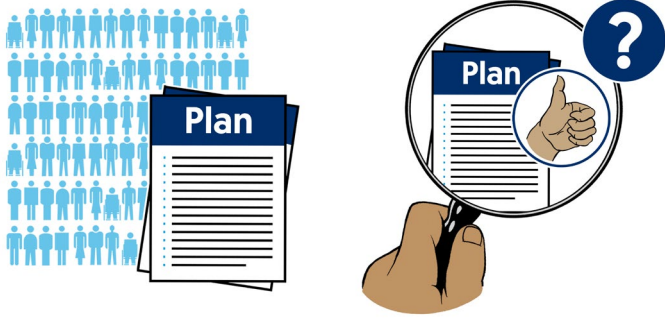
Working together



The report found that Education Services, Social Care and Health care had not been working closely together.



They had not been working closely with parents, carers and young people.

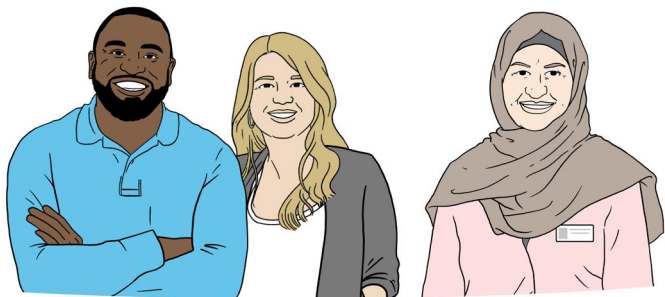


We have worked with lots of different people to make this plan, and we are working with them to make sure the plan works.

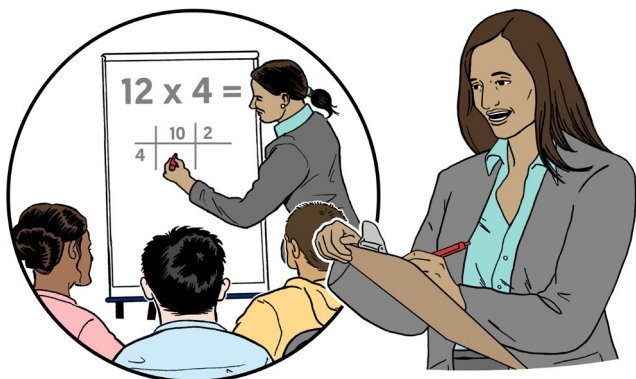


To make this plan we had workshops, and worked with over 500 people.

These included:



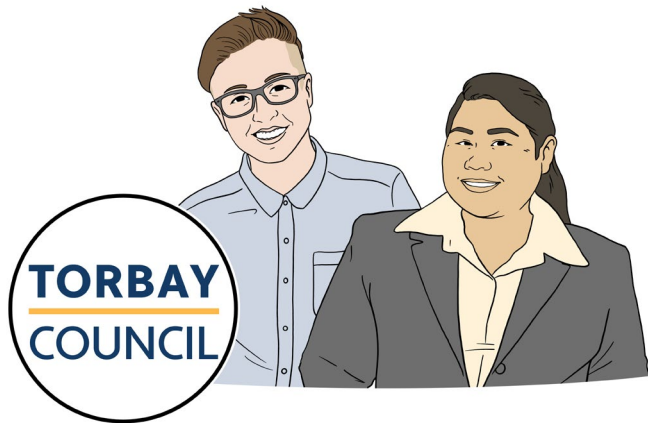
Parents and carers



Education staff



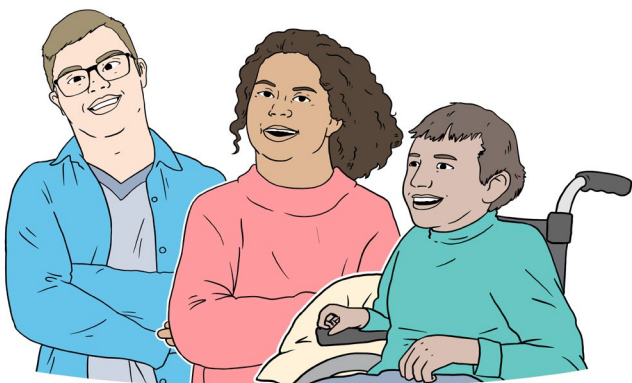
Health staff



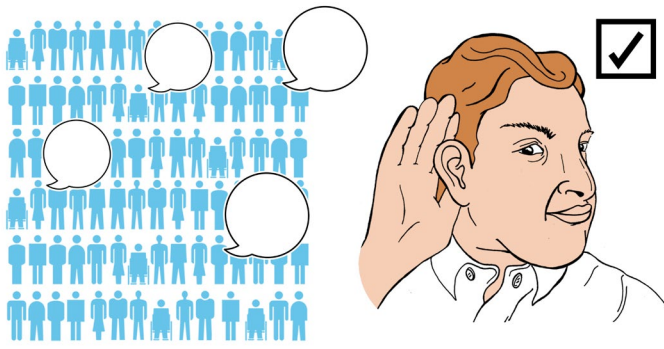
Staff from Torbay Council
Children's Services



Staff from the NHS

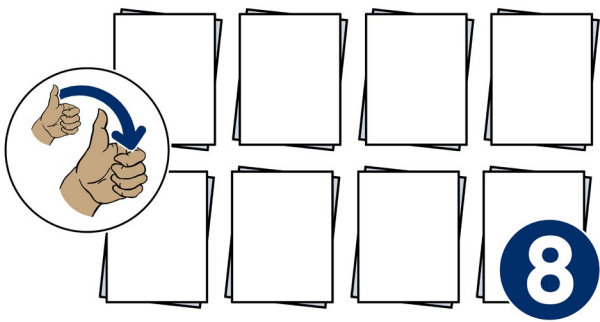


Comments from young
people

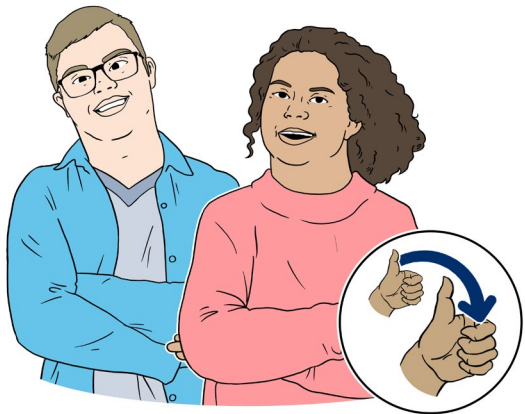


Everyone got a chance to speak and have their voice heard. What they said helped us to make the plan.

What do we have to do to improve and how?



We have split what we have to do to improve into 8 different areas.



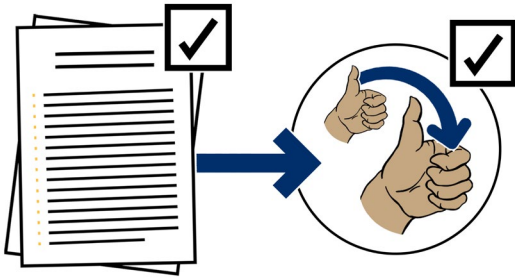
1. The SEND Strategy

Improve how we all work to help people with Special Educational Needs and/or Disability (SEND).

How we will do this:

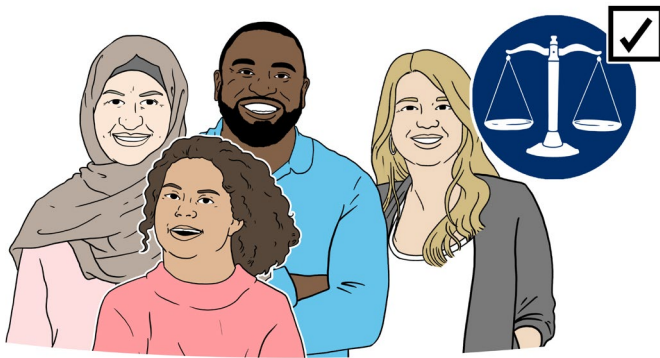
We will make a set of ideas of how to improve things for those with special needs and/or disability.





If everyone follows this set of ideas it will help make things better

2. Improve the culture in the Services



This means treating parents, carers, children and young people as equal partners.

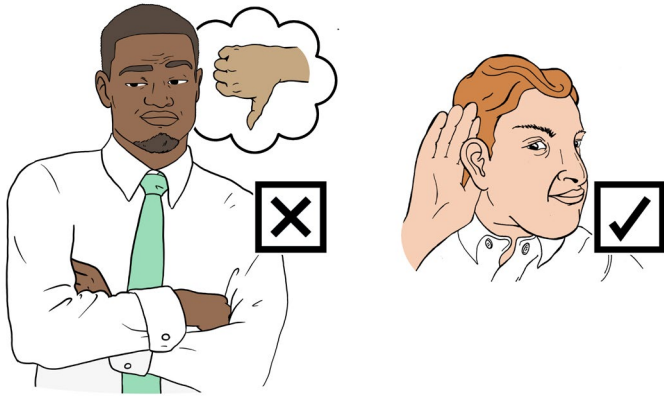
How we will do this:



We will plan how everyone in education, social care and health works with parents, carers and children.



Staff will **respect** the views and their experience of parents, carers and children.



Respecting someone's views means taking them seriously and listening to them.



We will make sure new staff agree to this plan as part of the application and interview process.



We will check that the plan is being followed.

3. Work together



All services should work more closely together to improve things for people with SEND.



How we will do this:

We will plan how all services in education, social care and health work together, so they understand what each other are doing.

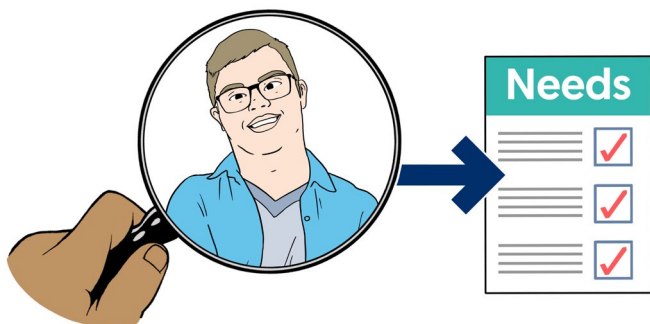
We will work to make everything we do easy to understand for young people and their families.

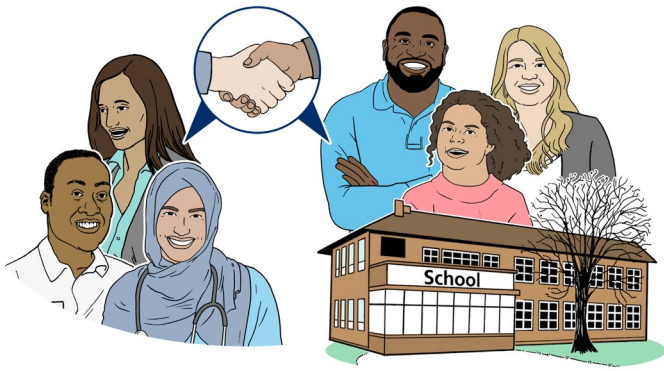
4. Identify needs

Identify people's needs early and put things in place to help.

How we will do this:

Too many young people have their needs identified too late.





Education, social care and health services will work with families, schools and other organisations to make sure that people's needs are identified as soon as possible.



This will mean we can put things in place to support them as soon as possible.



5. Improvement for 16+

Improve the **opportunities** for people with SEND after they are 16 years old.

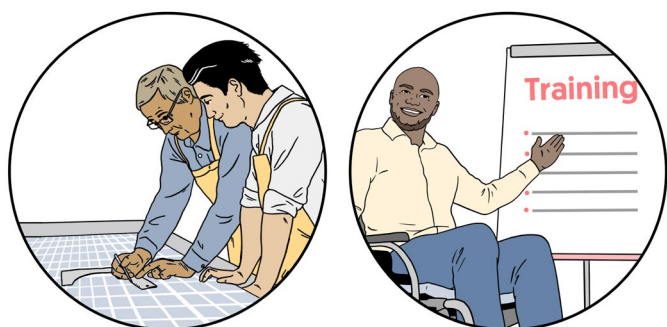


An **opportunity** is a chance to do something, or take part in something. Like training or learning to do a job.

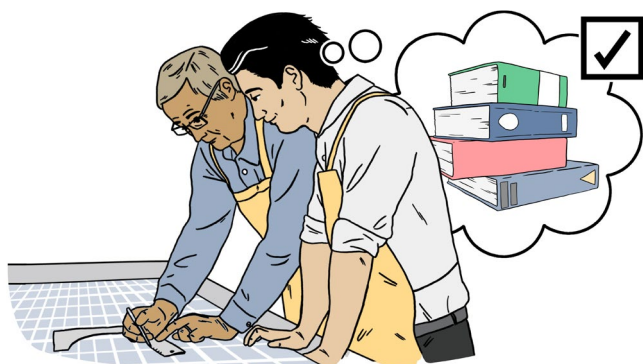
How we will do this:



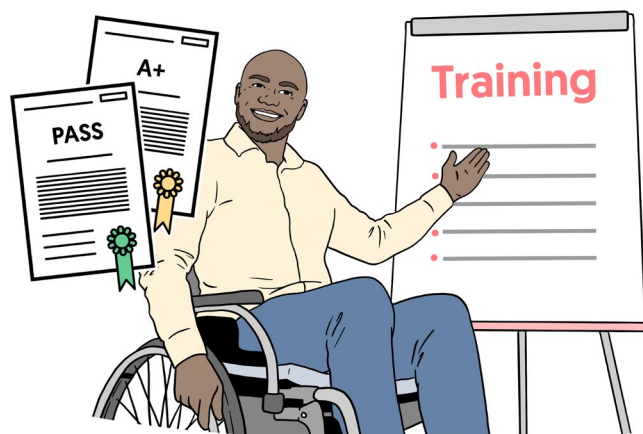
We will make things for people who are 16 years old, or older, to help them into employment.



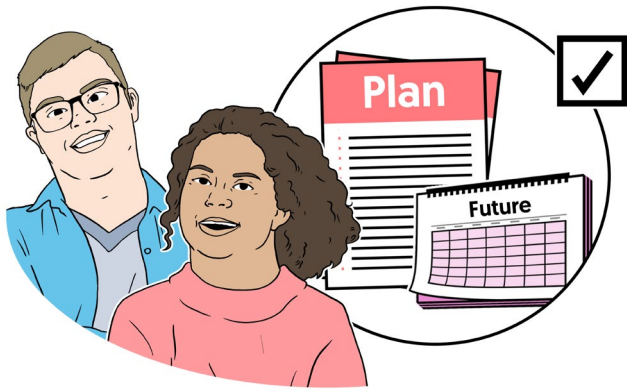
This will be things like **apprenticeships** and **school leaver schemes**.



An **apprenticeship** is a way of training a new worker. They will work along side a professional and learn on the job.



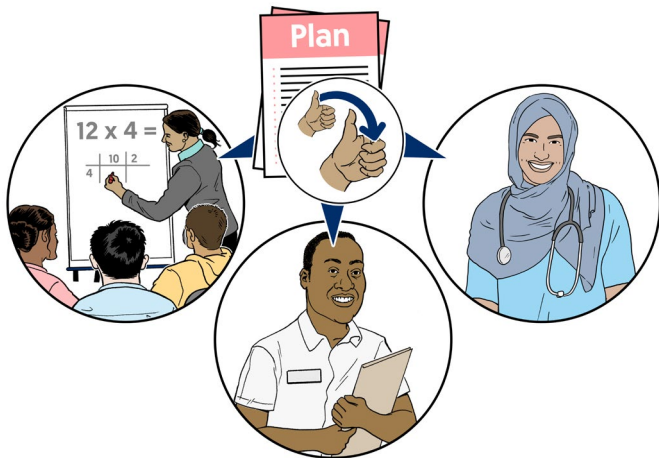
A **school leaver scheme** is a scheme you can join straight out of school. That offers training, and the chance to get a professional qualification while you are earning money.



Planning for young people's future will happen no matter what type of school they go to.

6. Improve plans

Improve the education, health and care plans for children and young people with SEND.



How we will do this:

We will improve the quality of Education, Health and Care Plans.

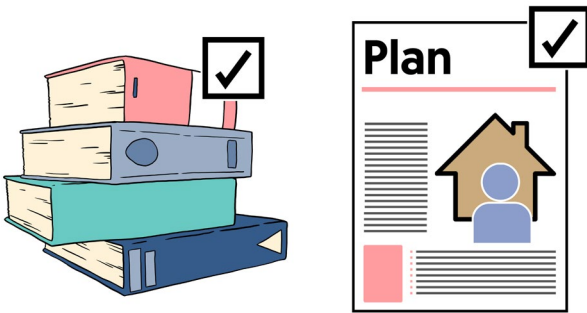


We will make sure that young people, parents and carers have a say in the plans.





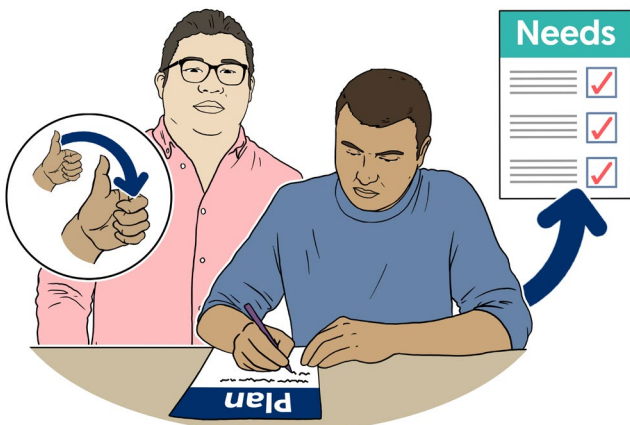
We will make sure that the people and organisations who deliver the plans work together.



We will make sure that they cover more than just education. We want them to support planning for independent living.



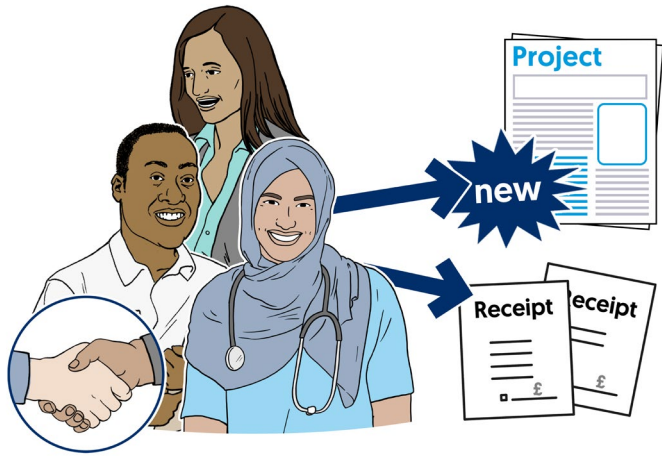
Plans will help young people to improve their lives.



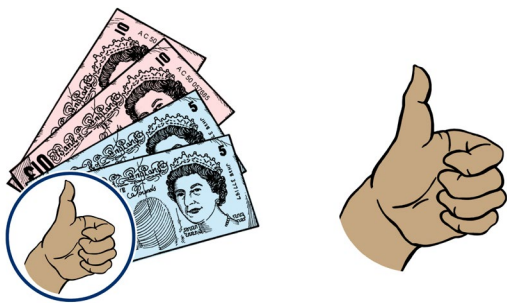
7. Joint commissioning

Joint commissioning means improving how we work together to put things in place to help people.

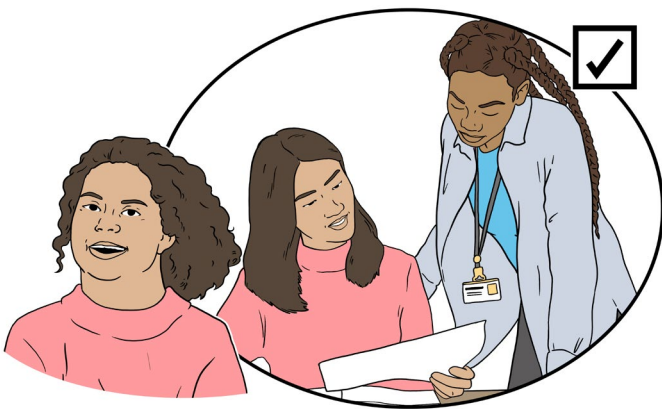
How we will do this:



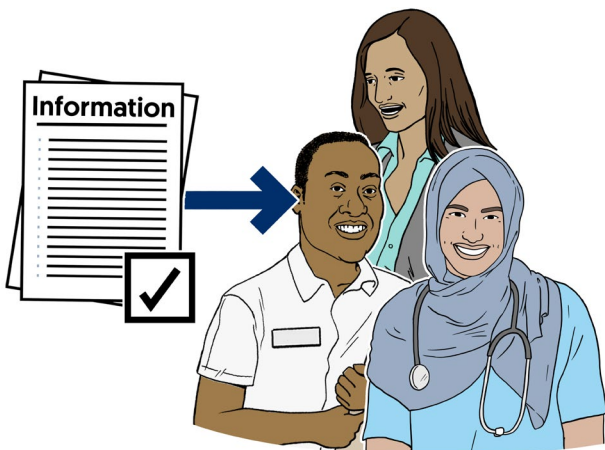
We will make sure that different services from education, health and social care work together when buying things or starting new work.



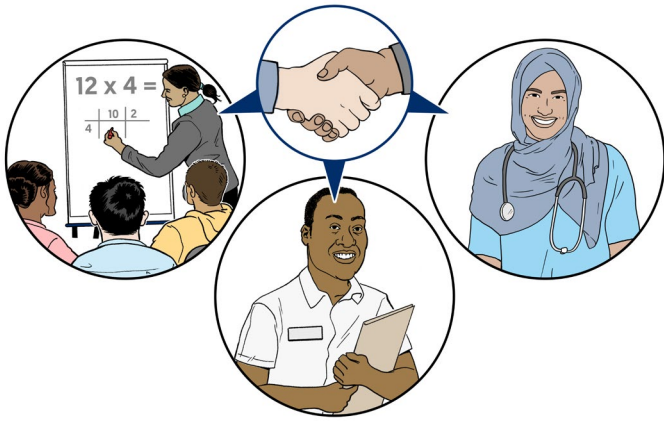
We will make sure that we get the best cost and quality for our services.



We will make sure that young people get the support they need.



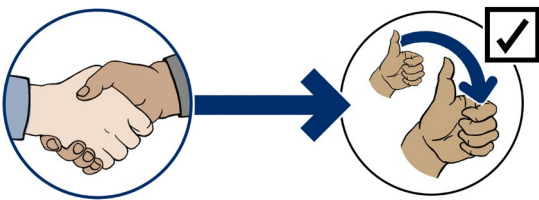
We will do this by making sure that education, health and social care services have all the information they need to make the right decisions.



This will mean that the different services have to work closely with each other.

8. Keep improving

Work together to make sure improvements can keep happening.

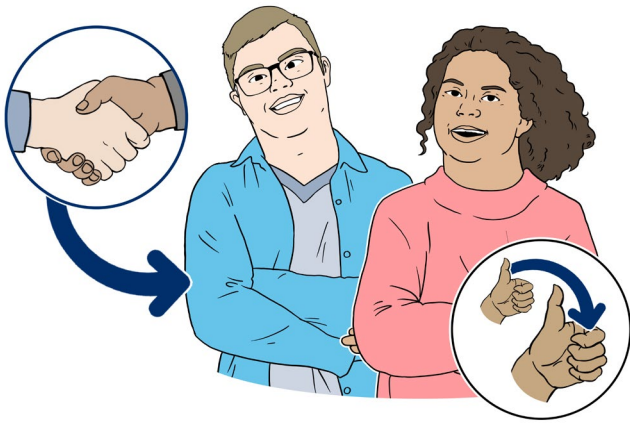


How we will do this:

An important part of our plan is needing to work together.



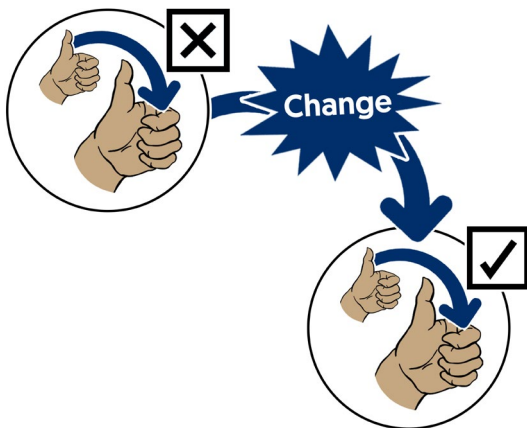
This means that young people, parents, carers, education, health and care services, schools, colleges, voluntary organisations all have a part to play.



We will all work together to make things better for children and young people.



We will keep checking that this is happening.



And we will make changes when it is not happening.

