





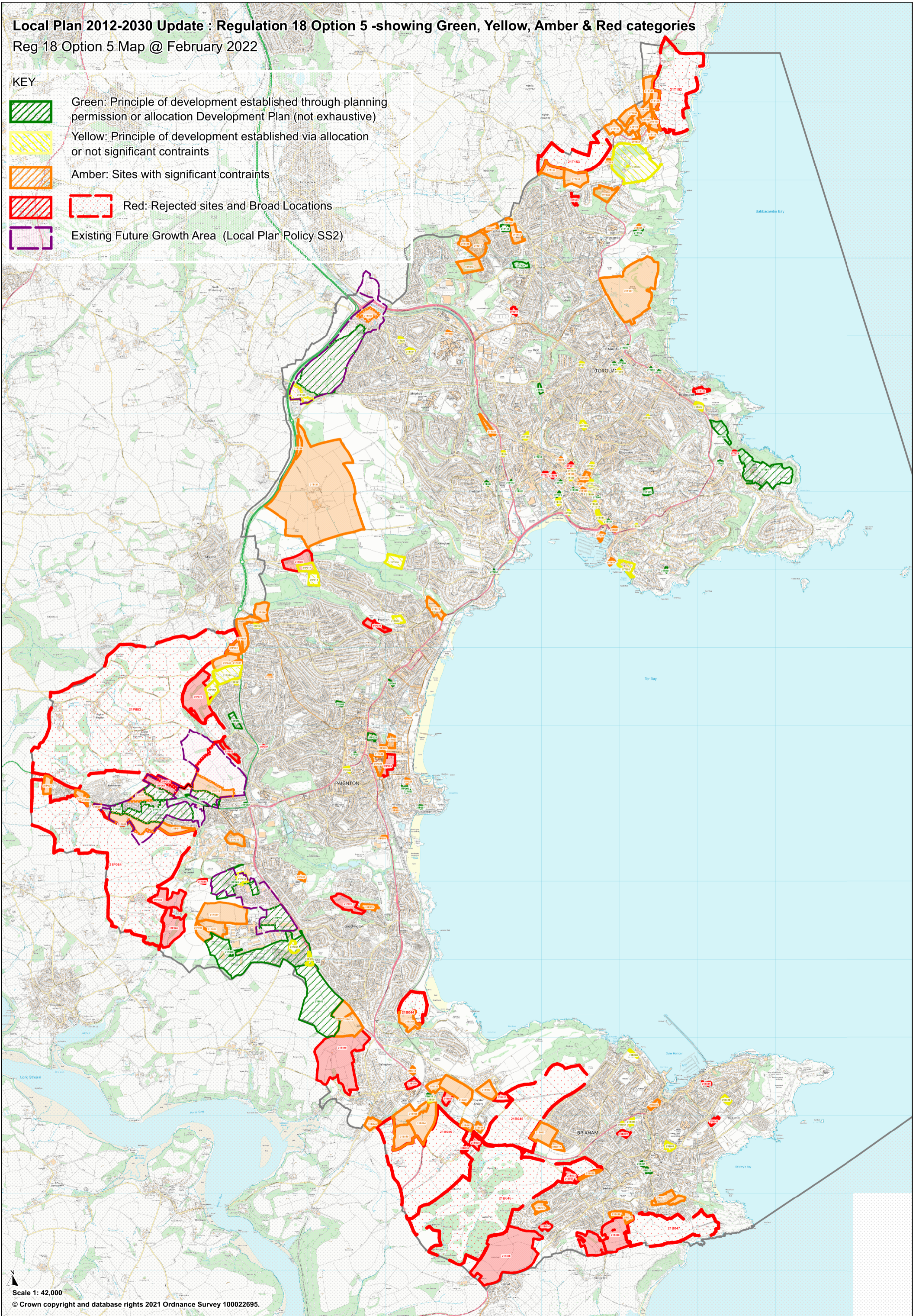


**Local Plan 2012-2030 Update : Regulation 18 Option 5 -showing Green, Yellow, Amber & Red categories**

Reg 18 Option 5 Map @ February 2022

**KEY**

-  Green: Principle of development established through planning permission or allocation Development Plan (not exhaustive)
-  Yellow: Principle of development established via allocation or not significant constraints
-  Amber: Sites with significant constraints
-  Red: Rejected sites and Broad Locations
-  Red: Rejected sites and Broad Locations
-  Existing Future Growth Area (Local Plan Policy SS2)



Scale 1: 42,000