

This presentation shows the development of our initial ideas into a concept design. It is not a finalised design; it is a starting point from which to engage.

More than just a sculpture, we aim to create the destination of dreams. A place of interaction, community, and wellbeing. What an incredible journey. What a fascinating story. What an amazing woman.

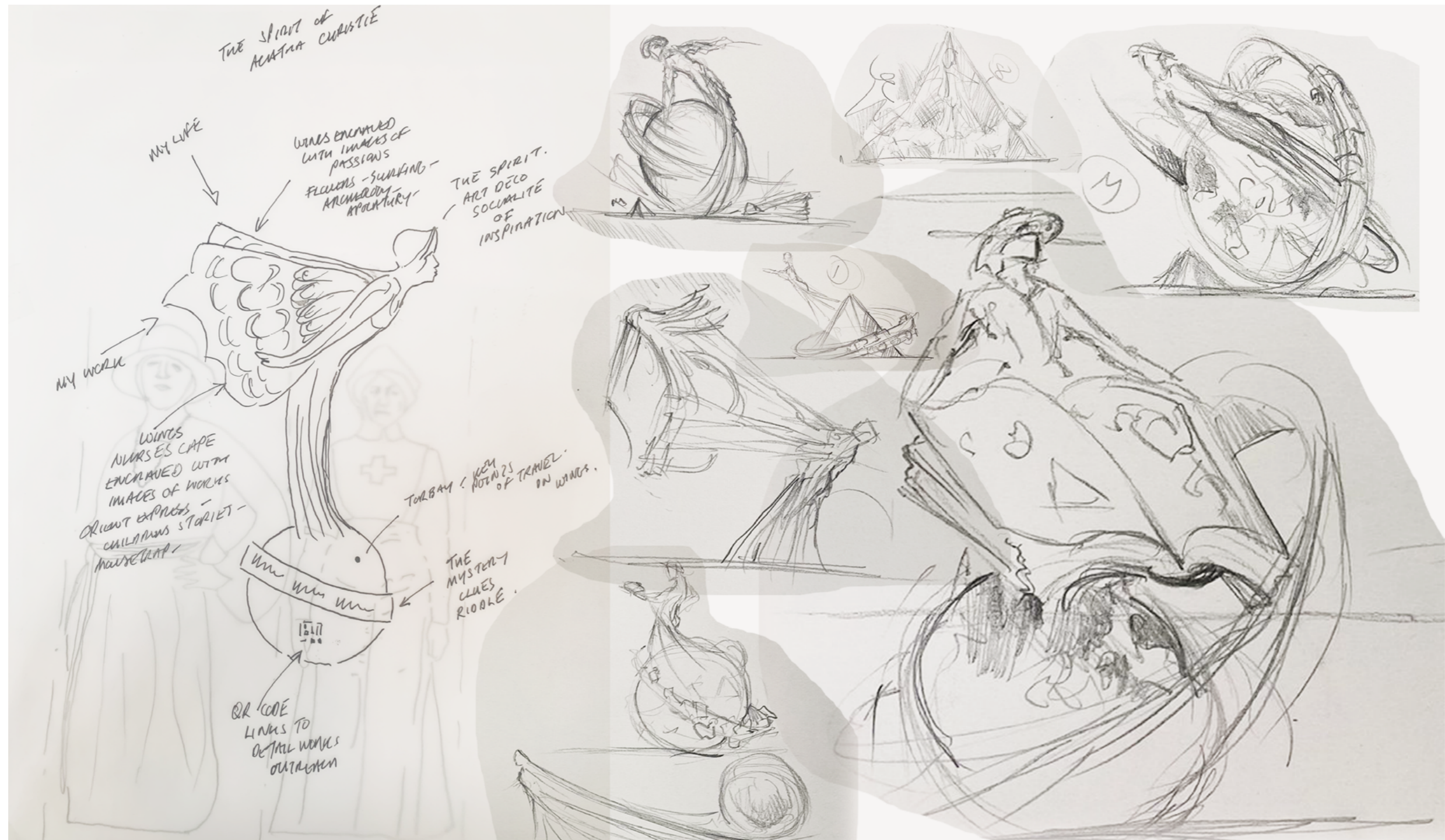
Our concept is inclusive and flexible, we are all part of the journey. We stand at the point of Inspiration. Together we can capture..

THE SPIRIT OF AGATHA CHRISTIE



CONCEPT DESIGN

Initial thoughts ideas and outline concept sketches

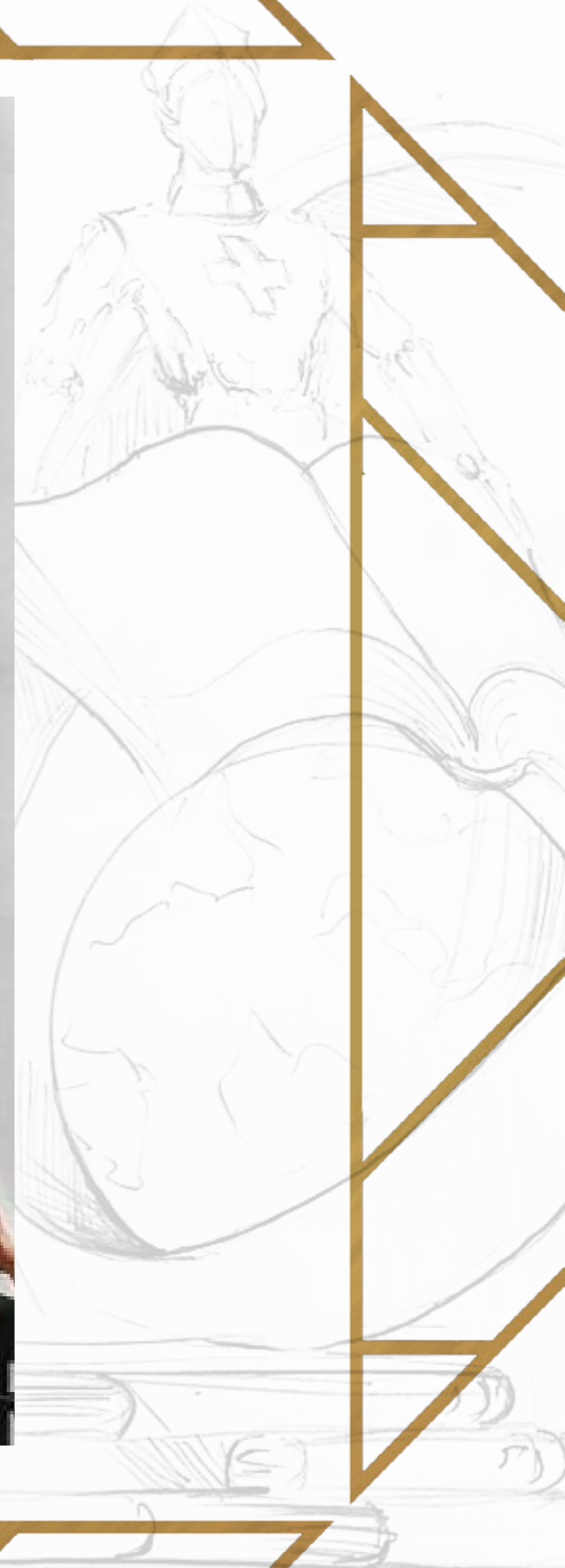


THE SPIRIT OF AGATHA CHRISTIE!
MIND MAP 1.



At this stage we are favouring Agatha being dressed as a nurse with direct reference to her time spent in the town's Red Cross Hospital, the large book carries the message of wellbeing. The pose of this image is brought to life and evolves when cross referenced to her socialite life of fun, passion, and excitement. A pose that evokes inspiration. A statue that inspires others. We aim to encourage the public to read and interact with her story.

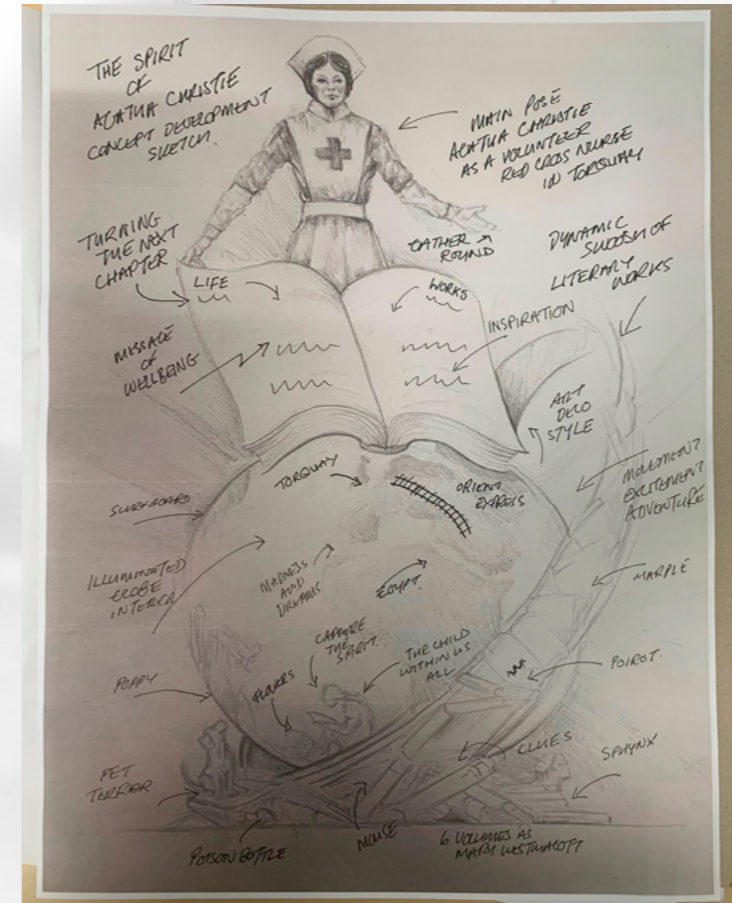




DEVELOPING THE CONCEPT

Since our initial submission of concept sketch designs, research and theory our concept has moved forward in the form of a maquette which helps to explore our ideas.

The most important aspect of our concept is to create the spirit of dynamism, excitement, movement and life within the sculpture. It needs to connect and engage and reflect Agatha's adventurous personality. It is about Agatha Christie as a woman in the round, her eminent sense of wellbeing is brought forward through the image of Agatha as a nurse whilst working in Torquay. An image of course which resonates so strongly with the inspiration of the NHS today.



The formative upbringing in Torquay evolves into a life of exploration and adventure which is portrayed in the sculpture, a fascinating journey which expands into her becoming the worlds best selling author.

To the base are six books, a reference to the six novels written under the pseudonym of Mary Westmacott on which are placed a series of characters from her youth. Agatha's pet terrier dog sits at foot, a roller skate , a polo ball , a poppy,flowers and a surfboard are integrated into the base surround. All these characters have a clue or meaning to discover.

The spirit of Agatha Christie is viewed from within an open globe. Illuminated with light and then dimmed to reveal an image of the young Agatha sitting under a cowslip as a child full of spirit, dreams and imaginary friends. The child within us all. We are inside her mind at the place where it all started.



Carved into the globe on the top surface are the key places visited along her life's journey. Orchestrated with Torquay centred to the front, areas of influence some of which then emanate into her literary works such as Egypt, Turkey and Iraq are picked out. A train track shows the route of the Orient Express. The sculpture is designed to be tactile and is embedded with braille throughout so that the story reaches out to as many audiences as possible. School children can take rubbings off the bronze and explore the stories.

Above us leaning forward is Agatha dressed as a Red Cross nurse in the Voluntary Aid Detachment during the First World War. The tunic and pose has stunning movement and style symptomatic of the period between Art Nouveau and Deco, it has a sense of mischief within it, as if asking you to gather round and listen to her stories or nursery rhymes. There is a poppy sculpted into the tunic that signifies the Belgian soldiers and refugees she looked after in the First World War. The giant book depicts both her life on one page and her works on the other. Her left hand is placed as if about to turn the page on a new adventure or chapter of her life. On the one hand we emphasise the message of wellbeing on the other the message of inspiration. A dynamic swoosh made of books sits forward of the globe and depicts the fantastic energy and inspiration of her main literary works. 66 Novels and 14 short stories.



The sculpture sets out to be an experience of discovery, full of clues, mystery and intrigue.

Discover the significance of a glove? Why is there a chocolate cake? Why is there a mouse? Is that a CBE or a DBE?

The Mysterious Affair At Styles has a moustache within it, Death on the Nile a Sphynx. Murder of Roger Ackroyd a poison bottle. Throughout the sculpture you are encouraged to think, find and learn.

The experience is designed to be a true destination, it looks out to sea dreaming of adventure with a passion for exploration. It is a catalyst for cultural engagement.

We are at the point of inspiration, a place where together we can capture The Spirit of Agatha Christie.

An augmented trigger within the globe enables you to download the Spirits messages and take them home so you can be inspired.

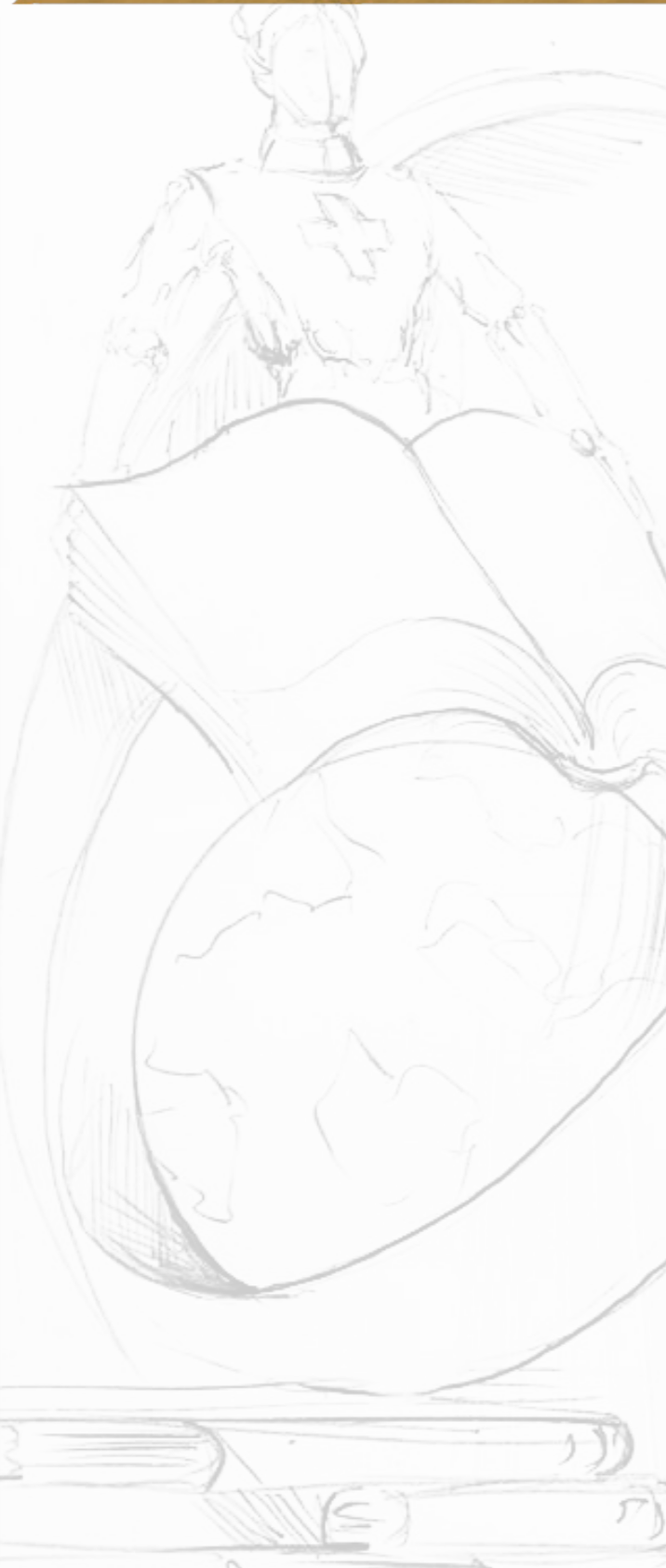
“Very few of us are what we seem.”

“It is a curious thought, but it is only when you see people looking ridiculous that you realize just how much you love them.”

“I like living. I have sometimes been wildly, despairingly, acutely miserable, racked with sorrow; but through it all I still know quite certainly that just to be alive is a grand thing.”

The download will link you to events, arts and engagement programmes to help you get involved and find a pathway to wellbeing, fitness and a brighter more positive future. A living sculpture that ensures Agatha Christie’s legacy continues to inspire for future generations. A place where each year we can celebrate Inspiration Day in Torquay, at the point where it all started.





Biographies:



Our submission headed by Steve Winterburn Artist, Sculptor, in conjunction with Harvey Gardiner FRSA 3-D Designer, Interpretive Specialist.

Who we are and what we do?

Steve began teaching himself to sculpt in 1994. With the progression of his sculpting emerged an ambition to personally shape each piece of his work from concept to completion.

In 2002 Steve moved to Yorkshire, in the north of England, and began converting the vast workshop next to his house. It was here he started to evolve and gain a total understanding of the entire process perfecting traditional closely guarded secrets and techniques handed down over the years between foundry men.

Steve's skills in creating the lost wax impressions from which a one-off ceramic mould is made ready for the bronze pouring are exceptional. His knowledge and expertise expand further with chasing the bronze and his ability to hand work the malleable surface with specialist patination techniques. The net result is that his art captures the passion, spirit and emotion of each piece in absolute detail. Steve regularly creates world class, internationally recognized art with a real meaning and presence. Understanding across the entire process from start to finish.

Involvement with diversity and public engagement initiatives has taken Steve to India, Peru, Kenya, Tanzania, Rwanda, Australia, and Ethiopia working with and alongside indigenous people in the field sculpting human ethnic form and wildlife in situ.

Steve has created a series of notable public bronzes that grace the most significant buildings including sporting legends such as the Rugby League Bronze of five players outside Wembley Stadium.

His works have been exhibited throughout the world including London's BADA, The Royal Academy, Sotheby's, Christies, The Halcyon Gallery, LAPADA, The Austin Gallery Texas, Olympia Fairs and the Louvre.

[Click here for link to Yorkshire Fine Arts Ltd.](#)



Biographies:



Harvey Spencer Gardiner FRSA is an imaginative concept designer that creates original ideas, storylines, interpretation plans, engagement initiatives, immersive exhibitions, sculpture, kinetic and interactive art.

Internationally recognised as one of the leading protagonists in his field the objective is to always create original ideas with the “wow factor” and deliver them into reality across a broad spectrum of visitor experiences.

We imagine Initiative taking sculpture that engages and inspires communities, artwork that brings people together and makes them dream what could be?

We create connective art with real meaning, sculpture that can have influence and emanates the feeling of wellbeing and positivity. Revealing the impossible, discovering the stories and evolving the inspiration with an interpretive message that translates across all boundaries and that lives long into the future.

This is the vision that drives the focus of the projects we produce.

Harvey has written and created concept designs for over 25 different countries' Grade 1 Expo Pavilions, overseeing the production and delivery throughout the entire process. At the height of the Seville Expo Harvey directed over 100 artists which visited his studios from all around the world.

Prior to setting up his own practice he was the special projects director of Silver Knight Exhibitions /Mice Group PLC which he helped grow into the largest exhibition company in Europe . In September 2002 he was elected as a Honorary Fellow of the Royal Society of Arts.

[Click here for link to HSG](#)

