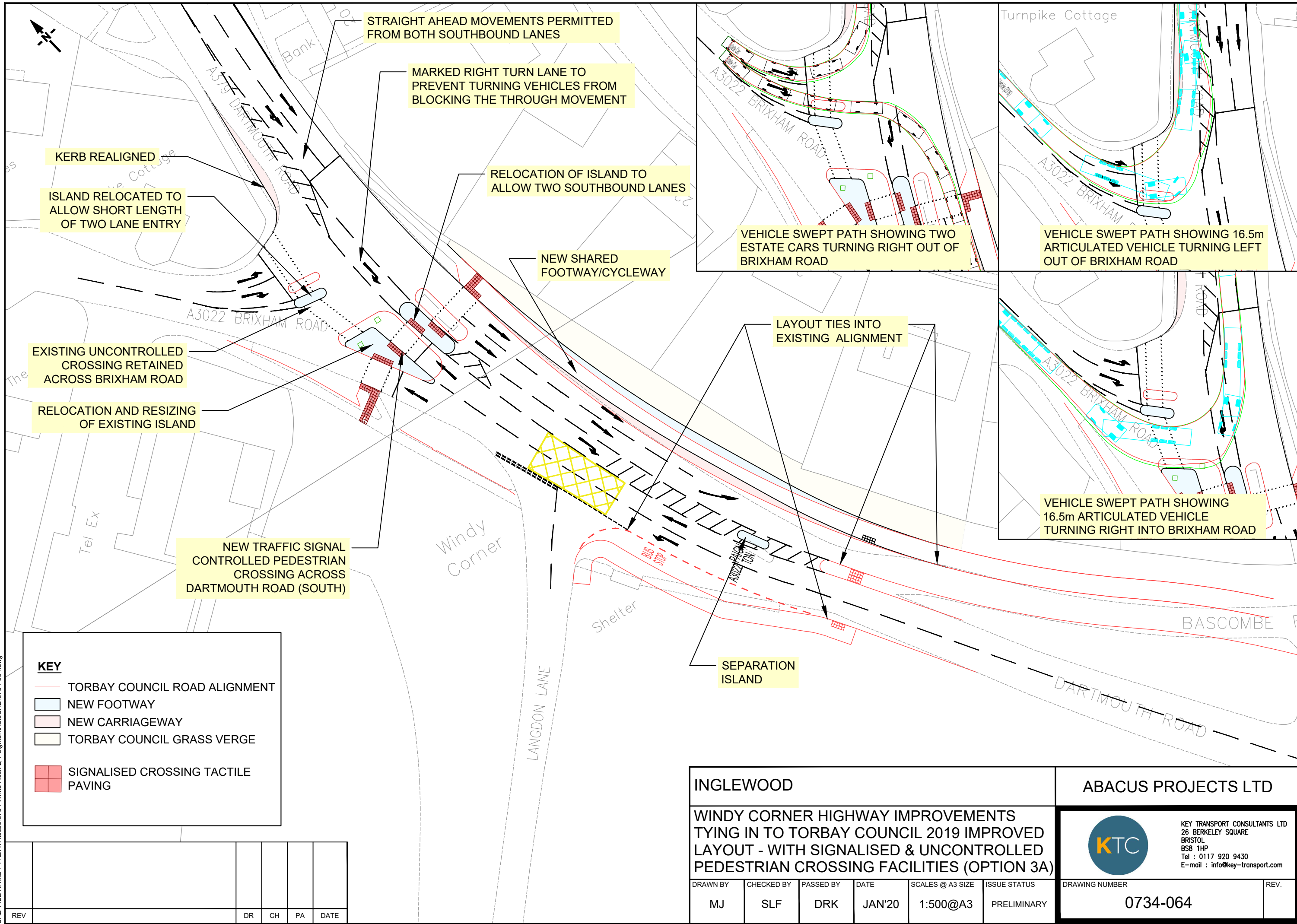


NOTE THE PROPERTY OF THIS DRAWING AND DESIGN IS VESTED IN KEY TRANSPORT CONSULTANTS LIMITED AND MUST NOT BE COPIED OR REPRODUCED IN ANY WAY WITHOUT THEIR WRITTEN CONSENT
CAD FILE NAME : F:\DATA\Jobs\0734 White Rook 2_Paignton\AutoCAD\0734-064.dwg



KEY

- TORBAY COUNCIL ROAD ALIGNMENT
- NEW FOOTWAY
- NEW CARRIAGEWAY
- TORBAY COUNCIL GRASS VERGE
- SIGNALISED CROSSING TACTILE PAVING

REV		DR	CH	PA	DATE

INGLEWOOD				ABACUS PROJECTS LTD			
WINDY CORNER HIGHWAY IMPROVEMENTS TYING IN TO TORBAY COUNCIL 2019 IMPROVED LAYOUT - WITH SIGNALISED & UNCONTROLLED PEDESTRIAN CROSSING FACILITIES (OPTION 3A)							
DRAWN BY	CHECKED BY	PASSED BY	DATE	SCALES @ A3 SIZE	ISSUE STATUS	DRAWING NUMBER	REV.
MJ	SLF	DRK	JAN'20	1:500@A3	PRELIMINARY	0734-064	

KEY TRANSPORT CONSULTANTS LTD
 26 BERKELEY SQUARE
 BRISTOL
 BS8 1HP
 Tel : 0117 920 9430
 E-mail : info@key-transport.com