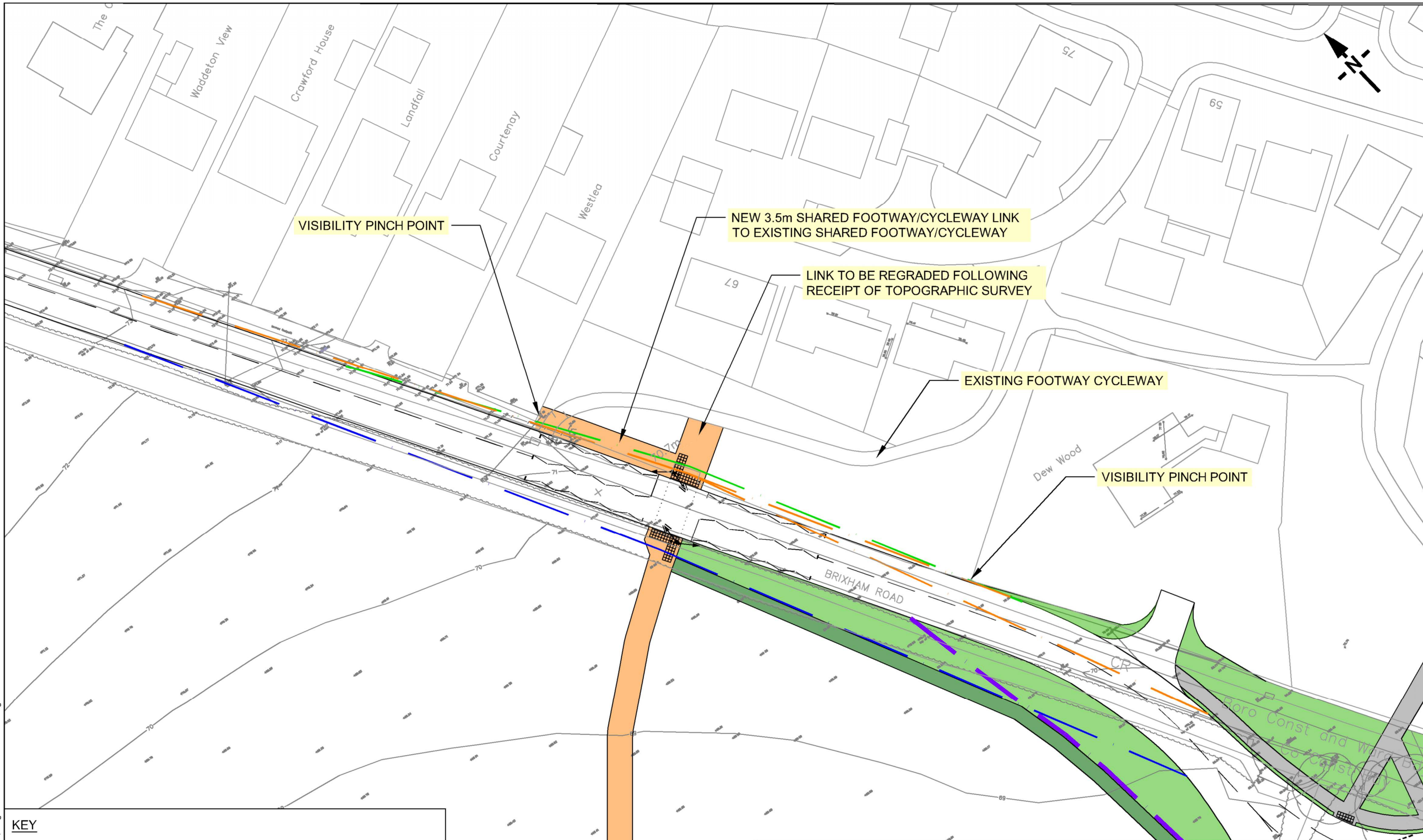


NOTE THE PROPERTY OF THIS DRAWING AND DESIGN IS VESTED IN KEY TRANSPORT CONSULTANTS LIMITED AND MUST NOT BE COPIED OR REPRODUCED IN ANY WAY WITHOUT THEIR WRITTEN CONSENT  
 CAD FILE NAME : F:\DATA\Jobs\0734\_Whit Rock 2\_Paignton\AutoCAD\0734-023RevB.dwg



**KEY**

- 1.5m X 80m PEDESTRIAN VISIBILITY SPLAYS
- 2.5m X 50m PEDESTRIAN AND CYCLIST VISIBILITY SPLAYS
- 2.5m X 80m PEDESTRIAN AND CYCLIST VISIBILITY SPLAYS

A	Introduction of new section of shared footway/ cycleway along edge of carriageway to link to existing.	FF	DRK	DRK	MAR 17
B	Realignment of footway/ cycleway through site and adjustment of bus stop locations to match those shown on drawing 0734-032.	FF	DRK	DRK	JUN 17
REV		DR	CH	PA	DATE

INGLEWOOD, PAIGNTON  
 POTENTIAL NORTHER CROSSING  
 TOUCAN CROSSING

DRAWN BY	CHECKED BY	PASSED BY	DATE	SCALES @ A3 SIZE	ISSUE STATUS
FF	DRK	DRK	JUN 17	1:1,000@A3	PRELIMINARY

**ABACUS PROJECTS LTD**

KEY TRANSPORT CONSULTANTS LTD  
 26 BERKELEY SQUARE  
 BRISTOL  
 BS8 1HP  
 Tel : 0117 920 9430  
 E-mail : info@key-transport.com

DRAWING NUMBER	REV.
0734-023	B