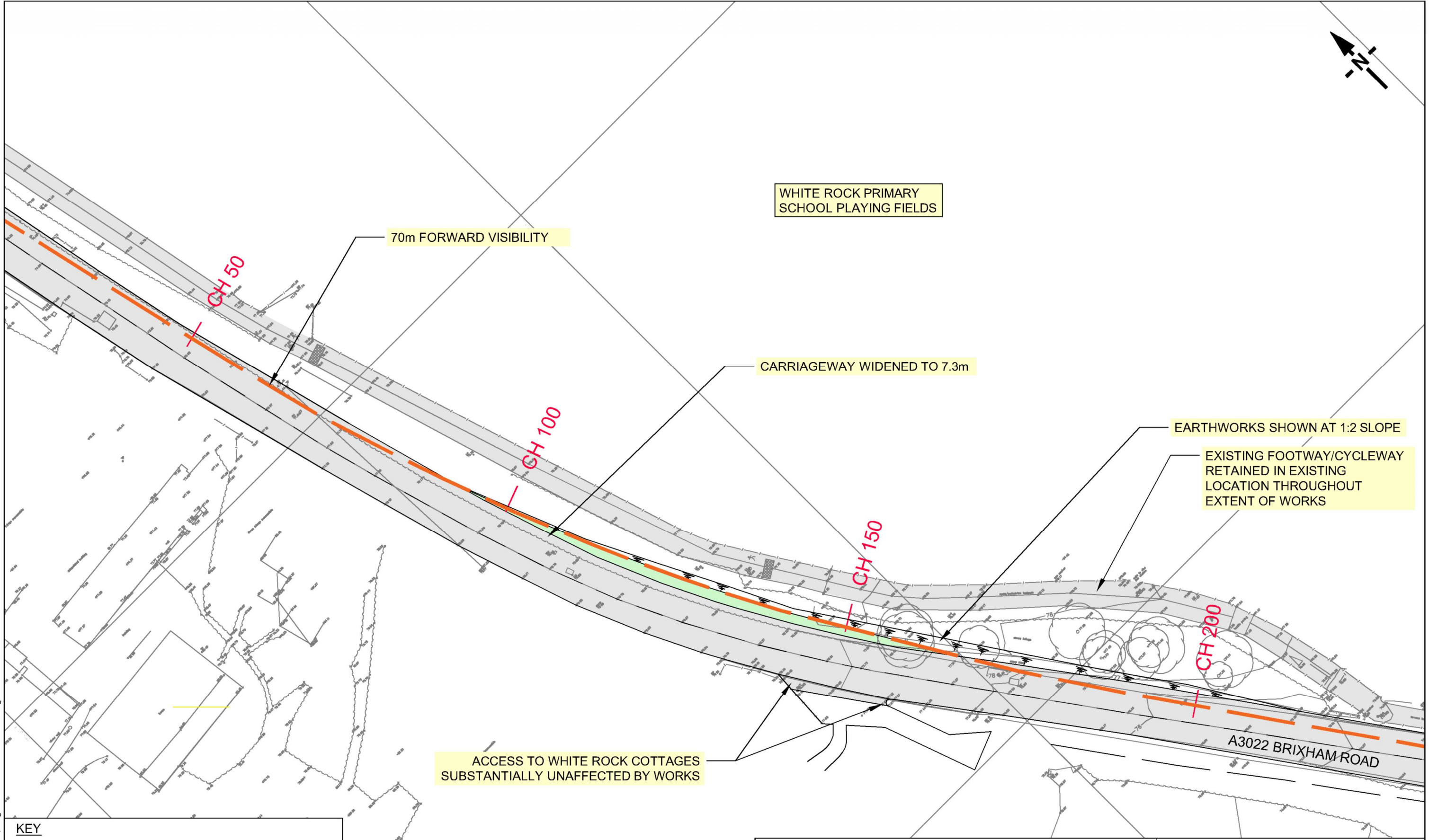



NOTE THE PROPERTY OF THIS DRAWING AND DESIGN IS VESTED IN KEY TRANSPORT CONSULTANTS LIMITED AND MUST NOT BE COPIED OR REPRODUCED IN ANY WAY WITHOUT THEIR WRITTEN CONSENT
 CAD FILE NAME : F:\DATA\Jobs\0734_White Rock 2_Paignton\AutoCAD\0734-018RevA.dwg



KEY						
[Grey Box]		7.3m WIDE CARRIAGEWAY				
[Green Box]		VERGE				
[Orange Dashed Line]		70m FORWARD VISIBILITY ONE STEP BELOW DESIRABLE MINIMUM (30mph/60kph) TO TD9/93				

A	Amendment to site name.	FF	DRK	DRK	JUN 17
REV		DR	CH	PA	DATE

INGLEWOOD, PAIGNTON					
ON-LINE ROAD WIDENING ON A3022 BRIXHAM ROAD TO 7.3m 70m FORWARD VISIBILITY					
DRAWN BY	CHECKED BY	PASSED BY	DATE	SCALES @ A3 SIZE	ISSUE STATUS
FF	DRK	DRK	JAN 17	1:500@A3	PRELIMINARY

ABACUS PROJECTS LTD	
	KEY TRANSPORT CONSULTANTS LTD 26 BERKELEY SQUARE BRISTOL BS8 1HP Tel : 0117 920 9430 E-mail : info@key-transport.com
	DRAWING NUMBER 0734-018
REV.	A