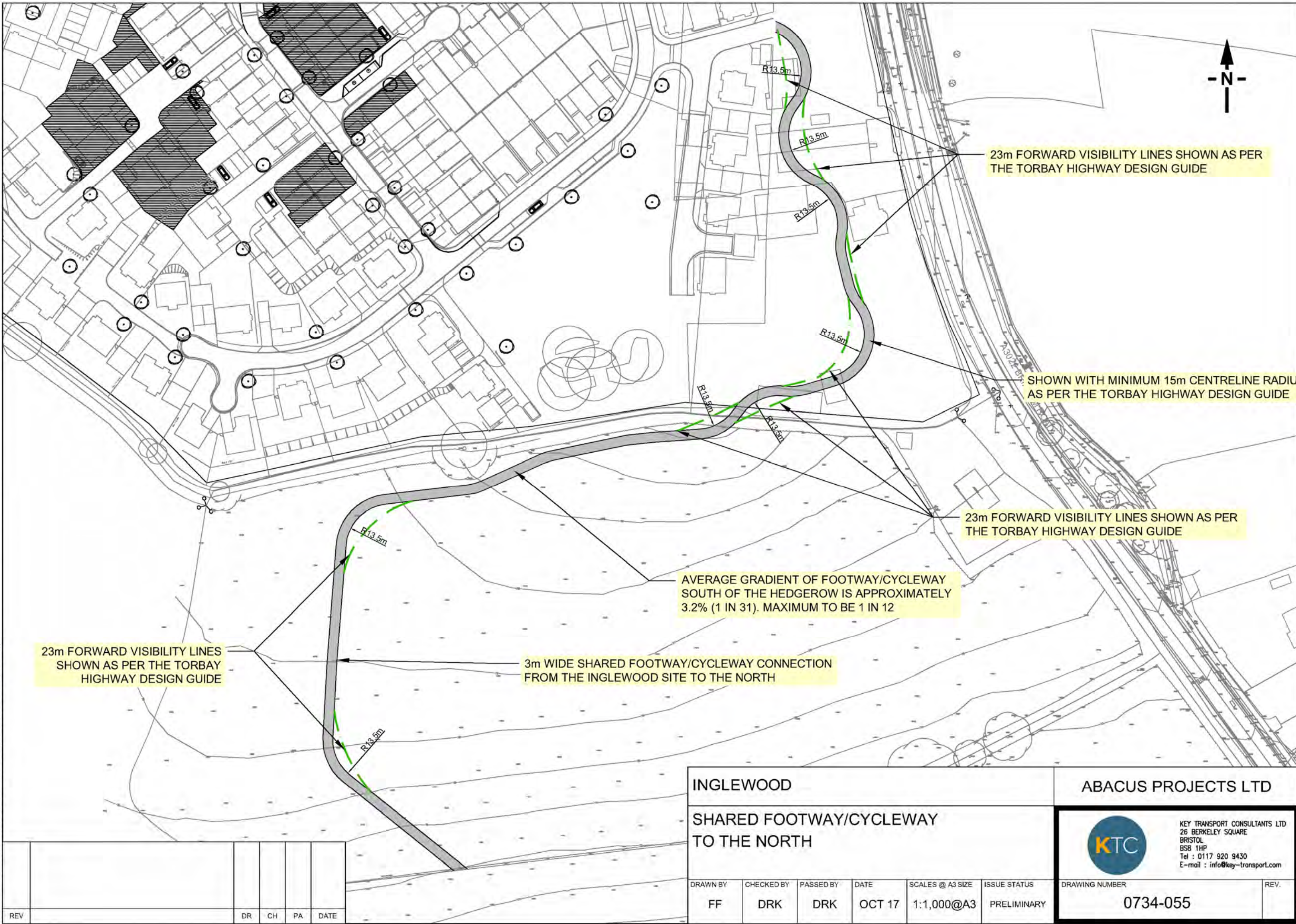


CAD FILE NAME : F:\DATA\Jobs\0734 - White Rock 2, Paignton\AutoCAD\0734-055.056.dwg  
 NOTE THE PROPERTY OF THIS DRAWING AND DESIGN IS VESTED IN KEY TRANSPORT CONSULTANTS LIMITED AND MUST NOT BE COPIED OR REPRODUCED IN ANY WAY WITHOUT THEIR WRITTEN CONSENT



23m FORWARD VISIBILITY LINES SHOWN AS PER THE TORBAY HIGHWAY DESIGN GUIDE

SHOWN WITH MINIMUM 15m CENTRELINE RADIUS AS PER THE TORBAY HIGHWAY DESIGN GUIDE

23m FORWARD VISIBILITY LINES SHOWN AS PER THE TORBAY HIGHWAY DESIGN GUIDE

AVERAGE GRADIENT OF FOOTWAY/CYCLEWAY SOUTH OF THE HEDGEROW IS APPROXIMATELY 3.2% (1 IN 31). MAXIMUM TO BE 1 IN 12

23m FORWARD VISIBILITY LINES SHOWN AS PER THE TORBAY HIGHWAY DESIGN GUIDE

3m WIDE SHARED FOOTWAY/CYCLEWAY CONNECTION FROM THE INGLEWOOD SITE TO THE NORTH

|   |            |           |        |                  |   |                |      |  |  |
|---|------------|-----------|--------|------------------|---|----------------|------|--|--|
| <b>INGLEWOOD</b>                            |            |           |        |                  | <b>ABACUS PROJECTS LTD</b>  |                |      |  |  |
| <b>SHARED FOOTWAY/CYCLEWAY TO THE NORTH</b> |            |           |        |                  | KEY TRANSPORT CONSULTANTS LTD<br>26 BERKELEY SQUARE<br>BRISTOL<br>BS8 1HP<br>Tel : 0117 920 9430<br>E-mail : info@key-transport.com |                |      |  |  |
| DRAWN BY                                    | CHECKED BY | PASSED BY | DATE   | SCALES @ A3 SIZE | ISSUE STATUS  | DRAWING NUMBER | REV. |  |  |
| FF  | DRK        | DRK       | OCT 17 | 1:1,000@A3       | PRELIMINARY   | 0734-055       |      |  |  |

| REV | DR | CH | PA | DATE |
|-----|----|----|----|------|
|     |    |    |    |      |