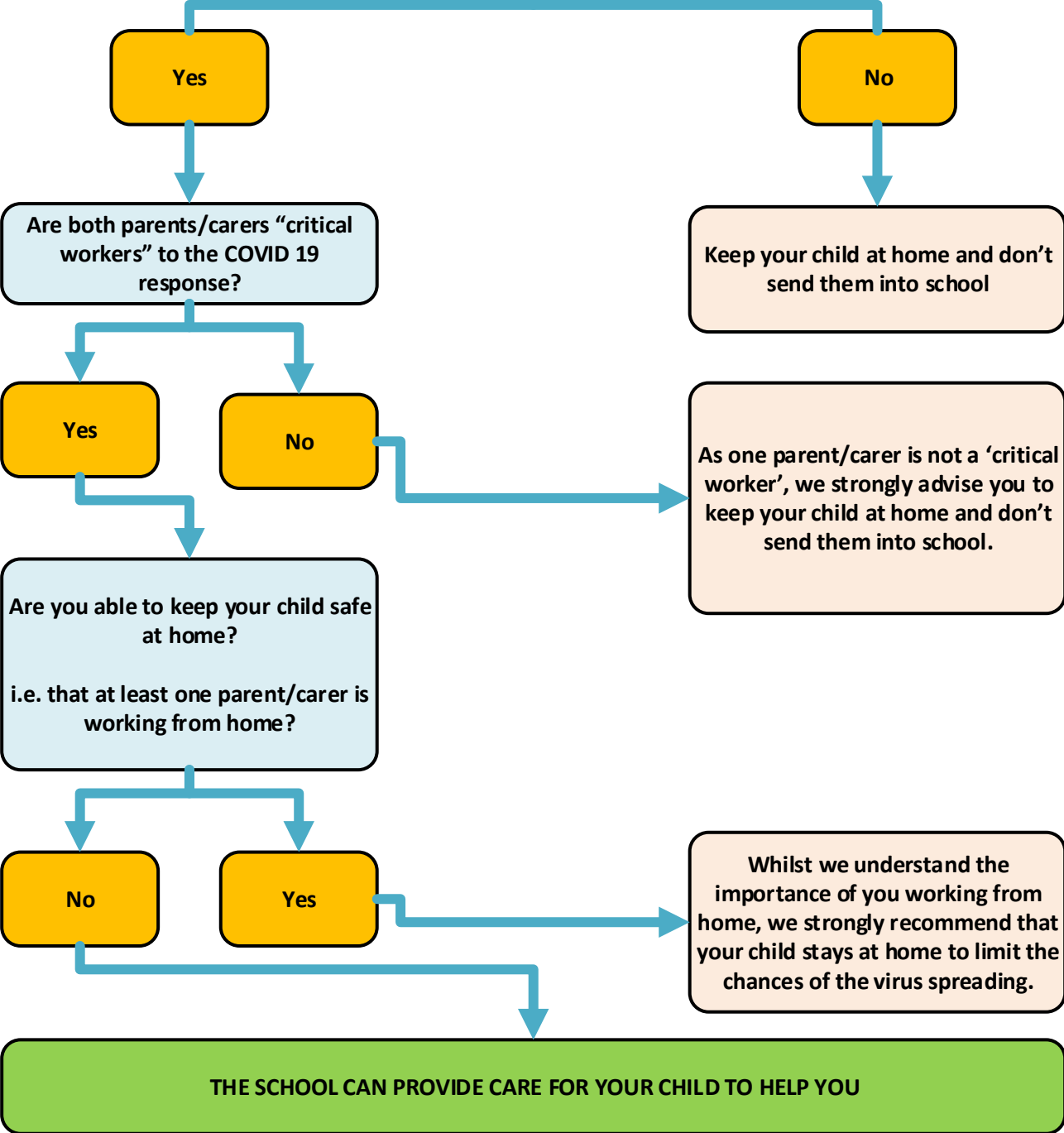


**Am I a "critical worker" to the COVID-19 response?**  
Guidance for schools, childcare providers, colleges and local authorities in England on maintaining educational provision



**Useful Links**

[www.gov.uk/coronavirus](http://www.gov.uk/coronavirus)  
Government Advice

[www.torbay.gov.uk/health-and-wellbeing/public-health/coronavirus/](http://www.torbay.gov.uk/health-and-wellbeing/public-health/coronavirus/)  
Torbay Council information, advice and guidance

<https://www.torbaycdt.org.uk/>  
Community support