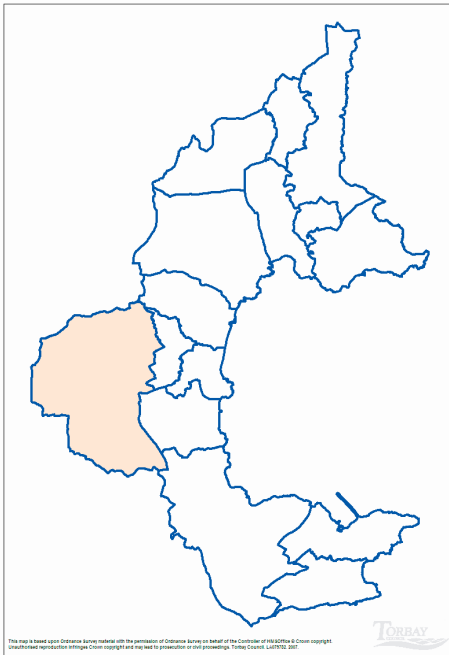


Area overview

The electoral ward of Blatchcombe is located in the town of Paignton, with the ward location shown in the below map.



Quick Key Facts

- From the 2001 Census, the resident population for Blatchcombe was 10,164.
- The ward covers an area of 1,100 hectares.
- With 2.3% of the ward area being Green space.
- Blatchcombe has on average, 9.24 persons per hectare.
- The average age of residents is 37.9 years.
- 97.5% of the resident population in 2001, were White British.
- With 74.4% stating their religion as Christian.

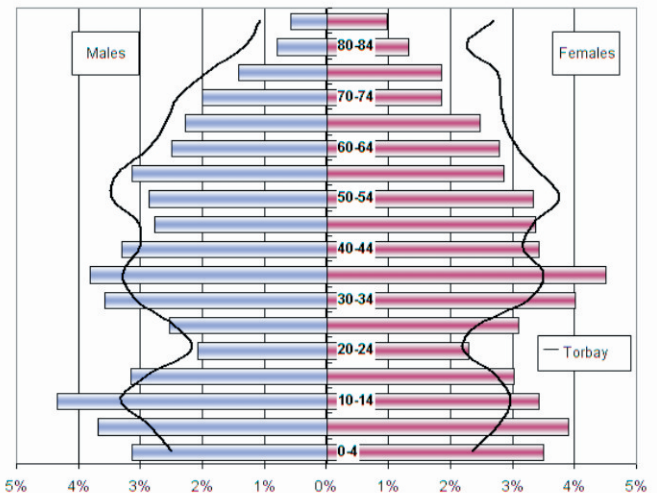
Population

Age group	Count	Proportion of total population	
		Blatchcombe	Torbay
All people	10,164		
0 to 19	2,864	28.2%	22.4%
Working Age	5,908	58.1%	56.3%
50 and Over	3,355	33.0%	44.9%

Source: 2001 Census, ONS

The overall population structure for the ward has a younger person bias compared to the Torbay wide profile.

2001 CENSUS POPULATION PYRAMID FOR
BLATCHCOMBE
COMPARED TO TORBAY



Source: 2001 Census, ONS

Quality of Life

Residents of Blatchcombe have a lower than Torbay wide level of satisfaction with their local area as a place to live.

Satisfaction	Blatchcombe*	Torbay**
Net Satisfaction	66.9%	70.1%
Neither	19.0%	15.4%
Net Dissatisfaction	14.0%	14.5%

Source: 2006 General User Satisfaction Survey

Only a third of residents believe that within their local area, people from different backgrounds get on well together – community cohesion.

Community Cohesion	Blatchcombe*	Torbay**
Agree	34.7%	44.8%
Don't know	33.9%	27.2%
Disagree	16.1%	14.4%
Too few people in local area	9.7%	7.5%
All the same back ground	5.6%	6.2%

* unweighted count of 124 residents

** weighted response for Torbay

Source: 2006 General User Satisfaction Survey

Local Authorities have a statutory obligation to undertake a general user satisfaction survey every three years. These surveys allow Local Authorities to monitor key issues affecting residents. Two questions from the survey specifically asked about quality of life and what makes somewhere a good place to live, and what most needs improving, allowing comparison with previous survey results.

Most important in making somewhere a good place to live

2006	The level of crime (11.1%)
	Clean streets (9.4%)
	Affordable decent housing (8.3%)
	Health services (8.3%)
	Wage levels & local cost of living (6.6%)
2003	Low level of crime (14.9%)
	Clean streets (11.3%)
	Health services (10.2%)
	Affordable decent housing (7.6%)
	Wage levels & local cost of living (6%)

- A low level of crime is considered most important in making somewhere a good place to live for residents of Blatchcombe.

Most needs improving

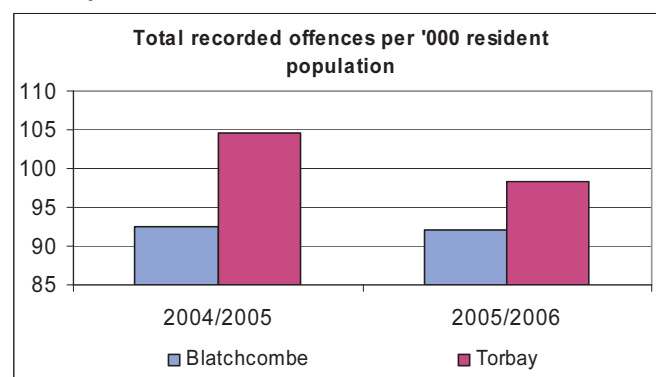
2006	Affordable decent housing (8.9%)
	Activities for teenagers (7.8%)
	Job prospects (7.6%)
	The level of traffic congestion (6.9%)
	The level of crime (6.3%)
2003	Wage levels & local cost of living (12.2%)
	Clean streets (11%)
	Road and pavement repairs (10.8%)
	Low level of traffic congestion (10.8%)
	Affordable decent housing (9.6%)

- Affordable decent housing most needs improving for the residents of Blatchcombe.

Percentages are based on responses to a multiple choice question, and are unweighted.

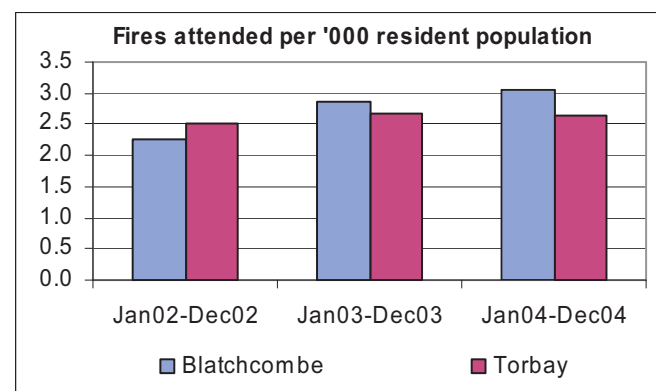
Crime / Fire Rates

Torbay is a safe place to live, and the number of recorded offences per '000 resident population for Blatchcombe is below that of the Torbay figure. The number of recorded offences over the period has dropped by 0.6% in Blatchcombe. The following graph illustrates the rate of recorded offences compared to Torbay.



Source: Amethyst

In 2004 there were 31 primary fires attended by the Devon Fire and Rescue service in Blatchcombe, or just over 3 fires attended per '000 resident population.



Source: ONS

Limiting Long Term Illness (LLTI)

Limiting long-term illness covers any long-term illness; health problem or disability which limits daily activities or work.

LLTI	All people	People with LLTI	Proportion of population with LLTI
Blatchcombe	10,164	2,094	20.60%
Torbay	129,706	29,867	23.0%

Source: 2001 Census, ONS

Life Expectancy

Life expectancy at birth for person in Blatchcombe ward is 79.8 years, compared to the Torbay average of 79.2 years (ward average).

Source: SWPHO

Living Arrangements - Households

Almost two thirds of households are occupied by married or cohabiting couples, there is a slightly higher than bay wide proportion of divorced households.

Living arrangements	Blatchcombe	Torbay
Married or Cohabiting	62.7%	60.6%
Not living in a couple	18.8%	19.8%
Divorced / Separated	10.5%	9.9%
Widowed	7.9%	9.7%

Source: 2001 Census, ONS

Housing Tenure

Over two thirds of households are owner occupied – either outright, mortgaged or shared ownership, with one in five occupied households being housing association.

Tenure	Blatchcombe	Torbay
All Occupied households	4,228	57,420
Owner Occupied	70.4%	74.0%
Housing Association	20.7%	8.2%
Private Rent	6.4%	15.1%
Other	2.5%	2.7%

Source: 2001 Census, ONS

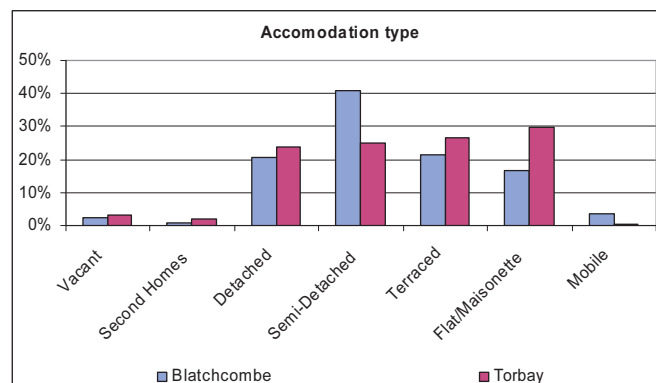
Lone Parents

Lone parents	Proportion of household spaces: lone parent with dependent children
Blatchcombe	9.5%
Torbay	6.6%

Source: 2001 Census, ONS

Household Spaces

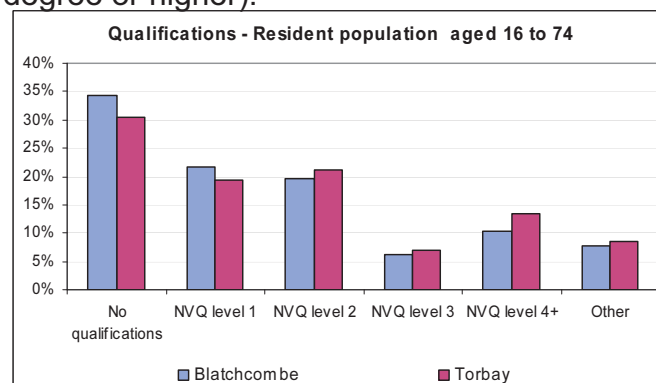
Over 40% of properties in the ward are semi detached, noticeably higher than the bay proportion.



Source: 2001 Census, ONS

Qualifications

Overall, residents in Blatchcombe have a lower level of qualification than the Torbay wide figure. 10.3% having NVQ level 4+ (HND, degree or higher).



Source: 2001 Census, ONS

Economically Active

Economically Active	Blatchcombe	Torbay
All people aged 16 to 74	7,066	90,852
Economically active	4,556	63.3%
In employment	4,091	57.0%
Employees	3,550	46.3%
Self employed	541	7.7%
Unemployed	323	4.1%

Source: 2001 Census, ONS

Blatchcombe has a slightly higher proportion of people aged 16 to 74 economically active, than compared to the bay.

Occupation group

Occupation groups	Blatchcombe	Torbay
All people aged 16 - 74 in employment*	4,217	53,543
Managers and senior officials	11.8%	15.2%
Professional occupations	6.1%	7.3%
Associate professional and technical occupations	12.1%	12.5%
Administrative and secretarial occupations	10.7%	11.0%
Skilled trades occupations	14.4%	13.8%
Personal service occupations	7.9%	8.8%
Sales and customer service occupations	9.7%	9.0%
Process; plant and machine operatives	12.4%	9.4%
Elementary occupations	14.9%	13.0%

Source: 2001 Census, ONS

*cells in original table have been randomly adjusted to avoid the release of confidential data.

Industry of Employment

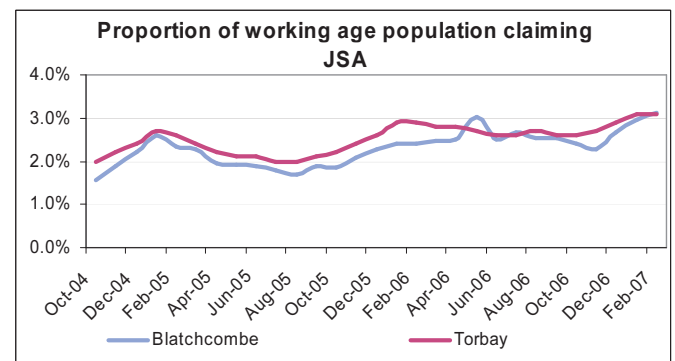
Industry of employment	Blatchcombe	Torbay
All people aged 16 - 74 in employment	4,217	53,542
Agriculture; hunting; forestry	1.3%	0.9%
Fishing	0.3%	0.3%
Mining & quarrying	0.1%	0.2%
Manufacturing	20.3%	14.7%
Electricity; gas and water supply	0.5%	0.6%
Construction	7.4%	7.9%
Wholesale & retail trade; repair of motor vehicles	21.1%	18.5%
Hotels and catering	7.5%	10.3%
Transport storage and communication	6.1%	5.6%
Financial intermediation	1.7%	2.1%
Real estate; renting and business activities	7.5%	8.6%
Public administration and defence	4.0%	4.5%
Education	5.8%	6.3%
Health and social work	11.5%	14.0%
Other	5.1%	5.6%

Source: 2001 Census, ONS

Benefit Claimants

The rate of Job Seekers Allowance (JSA) claimants in Blatchcombe is currently similar to

the Torbay figure.



source: Nomis

Overall claimant levels in Blatchcombe are generally higher than the bay wide figures. Claimant levels as at August 2006.

Benefit Group	Blatchcombe	Torbay
Income Support Claimants	10.0%	8.3%
Incapacity Benefit / Severe Disablement Allowance	10.7%	10.1%
Disability Living Allowance	7.9%	6.2%

Source: DWP

Income

Model-Based Estimates of Income for Wards, 2001/02	£
England & Wales (Ward Average)	550
South West (Ward Average)	500
Torbay (Ward Average)	410
Blatchcombe	410

Source: ONS

The model based income for Blatchcombe shows that the average total weekly household income in 2001/02 was the same as the Torbay average at £410 per week.

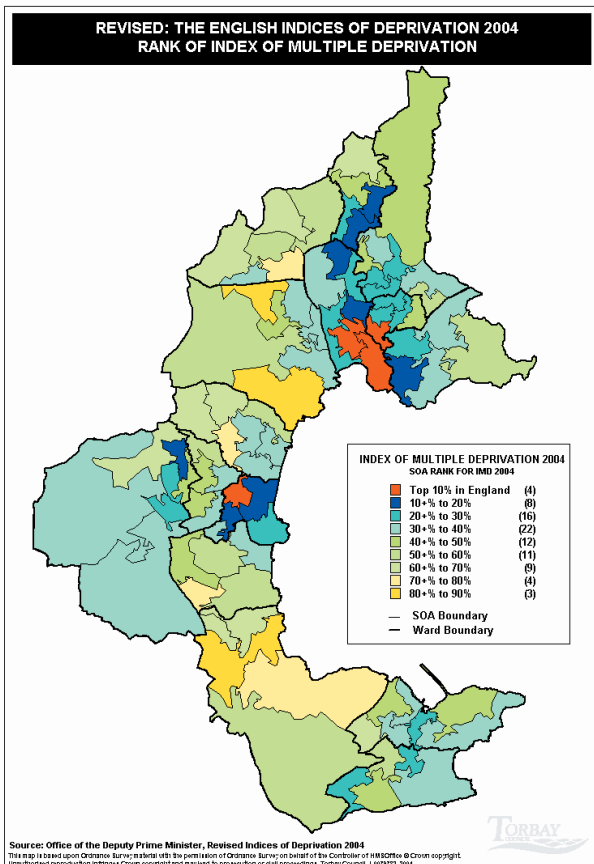
Social Exclusion

Social exclusion happens when people or places suffer from a series of problems such as unemployment, discrimination, poor skills, low incomes, poor housing, high crime, ill health and family breakdown. When such problems combine they can create a vicious cycle. Social exclusion can happen as a result of problems that face one person in their life. But it can also start from birth, being born into poverty or to

parents with low skills still has a major influence on future life chances. The English Indices of Deprivation 2004 (revised) go some way to identifying hotspots of deprivation. The overall 'Index of Multiple Deprivation' is a model based on 7 domains covering the aforementioned social exclusion topics.

What was the Office of the Deputy Prime Minister, now the Department for Communities and Local Government published in 2004 a set of deprivation indices that were modelled on comparative social and economic datasets. The index of multiple deprivation is used widely to compare varying areas with associated levels of deprivation / social exclusion. Within the index, Torbay has areas of severe deprivation within the top 10% most deprived in England. The below map illustrates the areas (in red) in the top 10% most deprived in England.

Index of Multiple Deprivation



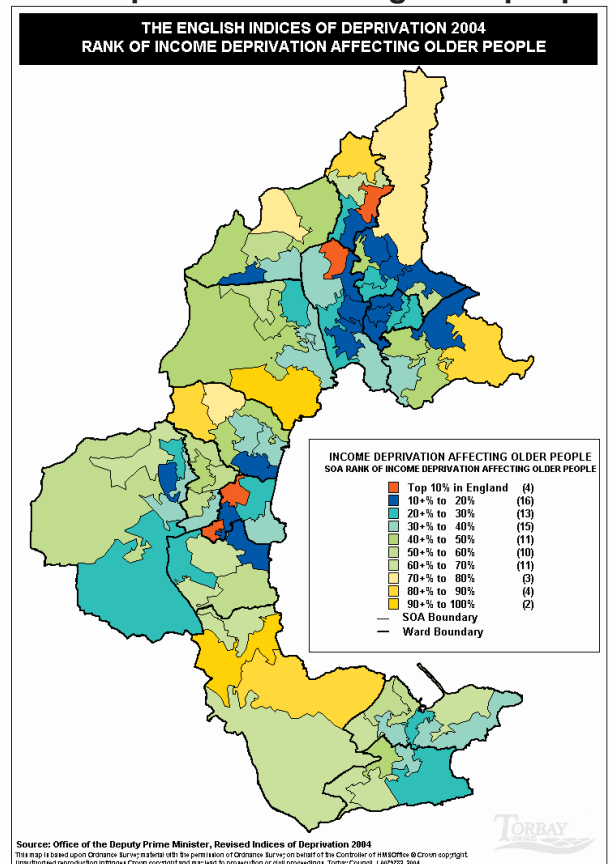
From the 2004 Indices of multiple deprivation there are a series of sub-domains that when aggregated together give the actual 7 domains that in turn lead to the Index of Multiple Deprivation.

The following maps illustrate the ranking within England for areas in Torbay for the following indicators:

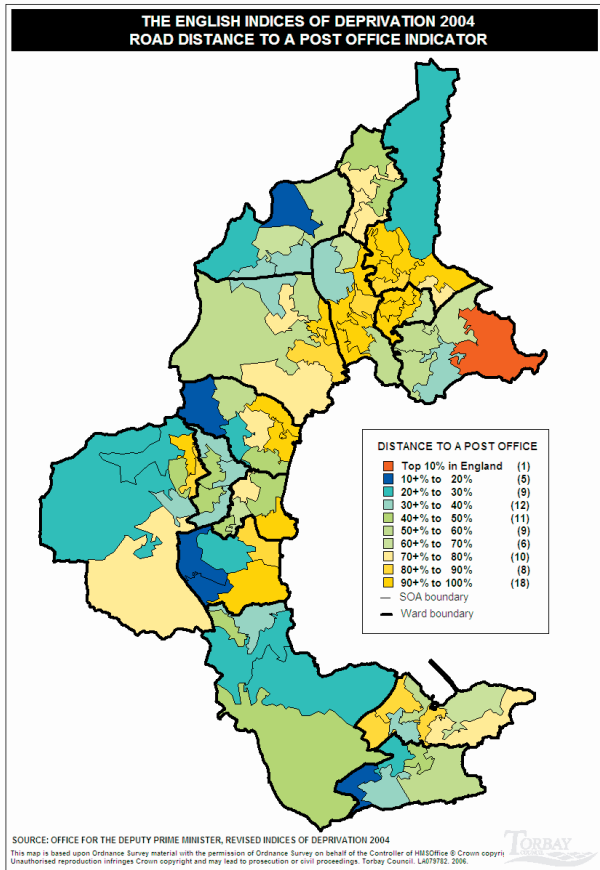
- Income deprivation affecting older people.
- Road distance to a Post Office.
- Road distance to a super market or convenience store.
- Road distance to a GP premises.
- Road distance to a primary school.

Further information of the English Indices of Deprivation 2004 can be obtained using the contact details at the end of this paper.

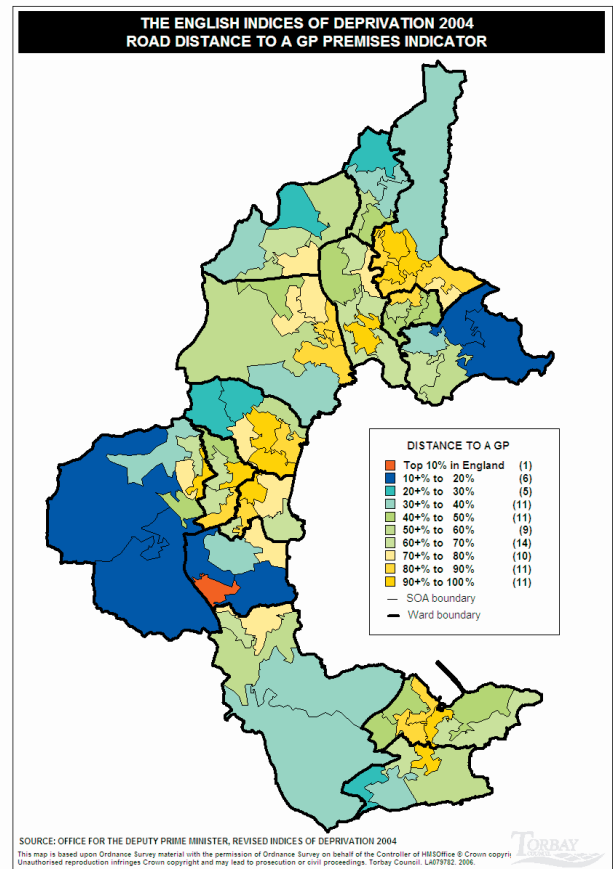
Income deprivation affecting older people



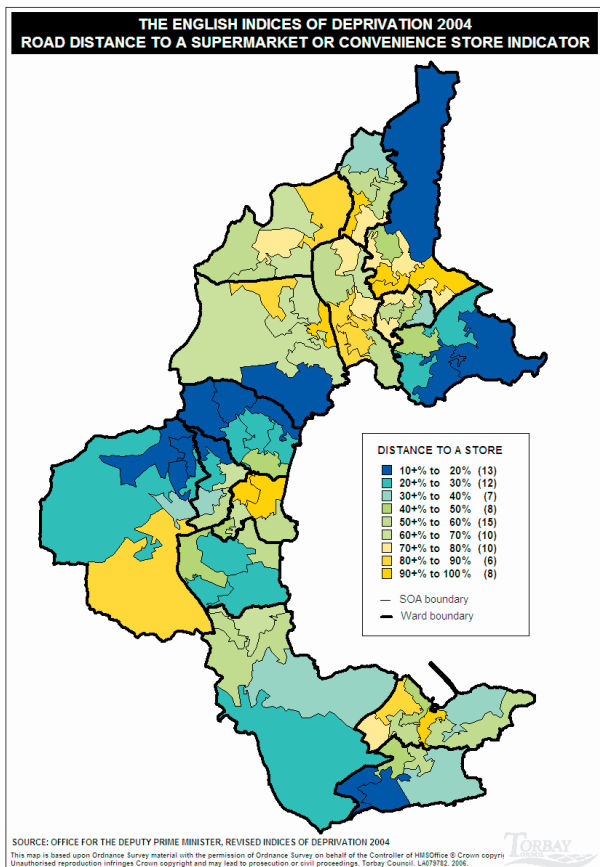
Road distance to a Post Office



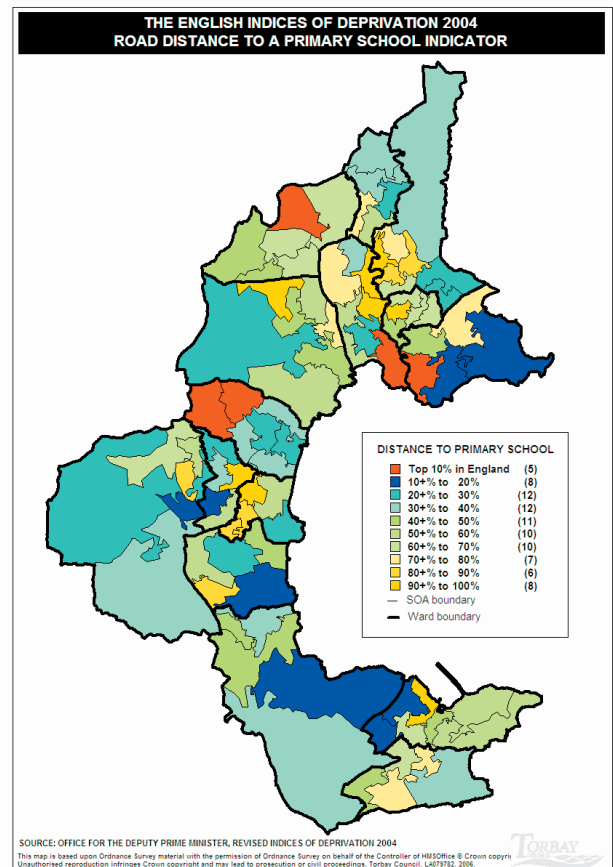
Road distance to a GP premises



Road distance to a super market or convenience store



Road distance to a primary school

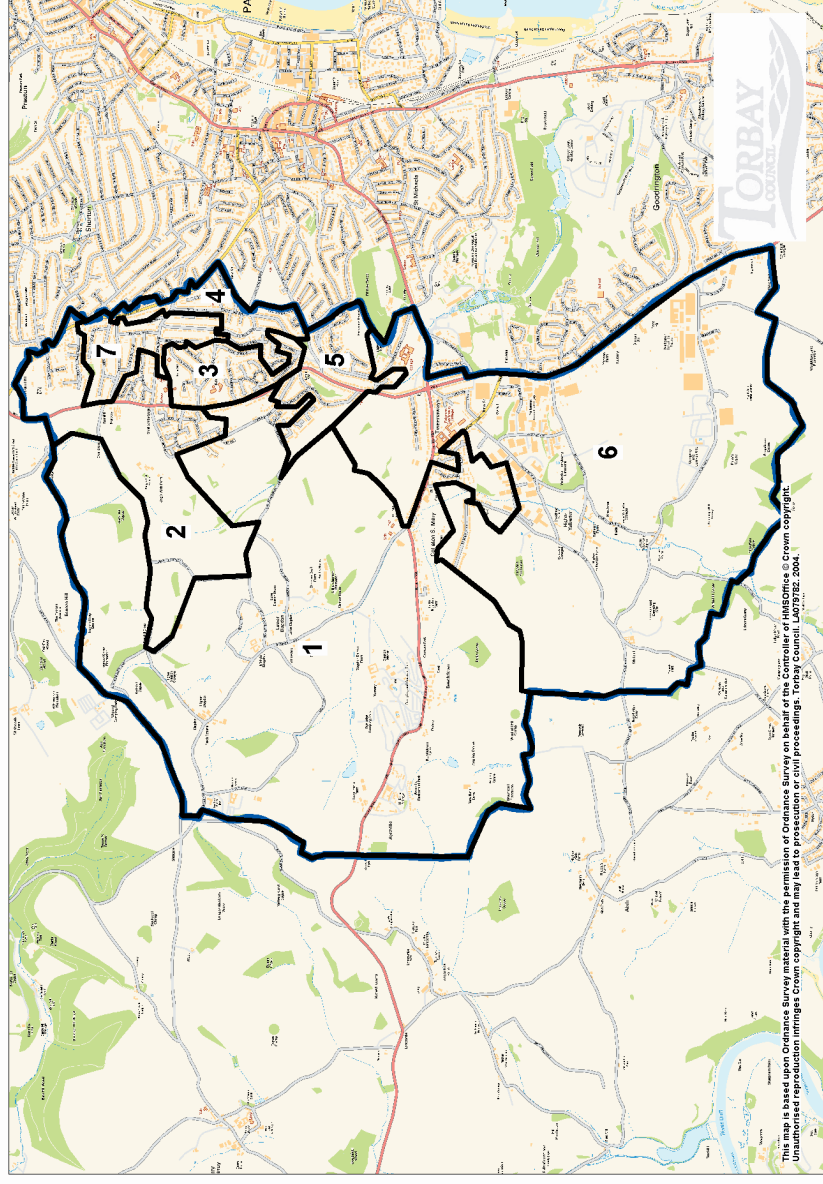


BLATCHCOMBE WARD

Below the electoral geography of a ward, there exists further statistical geography. The most recognised and well used geographies are Super Output Areas (SOAs). SOAs are based in data from the 2001 census and have, on average, 650 households within. The SOA boundaries do NOT reflect neighbourhoods, they are purely for statistical comparison, and are used as a mechanism for publishing data to a relatively small area.

The map to the right shows the SOA structure for Blatchcombe, whilst the below table details the national ranking for the specific SOA in the Index of Multiple Deprivation and the 7 associated domains plus two further sub-domains.

The English Indices of Deprivation 2004 (revised)



Area number for ward map	Index of Multiple Deprivation	Income Domain	Employment Domain	Health and Disability domain	Education, Skills and Training Domain	Barriers to Housing Domain	Crime and Disorder Domain	Living Environment Domain	Income deprivation affecting children	Income deprivation affecting older people
	RANK	RANK	RANK	RANK	RANK	RANK	RANK	RANK	RANK	RANK
1	10,595	12,891	8,304	13,284	13,356	2,817	25,992	9,291	15,353	18,988
2	19,850	16,771	18,450	20,352	11,781	12,203	25,073	31,548	14,731	21,266
3	9,623	7,625	9,124	11,813	4,855	19,509	20,937	10,324	9,432	4,542
4	13,221	13,031	10,178	15,007	9,234	21,681	17,361	12,396	16,388	11,194
5	8,720	6,420	6,149	11,975	6,244	10,153	22,548	19,778	4,978	12,213
6	12,897	10,895	10,889	14,925	10,889	16,071	31,140	7,743	15,540	7,899
7	4,078	2,794	5,283	8,851	1,888	15,611	15,192	2,222	2,886	9,659

Source: Office of the Deputy Prime Minister, The English Indices of Deprivation 2004 (revised)

Areas shaded in grey are SOAs ranked within the top 10% most deprived in England

For further information please contact
The Consultation and Research Team
Torbay Council

Tel: (01803) 20 8829 / 8827

E-mail: statistics@torbay.gov.uk

DLH/03/07