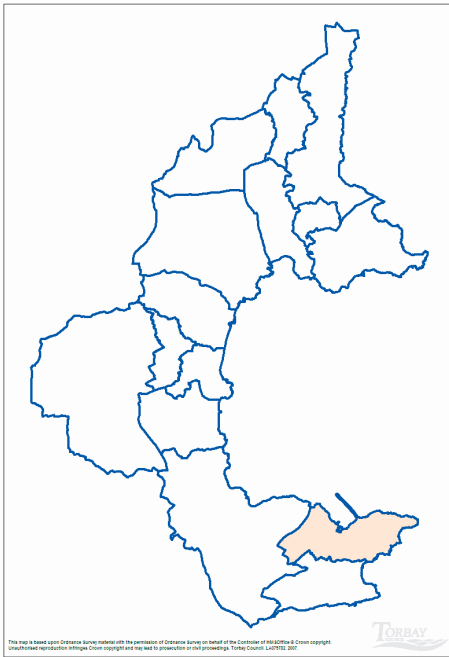


Area overview

The electoral ward of Berry Head with Furzeham is located in the town of Brixham, with the ward location shown in the below map.



Quick Key Facts

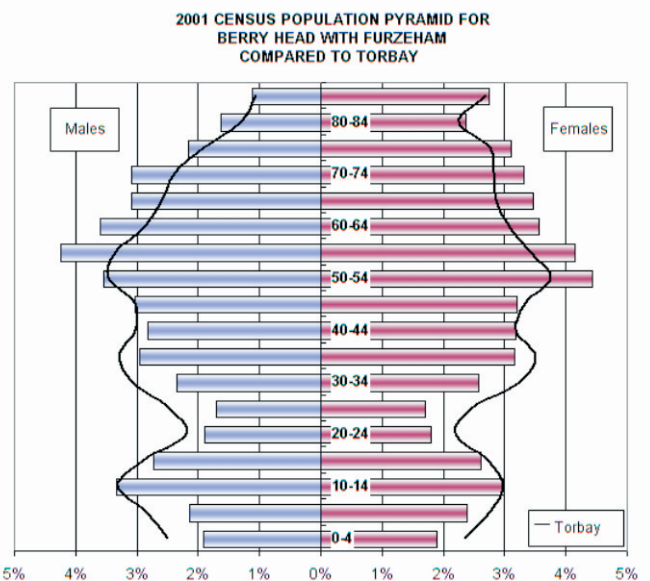
- From the 2001 Census, the resident population for Berry Head with Furzeham was 10,157.
- The ward covers an area of 338 hectares.
- With 17.2% of the ward area being Green space.
- Berry Head with Furzeham has on average, 30.05 persons per hectare.
- The average age of residents is 46.2 years.
- 97.3% of the resident population in 2001, were White British.
- With 77.3% stating their religion as Christian.

Population

Age group	Count	Proportion of total population	
		Berry Head with Furzeham	Torbay
All people	10,157		
0 to 19	2,037	20.1%	22.4%
Working Age	5,538	54.5%	56.3%
50 and Over	5,042	49.6%	44.9%

Source: 2001 Census, ONS

The overall population structure for the ward has an older person bias compared to the Torbay wide profile.



Source: 2001 Census, ONS

Quality of Life

Residents of Berry Head with Furzeham have a higher than Torbay wide level of satisfaction with their local area as a place to live.

Satisfaction	Berry Head with Furzeham*	Torbay**
Net Satisfaction	82.9%	70.1%
Neither	8.5%	15.4%
Net Dissatisfaction	8.5%	14.5%

Source: 2006 General User Satisfaction Survey

Over 40% of residents believe that within their local area, people from different backgrounds get on well together – community cohesion.

Community Cohesion	Berry Head with Furzeham*	Torbay**
Agree	41.9%	44.8%
Don't know	27.4%	27.2%
Disagree	12.0%	14.4%
Too few people in local area	8.5%	7.5%
All the same back ground	10.3%	6.2%

* unweighted count of 117 residents

** weighted response for Torbay

Source: 2006 General User Satisfaction Survey

Local Authorities have a statutory obligation to undertake a general user satisfaction survey every three years. These surveys allow Local Authorities to monitor key issues affecting residents. Two questions from the survey specifically asked about quality of life and what makes somewhere a good place to live, and what most needs improving, allowing comparison with previous survey results.

Most important in making somewhere a good place to live

2006	Health services (11.0%)
	Clean streets (9.0%)
	Affordable decent housing (8.6%)
	The level of crime (8.6%)
	Wage levels & local cost of living (7.7%)
2003	Low level of crime (16.2%)
	Clean streets (10.9%)
	Wage levels & local cost of living (8.3%)
	Health services (7.4%)
	Affordable decent housing (7.4%)

- There has been a noticeable change in the top indicator for what is considered most important in making somewhere a good place to live.

Most needs improving

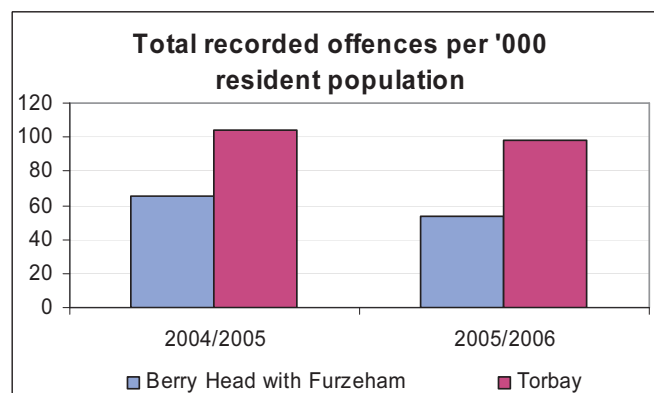
2006	Affordable decent housing (11.3%)
	Activities for teenagers (9.5%)
	Job prospects (6.7%)
	The level of pollution (6.5%)
	Sports & leisure facilities (6.5%)
2003	Wage levels & local cost of living (10.6%)
	Low level of crime (10.6%)
	Job prospects (9.5%)
	Clean streets (8.8%)
	Road and pavement repairs (8.1%)

- Affordable decent housing most needs improving for the residents of Berry Head with Furzeham.

Percentages are based on responses to a multiple choice question, and are unweighted.

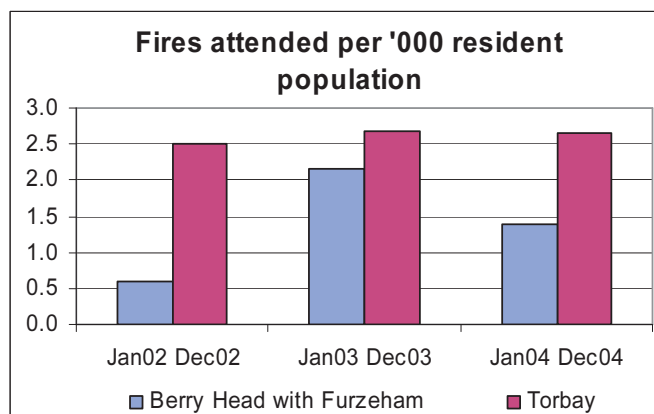
Crime / Fire Rates

Torbay is a safe place to live, and the number of recorded offences per '000 resident population for Berry Head with Furzeham is below that of the Torbay figure. The number of recorded offences over the period has decreased by 17.3% in Berry Head with Furzeham. The following graph illustrates the rate of recorded offences compared to Torbay.



Source: Amethyst

In 2004 there were 14 primary fires attended by the Devon Fire and Rescue service in Berry Head with Furzeham, or just over 1 fire attended per '000 resident population.



Source: ONS

Limiting Long Term Illness (LLTI)

Limiting long-term illness covers any long-term illness; health problem or disability which limits daily activities or work.

LLTI	All people	People with LLTI	Proportion of population with LLTI
Berry Head with Furzeham	10,157	2,536	24.97%
Torbay	129,706	29,867	23.0%

Source: 2001 Census, ONS

Life Expectancy

Life expectancy at birth for persons in Berry Head with Furzeham ward is 79.8 years, compared to the Torbay average of 79.2 years (ward average).

Source: SWPHO

Living Arrangements - Households

Almost two thirds of households are occupied by married or cohabiting couples, there is also a slightly higher than bay wide proportion of widowed households.

Living arrangements	Berry Head with Furzeham	Torbay
Married or Cohabiting	62.4%	60.6%
Not living in a couple	17.2%	19.8%
Divorced / Separated	9.7%	9.9%
Widowed	10.7%	9.7%

Source: 2001 Census, ONS

Housing Tenure

Over 75% of households are owner occupied – either outright, mortgaged or shared ownership.

Tenure	Berry Head with Furzeham	Torbay
All Occupied households	4,748	57,420
Owner Occupied	75.1%	74.0%
Housing Association	5.8%	8.2%
Private Rent	16.2%	15.1%
Other	2.9%	2.7%

Source: 2001 Census, ONS

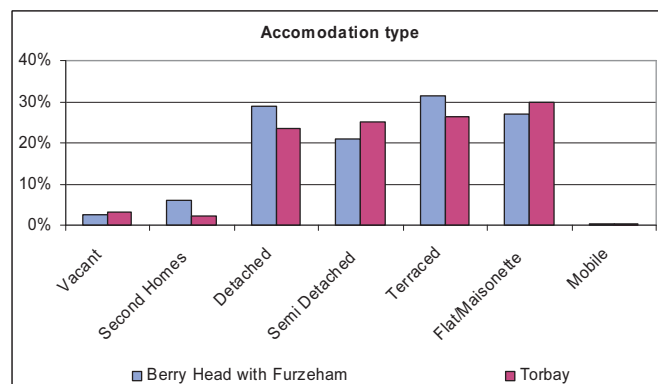
Lone Parents

Lone parents	Proportion of household spaces: lone parent with dependent children
Berry Head with Furzeham	5.2%
Torbay	6.6%

Source: 2001 Census, ONS

Household Spaces

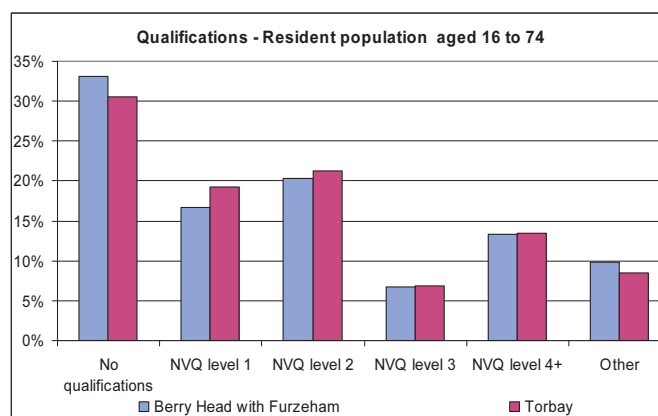
There is a higher than bay wide proportion of both detached and terraced properties in the ward.



Source: 2001 Census, ONS

Qualifications

Overall, residents in Berry Head with Furzeham have a lower level of qualification to the Torbay wide figure. 13.3% having NVQ level 4+ (HND, degree or higher).



Source: 2001 Census, ONS

Economically Active

Economically Active	Berry Head with Furzeham	Torbay
All people aged 16 to 74	7,215	90,852
Economically active	4,237	63.3%
In employment	3,785	57.0%
Employees	2,958	46.3%
Self employed	827	10.8%
Unemployed	309	4.1%

Source: 2001 Census, ONS

Berry Head with Furzeham has a lower proportion of people aged 16 to 74 economically active, when compared to the bay.

Occupation group

Occupation groups	Berry Head with Furzeham	Torbay
All people aged 16 - 74 in employment*	3,917	53,543
Managers and senior officials	15.2%	15.2%
Professional occupations	7.3%	7.3%
Associate professional and technical occupations	13.1%	12.5%
Administrative and secretarial occupations	10.0%	11.0%
Skilled trades occupations	14.9%	13.8%
Personal service occupations	8.9%	8.8%
Sales and customer service occupations	8.2%	9.0%
Process; plant and machine operatives	9.7%	9.4%
Elementary occupations	12.7%	13.0%

Source: 2001 Census, ONS

*cells in original table have been randomly adjusted to avoid the release of confidential data.

Industry of Employment

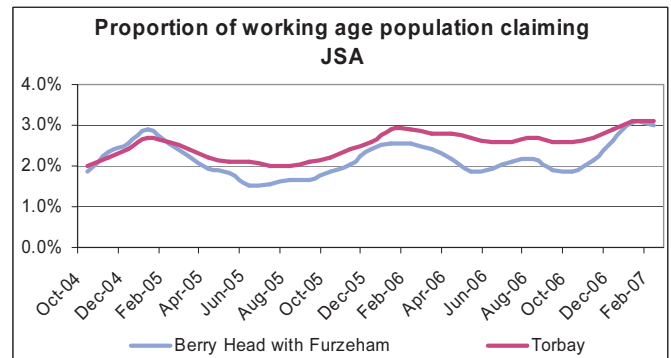
Industry of employment	Berry Head with Furzeham	Torbay
All people aged 16 - 74 in employment	3,917	53,542
Agriculture; hunting; forestry	1.0%	0.9%
Fishing	1.9%	0.3%
Mining & quarrying	0.1%	0.2%
Manufacturing	14.9%	14.7%
Electricity; gas and water supply	0.4%	0.6%
Construction	6.8%	7.9%
Wholesale & retail trade; repair of motor vehicles	18.2%	18.5%
Hotels and catering	10.1%	10.3%
Transport storage and communication	6.6%	5.6%
Financial intermediation	1.9%	2.1%
Real estate; renting and business activities	8.4%	8.6%
Public administration and defence	4.4%	4.5%
Education	6.3%	6.3%
Health and social work	13.2%	14.0%
Other	5.7%	5.6%

Source: 2001 Census, ONS

Benefit Claimants

The rate of Job Seekers Allowance (JSA)

claimants in Berry Head with Furzeham is currently similar to the Torbay figure.



Source: NOMIS

Overall, claimant levels in Berry Head with Furzeham are generally lower than the bay wide figures. Claimant levels as at Aug 2006.

Benefit Group	Berry Head with Furzeham	Torbay
Income Support Claimants	5.4%	8.3%
Incapacity Benefit / Severe Disablement Allowance	9.1%	10.1%
Disability Living Allowance	6.0%	6.2%

Source: DWP

Income

Model-Based Estimates of Income for Wards, 2001/02	£
England & Wales (Ward Average)	550
South West (Ward Average)	500
Torbay (Ward Average)	410
Berry Head with Furzeham	390

Source: ONS

The model based income for Berry Head with Furzeham shows that the average total weekly household income in 2001/02 was lower than the Torbay average at £390 per week.

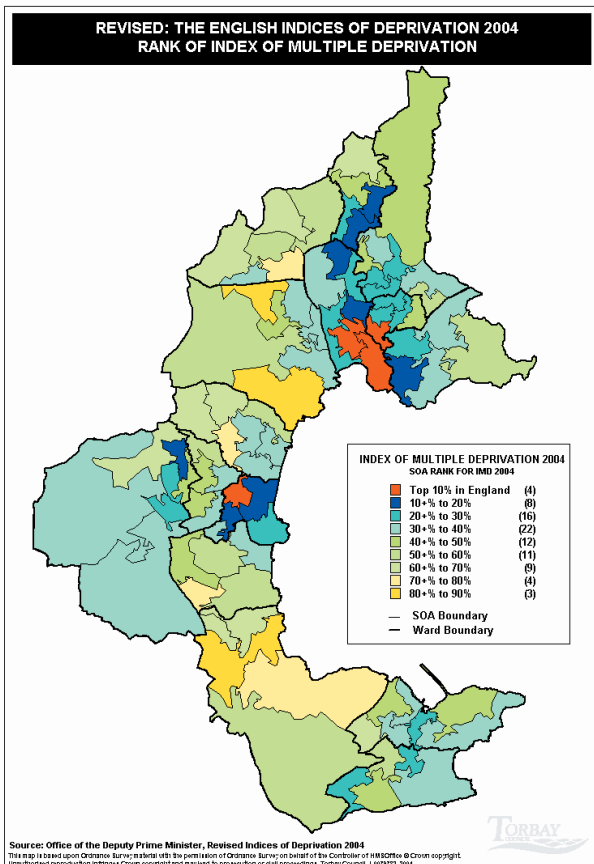
Social Exclusion

Social exclusion happens when people or places suffer from a series of problems such as unemployment, discrimination, poor skills, low incomes, poor housing, high crime, ill health and family breakdown. When such problems combine they can create a vicious cycle. Social exclusion can happen as a result of problems that face one person in their life. But it can also start from birth, being born into poverty or to

parents with low skills still has a major influence on future life chances. The English Indices of Deprivation 2004 (revised) go some way to identifying hotspots of deprivation. The overall 'Index of Multiple Deprivation' is a model based on 7 domains covering the aforementioned social exclusion topics.

What was the Office of the Deputy Prime Minister, now the Department for Communities and Local Government published in 2004 a set of deprivation indices that were modelled on comparative social and economic datasets. The index of multiple deprivation is used widely to compare varying areas with associated levels of deprivation / social exclusion. Within the index, Torbay has areas of severe deprivation within the top 10% most deprived in England. The below map illustrates the areas (in red) in the top 10% most deprived in England.

Index of Multiple Deprivation



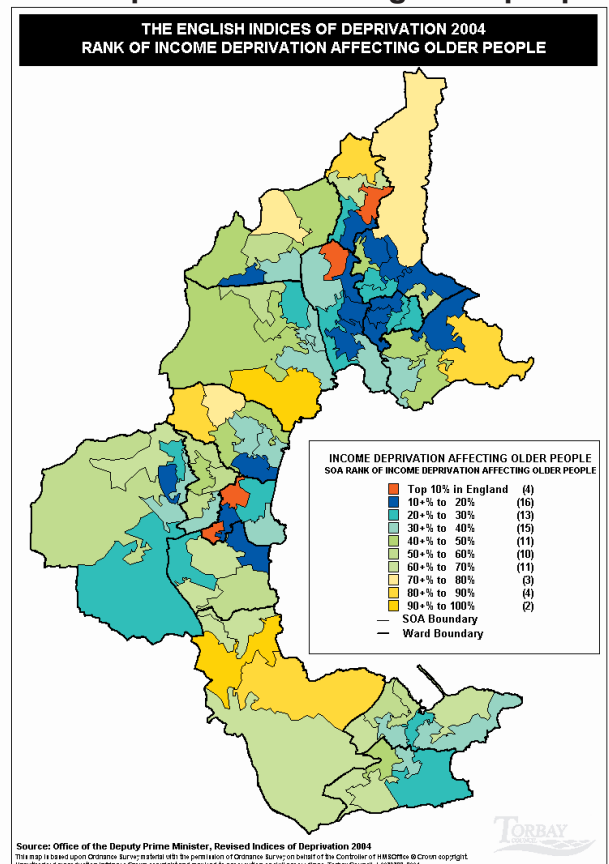
From the 2004 Indices of multiple deprivation there are a series of sub-domains that when aggregated together give the actual 7 domains that in turn lead to the Index of Multiple Deprivation.

The following maps illustrate the ranking within England for areas in Torbay for the following indicators:

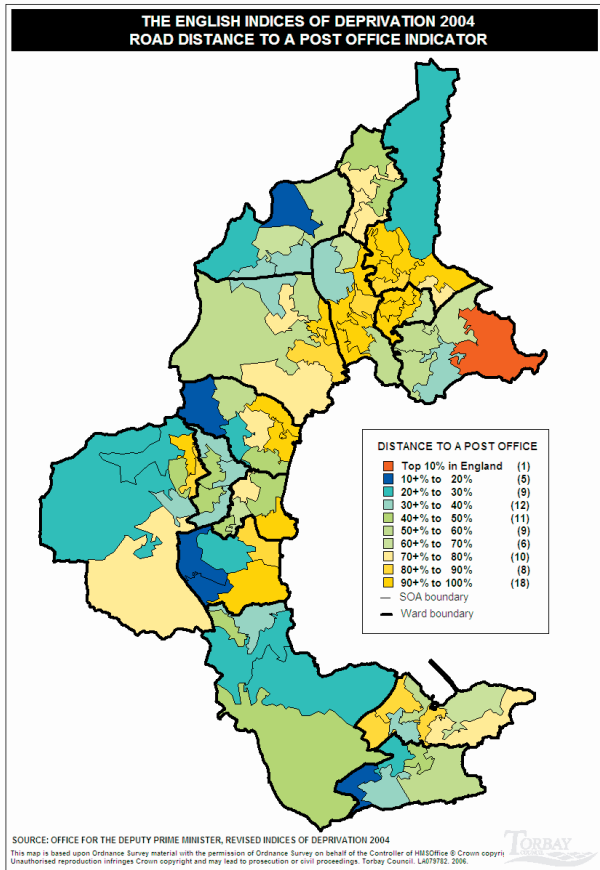
- Income deprivation affecting older people.
- Road distance to a Post Office.
- Road distance to a super market or convenience store.
- Road distance to a GP premises.
- Road distance to a primary school.

Further information of the English Indices of Deprivation 2004 can be obtained using the contact details at the end of this paper.

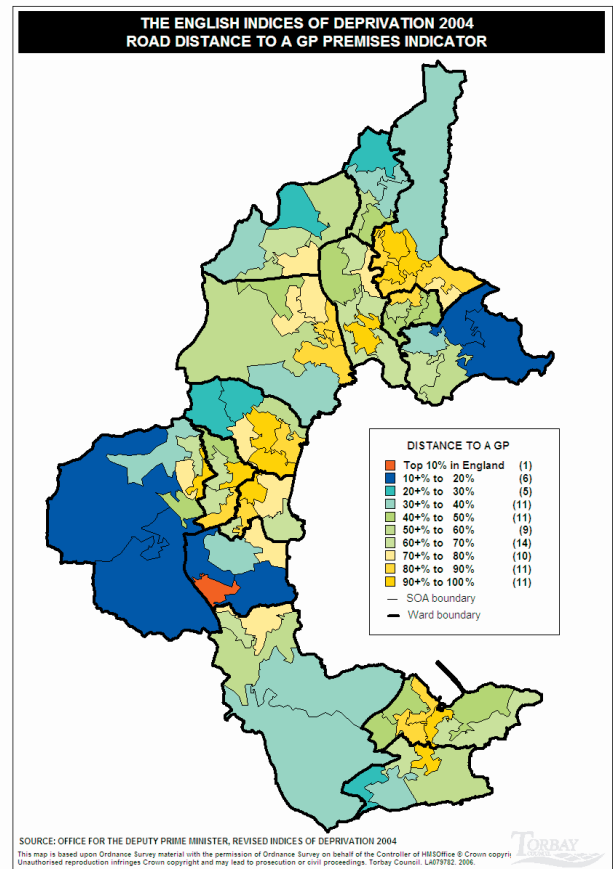
Income deprivation affecting older people



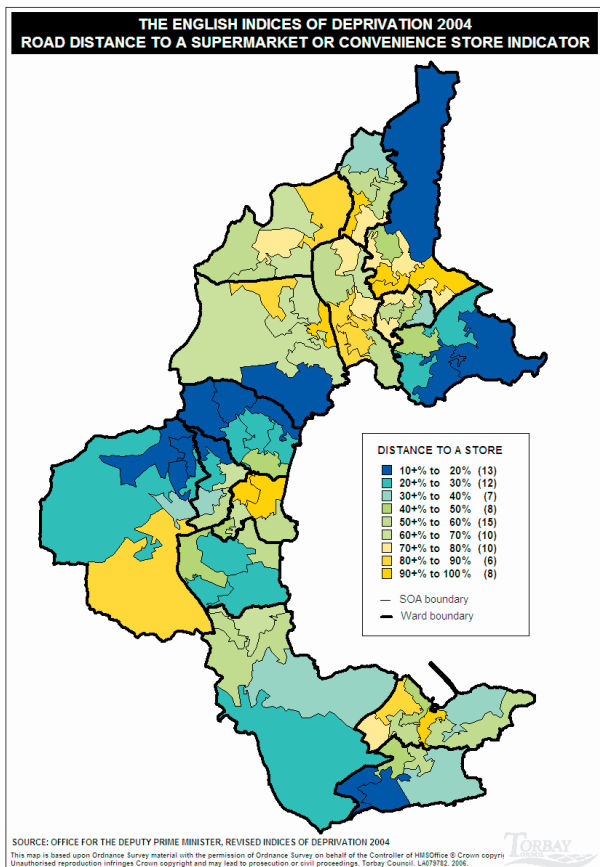
Road distance to a Post Office



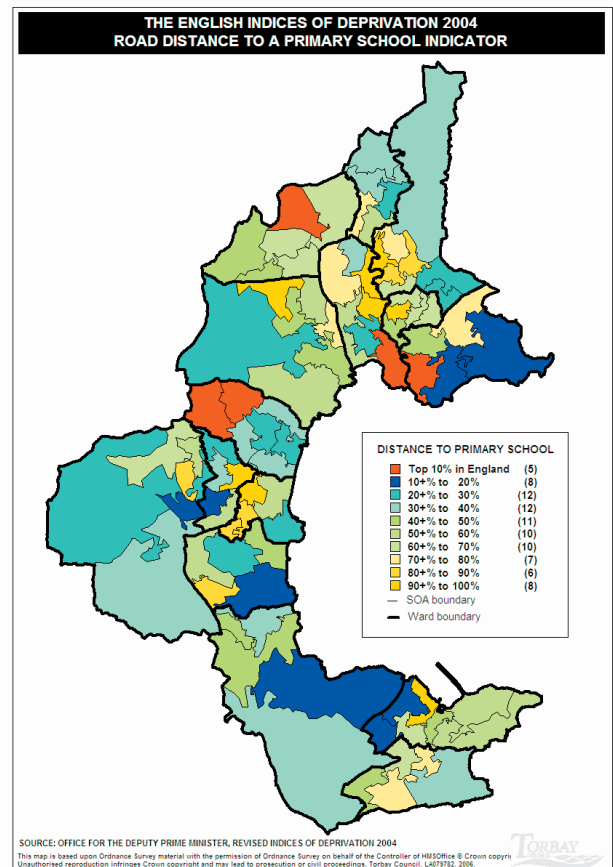
Road distance to a GP premises



Road distance to a super market or convenience store



Road distance to a primary school



BERRYHEAD WITH FURZEHAM WARD

Below the electoral geography of a ward, there exists further statistical geography. The most recognised and well used geographies are Super Output Areas (SOAs). SOAs are based in data from the 2001 census and have, on average, 650 households within. The SOA boundaries do NOT reflect neighbourhoods, they are purely for statistical comparison, and are used as a mechanism for publishing data to a relatively small area.

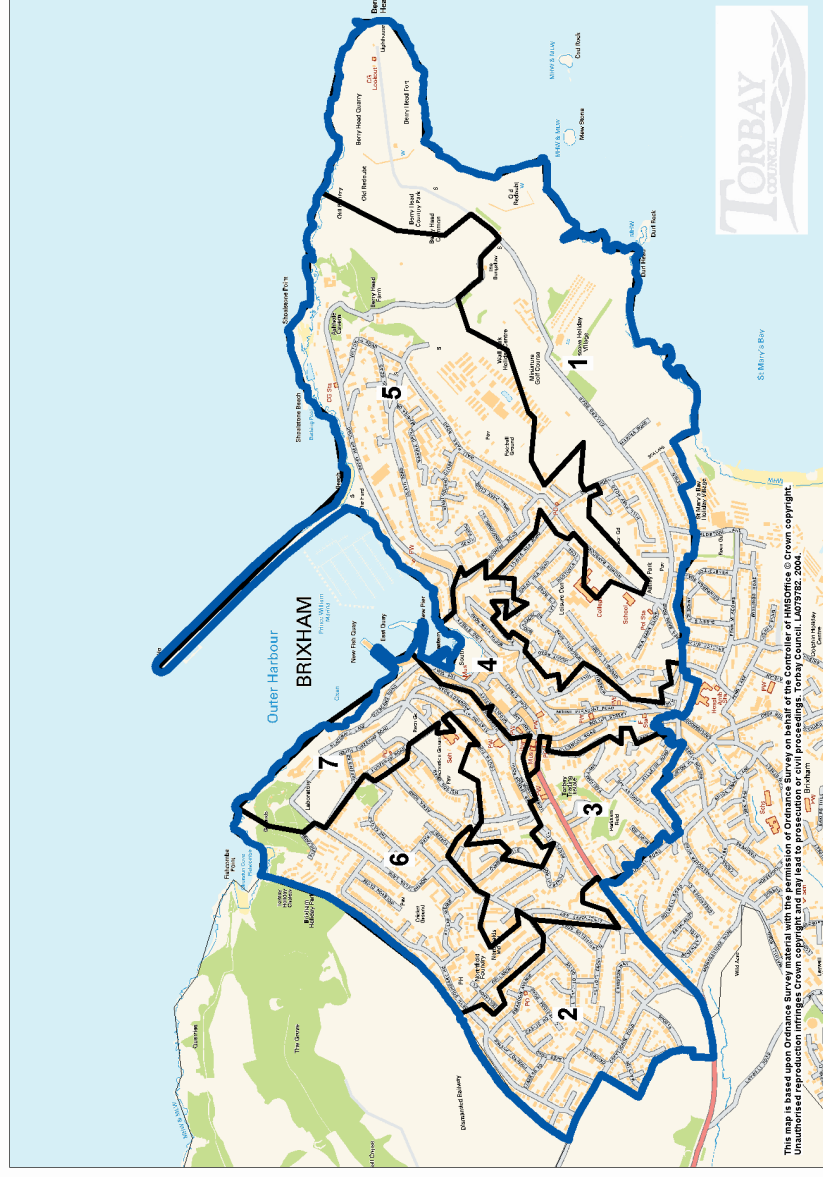
The map to the right shows the SOA structure for Berry Head with Furzeham, whilst the below table details the national ranking for the specific SOA in the Index of Multiple Deprivation and the 7 associated domains plus two further sub-domains.

The English Indices of Deprivation 2004 (revised)

Area number for ward map	Index of Multiple Deprivation	Income Domain	Employment Domain	Health and Disability domain	Education, Skills and Training Domain	Barriers to Housing Domain	Crime and Disorder Domain	Living Environment Domain	Income deprivation affecting children	Income deprivation affecting older people
	RANK	RANK	RANK	RANK	RANK	RANK	RANK	RANK	RANK	RANK
1	12,916	12,787	8,546	11,738	13,279	19,430	20,971	12,573	17,768	12,085
2	20,258	17,843	11,234	17,087	20,008	25,855	29,693	25,288	18,853	20,996
3	11,358	9,631	7,907	13,289	13,008	16,812	19,895	10,156	11,993	10,080
4	6,984	5,940	4,620	12,285	10,791	18,940	19,040	1,384	6,547	8,655
5	16,085	16,329	10,776	17,101	15,287	16,831	27,667	11,423	14,747	20,351
6	15,938	14,344	10,980	16,153	13,450	20,180	25,965	16,191	15,641	16,919
7	12,274	13,114	10,284	16,156	14,566	20,796	14,511	3,462	12,850	17,005

Source: Office of the Deputy Prime Minister, The English Indices of Deprivation 2004 (revised)

Areas shaded in grey are SOAs ranked within the top 10% most deprived in England



For further information please contact
The Consultation and Research Team
Torbay Council

Tel: (01803) 20 8829 / 8827

E-mail: statistics@torbay.gov.uk

DLH/03/07