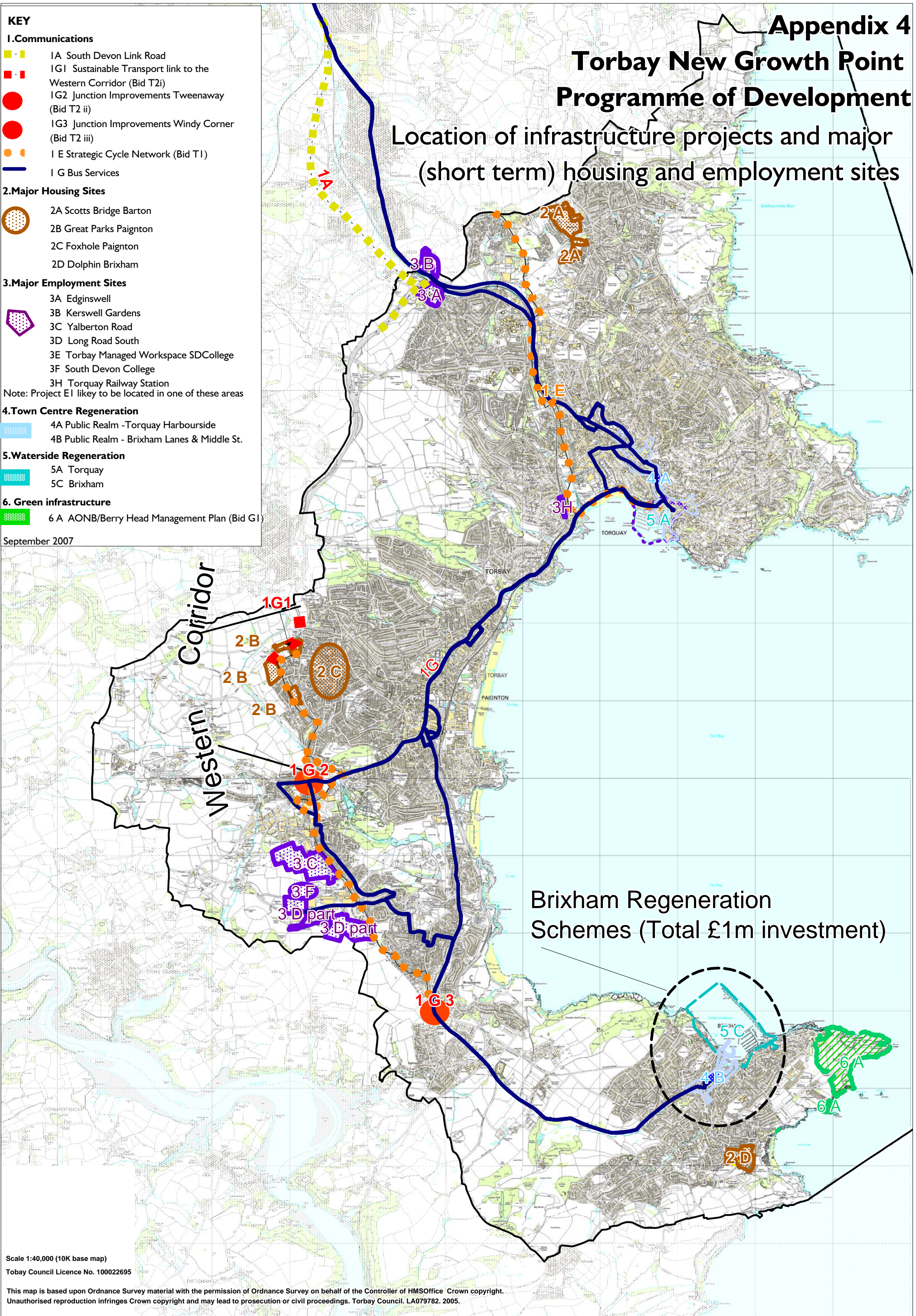


# Torbay New Growth Point Programme of Development

Location of infrastructure projects and major (short term) housing and employment sites



**KEY**

**1. Communications**

- 1A South Devon Link Road
- 1G1 Sustainable Transport link to the Western Corridor (Bid T2i)
- 1G2 Junction Improvements Tweenaway (Bid T2 ii)
- 1G3 Junction Improvements Windy Corner (Bid T2 iii)
- 1E Strategic Cycle Network (Bid T1)
- 1G Bus Services

**2. Major Housing Sites**

- 2A Scotts Bridge Barton
- 2B Great Parks Paignton
- 2C Foxhole Paignton
- 2D Dolphin Brixham

**3. Major Employment Sites**

- 3A Edginswell
- 3B Kerswell Gardens
- 3C Yalberton Road
- 3D Long Road South
- 3E Torbay Managed Workspace SDCollege
- 3F South Devon College
- 3H Torquay Railway Station

Note: Project E1 likely to be located in one of these areas

**4. Town Centre Regeneration**

- 4A Public Realm -Torquay Harbourside
- 4B Public Realm - Brixham Lanes & Middle St.

**5. Waterside Regeneration**

- 5A Torquay
- 5C Brixham

**6. Green infrastructure**

- 6A AONB/Berry Head Management Plan (Bid G1)

September 2007

Brixham Regeneration Schemes (Total £1m investment)

Scale 1:40,000 (10K base map)  
Torbay Council Licence No. 100022695

This map is based upon Ordnance Survey material with the permission of Ordnance Survey on behalf of the Controller of HMSOffice Crown copyright. Unauthorised reproduction infringes Crown copyright and may lead to prosecution or civil proceedings. Torbay Council. LA079782. 2005.