

TORBAY LOCAL PLAN

A landscape for success:

The Plan for Torbay – 2012 to 2032 and beyond

PROPOSED SUBMISSION PLAN (FEBRUARY 2014)

SCHEDULE OF PROPOSED REPLACEMENT MAIN MODIFICATIONS TO THE LOCAL PLAN

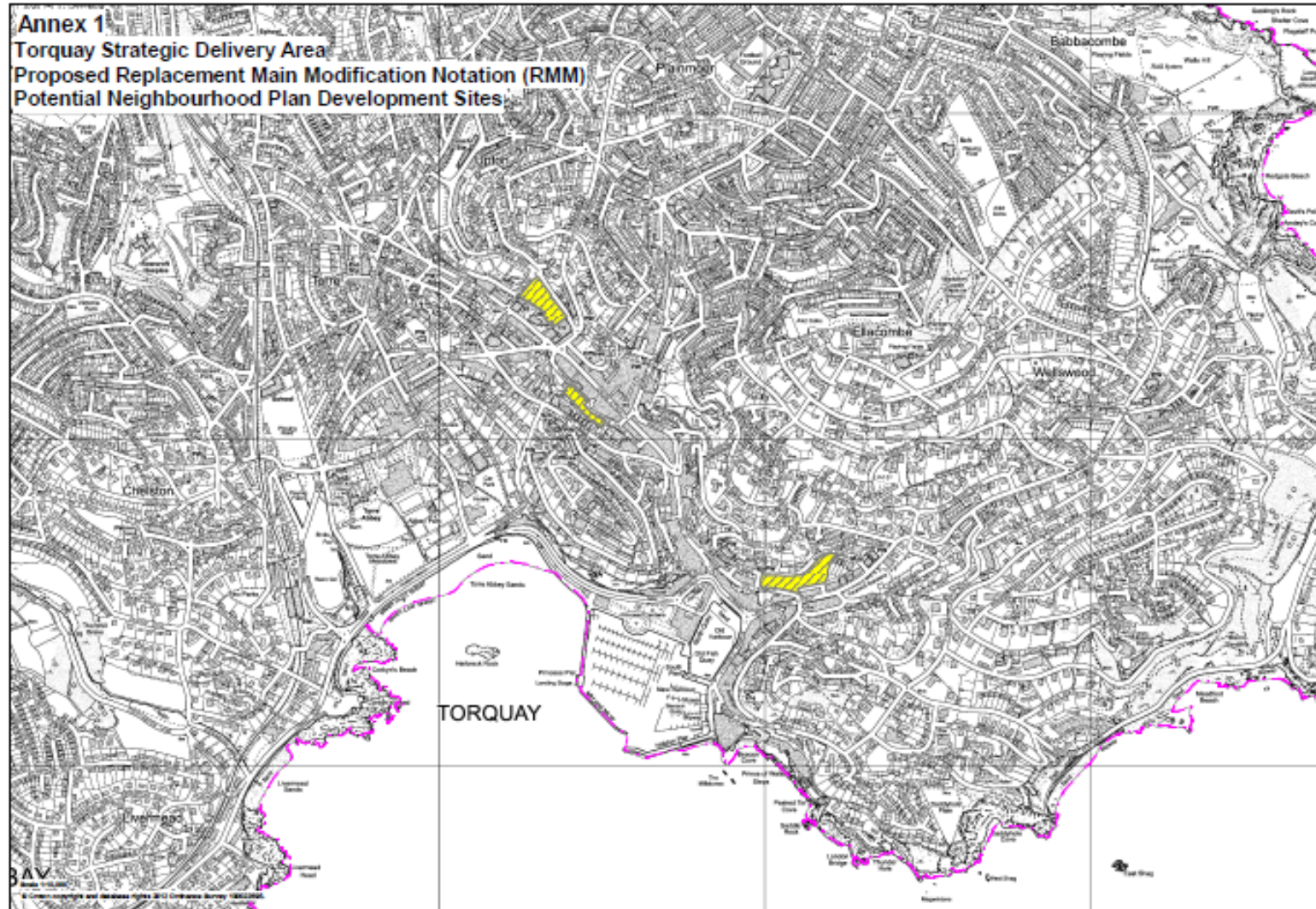
ANNEX 1: Policies Map Changes

Torbay Council – June 2015

Torquay Strategic Delivery Area

- Summary of Policies Map Replacement Main Modifications

Town Hall Car Park , Temperance Street/Lower Union Lane and Terrace Car Park

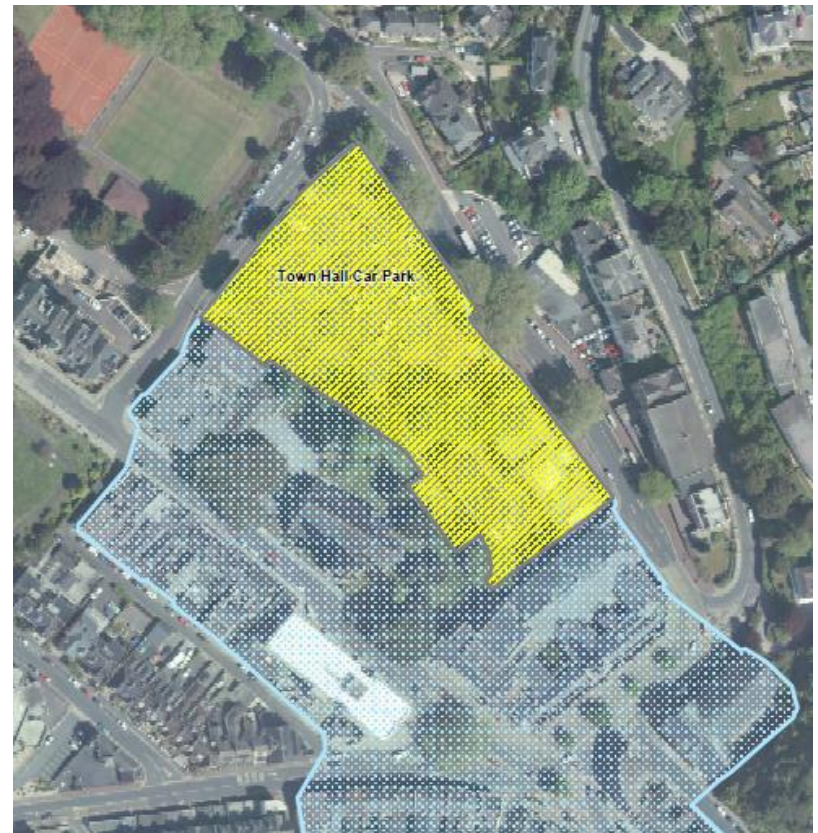
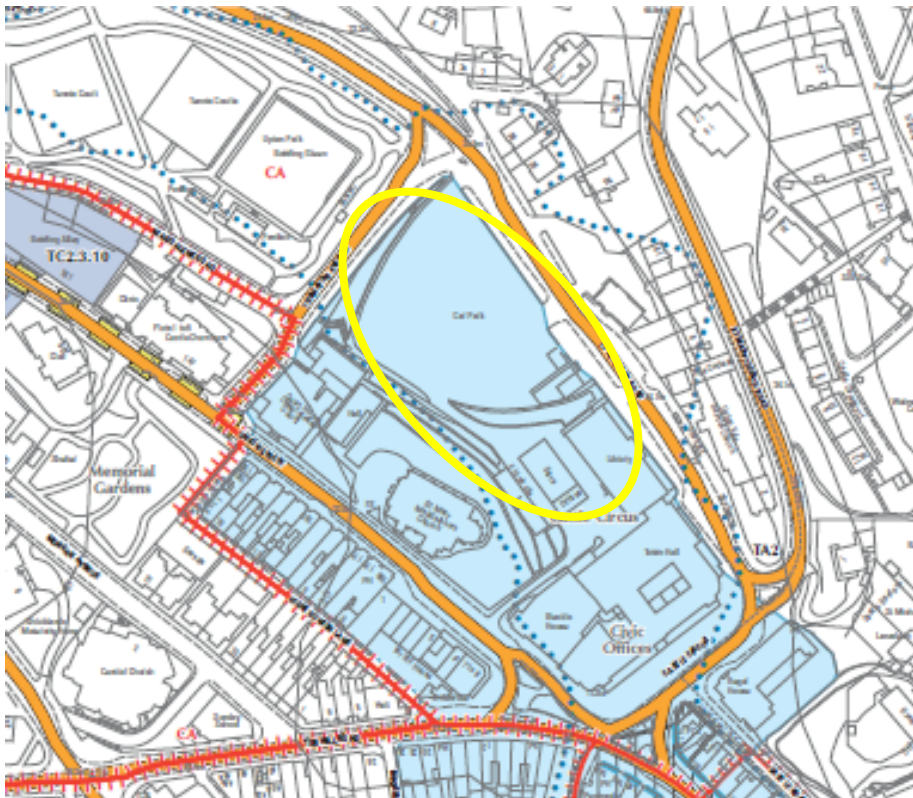


Torquay Strategic Delivery Area

Proposed Replacement Modification
Notation (RMM 14)

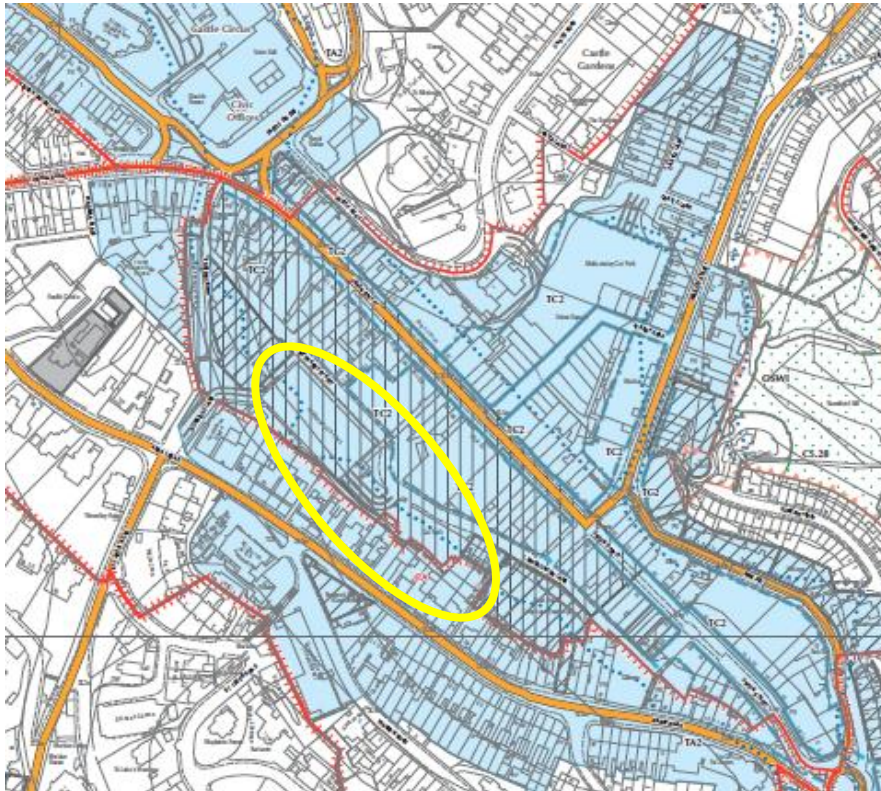
Submission Local Plan Policies Map
(Torquay Town Centre Map) Notation:
Town Hall Car Park

Food retail led development site, with
potential for housing as part of a mixed use
development, for consideration in the
Torquay Neighbourhood Plan

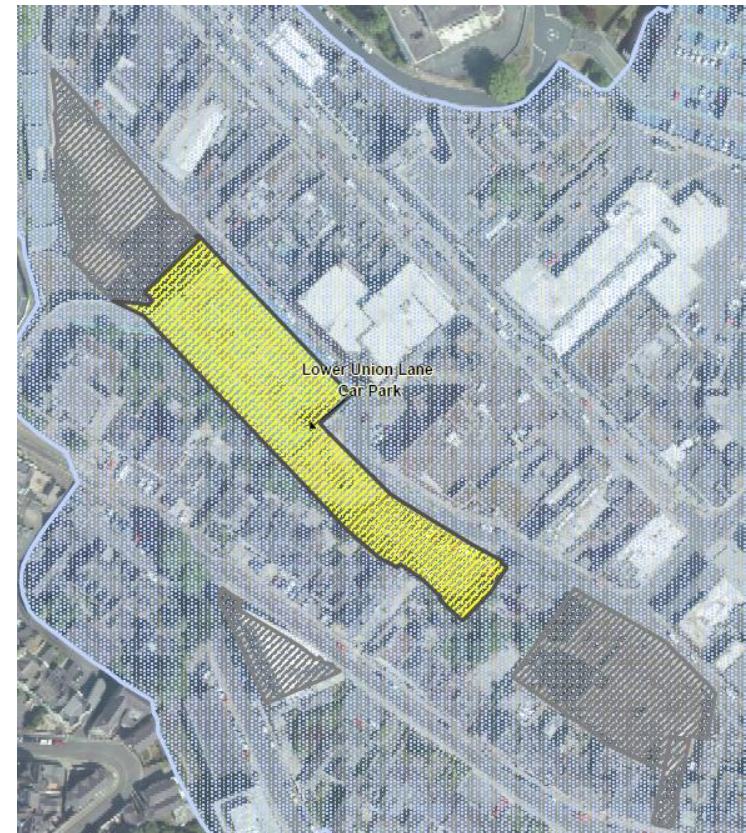


Torquay Strategic Delivery Area

**Submission Local Plan Policies Map
(Torquay Town Centre Map) Notation:
Lower Union Lane and Temperance
Street Car Parks**

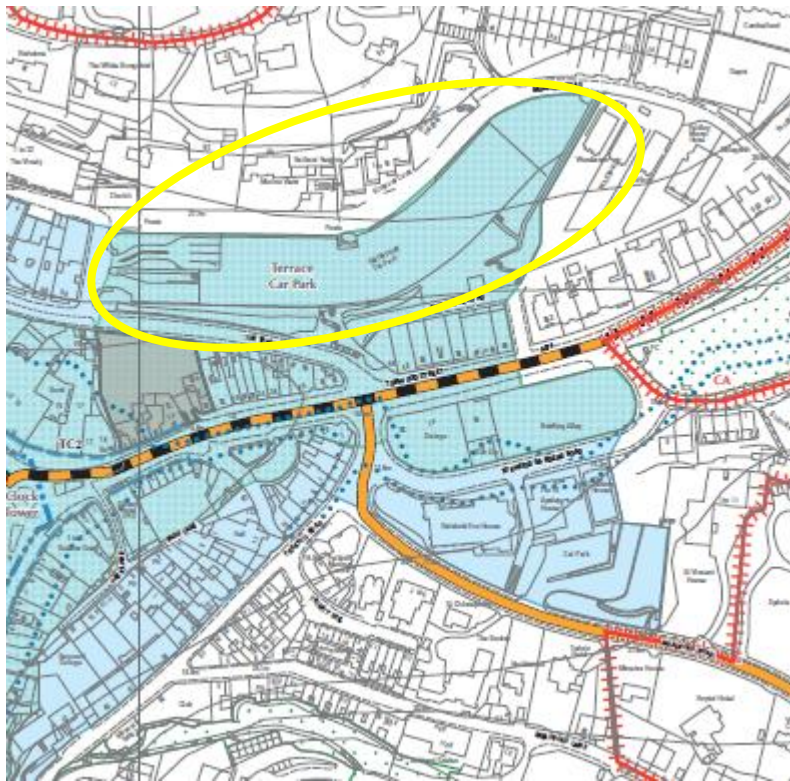


**Proposed Replacement Modification
Notation (RMM 14)
Potential housing development site (in
part) for consideration in the Torquay
Neighbourhood Plan**



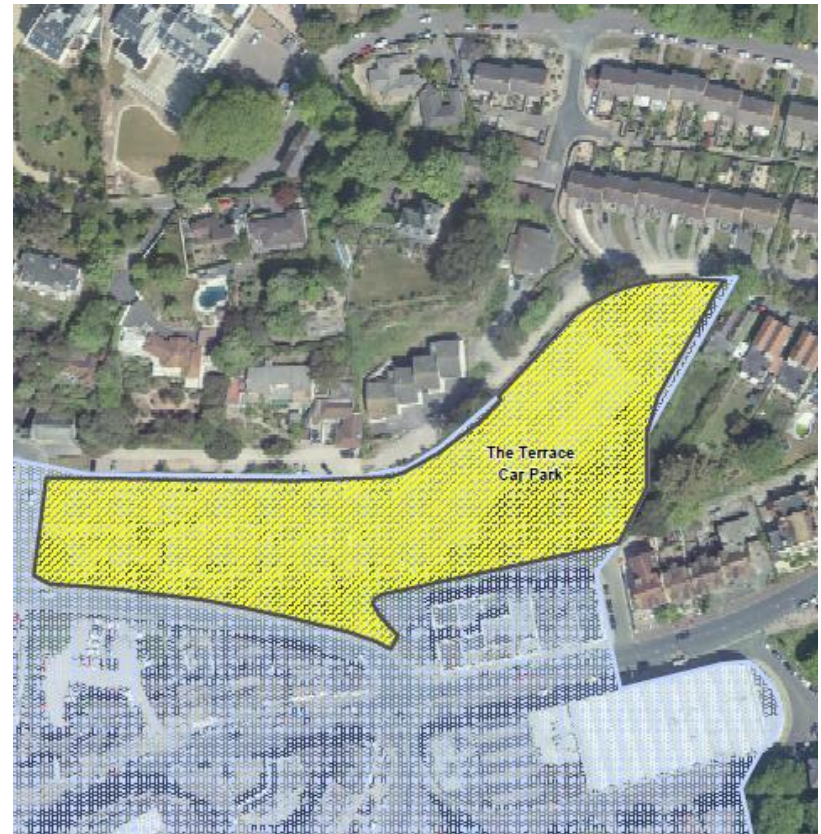
Torquay Strategic Delivery Area

**Submission Local Plan Policies Map
(Torquay Town Centre map) Notation:
Terrace Car Park**



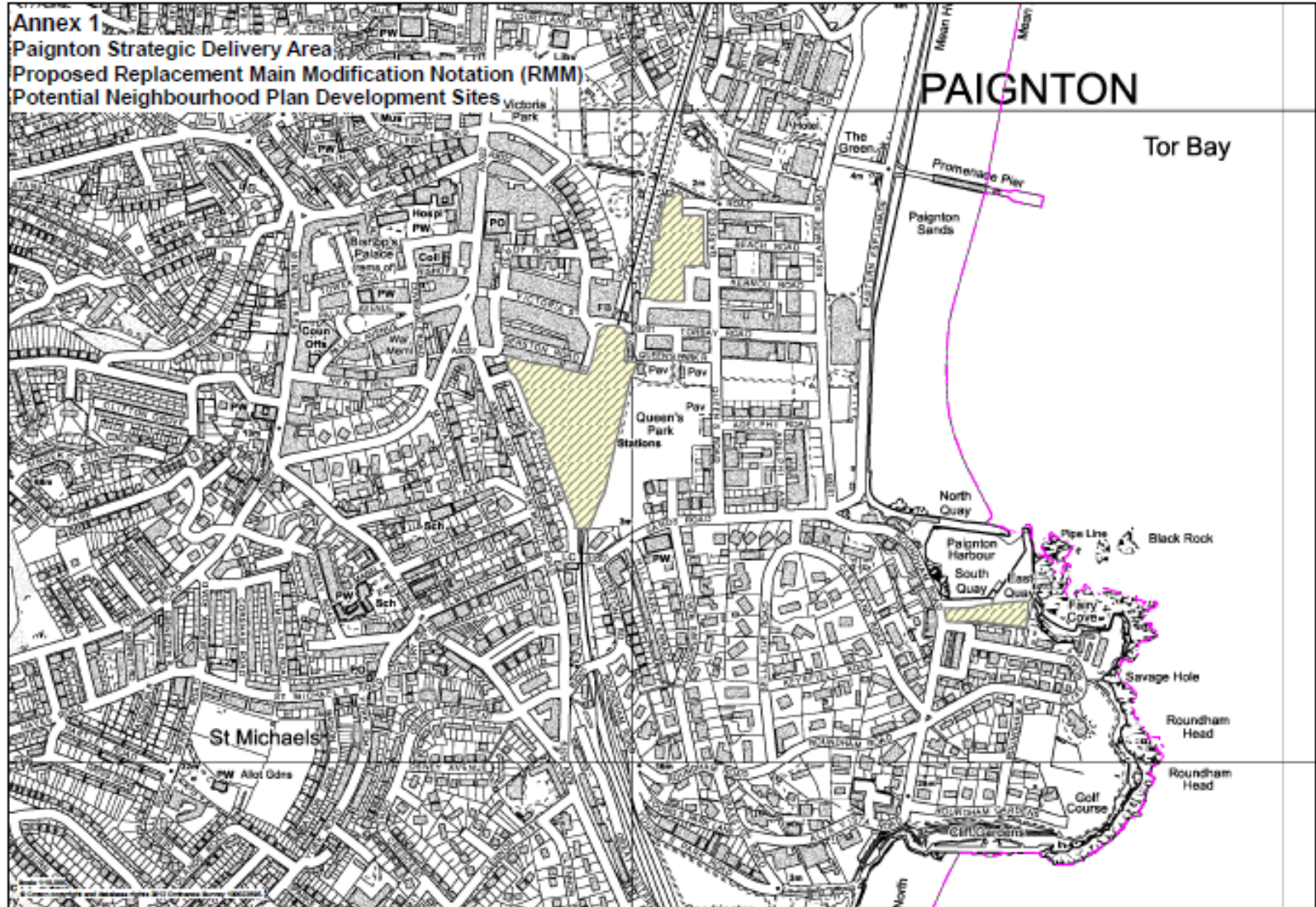
**Proposed Replacement Main Modification
Notation (RMM 14)**

**Potential housing development site (in
part) for consideration in the Torquay
Neighbourhood Plan**



Paignton Strategic Delivery Area

- Summary of Policies Map Replacement Main Modifications Victoria Square, Station Lane, and Paignton Harbour

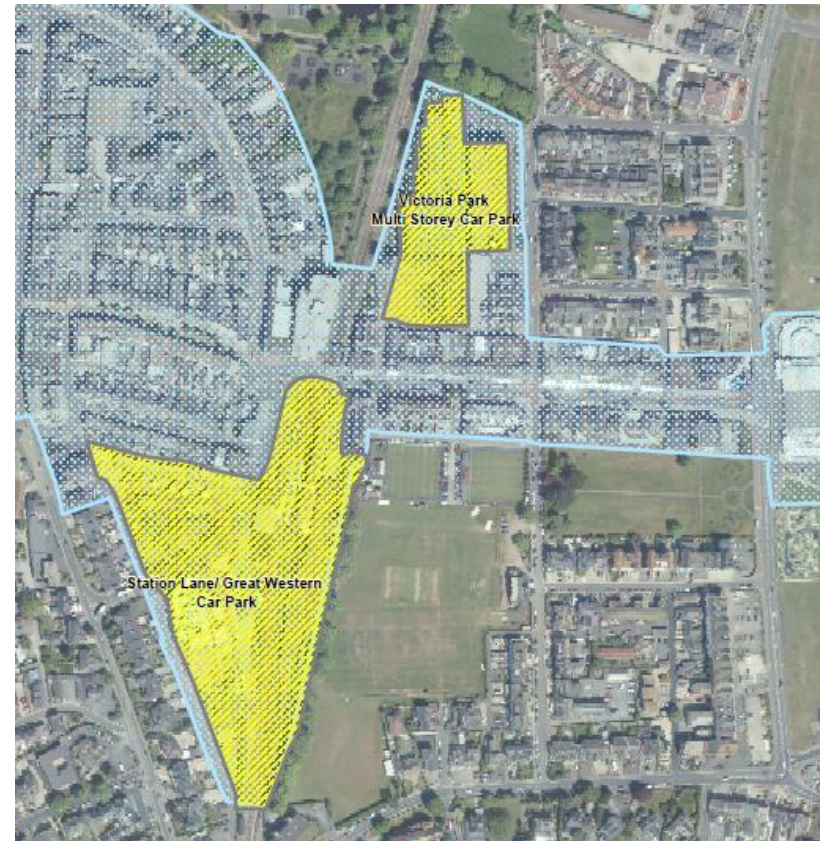
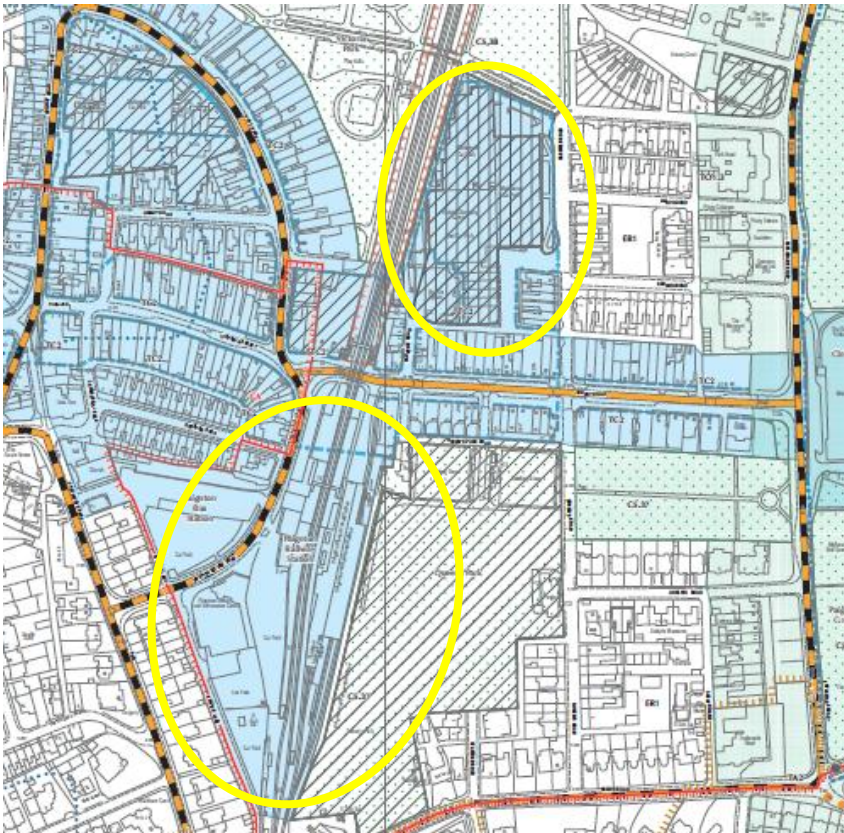


Paignton Strategic Delivery Area

Submission Local Plan Policies Map
(Paignton Town Centre Map) Notation:
Station Lane/Great Western Car Park &
Victoria Square/Multi-Storey Car Park

Proposed Replacement Main Modification
Notation (RMM 14)

Potential housing development sites (in
part) for consideration in the Paignton
Neighbourhood Plan



Paignton Strategic Delivery Area

Submission Local Plan Policies Map
(Paignton Town Centre Map) Notation:
Paignton Harbour Car Park

Proposed Replacement Main
Modification Notation (RMM 14)

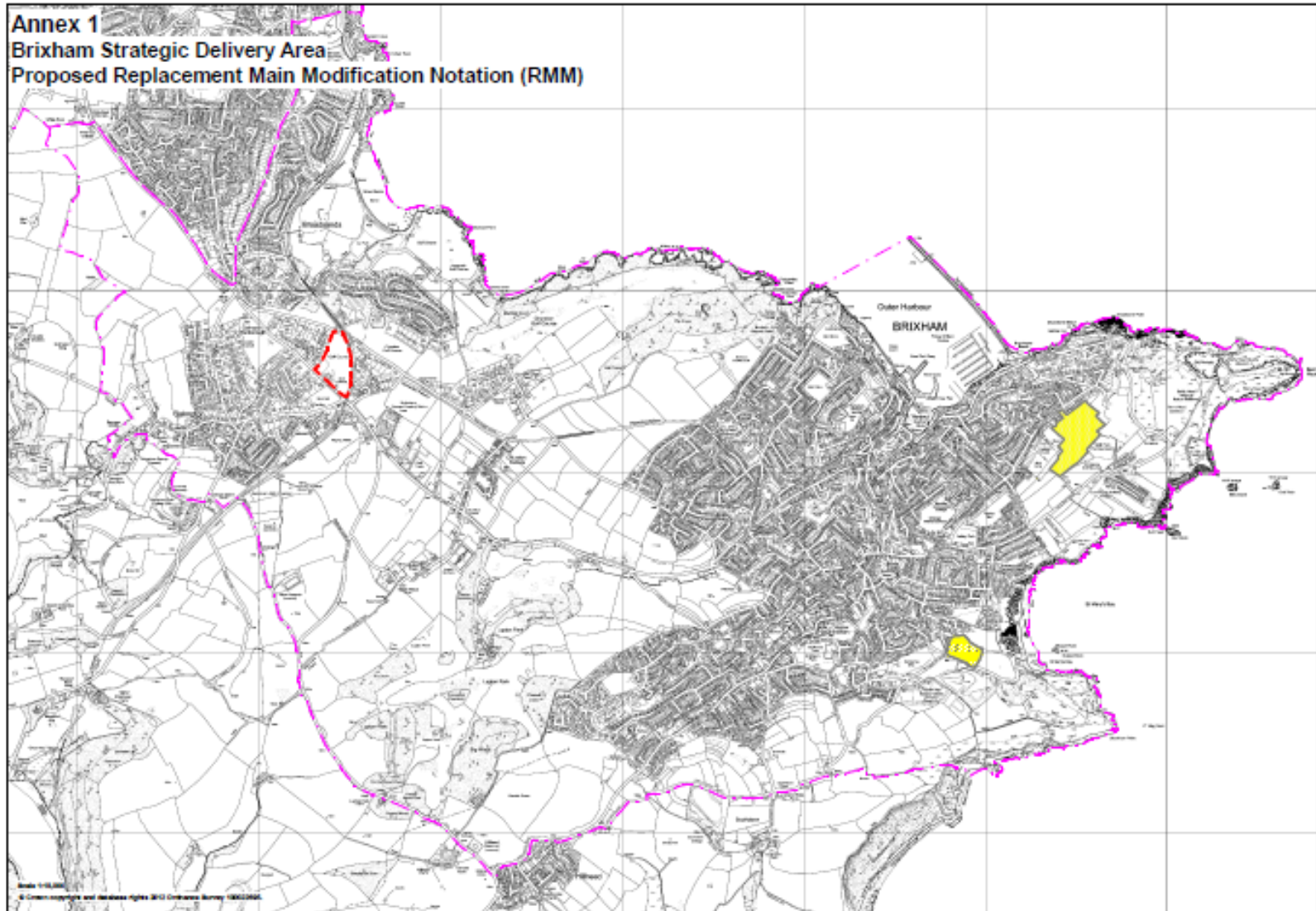
Potential housing development (in
part) site for consideration in the
Paignton Neighbourhood Plan



Brixham Strategic Delivery Area

- Summary of Policies Map Replacement Main Modifications

Churston Golf Club , Wall Park and Sharkham Village sites

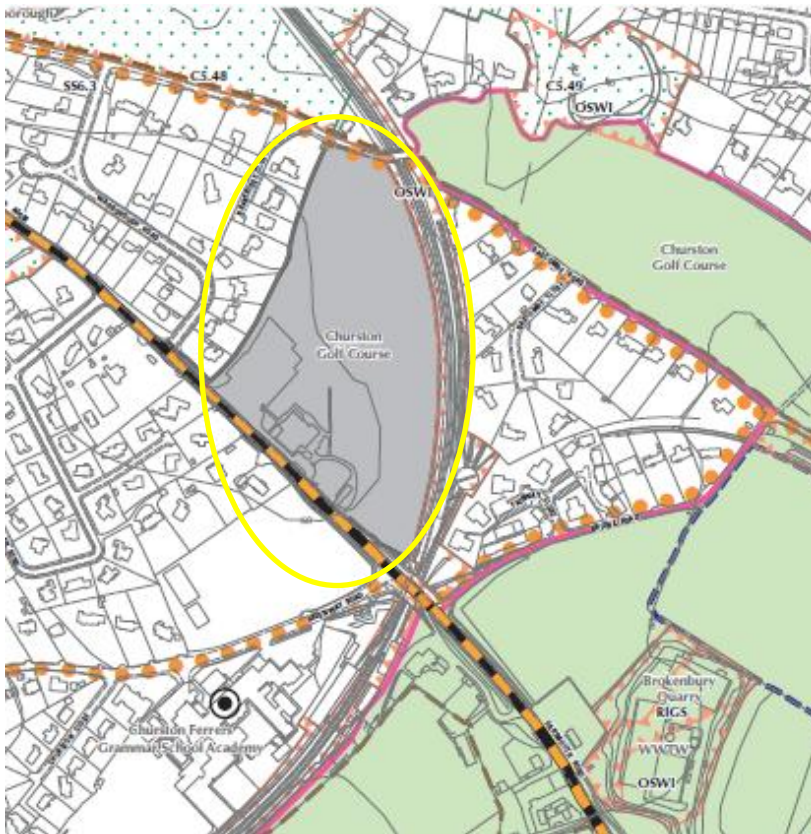


Brixham Strategic Delivery Area

**Submission Local Plan Policies
Map (Sheet 31) Notation:
Churston Golf Club**

**Proposed Replacement Main Modification
Notation (RMM 12 & 14)**

**Remove designation as potential housing
development site for consideration in the
Brixham Peninsula Neighbourhood Plan**



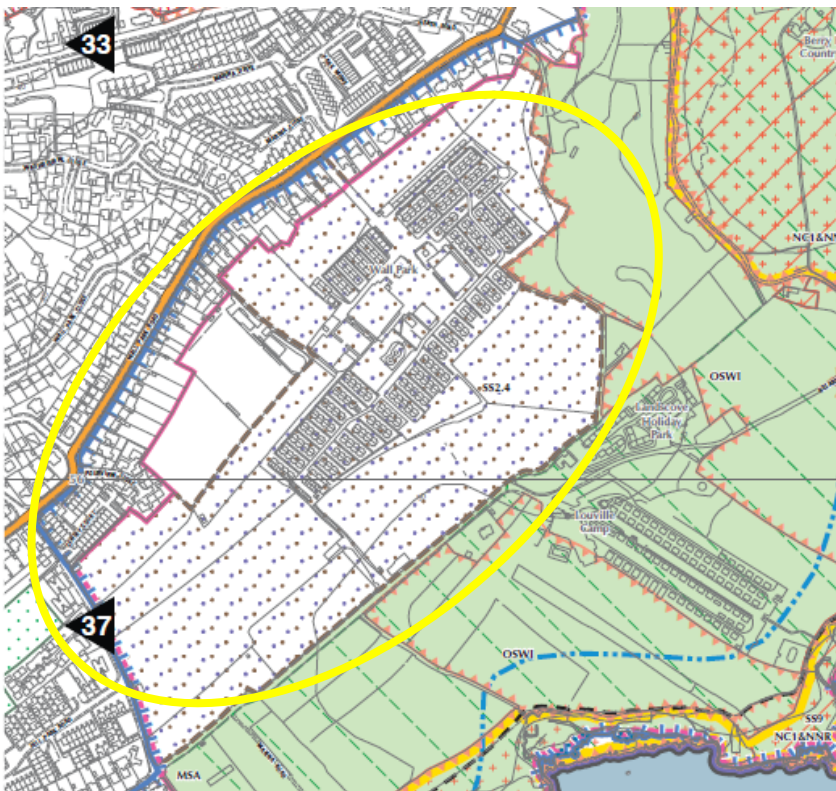
Brixham Strategic Delivery Area

Submission Local Plan Policies Map
(Sheet 34) Notation:

Wall Park Future Growth Area
(Policy SS2.4)

Proposed Replacement Main Modifications
Notation (RMM 3 & 14)

Delete Wall Park Future Growth Area : now
deliverable site (to form part of 5 year land
supply). Amend C1 boundaries accordingly



Brixham Strategic Delivery Area

Proposed Replacement Main Modifications
Notation (RMM 12)

Submission Local Plan Policies
Map (Sheet 39) Notation:
Sharkham

Remove designation as Committed Development
Site from section of Sharkham site that forms
part of offsite mitigation for approved
development. Amend C1 boundary accordingly.

