

Location reference:	Brixham
Policy Unit reference:	6b60 and 6b61
SUMMARY OF PREFERRED PLAN RECOMMENDATIONS AND JUSTIFICATION	
Plan:	
<p>The long term Plan is to continue to protect the various residential, commercial, heritage and tourist assets which make up the town and harbour at Brixham against the risk of flooding and erosion. To the east of Brixham Harbour breakwater, towards Berry Head, the shoreline is undefended and the cliffs along this section are important for their geological/geomorphological value within the English Riviera Geopark site; here. The long term vision for this stretch is to allow the natural evolution of this part of the coast to continue and retain this value. The resistant nature of these cliffs means that there will negligible erosion over the next century and therefore no loss of assets.</p> <p>Of significance to achievement of this Plan is the presence of the Brixham Harbour breakwater, as this structure influences wave action along the western part of this section and provides protection to much of this area.</p>	
Preferred policies to implement Plan:	
From present day (short term):	<p>From the present day, the policy is to continue to maintain existing defences along the Brixham frontage to Hold the Line. This would include the Brixham Harbour breakwater. The limited sediment linkages along this frontage mean that this is unlikely to have a detrimental impact along the rest of the coast.</p> <p>Along the undefended hard rock stretches of coast, where little or no change in cliffline position is expected, a policy of No Active Intervention would apply.</p>
Medium term:	<p>The medium term policy is to continue to Hold the Line to protect the town of Brixham. Higher defences may be required towards the end of this period to provide adequate protection. Maintenance of the Brixham Harbour breakwater would also be required.</p> <p>Along the undefended parts of this coast that consist of very hard rock cliffs, the medium term policy remains as No Active Intervention, with negligible cliff recession predicted.</p>
Longer-term:	<p>The long term policy is to continue to Hold the Line around the town of Brixham. This would involve maintenance and likely improvement of these defences during this period to maintain adequate levels of protection. If not undertaken in the preceding epochs, then higher defences may be required to maintain adequate levels of protection.</p> <p>Along the undefended parts of this coast that consist of very hard rock cliffs, the long term policy is for No Active Intervention to continue. Negligible cliff recession is predicted by 2105.</p>

Summary of Specific Policies

Policy Unit		Preferred Policies		
		Short term	Medium term	Long term
6b60	Churston Cove (East) to Shoalstone Point	Continue to maintain existing defences under a Hold the Line policy.	Continue to maintain existing defences under a Hold the Line policy.	Continue to maintain existing defences under a Hold the Line policy.
6b61	Shoalstone Point to Berry Head	Allow natural coastal evolution to continue	Allow natural coastal evolution to continue	Allow natural coastal evolution to continue

The above provides the *local* details in respect of the SMP-wide policy presented in the preceding sections of this Plan document. These details *must* be read in the context of the wider-scale issues and policy implications, as reported therein.

Policy Unit	Preferred Policies		
	Short term	Medium term	Long term
	through No Active Intervention.	through No Active Intervention.	through No Active Intervention.

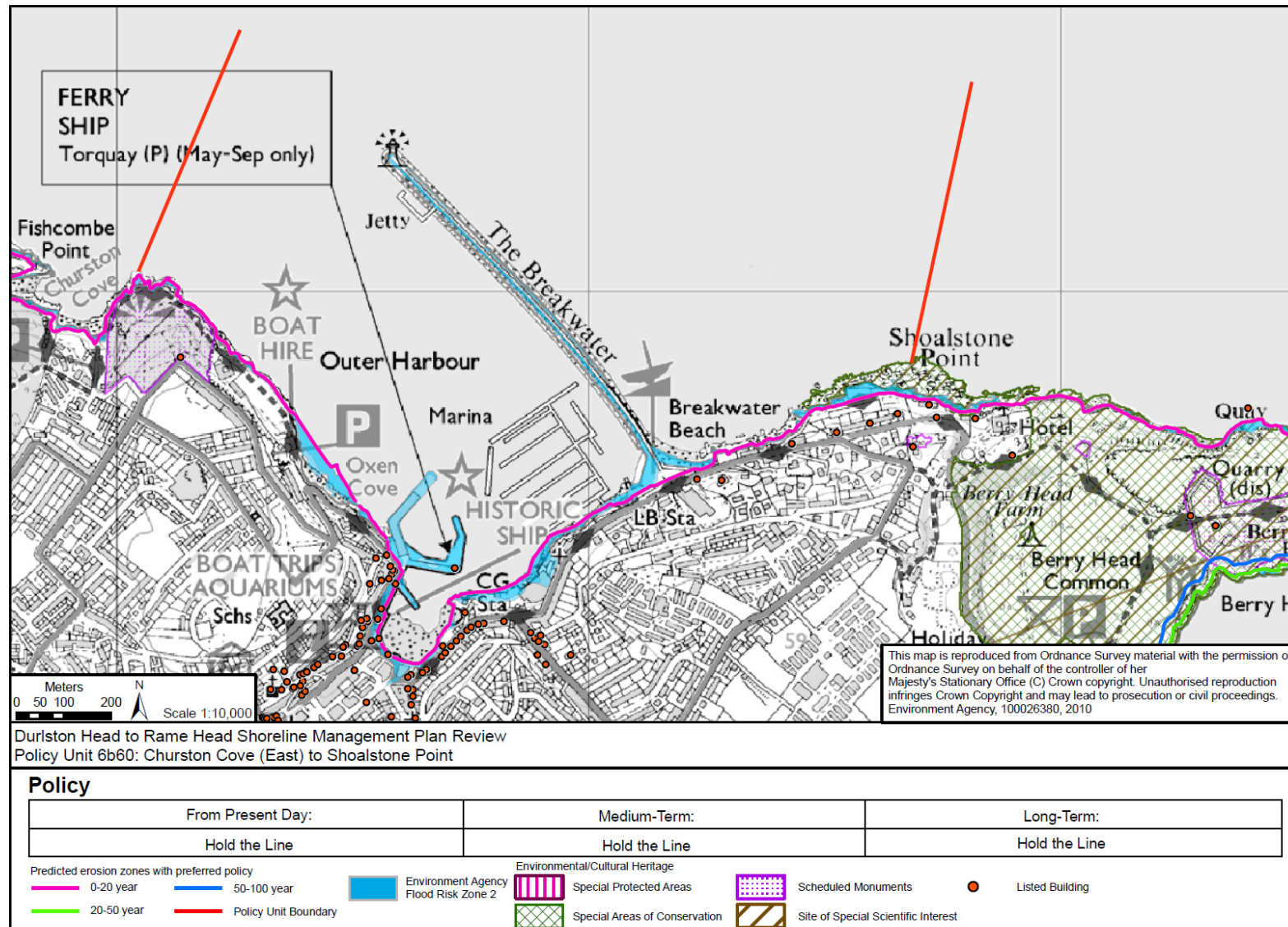
The above provides the local details in respect of the SMP-wide policy presented in the preceding sections of this Plan document. These details must be read in the context of the wider-scale issues and policy implications, as reported therein.

Location reference:		Brixham						
Policy Unit reference:		6b60 and 6b61						
IMPLICATIONS OF THE PREFERRED PLAN FOR THIS LOCATION								
Time Period	Management Activities	Property, Population and Human Health	Land Use, Infrastructure and Material Assets	Historic Environment	Landscape Character and Visual Amenity	Earth Heritage, Soils and Geology	Water	Biodiversity, Flora and Fauna
2005 – 2025	Maintenance of defences around Brixham, with no management activities along the undefended rocky coasts.	Continued protection of Brixham, Brixham Harbour and associated industrial properties, and properties along the seafront in Brixham (Berryhead Road.	Though very small, remains a potential risk of erosion to local cliff top roads towards Berry Head as a result of localised erosion, depending if and where any future occasional cliff falls occur.	Continued protection of a WW2 Battery Scheduled Monument.	Negligible changes in landscape character of South Devon AONB.	Holding the line at Brixham has the potential to have an adverse effect, by obscuring the geological features, including the English Riviera Geopark, although the remainder of the coast will remain undefended.	No known impacts on water quality.	<p>Sea level rise may accelerate natural erosion patterns resulting in the loss of cliff/ledge top grassland habitats at South Hams SAC. As this would not be a result of a change in SMP policy, there would be no significant impacts on this European site.</p> <p>Though likely to be minimal, potential for some erosion of caves and sea cliffs to the east of Shoalstone Point at Berry Head to Sharkham Point SSSI and Berry Head NNR. Also small potential loss of some designated flora and fauna.</p> <p>No adverse effect on the submerged or partially submerged sea caves in 6b55 within the Poole Bay to Lyme Bay Reefs pSAC as there is no need to extend the existing defences on the seacaves.</p>
2025 – 2055	Maintenance and improvement of defences around Brixham, with no management activities along the undefended rocky coasts.	Continued protection of Brixham, Brixham Harbour and associated industrial properties, and properties along the seafront in Brixham (Berryhead Road.	Though very small, remains a potential risk of erosion to local cliff top roads towards Berry Head as a result of localised erosion, depending if and where any future occasional cliff falls occur	Continued protection of a WW2 Battery Scheduled Monument.	Negligible changes in landscape character of South Devon AONB.	Holding the line at Brixham has the potential to have an adverse effect, by obscuring the geological features, including the English Riviera Geopark, although the remainder of the coast will remain undefended.	No known impacts on water quality.	<p>Sea level rise may accelerate natural erosion patterns resulting in the loss of cliff/ledge top grassland habitats at South Hams SAC. As this would not be a result of a change in SMP policy, there would be no significant impacts on this European site.</p> <p>Though likely to be minimal, potential for some erosion of caves and sea cliffs to the east of Shoalstone Point at Berry Head to Sharkham Point SSSI and Berry Head NNR. Also small potential loss of some designated flora and fauna.</p> <p>No adverse effect on the submerged or partially submerged sea caves in 6b55 within the Poole Bay to Lyme Bay Reefs pSAC as there is no need to extend the existing</p>

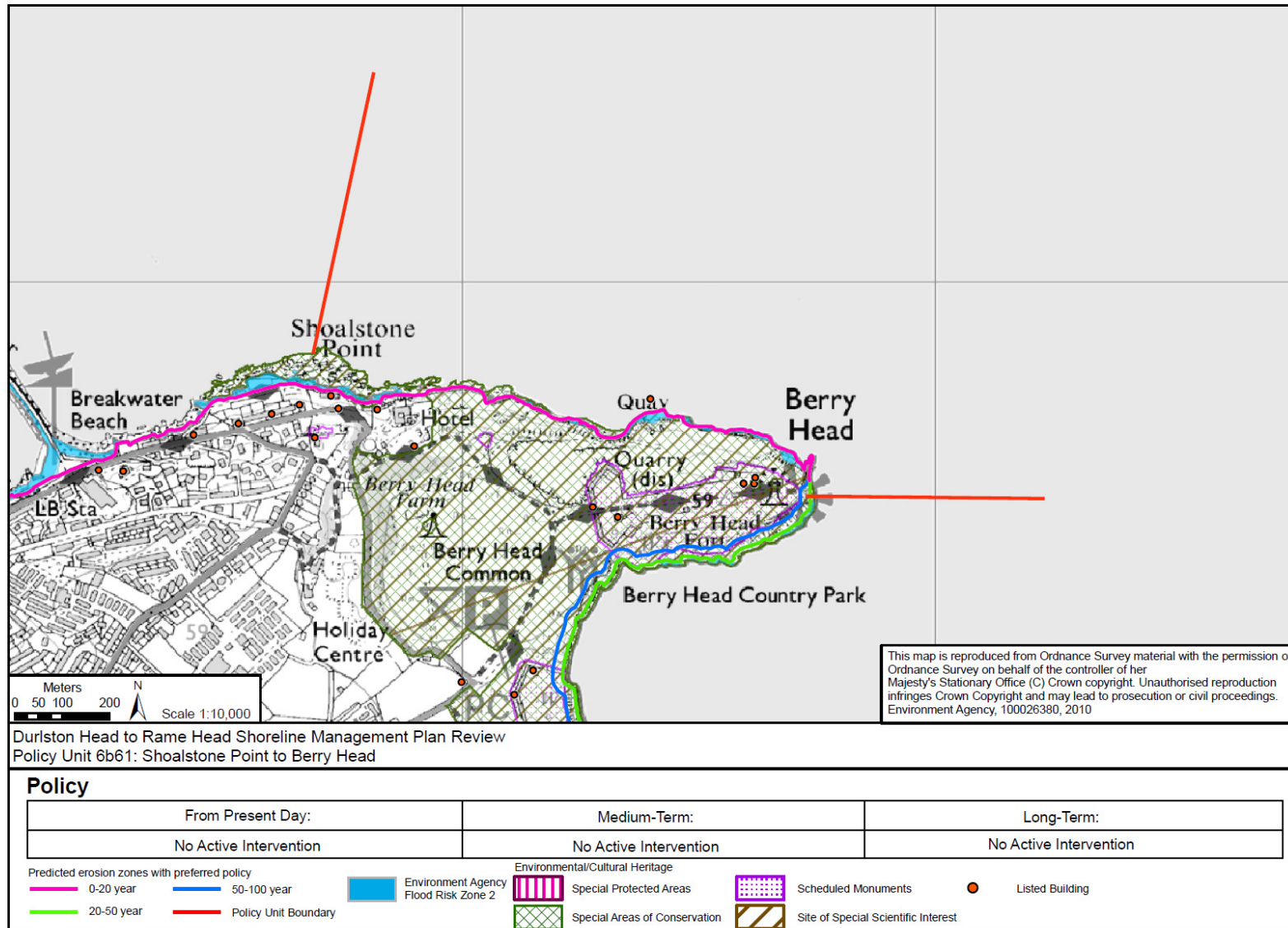
The above provides the local details in respect of the SMP-wide policy presented in the preceding sections of this Plan document. These details must be read in the context of the wider-scale issues and policy implications, as reported therein.

Location reference:		Brixham						
Policy Unit reference:		6b60 and 6b61						
IMPLICATIONS OF THE PREFERRED PLAN FOR THIS LOCATION								
Time Period	Management Activities	Property, Population and Human Health	Land Use, Infrastructure and Material Assets	Historic Environment	Landscape Character and Visual Amenity	Earth Heritage, Soils and Geology	Water	Biodiversity, Flora and Fauna
2055 – 2105	Maintenance and improvement of defences around Brixham, with no management activities along the undefended rocky coasts.	Continued protection of Brixham, Brixham Harbour and associated industrial properties, and properties along the seafront in Brixham (Berryhead Road.	Though very small, remains a potential risk of erosion to local cliff top roads towards Berry Head as a result of localised erosion, depending if and where any future occasional cliff falls occur	Continued protection of a WW2 Battery Scheduled Monument.	Negligible changes in landscape character of South Devon AONB.	Holding the line at Brixham has the potential to have an adverse effect, by obscuring the geological features, including the English Riviera Geopark, although the remainder of the coast will remain undefended.	No known impacts on water quality.	defences on the seacaves. Sea level rise may accelerate natural erosion patterns resulting in the loss of cliff/ledge top grassland habitats at South Hams SAC. As this would not be a result of a change in SMP policy, there would be no significant impacts on this European site. Though likely to be minimal, potential for some erosion of caves and sea cliffs to the east of Shoalstone Point at Berry Head to Sharkham Point SSSI and Berry Head NNR. Also small potential loss of some designated flora and fauna. No adverse effect on the submerged or partially submerged sea caves in 6b55 within the Poole Bay to Lyme Bay Reefs pSAC as there is no need to extend the existing defences on the seacaves.

The above provides the local details in respect of the SMP-wide policy presented in the preceding sections of this Plan document. These details must be read in the context of the wider-scale issues and policy implications, as reported therein.



The above provides the local details in respect of the SMP-wide policy presented in the preceding sections of this Plan document. These details must be read in the context of the wider-scale issues and policy implications, as reported therein.



The above provides the local details in respect of the SMP-wide policy presented in the preceding sections of this Plan document. These details must be read in the context of the wider-scale issues and policy implications, as reported therein.