

Location reference:	Beacon Cove to Roundham Head
Policy Unit reference:	6b48 to 6b55
<b>SUMMARY OF PREFERRED PLAN RECOMMENDATIONS AND JUSTIFICATION</b>	
<b>Plan:</b>	
<p>This northern part of Tor Bay is characterised by a range of important social, commercial and heritage assets, as well as undefended rock headlands which are part of the English Riviera Geopark.</p> <p>The long term Plan is therefore to minimise the risk of flooding and erosion to a currently defended areas, whilst allowing natural retreat of the undefended cliff areas to continue. Under this policy, it is not proposed that any new defences would be constructed along the presently undefended cliffs, thereby conserving their geological value within the English Riviera Geopark site. Although this policy will protect the majority of assets, erosion risk to a section of cliff top road and one or two cliff top properties would remain.</p> <p>A key future issue within the wider Tor Bay is the technicality of maintaining sandy beaches along this important tourist resort in the future as sea levels rise. In general, the sheltered nature of Tor Bay may mean that it is feasible to retain artificially renourished beaches, which may be increasingly important as other beaches in the area and wider region are lost in the long term due to rising sea levels. As such, not only would future protection using beach recharge help to reduce the risk of flooding, it would also provide a beach of benefit to the tourism economy of the area.</p>	
<b>Preferred policies to implement Plan:</b>	
<b>From present day (short term):</b>	<p>The short term policy is to continue to protect the developed frontages, through a <b>Hold the Line</b> policy. There is already a range of defences and other structures including seawalls and revetments along the shoreline, as well as breakwaters associated with Torquay Marina. These currently protect the cliff toe from erosion and low-lying areas from flooding, although not all of the structures are coastal defence structures, e.g. the marina breakwaters. Under this policy defences would be maintained. Beaches along this frontage are expected to remain relatively stable during this period.</p> <p>Along the undefended rocky headlands, <b>No Active Intervention</b> will be adopted. Here cliff recession is likely to be low, although localised landslide events could cause recession of up to 10m in a single event. There is therefore a potential risk to a cliff top road and one or two cliff top properties. It is recommended that this erosion risk is monitored to allow sufficient time for strategies to be put in place to deal with any potential losses.</p>
<b>Medium term:</b>	<p>The medium term policy is to continue to <b>Hold the Line</b> along the developed frontages. It is likely that to maintain adequate standards of protection during this period, larger defences will be required. A beach renourishment scheme could also be considered, particularly as beaches along this stretch may start to narrow in response to sea level rise and the lack of new sediment inputs from natural sources.</p> <p>Along the undefended lengths of rock headland, the medium term policy would be to allow coastal retreat through <b>No Active Intervention</b>. This may result in increased erosion risk to the coastal road and isolated properties so this risk would need to be monitored and managed.</p>
<b>Longer-term:</b>	<p>The long term policy is to continue to <b>Hold the Line</b> to protect current assets. Due to the impacts of sea level rise, larger defences may be required to maintain adequate standards of protection. Further beach recharge could also be required if this type of scheme was implemented.</p>

*The above provides the local details in respect of the SMP-wide policy presented in the preceding sections of this Plan document. These details must be read in the context of the wider-scale issues and policy implications, as reported therein.*

Along the undefended lengths of rock headland, the long term policy would be to allow continued coastal retreat, through **No Active Intervention**. This may result in increased erosion risk to the coastal road and isolated properties; therefore this risk would need to be monitored and managed.

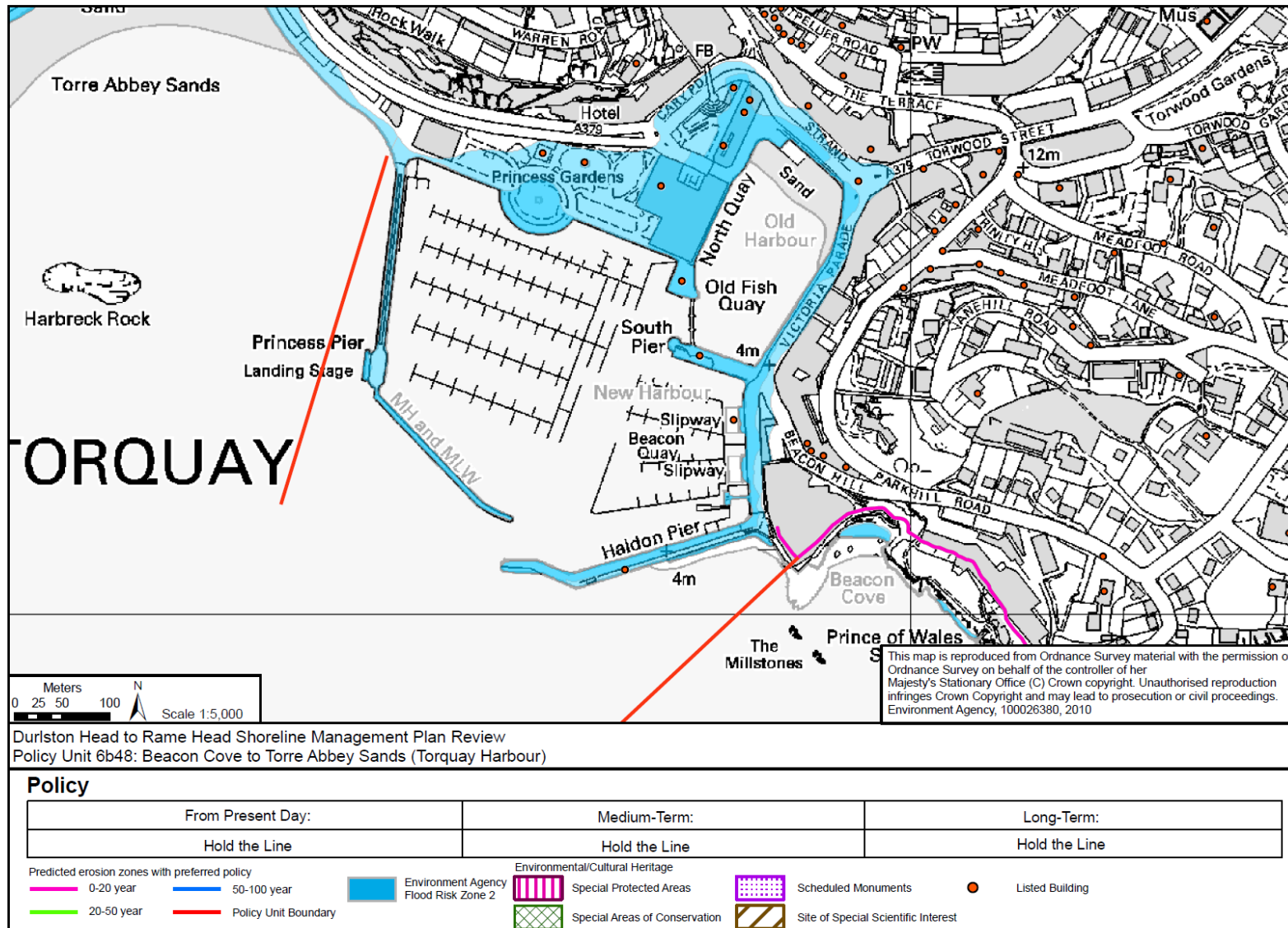
### Summary of Specific Policies

Policy Unit		Preferred Policies		
		Short term	Medium term	Long term
6b48	Beacon Cove to Torre Abbey Sands (Torquay Harbour)	Continue to maintain existing defences under a <b>Hold the Line</b> policy.	Continue to maintain existing defences under a <b>Hold the Line</b> policy.	Continue to maintain existing defences under a <b>Hold the Line</b> policy.
6b49	Torre Abbey Sands	Continue to maintain existing defences under a <b>Hold the Line</b> policy.	Continue to maintain existing defences under a <b>Hold the Line</b> policy.	Continue to maintain existing defences under a <b>Hold the Line</b> policy.
6b50	Corbyn's Head	Allow natural coastal evolution to continue through <b>No Active Intervention</b> .	Allow natural coastal evolution to continue through <b>No Active Intervention</b> .	Allow natural coastal evolution to continue through <b>No Active Intervention</b> .
6b51	Livermead Sands	Continue to maintain existing defences under a <b>Hold the Line</b> policy.	Continue to maintain existing defences under a <b>Hold the Line</b> policy.	Continue to maintain existing defences under a <b>Hold the Line</b> policy.
6b52	Livermead Head	Allow natural coastal evolution to occur through <b>No Active Intervention</b> .	Allow natural coastal evolution to occur through <b>No Active Intervention</b> .	Allow natural coastal evolution to occur through <b>No Active Intervention</b> .
6b53	Hollicombe Beach	Continue to maintain existing defences under a <b>Hold the Line</b> policy.	Continue to maintain existing defences under a <b>Hold the Line</b> policy.	Continue to maintain existing defences under a <b>Hold the Line</b> policy.
6b54	Hollicombe Head	Allow natural coastal evolution to continue through <b>No Active Intervention</b> .	Allow natural coastal evolution to continue through <b>No Active Intervention</b> .	Allow natural coastal evolution to continue through <b>No Active Intervention</b> .
6b55	Hollicombe Head to Roundham Head	Continue to maintain existing defences under a <b>Hold the Line</b> policy.	Continue to maintain existing defences under a <b>Hold the Line</b> policy.	Continue to maintain existing defences under a <b>Hold the Line</b> policy.

The above provides the *local* details in respect of the SMP-wide policy presented in the preceding sections of this Plan document. These details *must* be read in the context of the wider-scale issues and policy implications, as reported therein.

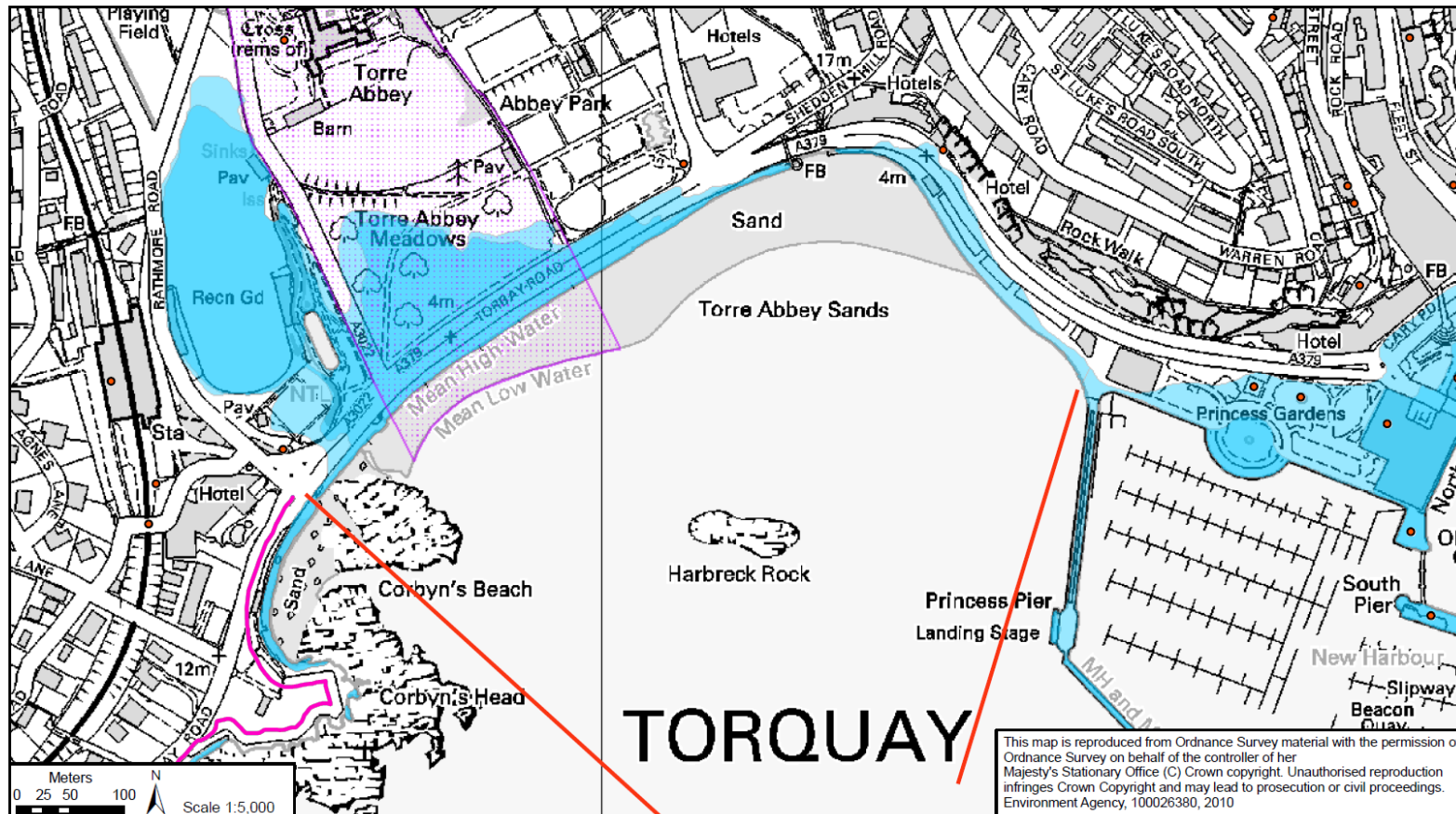
Location reference:		Beacon Cove to Roundham Head						
Policy Unit reference:		6b48 to 6b55						
IMPLICATIONS OF THE PREFERRED PLAN FOR THIS LOCATION								
Time Period	Management Activities	Property, Population and Human Health	Land Use, Infrastructure and Material Assets	Historic Environment	Landscape Character and Visual Amenity	Earth Heritage, Soils and Geology	Water	Biodiversity, Flora and Fauna
2005 – 2025	Maintenance of the existing defences and structures. Continued slow cliffline retreat in undefended areas.	Continued protection of Torquay Harbour and Paignton (Torbay), and associated industrial properties, and properties along the seafront.  Potential loss of some tourist facilities due to flood risk, especially at Paignton.	Risk of flooding to the A379 at Torquay north of the marina	Protection of Princess Gardens and Royal Terrace Gardens Registered Park and Garden from flooding  Protection of a large area of Torre Abbey Scheduled Monument from flooding	Minor change in landscape character of South Devon AONB through raising defences.	Continuation of natural processes is key to the integrity of the English Riviera Geopark, New Cut Torquay and Roundham Head SSSIs; NAI in these areas would continue to maintain these features – <i>beneficial impact</i> .  However, holding the line in some areas has the potential to <i>adversely affect</i> the geological features.	No known impacts on water quality.  Works to Hold the Line should be implemented so as to not adversely impact on the water quality status of the coastal waters or compromise the achievement of WFD water quality targets.	No adverse effect on the submerged or partially submerged sea caves in 6b55 within the Poole Bay to Lyme Bay Reefs pSAC as there is no need to extend the existing defences on the seacaves.
2025 – 2055	Maintenance and improvement of the defences and structures. Continued slow cliffline retreat in undefended areas.	Continued protection of Torquay Harbour and Paignton (Torbay), and associated industrial properties, and properties along the seafront.  Potential loss of some tourist facilities due to flood risk, especially at Paignton.  Low erosion risk to isolated properties along undefended headlands.	Risk of flooding to the A379 at Torquay north of the marina  Low erosion risk to cliff top coastal road.	Protection of Princess Gardens and Royal Terrace Gardens Registered Park and Garden from flooding  Protection of a large area of Torre Abbey Scheduled Monument from flooding	Minor change in landscape character of South Devon AONB through raising defences.	Continuation of natural processes is key to the integrity of the English Riviera Geopark, New Cut Torquay and Roundham Head SSSIs; NAI in these areas would continue to maintain these features.  However, holding the line in some areas has the potential to adversely affect the geological features.	A beach renourishment scheme has the potential to impact on water quality.  Works to Hold the Line should be implemented so as to not adversely impact on the water quality status of the coastal waters or compromise the achievement of WFD water quality targets.	No adverse effect on the submerged or partially submerged sea caves in 6b55 within the Poole Bay to Lyme Bay Reefs pSAC as there is no need to extend the existing defences on the seacaves.
2055 – 2105	Maintenance and improvement of the defences and structures. Continued slow cliffline retreat in undefended areas.	Continued protection of Torquay Harbour, and Paignton (Torbay), and associated industrial properties, and properties along the seafront.  Potential loss of some tourist facilities due to flood risk, especially at Paignton.  Low erosion risk to isolated properties along undefended headlands.	Risk of flooding to the A379 at Torquay north of the marina  Low erosion risk to cliff top coastal road.	Protection of Princess Gardens and Royal Terrace Gardens Registered Park and Garden from flooding  Protection of a large area of Torre Abbey Scheduled Monument from flooding	Minor change in landscape character of South Devon AONB through raising defences.	Continuation of natural processes is key to the integrity of the English Riviera Geopark, New Cut Torquay and Roundham Head SSSIs; NAI in these areas would continue to maintain these features.  However, holding the line in some areas has the potential to adversely affect the geological features.	A beach renourishment scheme has the potential to impact on water quality.  Works to Hold the Line should be implemented so as to not adversely impact on the water quality status of the coastal waters or compromise the achievement of WFD water quality targets.	No adverse effect on the submerged or partially submerged sea caves in 6b55 within the Poole Bay to Lyme Bay Reefs pSAC as there is no need to extend the existing defences on the seacaves.

The above provides the local details in respect of the SMP-wide policy presented in the preceding sections of this Plan document. These details must be read in the context of the wider-scale issues and policy implications, as reported therein.



The above provides the local details in respect of the SMP-wide policy presented in the preceding sections of this Plan document. These details must be read in the context of the wider-scale issues and policy implications, as reported therein.





Durlston Head to Rame Head Shoreline Management Plan Review  
Policy Unit 6b49: Torre Abbey Sands

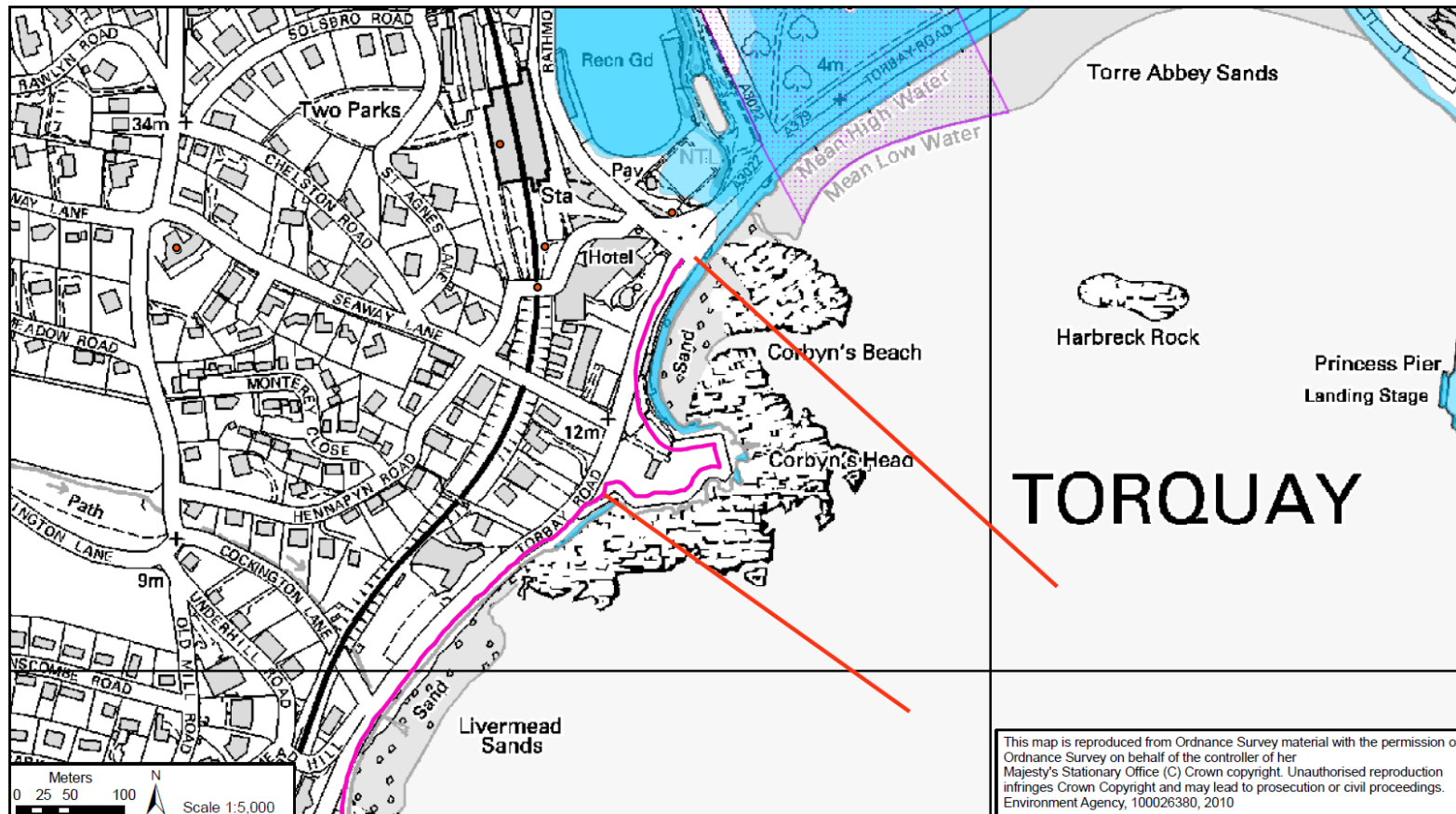
**Policy**

From Present Day:	Medium-Term:	Long-Term:
Hold the Line	Hold the Line	Hold the Line

Predicted erosion zones with preferred policy

- 0-20 year
- 20-50 year
- 50-100 year
- Environment Agency Flood Risk Zone 2
- Environmental/Cultural Heritage
- Special Protected Areas
- Special Areas of Conservation
- Scheduled Monuments
- Site of Special Scientific Interest
- Listed Building

The above provides the local details in respect of the SMP-wide policy presented in the preceding sections of this Plan document. These details must be read in the context of the wider-scale issues and policy implications, as reported therein.



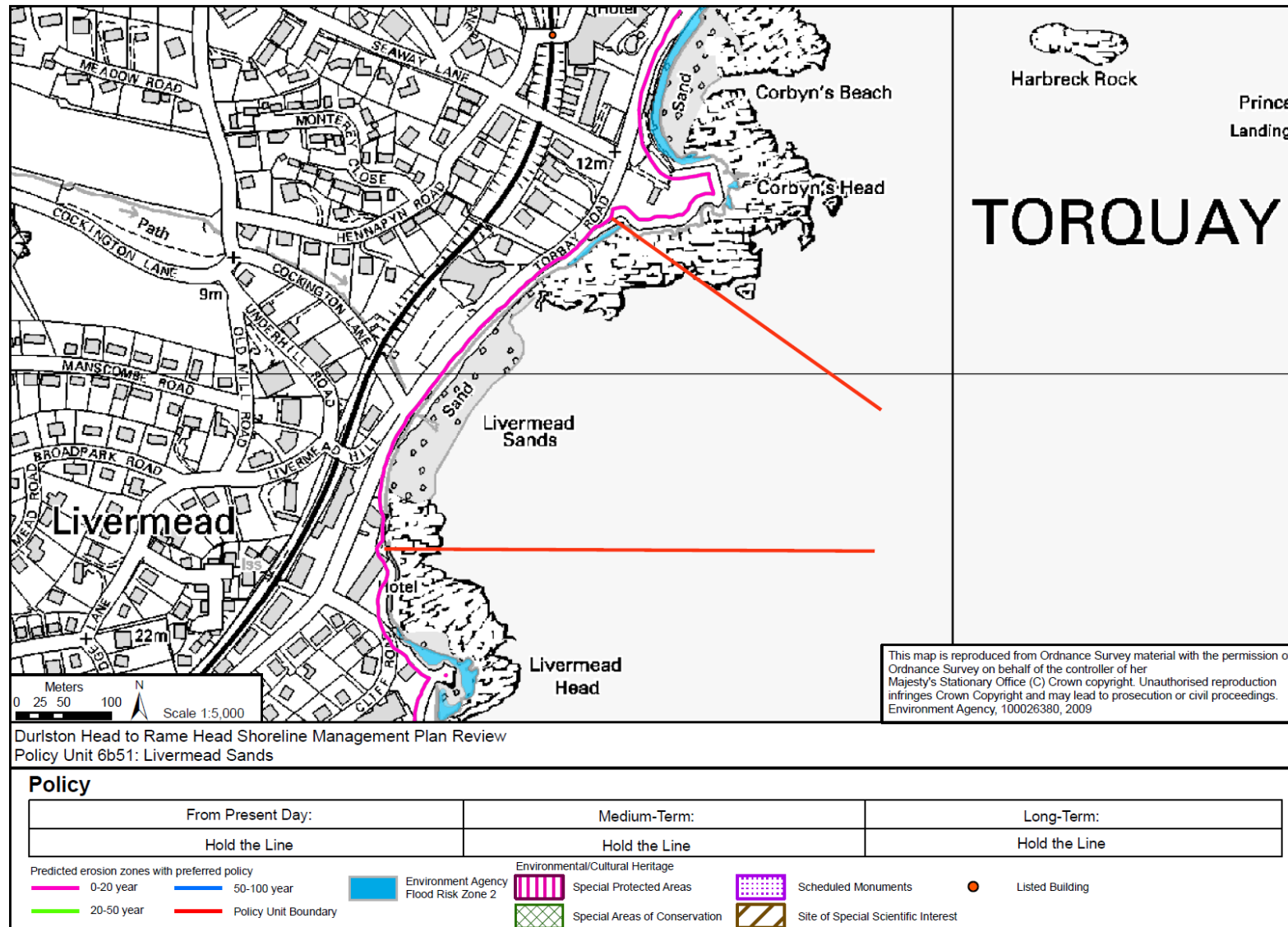
Durlston Head to Rame Head Shoreline Management Plan Review  
Policy Unit 6b50: Corbyn's Head

Policy		
From Present Day:	Medium-Term:	Long-Term:
No Active Intervention	No Active Intervention	No Active Intervention

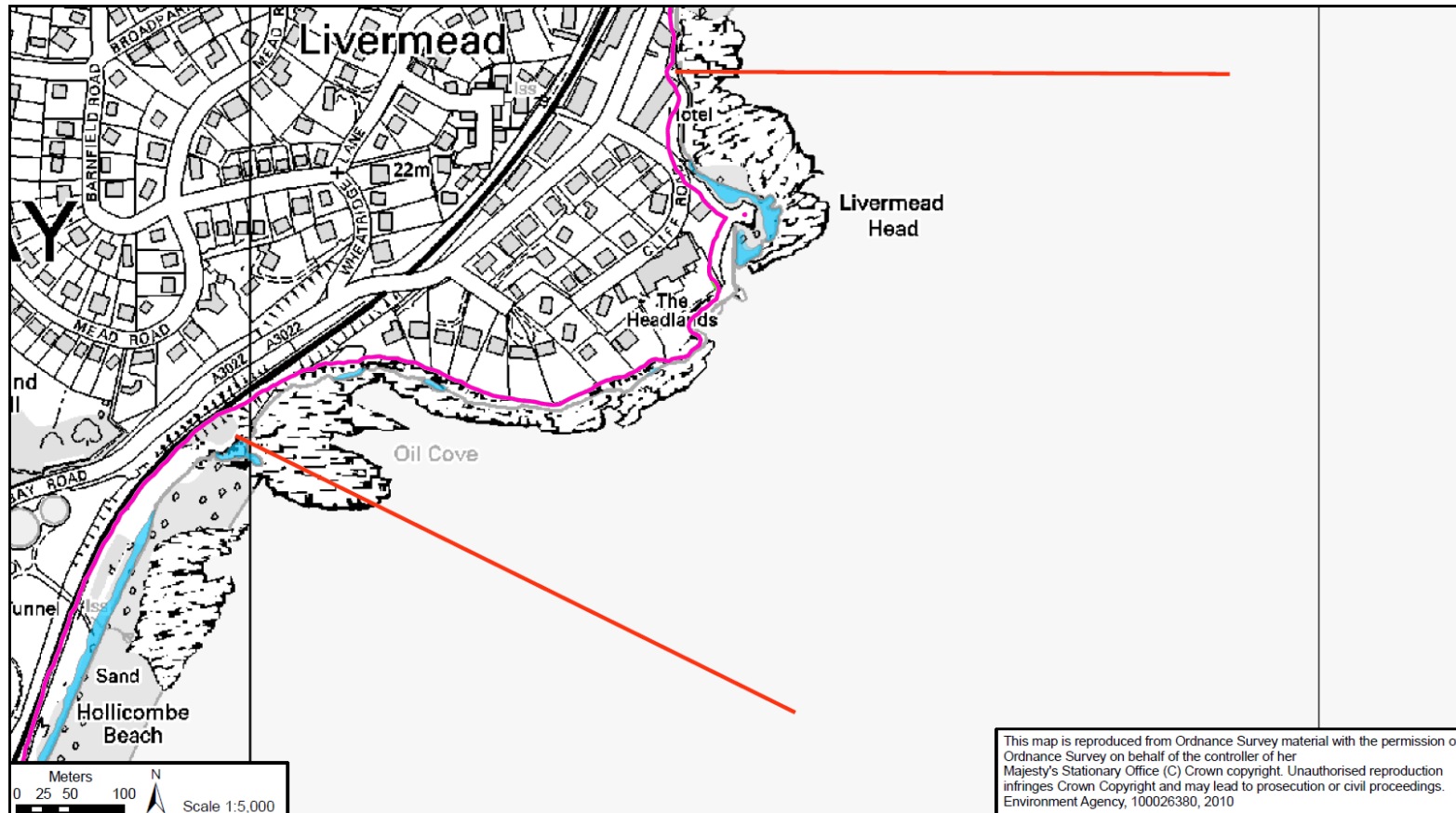
  

0-20 year	50-100 year	Environment Agency Flood Risk Zone 2	Environmental/Cultural Heritage	Special Protected Areas	Scheduled Monuments	Listed Building
20-50 year	Policy Unit Boundary	Special Areas of Conservation	Site of Special Scientific Interest			

The above provides the local details in respect of the SMP-wide policy presented in the preceding sections of this Plan document. These details must be read in the context of the wider-scale issues and policy implications, as reported therein.



The above provides the local details in respect of the SMP-wide policy presented in the preceding sections of this Plan document. These details must be read in the context of the wider-scale issues and policy implications, as reported therein.



This map is reproduced from Ordnance Survey material with the permission of Ordnance Survey on behalf of the controller of her Majesty's Stationary Office (C) Crown copyright. Unauthorised reproduction infringes Crown Copyright and may lead to prosecution or civil proceedings. Environment Agency, 100026380, 2010

Durlston Head to Rame Head Shoreline Management Plan Review  
Policy Unit 6b52: Livermead Head

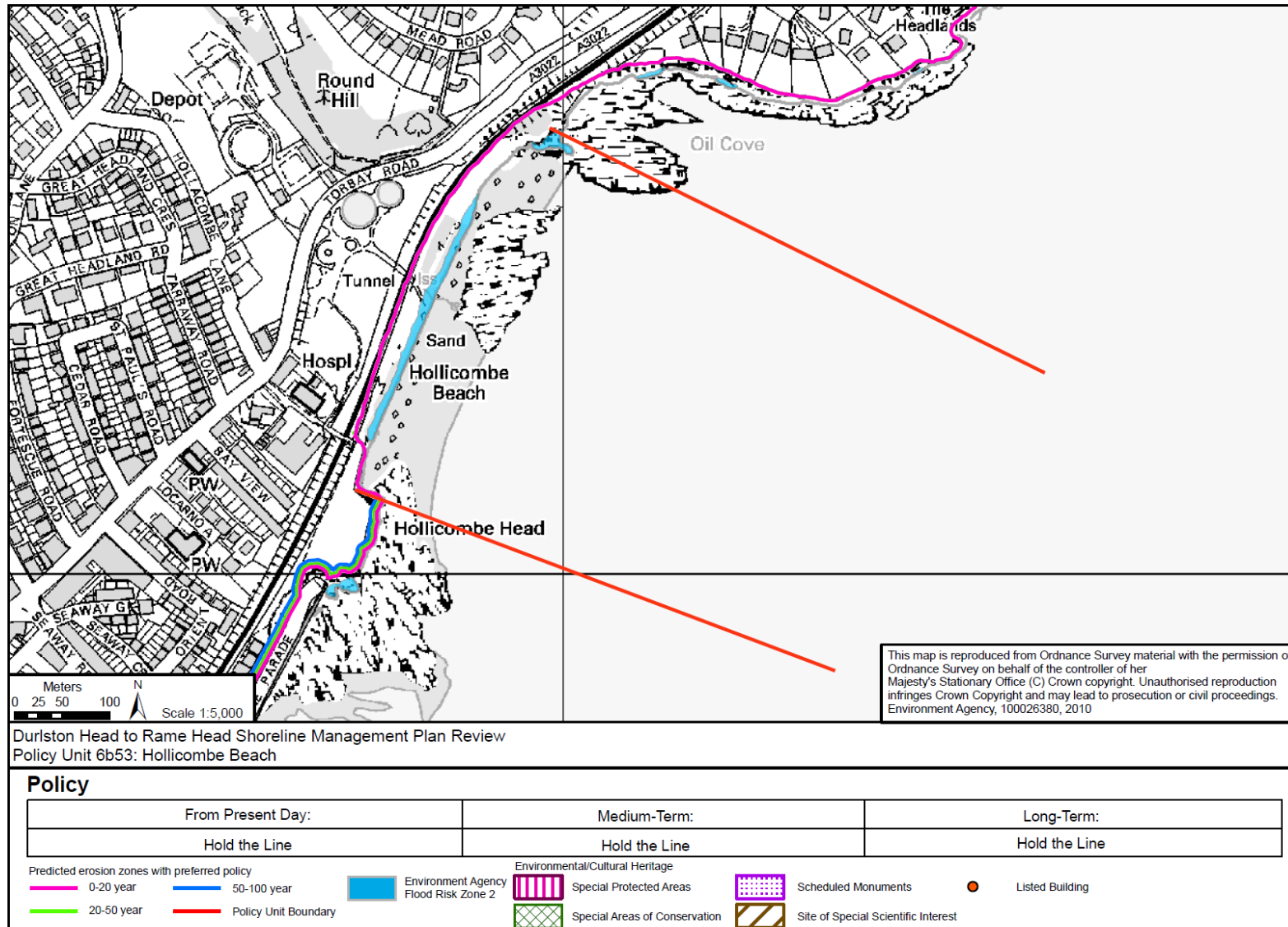
Policy		
From Present Day:	Medium-Term:	Long-Term:
No Active Intervention	No Active Intervention	No Active Intervention

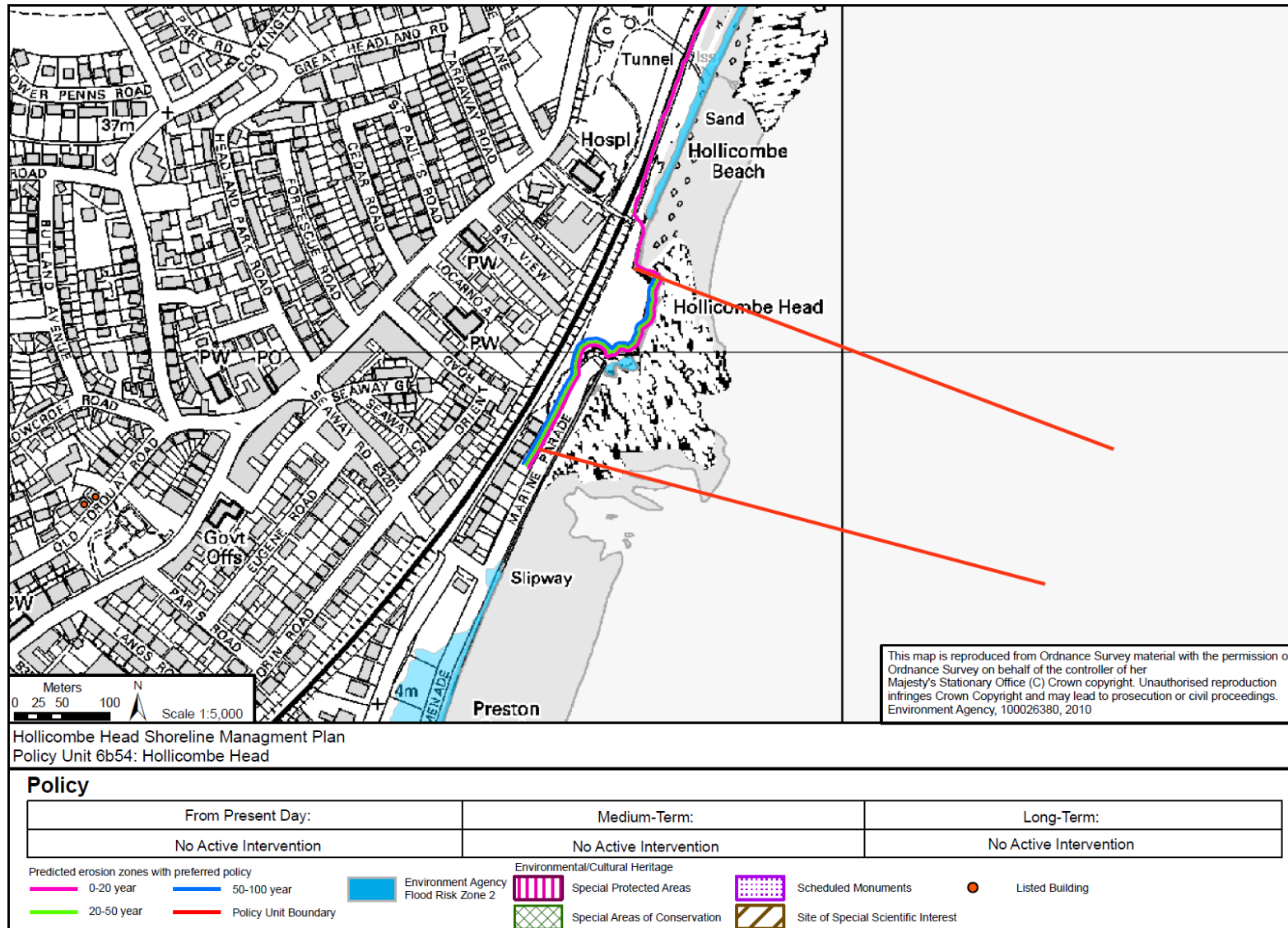
Predicted erosion zones with preferred policy 0-20 year (pink line) 20-50 year (green line)	50-100 year (blue line) Policy Unit Boundary (red line)	Environment Agency Flood Risk Zone 2 (light blue area) Environmental/Cultural Heritage Special Protected Areas (hatched pattern) Special Areas of Conservation (green hatched pattern)	Scheduled Monuments (dotted pattern) Site of Special Scientific Interest (orange hatched pattern)	Listed Building (orange circle)
---	--	---	--	---------------------------------

The above provides the local details in respect of the SMP-wide policy presented in the preceding sections of this Plan document. These details must be read in the context of the wider-scale issues and policy implications, as reported therein.

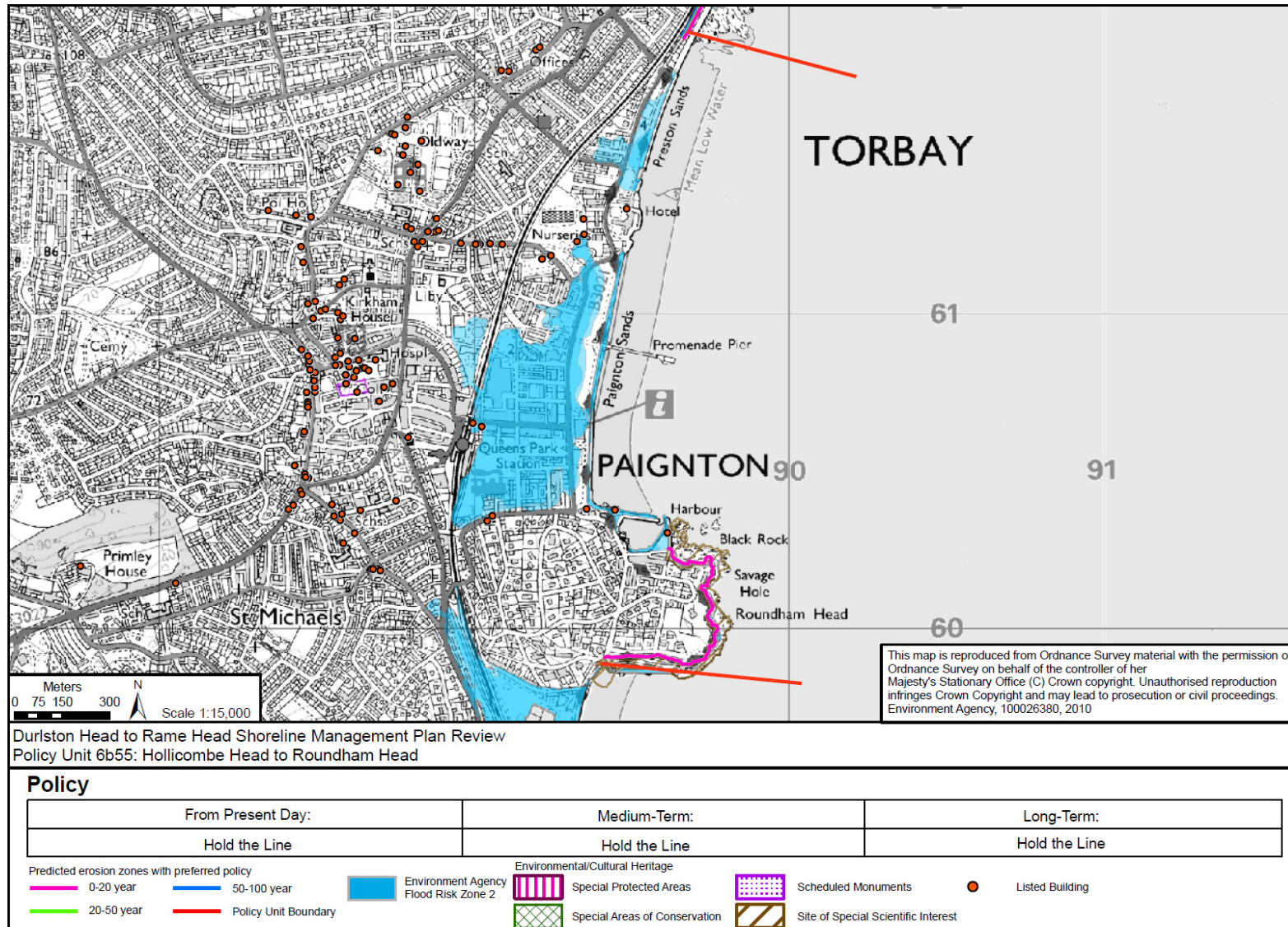




The above provides the local details in respect of the SMP-wide policy presented in the preceding sections of this Plan document. These details must be read in the context of the wider-scale issues and policy implications, as reported therein.



The above provides the local details in respect of the SMP-wide policy presented in the preceding sections of this Plan document. These details must be read in the context of the wider-scale issues and policy implications, as reported therein.



The above provides the local details in respect of the SMP-wide policy presented in the preceding sections of this Plan document. These details must be read in the context of the wider-scale issues and policy implications, as reported therein.