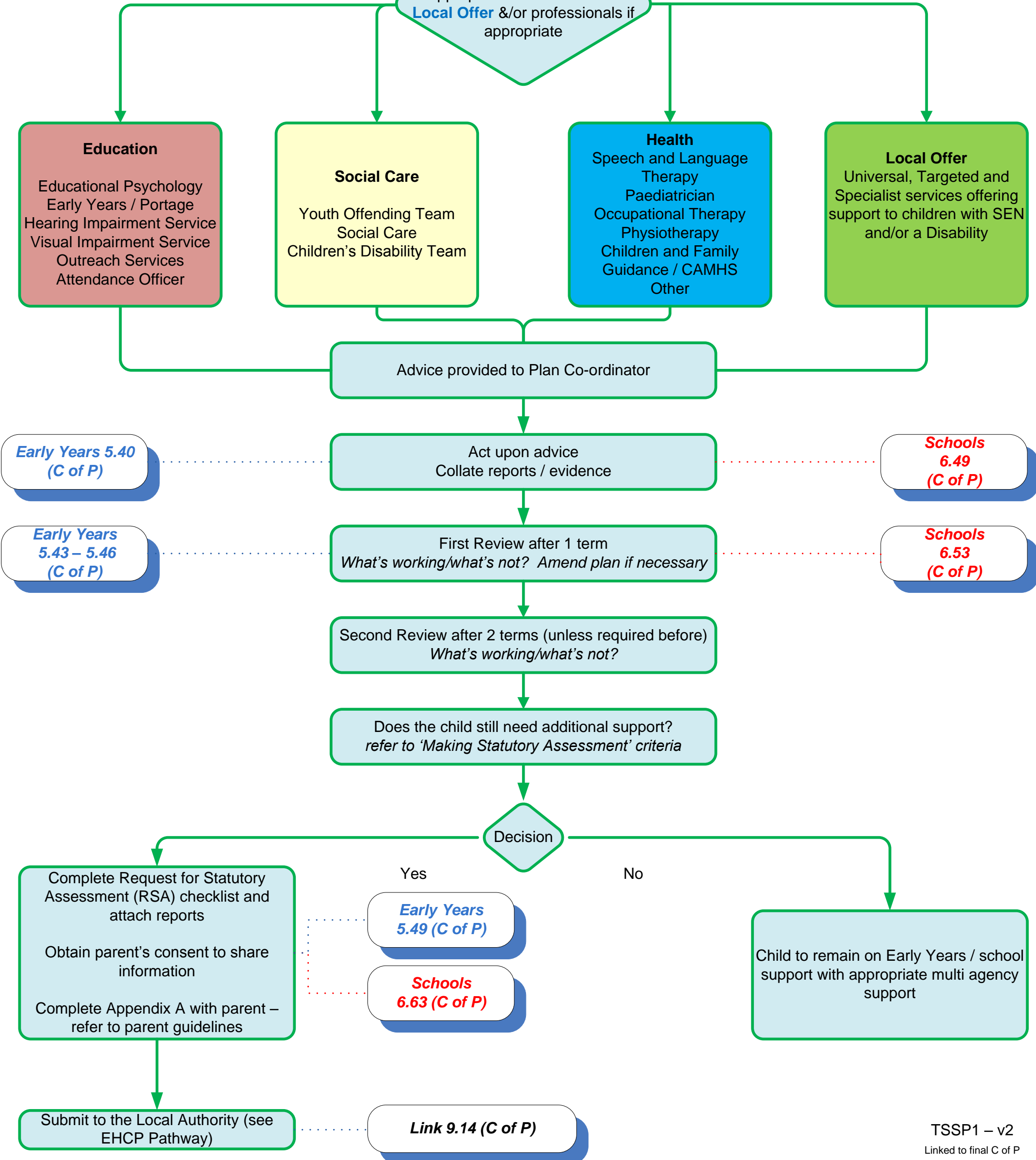


Torbay SEND Support Process – TSSP1
(Pre Request for Statutory Assessment process for Early Years and Schools)

CLICK boxes for hyperlinks to SEN Code of Practice (C of P)

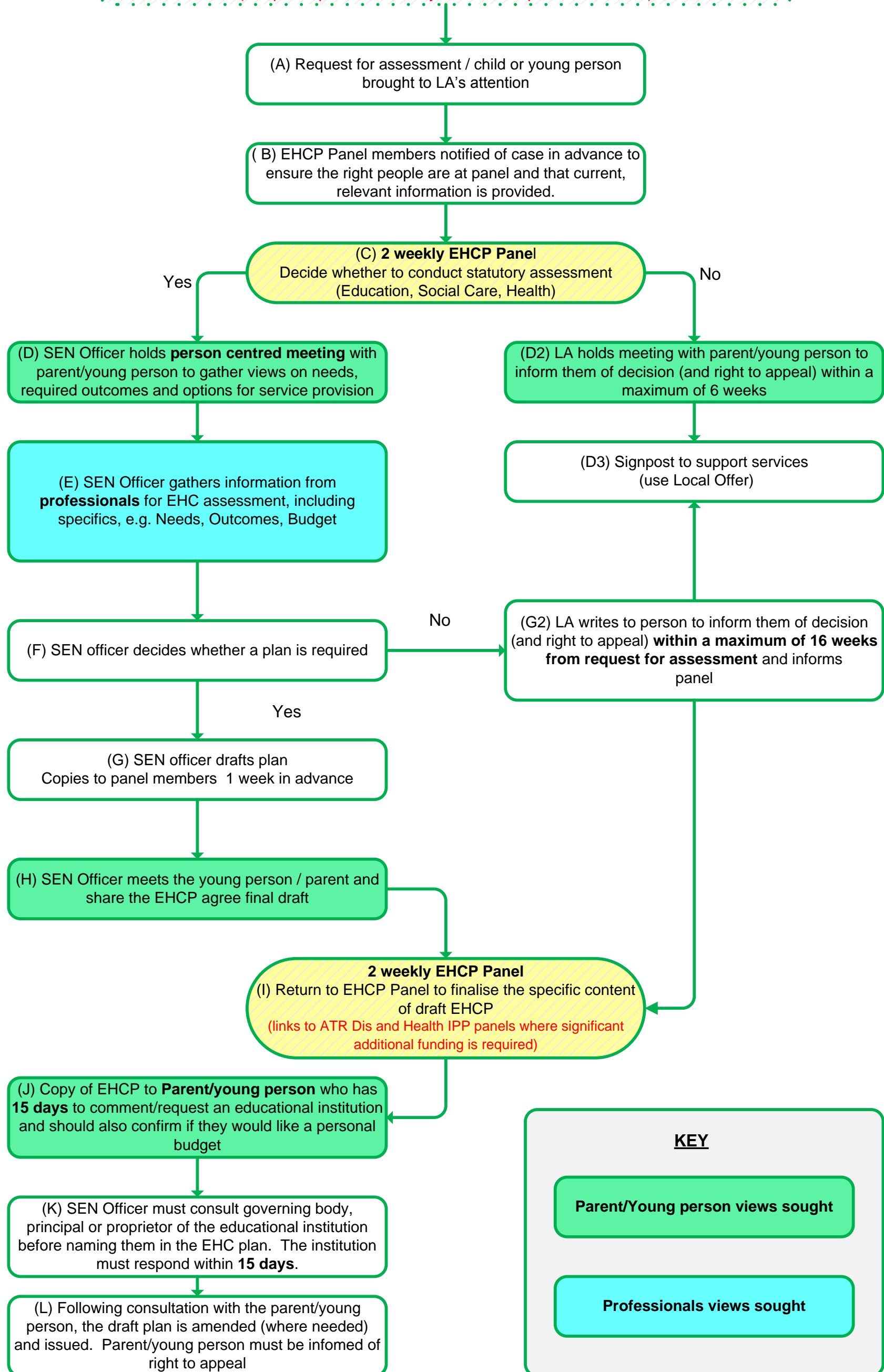
Early Years
5.25 Identification
5.39 Assessment
5.41 Involving Parents (C of P)

Schools
6.14 Identification
6.44 Identification
6.45 Assessment
6.48 Formal notification to parents (C of P)



Torbay SEND Support Process – TSSP2 (Torbay Education, Health and Care Planning statutory process)

Schools to complete checklist of 'evidence' in advance of requesting assessment.
Consent to share information that can be used for an EHCP required from parents
(see pre request for statutory assessment process – TSSP1)



Maximum time for whole process to be completed is 20 weeks

Torbay Education, Health and Care Plan Panel

Proposed ECHP Review Panel (2 x per month)

(Representatives from)

Education - Headteacher(s), SENCO, SEN Team Rep, Educational Psychologist

Adults' Services – Zone Manager or Zone Deputy Manager, Learning Dis Service Manager

Children's Services – Children's Social Care Mgr, Dis Team Senior Prac, Community Services – Service Mgr / Team Manager

Health – Commissioning, Clinical Leads, DMO

Purpose

To consider requests for assessment

To reach agreement on the specifics included in the draft ECHP

Ratify Resource Allocation