

# Education, Health and Care Plans



## What is this leaflet?

This leaflet is about how we find out if you need an Education, Health and Care Plan (EHCP).

This leaflet also explains what happens next.

Your EHCP co-ordinator is \_\_\_\_\_

Your EHCP co-ordinator will help to find out what help you need and will talk to everyone one involved in the process.

Phone number: \_\_\_\_\_

## What is an Education, Health and Care Plan?

Your Education, Health and Care Plan has information about any difficulties you may have learning in school or college.

The plan is used so that people who work with you will know what support your need.

## What is a Statutory Education, Health and Care assessment?

Your assessment is about listening to you, your family and the people who help you.

Your EHCP co-ordinator will ask you what you think you need.

You EHCP co-ordinator will ask the people working with you what you need.

## Why is this happening?

We want to find out what help you need.





## Will I get an EHC plan?

When your EHCP co-ordinator has asked everyone what they think there will be a meeting.

If the people at the meeting decide you need a plan then you will get one.

If you don't need our support then you won't get a plan.

## What will be in a plan?

The plan will show what help you need.

It will show what we will do to help you get what you want at school or college.

## Personal Budgets

You may be able to choose who gives you help and when they help you.

Ask \_\_\_\_\_ for more information.

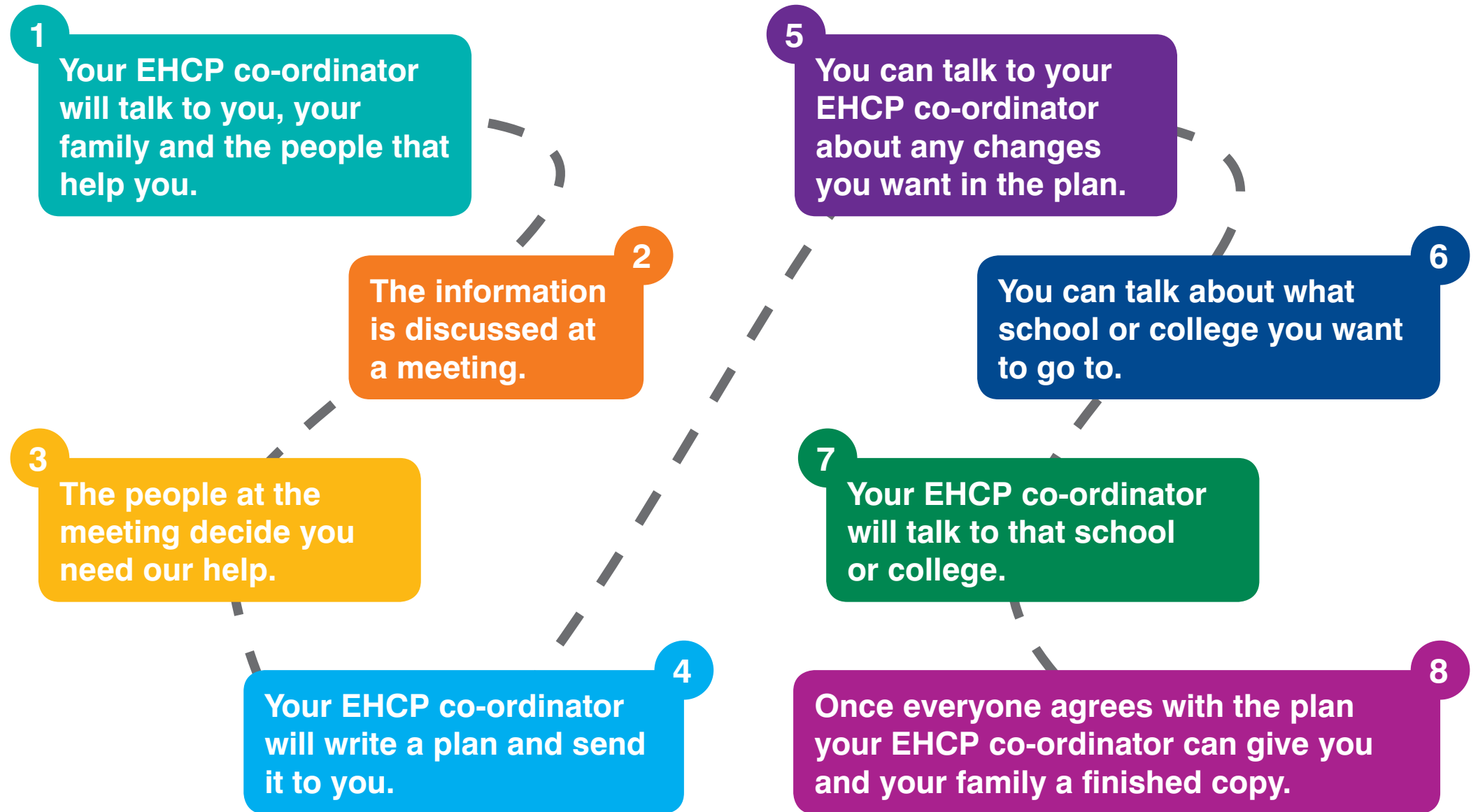
## How long should it take to finish the plan?

The plan will take 20 weeks to finish.

Start \_\_\_\_\_ Finish \_\_\_\_\_



## What happens during an Education, Health and Care Plan assessment?



# Useful Links

**For more information go to:**

01803 208274

[www.torbay.gov.uk/sen](http://www.torbay.gov.uk/sen)

**For more information about what help is offered in Torbay go to:**

[www.torbaydirectory.com/family](http://www.torbaydirectory.com/family)

**Information for parents is at:**

[www.torbay.gov.uk/SEN/sen-info-leaflets](http://www.torbay.gov.uk/SEN/sen-info-leaflets)

This document can be made available in other languages and formats. For more information telephone 01803 208274.