

Torbay Safeguarding Adults Board

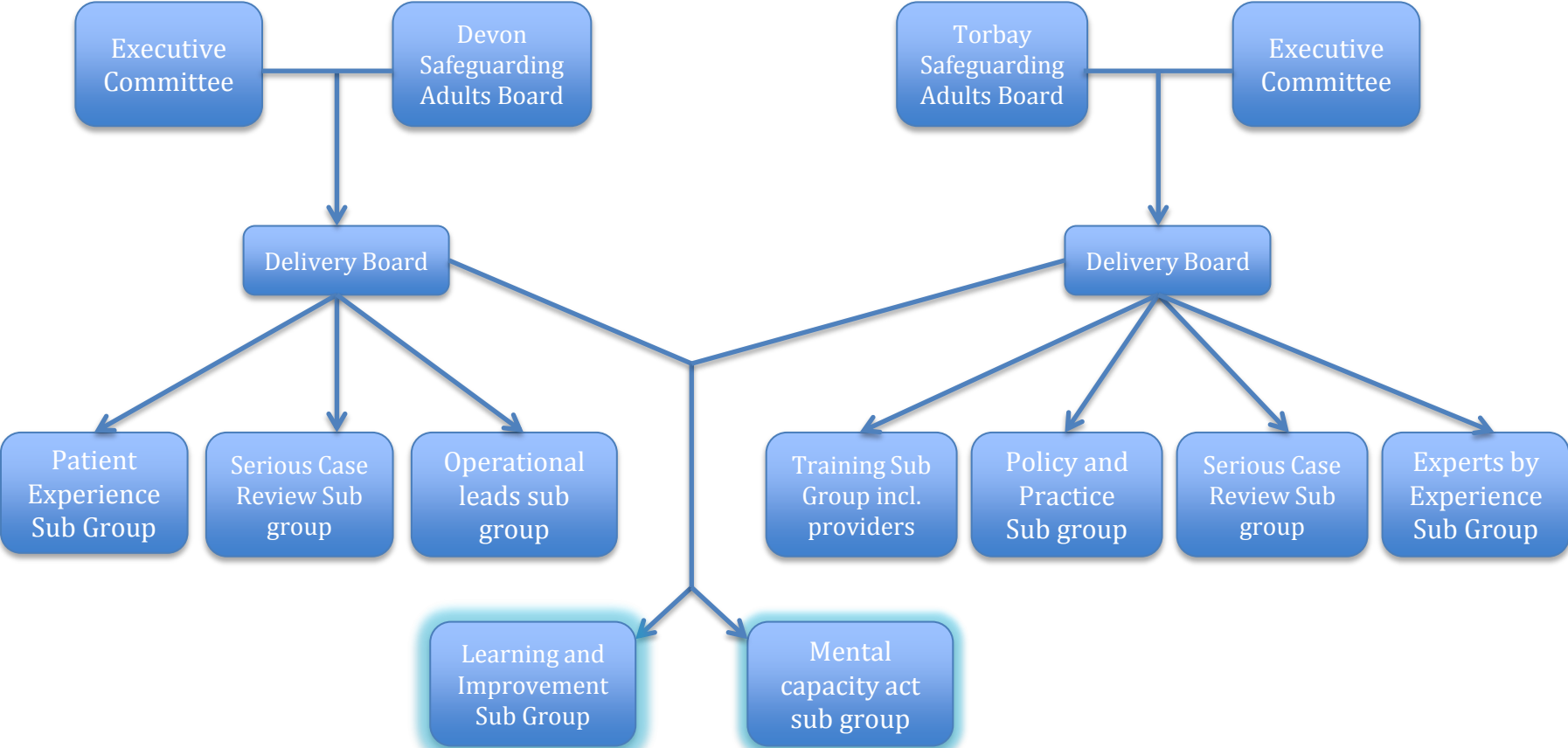


The principles in Government policy for safeguarding vulnerable adults (May 2011) are fully supported.... These are:

- **Empowerment** Presumption of person- led decisions and informed consent
- **Protection** – Support and representation for those in greatest need
- **Prevention** – It is better to take action before harm occurs
- **Proportionality** – Proportionate and least intrusive response appropriate to the risk presented
- **Partnership** – Local solutions through services, working with their communities.
- Communities have a part to play in preventing, detecting and reporting neglect and abuse
- **Accountability** – Accountability and transparency in safeguarding



Structure



SAB: SCR's/ Whole Home/Service

- Inclusive SAB but recently recognised need smaller executive to move faster-More proactive Board
- Working with Devon County and Children's to explore shared business unit to improve resourcing of board
- Torbay demonstrates courage and integrity in the SCR Commissioning process
- SCR Learning- Early support and intervention within Care/Nursing Home environment, Strategic Understanding of Complex cases (WV. etc) –
- New dynamic policy on Whole Home/Service Reviews



Recent focus of Safeguarding Board

- Care homes
- Referrals
- Training and development
- Winterbourne/Francis
- Performance
- Prevention/vulnerability
- User engagement
- Care Bill/Act
- Contact with other Boards



What we would like to take forward in home based settings for care/prevention

- User group involvement
- Quality systems in addition to CQC-prevention and assurance
- Vulnerability forum
- Culture- doing the right thing for Mrs Smith



