



*supporting and improving the
community*

Why are we Here in Hele?

- 38% of 16 -74 residents in Hele have no qualifications
- Only 37% of pupils in Hele obtained 5+ grade A-C GCSE's compared to 64% in Torbay
- 40% of children 0-19 in Hele live in income deprivation
- 34% of older people 65+ in Hele live in income deprivation
- 23% more teenage pregnancies in Hele verses Torbay

Why are we Here in Hele?

- 39% do not have access to a car or van
- 31% live in social rented housing
- 5% of all crime in Torbay came from Hele
- 40% of children 0-19 in Hele live in income deprivation
- 34% of older people 65+ in Hele live in income deprivation
- Life expectancy for males in Hele is 3.4 years lower & 2.4 years for women

What has been done?



Tackling Inequalities and Empowering Communities

Two Key Principles:

- Tackle inequalities in Hele through better joined up working between agencies and the community – adopting a neighbourhood management model
- Invest in community engagement in Hele to build capacity, community development & social inclusion

How are we doing this:

- Hele's Angels One- Stop- Shop aims to improve access to services for Hele residents- it offers signposting, advice & information.
- Hele Community Board/Neighbourhood Manager
- Community Development/ Engagement

Listening to the community

Community's priorities were:

1) Crime/ASB

Reported cases of ASB are down 20% between 2008/9 and 2009/10

Specific tasking from the Community Board to the Tasking group.

2) Better facilities for Children

Barton Down Play Park is going ahead (£101k investment)

Working with Devon Youth in a "Through the eyes of the young people"

3) Better Job Prospects

Working with Shekinah, Outset, Rise, Job centre Plus. Schools e.t.c.

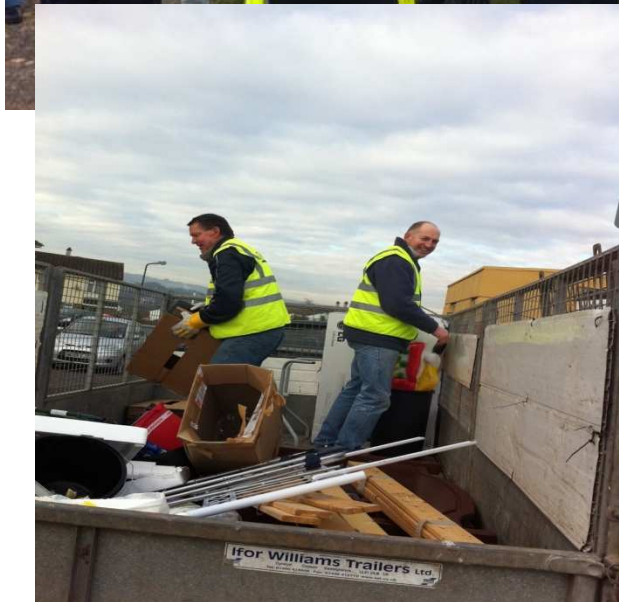
Hele Clean up (Last weekend)

4) Cleaner Streets

Hele Clean up

- Worked with a number of other partners
- We had up to 50 volunteers
- Cleared 40 -50 Tonnes of rubbish
- Litter picking
- Focused on Fly tipping
- We had support from the community

Hele Clean Up



Hele's Angels Shop



- Steady increase in the number of people visiting the shop since it opened.

Sept -16, Oct – 29, Nov – 33, Dec – 48, and January so far 43. Total of 162 individual people, with many making multiple visits.

Case studies - Single mum, Long term unemployed lady, Gentleman with a number of problems.

- We have a large amount of agencies running surgeries in the shop each week
- Over 20 volunteers involved on the board or in the shop, we have 10 of volunteers who are undergoing training with TAN.

What the community say about the shop...

- “This is just what we needed” – Pauline
- “Thank you for the help & Support”, I hope it will continue – Mark
- “Guess what I have got my job! Thanks for the help” -Carly
- “At last someone is listening to us” Please don’t stop - Ken

The Big Challenges Ahead

- Reaching the community
- Empowering and supporting the community
- Building relationships with the community
- Getting the community involved and engaged
- Getting funding into the area to support community groups

All of this will take time and resources

Engaging the community

- Community Board & Public meetings
- Use of press & local media
- Shop Window advertising
- Hele's Angels and Devon Youth are working together on a Youth project
- An Anti child-poverty working group is being formed to address the issue of child poverty in the area
- Hele's Angels Newsletter
- Knocking on 2,000 Doors over the next 3 weeks, to share and listen

Supporting Hele's Angels

- We need continued commitments to maintain current partnership working
- We need to continue and support the volunteers and community groups in Hele who are committed to bringing change.



- Any Questions



THANK YOU